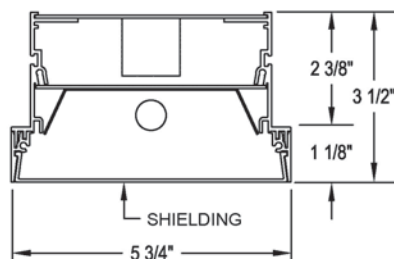




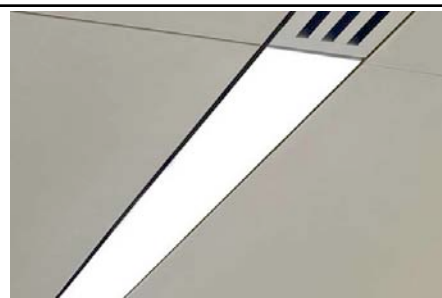
Click or scan QR code to view latest spec sheet

**NEED LED?**  
CLICK HERE

Revision Date: March 08, 2018  
Gammalux Lighting Systems reserves the right to change details of fixture designs and construction at any time.



LED Lamping



Click photo to view product page

Page 1: Overview & Nomenclature  
Pages 2-3: Specifications  
Pages 4-5: Photometric Info / Downloads  
Page 6: Mounting Details

## Product Overview (for complete specifications, see pages 2 & 3)

**Construction:** I.C. rated. Extruded aluminum housing provides superior fit and finish and is mounted in Hunter Douglas Ceilings & Walls exclusively from CertainTeed, Inc. Techstyle ceiling. Fixtures can be installed from below. Continuous runs have hairline joints with no light leak. Runs of fixtures can be built to match field conditions.

**Electrical:** Fixtures can be fitted with integral sensors and control interface devices (consult factory). Multiple dimming options available. Runs of fixtures are tested as a complete system prior to shipping.

**Optical:** Lenses available in standard (ASL), medium (ASLMD) and heavy (ASLHD) diffusion.

**Finish:** High quality paint finish in high gloss or semi-gloss. Custom colors available.

**Packing and Shipping:** Packing, labeling and shipping systems ensure products arrive safely, ready to install.

## Standard Nomenclature

Manufacturer	Cross Section (nom)	Distribution	No. of Lamps	Nominal Lamp Watts	Ballast Option	Run Length	Mounting Method	Paint Colors	Paint Finish
Gammalux	6" x 4"	Recessed	1 2	32 (4'-T8) 28 (4'-T5) 54 (4'-T5HO)	ERS Electronic Rapid Start <10% THD See dimming ballast codes on page 2.	Specify total run length (i.e. 43' 5 1/8", etc). Single-piece housing max is 12' unless coordinated with factory.	REC Recessed Mtd.	W White (Consult Color Chart for other standard colors)	SG Semi-Gloss
<b>GB64RC2TE</b>				<b>154T5HO</b>	<b>120V</b>	<b>ERS</b>	<b>4' - REC/T1SW</b>	<b>ASL</b>	<b>WSG</b>
	Application Techstyle or Echelon			Lamp Type T8 T5 T5HO	Voltage 120, 277, UNIV	Ceiling System (see pg. 5) T1SW 15/16" Flat T Bar Techstyle Ceiling EMSW Echelon Main T EXSW Echelon Cross T	Shielding ASL Acrylic Satin Lens ASLMD Acrylic Satin Lens (Medium Diffuse) * ASLHD Acrylic Satin Lens (Heavy Diffuse) *	Options BPE Battery Pack EM. Kit (120V or 227V only) DL UL Damp Label EMERG Emergency ckt. GLR Fuse w/holder 2CKT Dual Circuiting	<b>XX</b>
	Cross Section Shape Beam								

\* To better hide lamp image, medium or heavy diffuse lenses are recommended.

---

## Specifications (continued on next page)

---

### Electrical

**Static Ballast\*:** Osram or equal Electronic Rapid Start with less than 10% Total Harmonic Distortion is default (**ERS**).

**0-10V Dimming\*:** 0-10v dimming by Advance Mark 7 is default (**ZTV**).

**Line Voltage Dimming\*:** Two-wire line voltage dimming by Advance Mark 10 is default (**TWR**).

**DALI Dimming\*:** Dimming by generic DALI ballast (**DALI**).

**Lutron Dimming:** Dimming by Lutron EcoSystem, wired for EcoSystem control (**ECDE**). Dimming by Lutron EcoSystem, wired for 3-Wire control (**ECD3**). Dimming by Lutron EcoSystem H Series (**ECH**). Dimming by Lutron Hi-Lume 3D, wired for EcoSystem control (**H3DE**). Dimming by Lutron Hi-Lume 3D, wired for 3-Wire control (**H3D3**).

**Step Dimming:** Step Dimming availability is contingent upon multiple factors. Consult factory (**SDIM**).

On-board sensors, control interface devices may be specified (consult factory). Max ballast cross section size 1.0" x 1.2". Fixtures bear UL & cUL Dry Location label. Damp Location label available (**DL**).

\*Subject to availability. May be substituted by Gammalux. Components and specifications may be changed without notice.

---

### Construction

**Housing:** I.C. rated. Extruded aluminum body 5.75" wide x 3.50" high, 6063T5, 0.070" min thickness. In continuous runs, each housing is 12' max unless longer housings are pre-coordinated with the factory to reduce joints and save installation labor. All fixtures are built per approved factory drawings and tested as a complete system at the factory. Continuous runs and patterns are ordered, built and shipped with a single item #. Fixtures ordered as individuals are not designed to be joined together in the field.

**Joiner System:** Automatic alignment, no loose parts, one tool to tighten two factory installed bolts for hairline seam. No light leaks.

**Lamping:** Lamps are set end-to-end. Factory-engineered drawings indicate the location and wattage of each lamp in continuous runs.

**Mounting:** Recessed into Hunter Douglas Ceilings & Walls exclusively from CertainTeed, Inc. Techstyle ceiling. Grid mounted fixtures can be installed from below.

---

## Specifications (continued)

---

### Optical

**Acrylic Satin Lens:** Snap-in. Shall be 100% DR acrylic (**ASL**).

**Acrylic Satin Lens, Medium Diffuse:** Snap-in. Shall be 100% DR acrylic (**ASLMD**). Multiply efficiency by .93.

**Acrylic Satin Lens, Heavy Diffuse:** Snap-in. Shall be 100% DR acrylic (**ASLHD**). Multiply efficiency by .68.

See lens images on page 4.

---

### Finish

Housing is electrostatically sprayed with high solids aliphatic two component polyurethane to an average thickness of 2 mils. over acid etching primer or commercial clear anodizing. Specify **H** for high gloss or **SG** for semi-gloss. Se

---

### Packing and Shipping

Fixtures built for continuous rows are given a specific location identifier, clearly identified on factory layout drawings provided to installing contractor. Location identifier is printed on the fixture's ID Label, protective wrapping and on each end of fixture carton. Shipping pallets are built with 2" clearance, extending beyond the length and width of cartons, providing shipping protection.

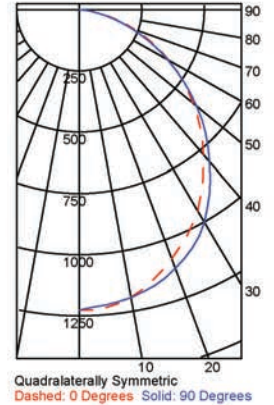
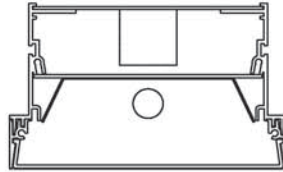
Approx. weight of 4' module is 18 lbs. including carton. Weight of pallet and supplemental packing materials not factored in.

## Photometric Info / Downloads

### Fixture with T5 or T5HO lamping

(One lamp using Standard Diffuse lens. For Medium and Heavy diffuse lenses, use multiplier on page 2.)

IESNA: LM-63-2002  
ISSUEDATE: 08/30/13  
TEST: GB64RC154T5HOASL.ies  
TESTLAB: PHOTOPIA 3.2.6  
MANUFAC: GAMMALUX LIGHTING SYSTEMS  
LUMCAT: GB64RC-154T5-ASL  
LAMPS: 1 54-WATT T-5 FP54/835 FLUOR.



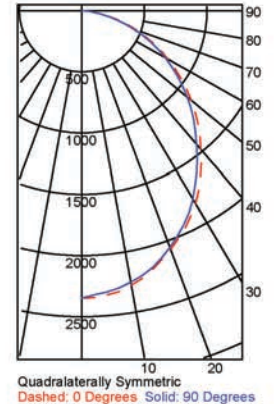
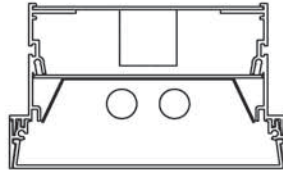
EFFICIENCY (Total): 61.8%  
DISTRIBUTION % UP: 0%  
DISTRIBUTION % DOWN: 100%  
CIE CLASSIFICATION: DIRECT  
LUMENS/LAMP: 5000  
NO. OF LAMPS: 1  
LUMINOUS OPENING: RECTANGULAR  
Width: 0.40 (Feet)  
Length: 4.01  
Height: 0.00  
INPUT WATTS: 61



### Fixtures with T5 or T5HO lamping

(Two lamp using Standard Diffuse lens. For Medium and Heavy diffuse lenses, use multiplier on page 2.)

IESNA: LM-63-2002  
ISSUEDATE: 08/30/13  
TEST: GB64RC22T5HOASL.ies  
TESTLAB: PHOTOPIA 3.2.6  
MANUFAC: GAMMALUX LIGHTING SYSTEMS  
LUMCAT: GB64RC-22T5HO-ASL  
LAMPS: 2 54-WATT T-5 FP54/835 FLUOR.



EFFICIENCY (Total): 56.7%  
DISTRIBUTION % UP: 0%  
DISTRIBUTION % DOWN: 100%  
CIE CLASSIFICATION: DIRECT  
LUMENS/LAMP: 5000  
NO. OF LAMPS: 2  
LUMINOUS OPENING: RECTANGULAR  
Width: 0.40 (Feet)  
Length: 4.01  
Height: 0.00  
INPUT WATTS: 118

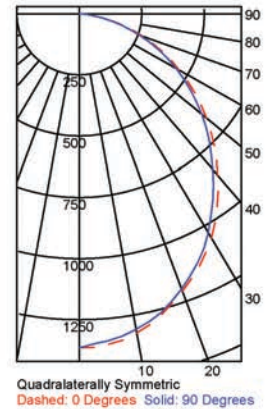
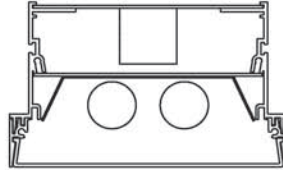


## Photometric Info / Downloads

### Fixture with T8 lamping

(Two lamp using Standard Diffuse lens. For Medium and Heavy diffuse lenses, use multiplier on page 2.)

IESNA: LM-63-2002  
ISSUEDATE: 08/30/13  
TEST: GB64RC22T8ASL.ies  
TESTLAB: PHOTOPIA 3.2.6  
MANUFAC: GAMMALUX LIGHTING SYSTEMS  
LUMCAT: GB64RC2-2T8-ASL  
LAMPS: 2 32-WATT T-8 FLUOR.



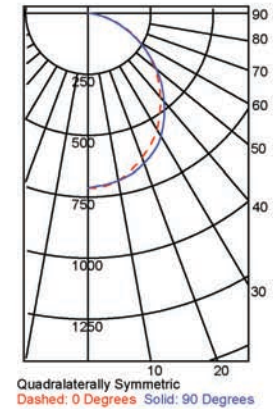
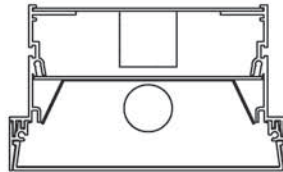
EFFICIENCY (Total): 55.9%  
DISTRIBUTION % UP: 0%  
DISTRIBUTION % DOWN: 100%  
CIE CLASSIFICATION: DIRECT  
LUMENS/LAMP: 2950  
NO. OF LAMPS: 2  
LUMINOUS OPENING: RECTANGULAR  
Width: 0.40(Feet)  
Length: 4.01  
Height: 0.00  
INPUT WATTS: 53.7



### Fixture with T8 lamping

(One lamp using Standard Diffuse lens. For Medium and Heavy diffuse lenses, use multiplier on page 2.)

IESNA: LM-63-2002  
ISSUEDATE: 08/30/13  
TEST: GB64RC21T8ASL.ies  
TESTLAB: PHOTOPIA 3.2.6  
MANUFAC: GAMMALUX LIGHTING SYSTEMS  
LUMCAT: GB64RC2-1T8-ASL  
LAMPS: 1 32-WATT T-8 FLUOR.



EFFICIENCY (Total): 60.9%  
DISTRIBUTION % UP: 0%  
DISTRIBUTION % DOWN: 100%  
CIE CLASSIFICATION: DIRECT  
LUMENS/LAMP: 2950  
NO. OF LAMPS: 1  
LUMINOUS OPENING: RECTANGULAR  
Width: 0.40(Feet)  
Length: 4.01  
Height: 0.00  
INPUT WATTS: 29.4

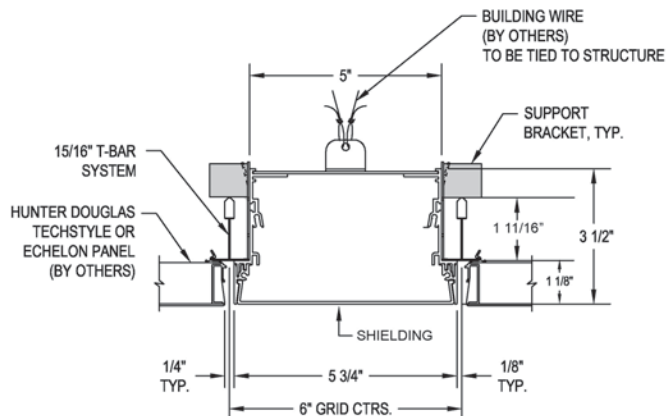




## Mounting Details

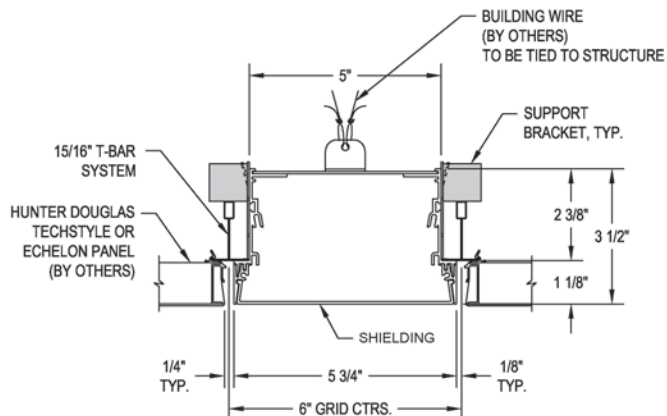
**Factory Drawings:** Fully dimensioned factory drawings will be provided upon receipt of purchase order.

**15/16" T Bar - 1 11/16:**

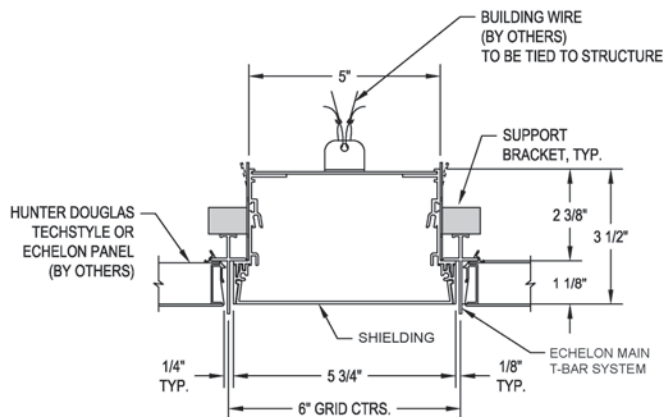
Specify **T1SW** code in catalog #

**15/16" T Bar - 1 1/2:**

Specify **T1SW** code in catalog #

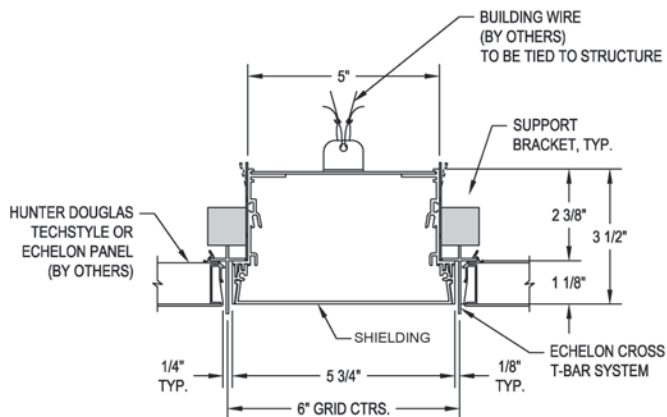


**Echelon Main T Bar:**

Specify **EMSW** code in catalog #

### Echelon Cross T Bar:

Specify **EXSW** code in catalog #



**Mounting bracket is field adjustable to accommodate all four conditions.**

**Gammalux Lighting Systems reserves the right to change the details of fixture design and construction at any time.**