

NUCRAFT

Power



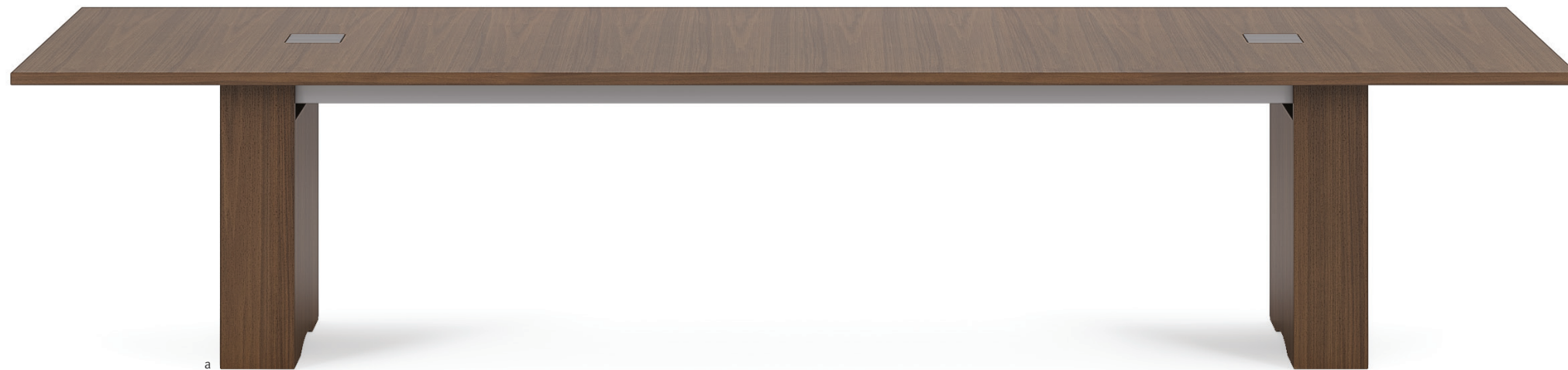
FREESTANDING POWER Simple, easy to use and portable. Freestanding units allow for collaboration and easy connectivity anywhere you want to work. Above: **a. Charging Stand battery powered version** shown in White and Fog | **b. 72" x 18" Emme bench** shown in Thicket Paldao and Architex Cancan Snow. Right page: **c. Tech Zone with bluetooth option** shown in Black | **d. Charging Cube** shown in Black | **e. Charging Stand corded version** shown in Black.





TABLE TOP POWER Options include Power Matrix, Charging Plane, Tech Node, Power Spec, USB Spec and Power Dot. Above, all shown in Walnut Linea and Polished Chrome, except where noted: **a. Square USB Spec** shown in White | **b. Square Power Spec** shown in Black | **c. Round USB Spec** shown in White | **d. Round Power Spec** shown in Black | **e. Power Dot** shown in White and Satin nickel | **f. Tech Node with bluetooth** shown in Black Anodized aluminum. Right page: 54" x 54" Approach table with Charging Plane shown in Walnut Linea with Black and Polished Chrome.



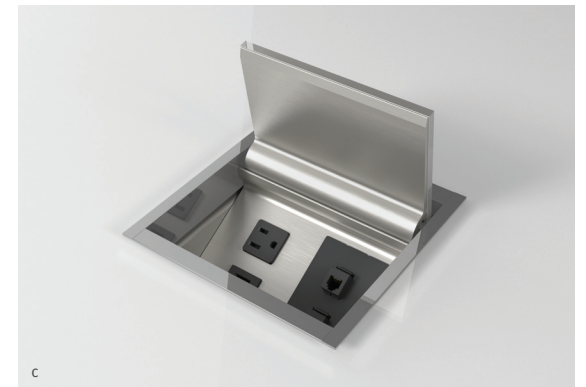


a



b

POWER MATRIX Available in four sizes: small, medium, large and x-large. Access doors are available in veneer, metal or glass. Above, all shown on Marron Walnut with Foil powder coat doors: a. 144" Flow rectangle table, expandable rectangle base with two Power Matrix Small | b. 144" Flow rectangle table, expandable rectangle base, with two Power Matrix Large. Right page: c. Power Matrix Small shown in White glass and Polished Chrome | d. Power Matrix Medium shown in Bianco Carrara stone and Polished Chrome | e. Power Matrix Large shown in Marron Walnut and Foil powder coat | f. Power Matrix X-Large shown in Marron Walnut | g. Power Matrix Small with retractor shown in Marron Walnut.



c



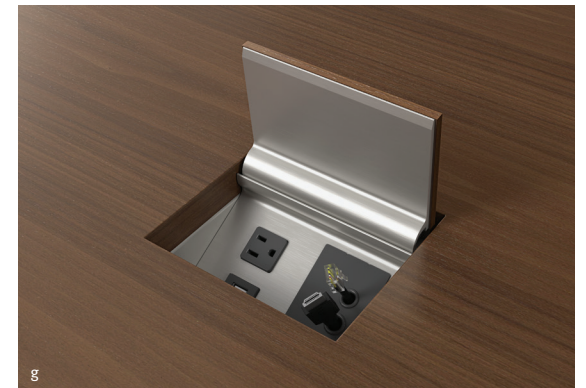
d



e



f



g



UNDERSURFACE POWER Options include Perimeter Power, Power Rail and Charging Trac. Above, all shown on Bramble Rift Cut Oak: **a. Power Rail with Flow edge** shown in Foil powder coat | **b. Power Rail data version with Flow edge** shown in Foil powder coat and Black faceplate. Right page: **Charging Trac with Flow edge** shown in Bramble Rift Cut Oak and Black powder coat.





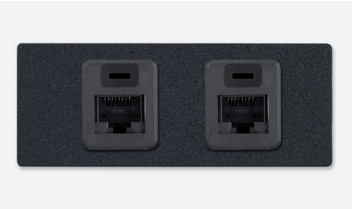
ARCHITECTURAL ADAPTER PLATES (AAP)



FLDF-1: Blank faceplate, single height



FLDF-12: Blank faceplate, double height



FLDF-13: Two RJ-45 female to female barrels, double height



FLDF-3: One VGA 15 Pin HD female to female gender changer



FLDF-2: One VGA 15 Pin HD female to female gender changer, One 3.5 MM stereo mini-jack to solder tabs



FLDF-11: Two USB-A female to two USB-A female on 10" pigtails



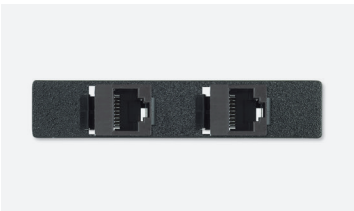
FLDF-15: One HDMI female to female barrel



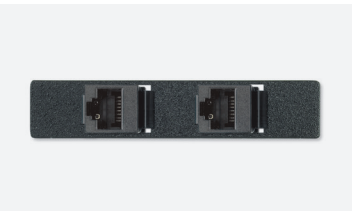
FLDF-5: One RJ-45 female to female barrel—Data



FLDF-4: One RJ-11 female to punch down—Phone



FLDF-6: Two RJ-45 female to female barrels, single height



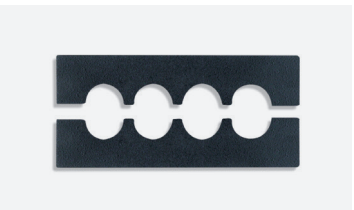
FLDF-7: Two RJ-45 female to punch down for CAT 6—Amp



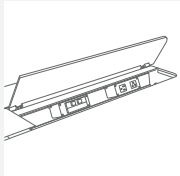
FLDF-8: Two RJ-45 female to punch down for CAT 6—Leviton



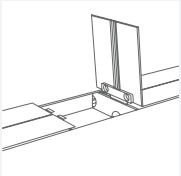
FLDF-10: Two RJ-45 female to punch down for CAT 6—Panduit



FLDF-14: Cable pass through set—one top, one bottom, double height



Power and data blocks



Storage module

POWER ISLAND Available only on Flow XT table. Power Island access doors are available in metal or glass. Above: 144" Flow XT rectangle table with Power Island shown in Natural Paldao with Clove gloss back painted glass doors.

DATAKOM OPTIONS Available in 14 standard solutions. Can be used with Power Matrix, Power Rails, Charging Trac and the Flow XT Power Island. These mountable metal plates offer AV pass-through connectors to allow for audio, video, phone, data and power within reach to simplify how you work and meet.

POWER AT-A-GLANCE																
	CONFERENCE TABLES														TRAINING TABLES	
	Agility	Approach	Ativa	Baja	Crossbeam	Flow	Kai	Merino Meeting	Preston	Saber	Tavola	Tesano	Tova	Two4Six Meeting*	Fleet	MYNE™
TABLE TOP																
Charging Cap																X
Charging Plane		X														
Grommet	X			X		X	X	X		X	X			X	X	
Power Dot								X								
Power Island						X										
Power Matrix Compact	X					X				X					X	
Power Matrix Small		X	X	X	X	X	X			X	X			X		
Power Matrix Medium				X		X				X				X		
Power Matrix Large						X				X						
Power Matrix X-Large						X				X						
Power Cap																X
Power Port																X
Power Spec		X		X		X						X		X		X
Retractors			X	X		X	X				X			X		
Preston USB									X							
Tech Node	X	X		X		X				X	X	X		X	X	
USB Spec		X		X		X						X		X		X
UNDER SURFACE																
Charging Trac				X		X			X			X		X		
Perimeter Power						X				X						
Power Rail				X		X	X		X			X		X		
Power Drawer					X											
Power Tabs													X			
FREESTANDING																
Charging Cube	X	X	X	X	X	X	X	X	X	X	X	X	X	X	X	X
Charging Stand	X	X	X	X	X	X	X	X	X	X	X	X	X	X	X	X
Tech Zone	X	X	X	X	X	X	X	X	X	X	X	X	X	X	X	X

*Two4Six height adjustable tables: Power Rails only power option available.

POWER OPTIONS From table top, to under surface and freestanding power options, Nucraft offers a broad array of scalable features and options that work with multiple product lines. Products are available in a variety of shapes, sizes, finishes and connectivity options to meet a range of application needs.

