

An aerial photograph of a freight train with several long, colorful railcars (red, blue, green, and brown) stretching across the frame. The train is on tracks with gravel bedding. To the left, there are more tracks and some vegetation. To the right, there's a gravel area and some industrial structures.

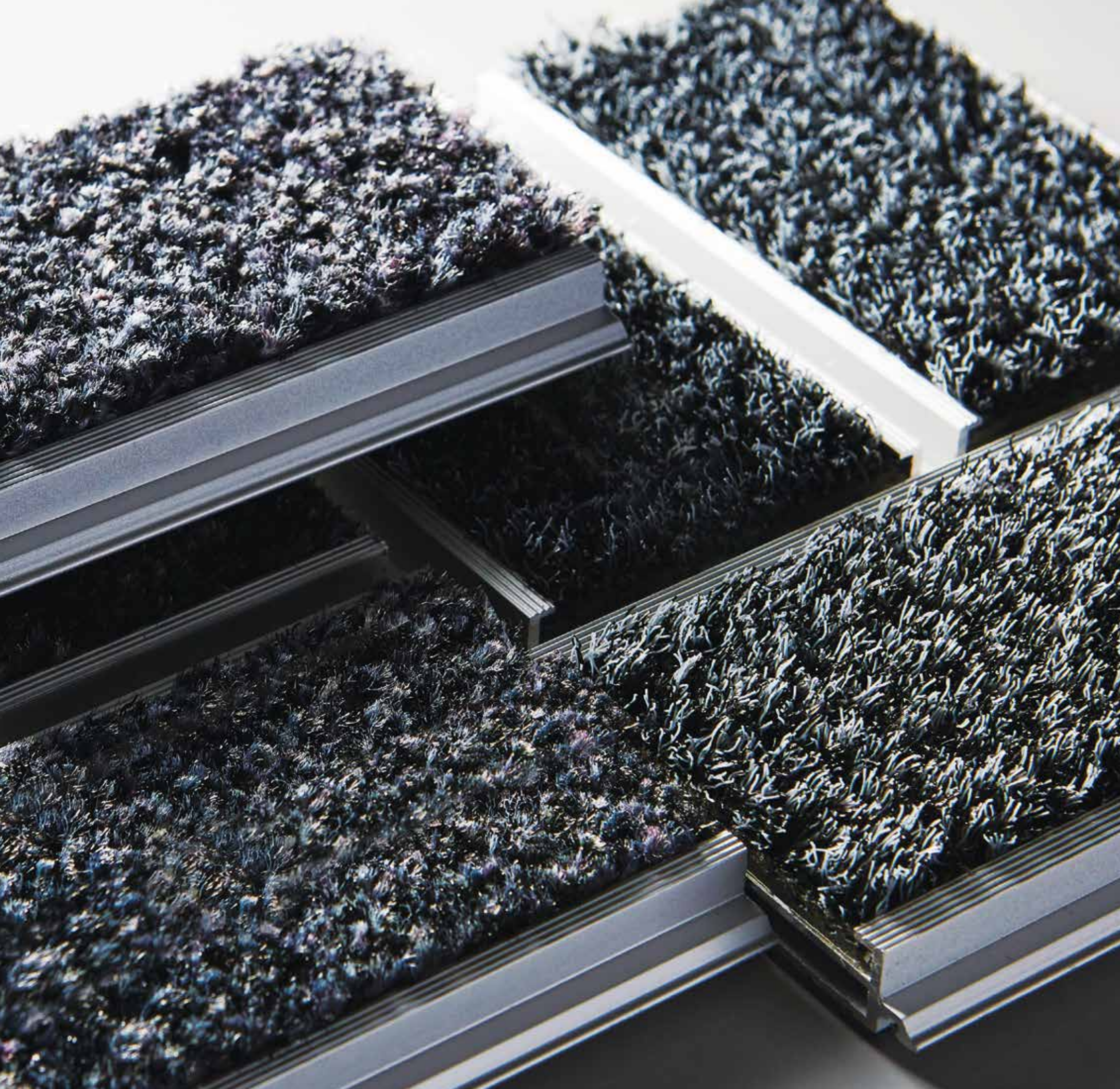
**OBEX™**

Milliken  
**Entrance Flooring**

**BAR**

*Milliken*





## OBEX™ Bar

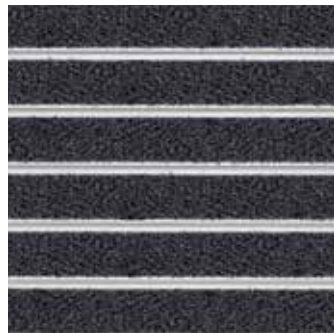
OBEX™ Bars are designed with a unique aluminum click-in system for simple installation directly on premises. Bars can be cut to fit any application—whether surface mounted on the floor or installed in recessed mat wells. Bars feature our Cut textile or Monofilament inserts with added backing for built-in sound insulation.





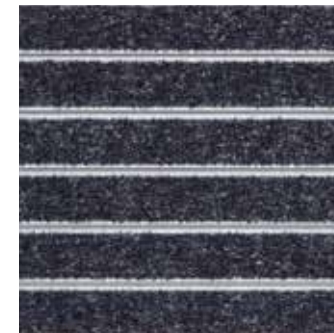
▶ Z2: Bar / Mono  
▶ Z3: Bar / Cut / Dark Grey

### OBEX™ Mono



Grey

### OBEX™ Cut



Dark Grey



Grey

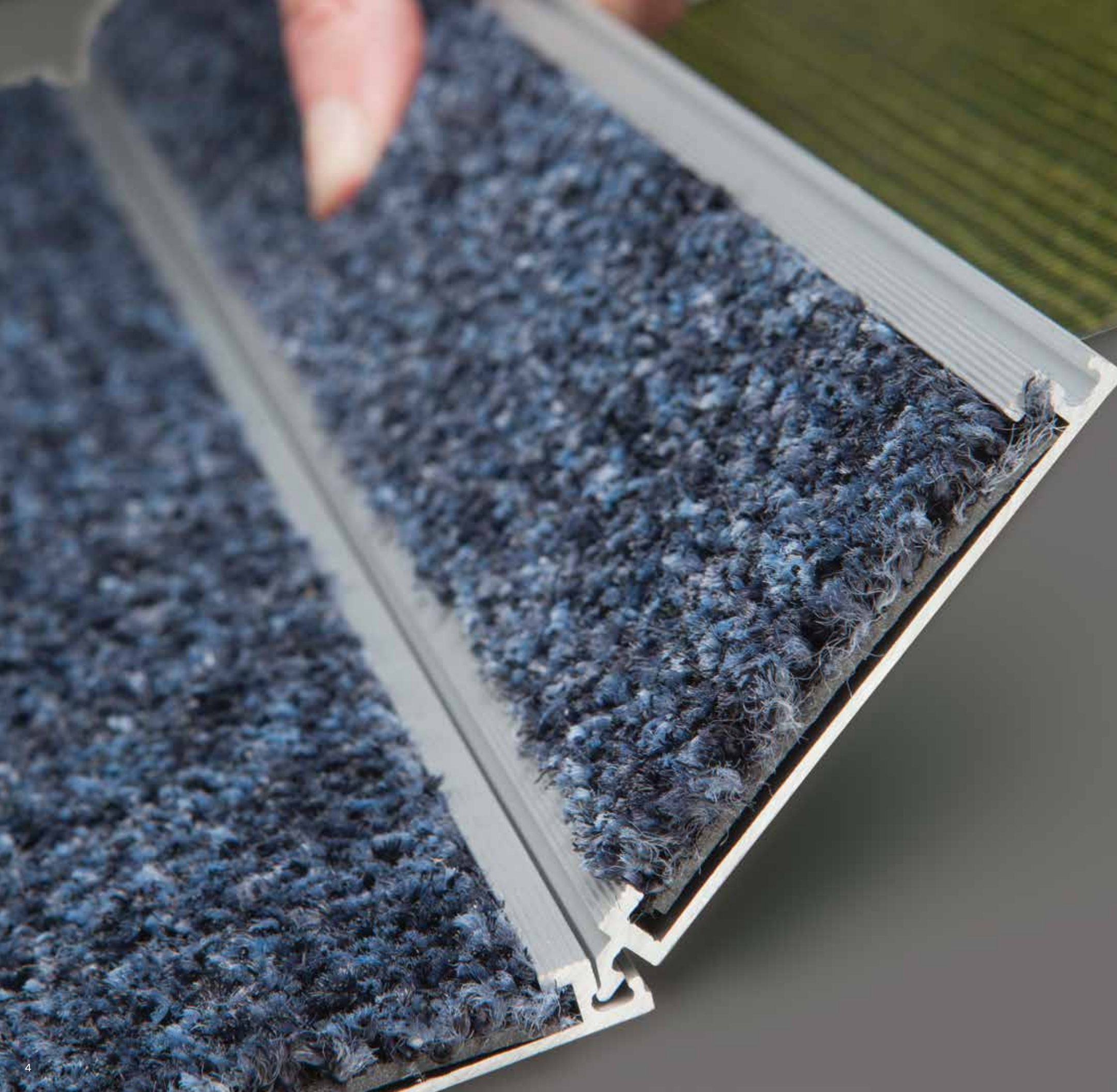


Dark Blue



Brown





# Performance Made Simple

OBEX™ Bars feature a patented click-in profile system, making on-site installation simple. High quality aluminum material combined with 69 mm OBEX Cut or OBEX Mono inserts deliver superior scraping action, while the foam backing maximizes noise reduction from foot and rolled traffic.

## INDIVIDUAL PROFILE





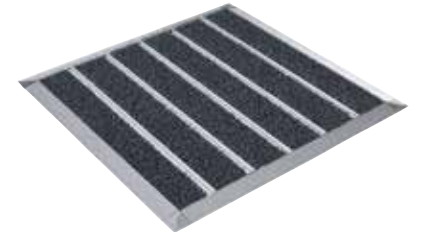


# Installation and Cleaning Made Easy

OBEX™ Bars are easy to install in a recessed mat well or surface mounted. Simple tools such as an electric handsaw can be used if adjustments on-site are required.

## **SURFACE MOUNTED**

For surface mounted installations, OBEX Bars feature a complete edging system and corners.



## **RECESSED**

For installation in recessed areas, OBEX Bars combine with start and finish profiles in "J" shape for a perfect finished look.



The closed structure of the OBEX Bar profile system allows for cleaning on-site without having to move or lift the product. Daily vacuuming is recommended; hot water extraction should be used if soiling remains visible after vacuuming.



# Covering the Zones

## Protection from the Outside In

To determine the most effective OBEX™ solution, our team evaluates your building's entry based on three distinct Zones. This process starts at the outside of the building, and addresses the entire pathway through any airlocks, vestibules, and lobby or reception areas. Because every facility is unique, breaking down these Zones helps define where entrance flooring should be installed, as well as what combinations of Forms and Materials will deliver the best protection and performance.

### ZONE 1 | OUTDOORS

**Location:** Outdoor covered area prior to building's entrance

**Recommendation:** Product with heavy scraping action

**Goal:** Trap grit, heavy dirt particles, and moisture, including snow, salt, and sand

### ZONE 2 | VESTIBULE / AIRLOCK

**Location:** Enclosed entrance of building

**Recommendation:** Dual-action product that combines scraping and absorption

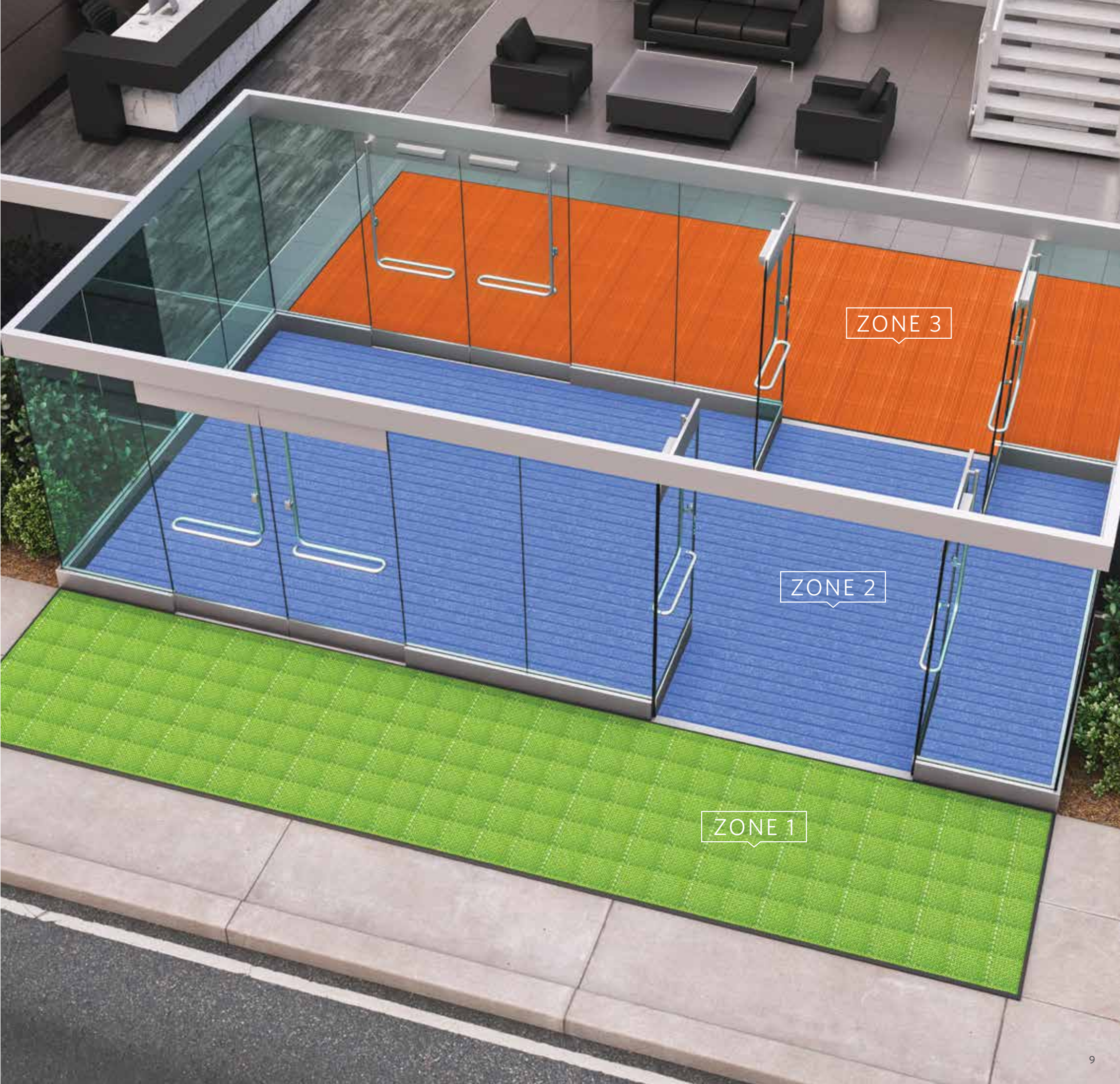
**Goal:** Collect dirt, debris, and moisture

### ZONE 3 | INDOORS

**Location:** Primary area(s) inside building

**Recommendation:** Product with high absorption qualities

**Goal:** Remove remaining moisture and small particles







# Introducing **OBEX** **VIA**<sup>™</sup>

Our **Variable Installation Approach (VIA)** means you don't have to settle for generic, one-size-fits-all entrance flooring.

OBEX<sup>™</sup> VIA is our site-specific analysis that starts with an assessment of your facility's unique environment, specific needs, and challenges.

We then match your requirements with our offering of effective Forms and industry-proven Materials.

Finally, VIA focuses the conversation on your preferences, resulting in a tailored entrance flooring system that delivers both performance and protection.

**O**

## **Objective - What do you need your entry to do?**

Factor in variables such as weather conditions and the intensity of foot, rolled, and heavy cart traffic.

**B**

## **Barrier Level - Where and to what degree do you need protection?**

Assess each Zone along the entry pathway, including vestibules, lobbies, and transition areas to determine available linear walk-off distance.

**E**

## **Enhance - What look and style do you want?**

Review options for color and pattern, as well as coordination with interior flooring products and any identity branding you may want.

**X**

## **Execute**

Based on your answers to the previous questions, we can now identify and recommend the most effective, customized system of OBEX<sup>™</sup> Forms and Materials.

# Bar Specifications

OBEX™ Mono	OBEX™ Cut
<b>Bar Material</b> Extruded Aluminum Profile with foam base layer	<b>Bar Material</b> Extruded Aluminum Profile with foam base layer
<b>Profile Width</b> 2.72" (69 mm)	<b>Profile Width</b> 2.72" (69 mm)
<b>Nominal Total Thickness</b> 0.43" (11 mm)	<b>Nominal Total Thickness</b> 0.43" (11 mm)
<b>Bar Color</b> Aluminum (Silver)	<b>Bar Color</b> Aluminum (Silver)
<b>Textile Construction</b> Cut Pile	<b>Textile Construction</b> Cut Pile
<b>Textile Yarn Type</b> Econyl® Monofilament	<b>Textile Yarn Type</b> Econyl® Nylon and Monofilament, twisted and heat-set multi/ monofilaments
<b>Textile Dye Method</b> Solution Dyed	<b>Textile Dye Method</b> DDI (Digital Dyed Infusion)
<b>Nominal Total Weight</b> 27.39 oz/ft² (8,360 g/m²)	<b>Nominal Total Weight</b> 32.28 oz/ft² (9,850 g/m²)
<b>Outdoor Temperature Resistance</b> -22° F to +122° F (-30° C to 50° C)	<b>Outdoor Temperature Resistance</b> -22° F to +122° F (-30° C to 50° C)

# Quick Reference Guide

Form - Material	Zone Application			Dirt/Debris Removal			Moisture Absorption			Installation Approach		
	Z1	Z2	Z3	Good	Better	Best	Good	Better	Best	Recessed	Surface	Wall to Wall
Bar - Mono	•	•			•		•			•	•	•
Bar - Cut		•				•		•		•	•	•
Grid 11 mm Open - Vinyl	•	•		•			•			•	•	•
Grid 11mm Closed - Vinyl		•		•			•			•	•	•
Grid 11 mm Open - Mono	•	•			•		•			•	•	•
Grid 11mm Closed - Mono		•			•		•			•	•	•
Grid 11 mm Open - CutX		•				•		•		•	•	•
Grid 11 mm Closed - CutX		•				•		•		•	•	•
Tile - Cut		•	•		•				•	•	•	•
Tile - CutX		•	•			•		•		•	•	•
Tile - Loop			•	•				•		•	•	•
Roll - Mono	•	•			•		•			•	•	•
Roll - Cut		•	•		•		•	•	•	•	•	•
Roll - CutX		•	•			•		•		•	•	•
Roll - Loop			•	•			•	•	•	•	•	•
Mat - Mono	•				•		•				•	
Mat - Cut			•		•				•		•	
Mat - CutX			•			•		•			•	



# OBEX™ | Milliken™ Entrance Flooring

Milliken's integrated OBEX™ system of Forms and Materials optimizes safety, wellness and design from the outside in.



Milliken™