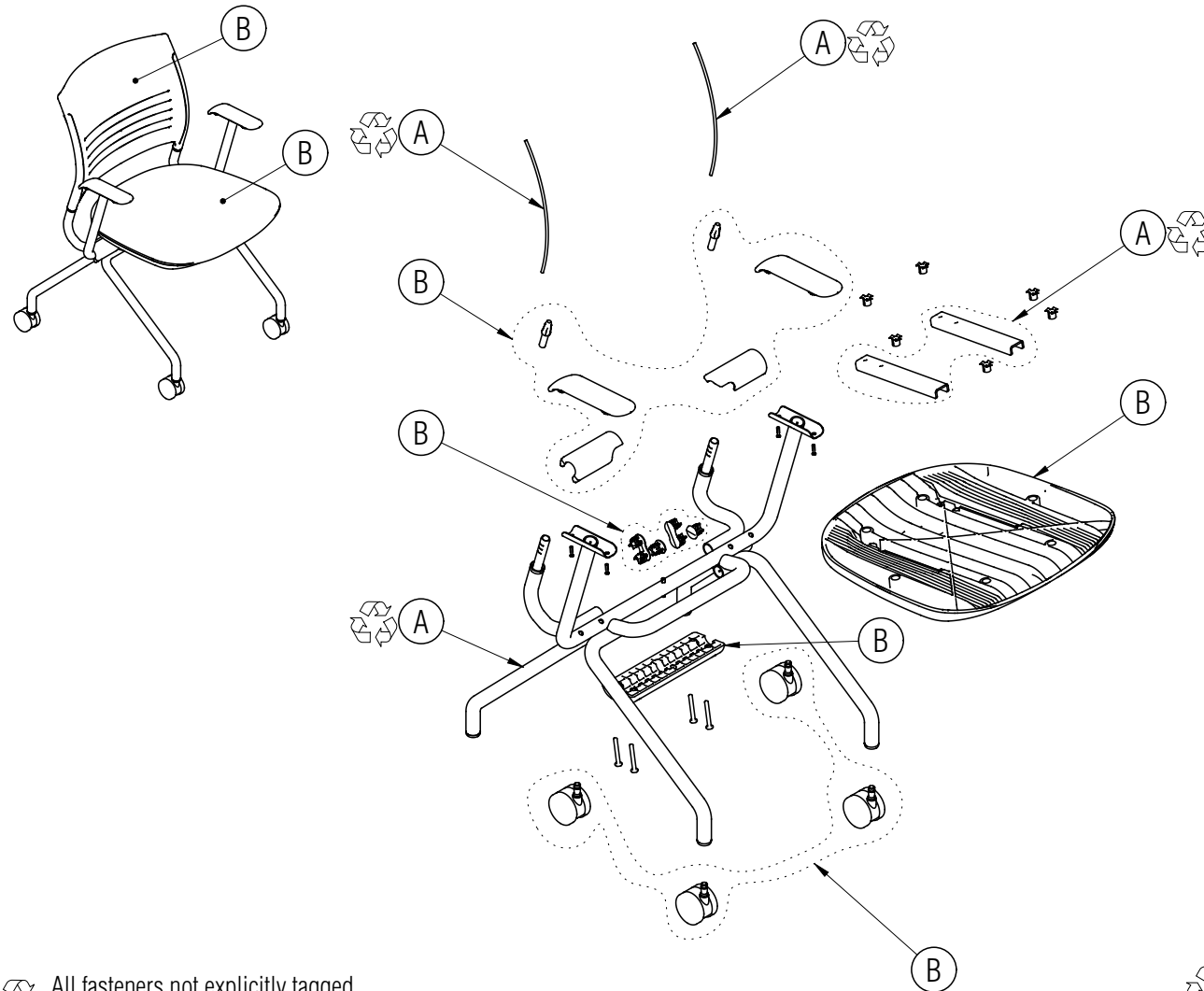


# Disassembly Instructions

## Strive Nesting Chair

Material Type: A . Steel B. Plastic



### Procedure:

1. Knock the backrest upwards off the chair frame from underneath. Pull out the backrest springs and the spring bushings.
2. Remove the screws holding the seat to the seat pan and remove the seat.
3. Remove the screws holding the counterweight to the seat shroud and remove the seat shroud and counterweight. Pry out the metal clips from the shroud.
4. Pry off the trim covers from the frame. Pry out the plugs from underneath the chair frame.
5. Remove the screws holding each arm cap to the chair frame and remove the arm caps.
6. Remove the casters from the chair base.

### General Notes:

1. Disassembly time: 15-20 minutes
2. This procedure assumes basic familiarity with hand tools and furniture terminology: no specialized training is required
3. All materials removed and disassembled shall be sorted and segregated with like materials and disposed of or recycled according to recycling availability or waste acceptance
4. For items to be recycled, refer to KI's End of Life Recycling Matrix and KI's End of Life Recovery Options Matrix, available at [www.ki.com](http://www.ki.com)

All fasteners not explicitly tagged are Material Type A: Steel

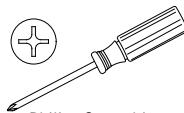
### Required Tools



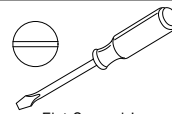
Gloves



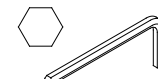
Safety Glasses



Phillips Screwdriver



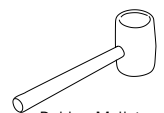
Flat Screwdriver



Allen Wrench



Channel Lock Pliers



Rubber Mallet