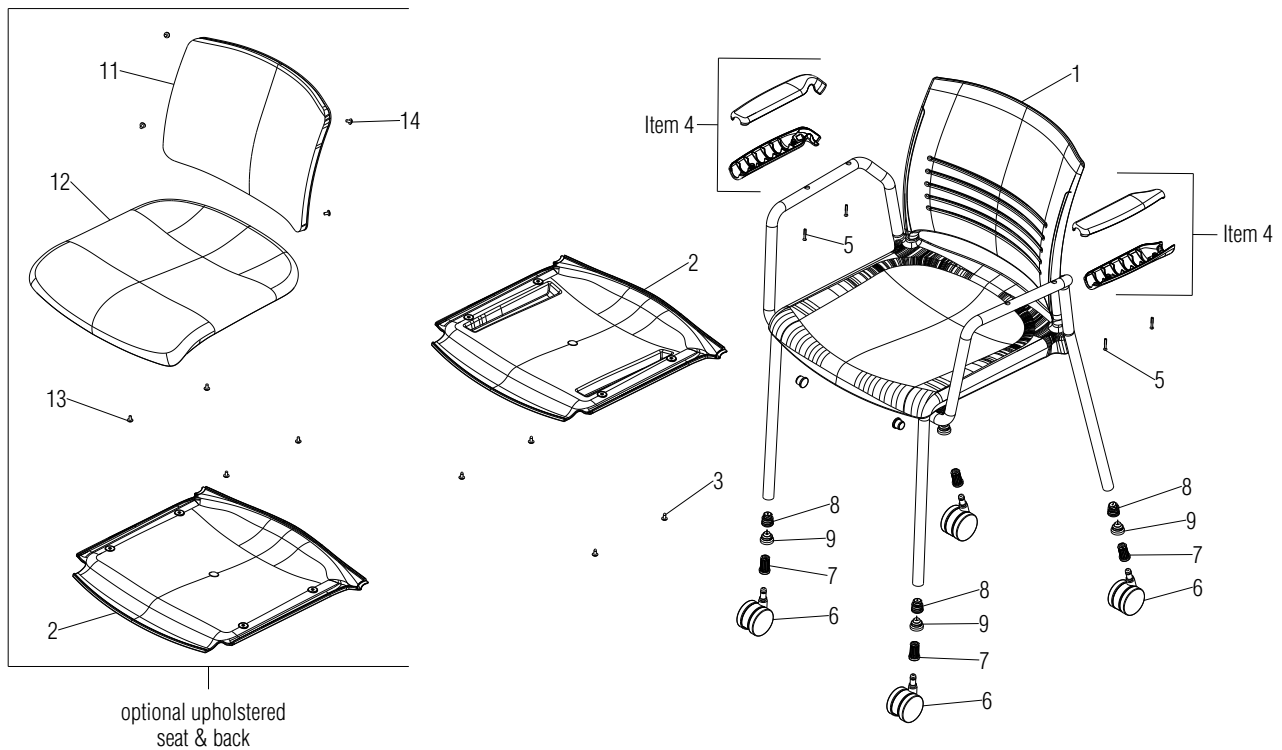


Parts Diagram

Strive® Seating

4-Leg Loop Stack Armchair & Cafe Stool

August 2019



.XX = Select Color

Note: Casters may not be retrofitted to chair frames manufactured with glides.

Item 1 is a replacement chair that includes all parts (seat/back/frame are not servicable).

Items 6 & 7 are for the caster chair model only. Not available on stools.

Item	Part Number	Item Description	Req Qty	Item	Part Number	Item Description	Req Qty
1	SRFP	Replacement Armchair, Poly	1	8	10.0220.X	Glide, Swivel Poly (includes cap)	4
	SRFU	Replacement Armchair, Upholstered Seat	1		10.0190.X	Glide, Steel	4
	SRFB	Replacement Armchair, Upholstered Seat & Back	1		53.6550.XX.X	Glide, Plastic (used before 9/26/18)	4
2	46.2240.BL.X	Shroud, Seat with Bumpers (poly chair)	1		10.0222.X	Glide, Swivel Felt (includes cap)	4
	46.2228.BL.X	Shroud, Seat (upholstered chair)	1		10.0192.X	Glide, Wallsaver Carpet (wallsaver chair only)	4
3	12.0011.X	Screw, M6 x 18mm PPH BosScrew	4	9	10.0221.X	Cap, Swivel Poly Glide	4
4	STV.CA.XX.X	Arm Cap Set, Right & Left Hand	1		10.0223.X	Cap, Swivel Felt Glide	4
5	13.6022.X	Screw, #8 x 5/8" TX OV HD T-B BLK OX	4	10	10.0138.X	Removal Tool, Swivel Glide Cap (not shown)	1
6	09.0440.XX.X	Caster, 60mm Diameter Carpet (caster chair only)	4	11	STRBC	Assembly, Upholstered Backrest Cushion	1
	09.0441.BL.X	Caster, 60mm Diameter Hard Floor (caster chair only)	1	12	STRRC	Assembly, Upholstered Seat Cushion	1
7	46.5397.BL.X	Assembly, Caster Bushing (caster chair only)	1	13	12.0055.CZ.X	Screw, #10-16 x 1/2" Type AB T/F BLK ZC	4
				14	12.0111.XX.X	Screw, #10-24 x 3/8" PTH M/S ZC w/ PATCH	4

