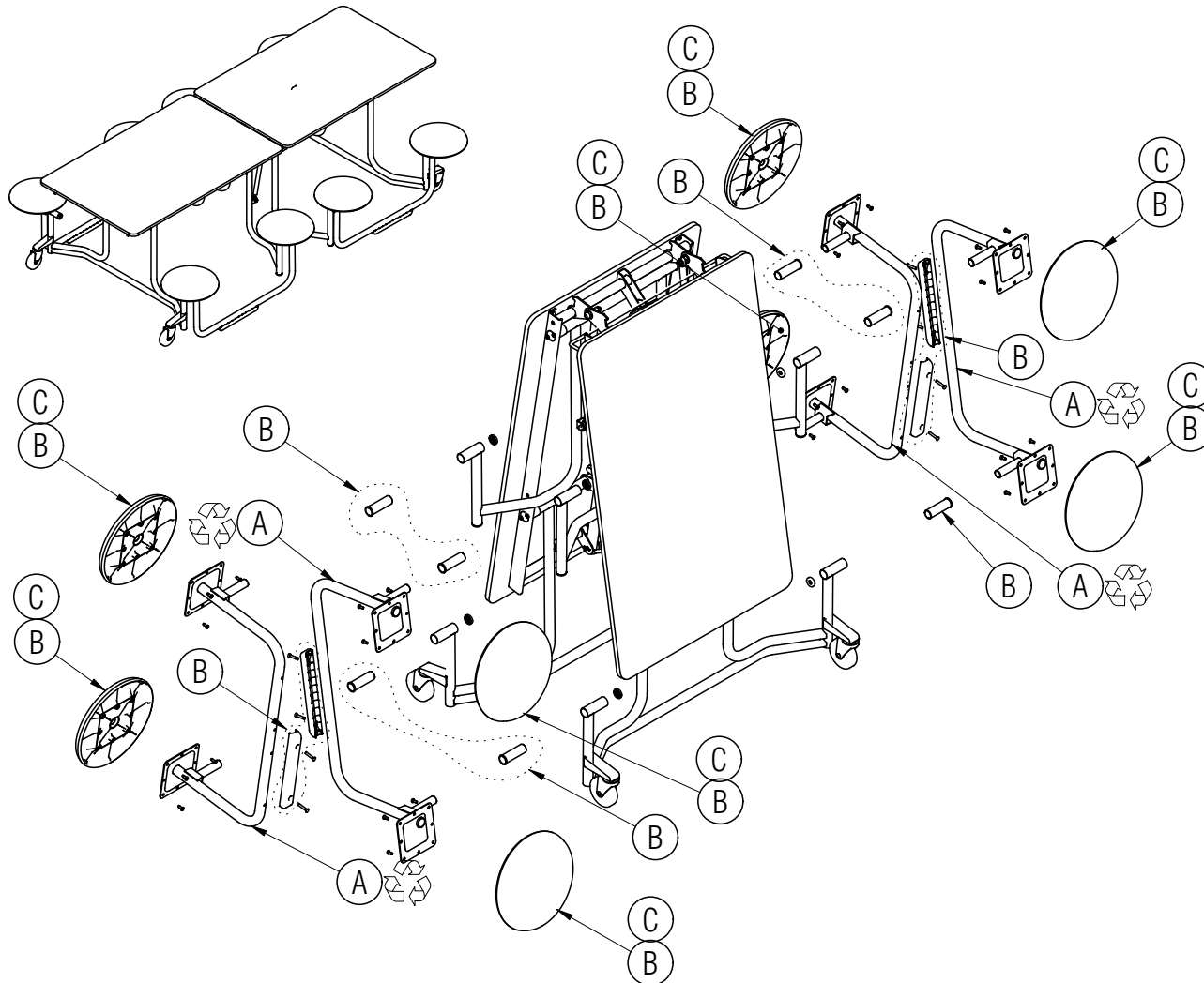


# Disassembly Instructions

## Uniframe Table

Material Type: A . Steel B. Plastic C. Wood / Wood Composite



### Procedure:

1. In the FOLDED UP POSITION, remove the screws holding each seat to the seat support and remove the seats.
2. Remove the screws holding the glides to the seat support and remove the glides.
3. Pry off the tube end enclosures holding the seat supports to the table frame and pull the seat supports away from the frame. Pry out the plastic bearing sleeves from the pivot tubes in the table frame.

### General Notes:

1. Disassembly time: 25-40 minutes
2. This procedure assumes basic familiarity with hand tools and furniture terminology: no specialized training is required
3. All materials removed and disassembled shall be sorted and segregated with like materials and disposed of or recycled according to recycling availability or waste acceptance
4. For items to be recycled, refer to KI's End of Life Recycling Matrix and KI's End of Life Recovery Options Matrix, available at [www.ki.com](http://www.ki.com)

All fasteners not explicitly tagged are Material Type A: Steel

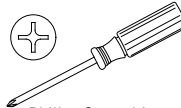
### Required Tools



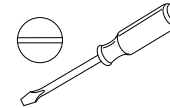
Gloves



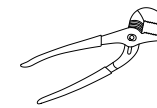
Safety Glasses



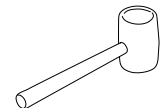
Philips Screwdriver



Flat Screwdriver



Channel Lock Pliers

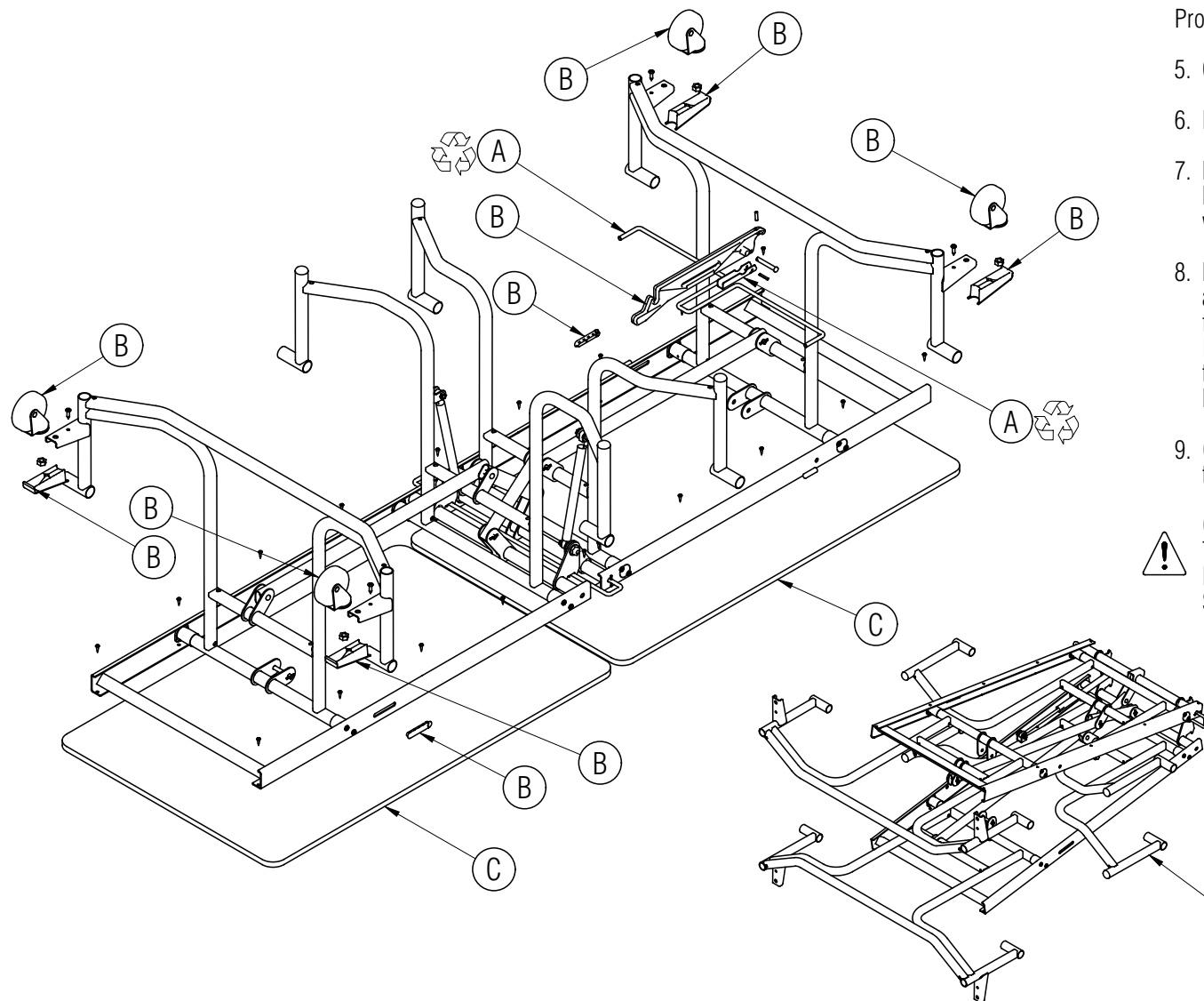


Rubber Mallet

# Disassembly Instructions

## Uniframe Table

Material Type:      A . Steel      B. Plastic      C. Wood / Particle Core



Procedure (continued):

5. Gently push the folded table downwards into the open position.
6. Flip the table over in the open position.
7. Remove the screws holding the cover plates over the caster housings and remove the housings. Remove the nut and star washer from the caster stem and remove the casters.
8. Remove the split pin in the clevis pin holding the plastic latch and remove the clevis pin. Remove the plastic cover plates from the table apron and lift out the latch, latch actuator and latch bar by sliding the latch bar sideways to disengage it from the table frame. Remove the split pin holding the latch actuator bracket onto the latch and remove the bracket.
9. Carefully fold the table frame together by flipping one side onto the other.



**CAUTION: DO NOT DISASSEMBLE ANY FURTHER!**  
THERE ARE INTERNAL TORSION BARS THAT ARE UNDER LOAD. ALL THE REMAINING COMPONENTS ARE STEEL AND SHOULD BE DISPOSED OF ASSEMBLED TOGETHER.

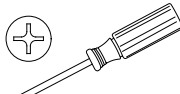
### Required Tools



Gloves



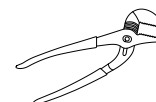
Safety Glasses



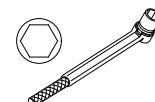
Philips Screwdriver



Pry Bar



Channel Lock Pliers



Hex Socket Wrench