

we-ef

WE-EF LIGHTING USA LLC

410-D Keystone Drive
Warrendale, PA 15086
USA

Tel +1 724 742 0030

Fax +1 724 742 0035

info.usa@we-ef.com

www.we-ef.com

we-ef

WE-EF LIGHTING USA LLC

Installation and Maintenance

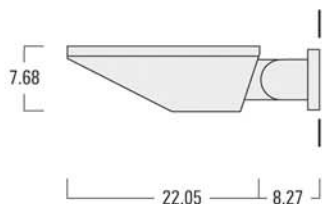
Instructions for Surface Mounted Wall Luminaires

PIA240 / PIA260

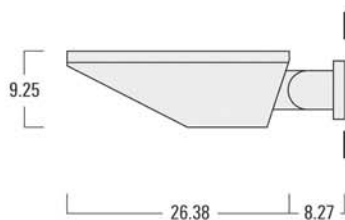


Installation and Maintenance Instructions for Surface Mounted Wall Luminaires:

PIA240



PIA260



Light source:

CMH 20 - 315W
CFM 32 - 57W
PSMH 250 - 400W

This product should be installed in accordance with the applicable installation code by a person familiar with the construction and operation of the product and the hazards involved. Be sure the electrical supply is off prior to installation.

PIA240 and PIA260 luminaires are intended to be positioned over a recessed junction box with min. 90° C power feed electrical leads extending at least 18" from the box. Connection to be made in fixture.

1.) Remove luminaire from shipping carton and open lens frame **E** by loosening (4) M5 captive fasteners **D**.

2.) Release the quarter turn fastener **F** located on the ballast tray assembly **G** and detach the terminal connectors **H** leading to the power supply and remove the wire nuts from the socket leads. Remove the ballast tray assembly.

3.) Remove the (2) socket head cap screws **B** (10mm hex key required) to release the mounting plate.

4.) Pull the power feed leads through the center hole in the mounting plate **A** and secure the mounting plate to the mounting surface through the (2) 1/2" Dia. mounting holes **I** provided. Suitable fasteners for the wall construction type to be provided by installer.

5.) Lift fixture into place feeding power feed wires through the flexible conduit stub. Secure to mounting plate with the (2) socket head cap screws **B** and flat washers removed in step #3.

6.) Check that the electrical supply conforms with the ratings shown on the fixture labels.

7.) Make the electrical connection inside the fixture.

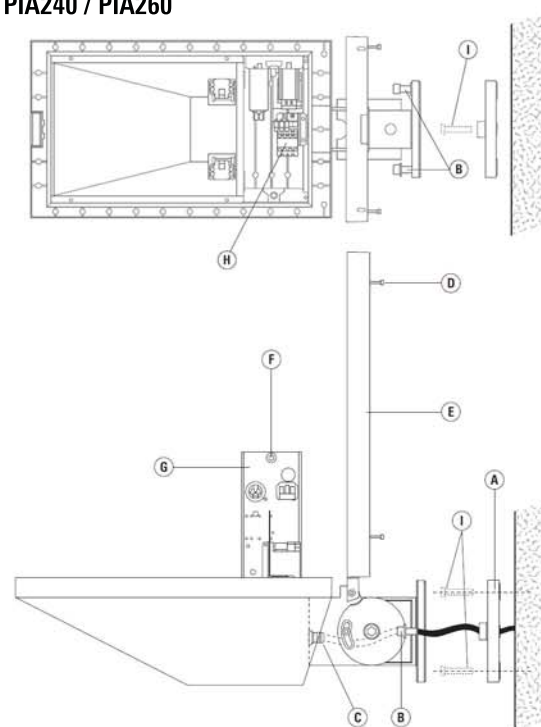
Note that the power supply wires must be routed behind the connection bracket H (see photo).

8.) Install the ballast tray assembly **G** removed in step #2.

9.) Install the appropriate lamp as marked on the fixture label.

10.) Reposition the lens frame and evenly tighten the (4) M5 captive fasteners **D**.

PIA240 / PIA260



Connection Bracket H



Lamp Replacement and Maintenance:

Do not open luminaire while in operation or while mains supply is switched on!

1. Switch off the electrical supply.
2. Open luminaire and clean all exterior surfaces.
3. Replace lamp
4. Check gasket for dirt and damage and clean or replace if necessary.
5. Close luminaire.

Protect our environment: Discard used lamps in compliance with the most recent environmental legislation.