

we-ef

WE-EF LIGHTING USA LLC

410-D Keystone Drive
Warrendale, PA 15086
USA
Tel +1 724 742 0030
Fax +1 724 742 0035
info.usa@we-ef.com
www.we-ef.com

we-ef

WE-EF LIGHTING USA LLC

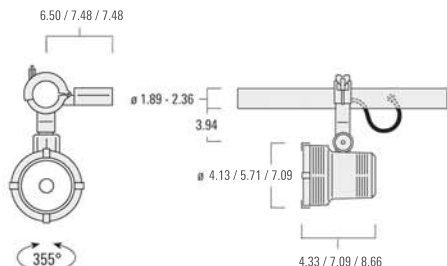
Installation and Maintenance
RAIL66 Projectors and Floodlights
FLC121 / FLC131 / FLC141
FLC121 LED / FLC131 LED / FLC141 LED
FLB141



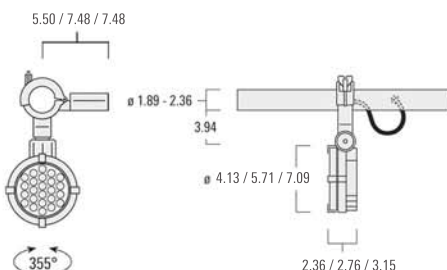
Technical specifications are subject to change
© WE-EF 2013

Installation and Maintenance Instructions for RAIL66 Projectors and Floodlights

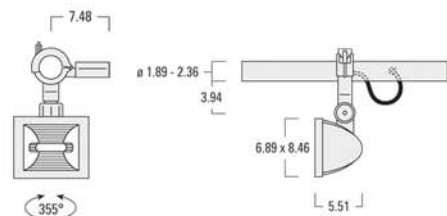
FLC121 / FLC131 / FLC141



FLC121 LED / FLC131 LED / FLC141 LED



FLB141



Light source:

FLC100 Series	CMH 22 - 150W QT 50W CFM 18 - 32W
FLC100 LED Series	LED 6 - 24W
FLB141	CMH 39 - 150W CFM 26

This product should be installed in accordance with the applicable installation code by a person familiar with the construction and operation of the product and the hazards involved. Be sure the electrical supply is off prior to installation.

Prior to installing the luminaire, mount and connect the selected RAIL66 mounting system in accordance with relevant installation instructions.

For FLC100 series and FLB141, install proper lamp by following steps #1-3. For FLC100 series LED, LED circuit board is factory installed. Opening of luminaire head is not required. Begin installation instructions for FLC100 series LED with step #4.

1) Detach lens frame assembly **A** by releasing screws **B**.

2) Fit appropriate lamp **C**, as specified on the luminaire label by inserting it firmly into the lampholder.

3) Reposition lens frame assembly **A** and secure in position by evenly tightening screws **B**.

4) Determine desired position of luminaire **D** on rail **X**, dependent on aiming requirements and proximity to a suitable mains outlet **Y**.

5) Attach clamp **E** to rail **X**. Tighten wingnut **F** firmly.

6) Remove protective cover **Z** from mains outlet **Y**. Insert in-line connector **G** and tighten firmly.

Important: On any mains outlet **Y** that is not used, protective cover **Z** must remain firmly secured. Check and ensure proper fit and tightness.

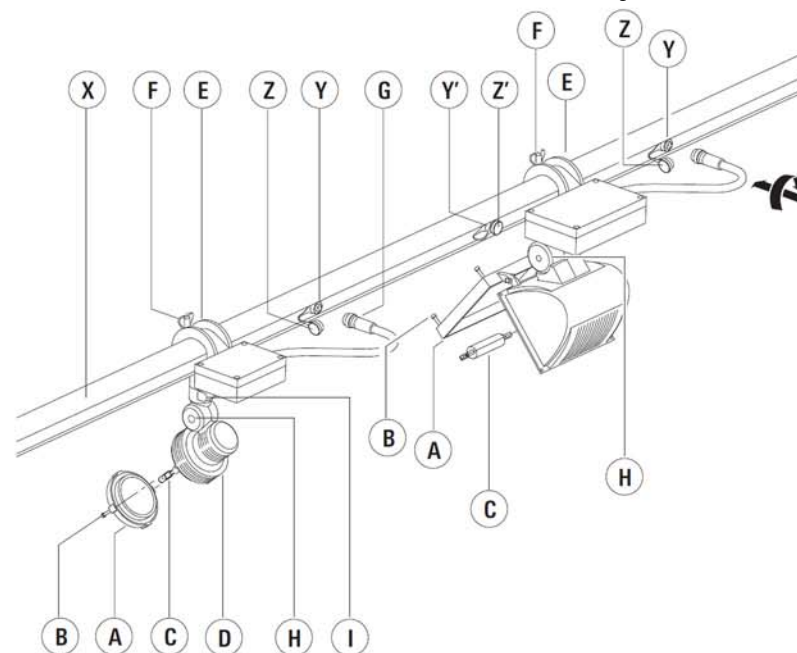
7) Loosen screws **H** and **I** slightly, then aim luminaire in desired direction. Tighten screws **H** and **I** firmly.

Lamp Replacement and Maintenance:

Do not open luminaire while in operation or while mains supply is switched on!

1. Switch off the electrical supply.
2. Open luminaire and clean all exterior surfaces.
3. Replace lamp / Replace entire LED printed circuit board (**Installer must be properly grounded and familiar with ESD damage prevention methods**).
4. Check gasket for dirt and damage and clean or replace if necessary.
5. Close luminaire.

Protect our environment: Discard used lamps in compliance with the most recent environmental legislation.



we-ef

WE-EF LIGHTING USA LLC

410-D Keystone Drive
Warrendale, PA 15086
USA

Tel +1 724 742 0030

Fax +1 724 742 0035

info.usa@we-ef.com

www.we-ef.com

we-ef

WE-EF LIGHTING USA LLC

Installation and Maintenance
Projector and Floodlight Mounting System

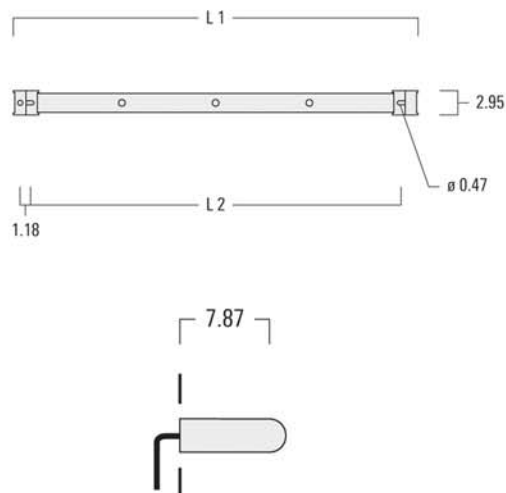
RAIL66 Universal



Technical specifications are subject to change
© WE-EF 2013

Installation and Maintenance Instructions for RAIL66 Projector and Floodlight Mount- ing System

RAIL66 Universal



This product should be installed in accordance with the applicable installation code by a person familiar with the construction and operation of the product and the hazards involved. Be sure the electrical supply is off prior to installation.

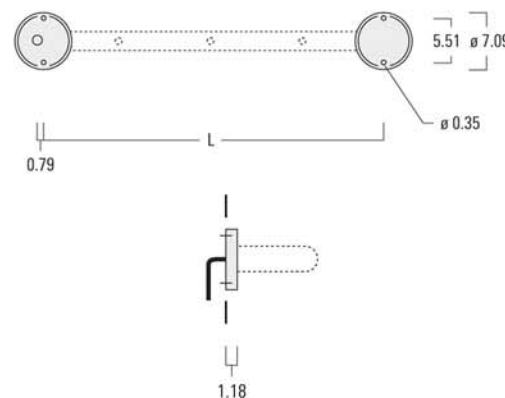
RAIL66 versions may be mounted to a variety of surfaces. Care must be taken to ensure that mounting is appropriate to prevailing site conditions, including structural and wind loads etc.

RAIL66 Universal

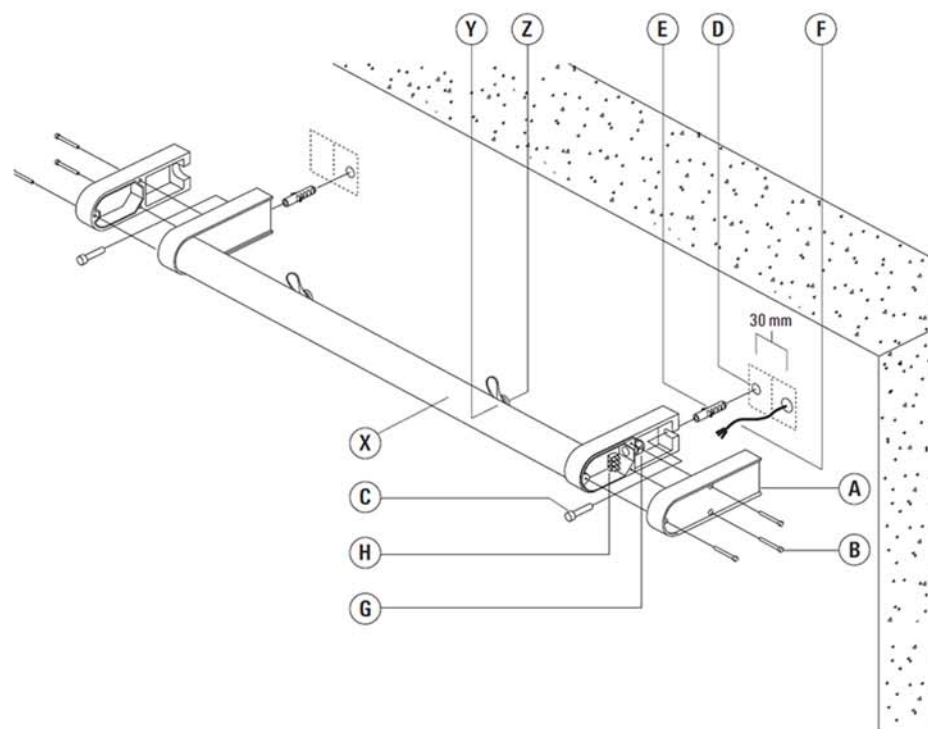
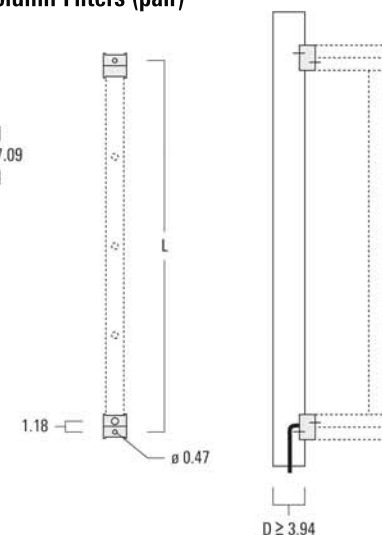
- 1) Remove covers **A** by releasing screws **B**.
- 2) Check that rating shown on product label conforms to the ratings shown on the luminaire label and/or ballast.
- 3) Determine the position for fixing bolts **C**. Make arrangements for the appropriate fasteners suitable to the mounting surface.
- 4) Attach the rail assembly **X** with the appropriate fasteners for the mounting surface.
- 5) Attach the power supply flexible conduit **F** to the 1/2" threaded hub **G**.
- 6) Make the electrical connection to the respective terminals in terminal block **H**.
- 7) Ensure that all surfaces are clean and dry, then reposition covers **A**. Evenly tighten screws **B** in a criss-cross pattern for proper gasket compression.
- 8) So as to ensure reliable power connections and electrical safety, pay particular attention to the proper fit and tightness of the fixture's in-line connector and the protective covers **Z** to unused power outlets **Y**. Remove cover(s) only when installing luminaires.
- 9) For luminaire installation, refer to installation instructions for RAIL66 Projectors and Floodlights FLC121 / FLC131 / FLC141 / FLB141.

Optional Mounting Accessories

Flat Surface Filter (pair)



Column Filters (pair)



we-ef

WE-EF LIGHTING USA LLC

410-D Keystone Drive
Warrendale, PA 15086
USA

Tel +1 724 742 0030

Fax +1 724 742 0035

info.usa@we-ef.com

www.we-ef.com

we-ef

WE-EF LIGHTING USA LLC

Installation and Maintenance
Projector and Floodlight Mounting System

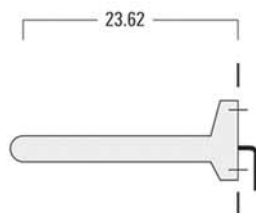
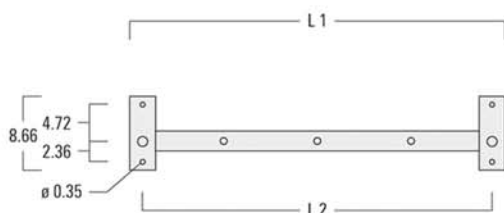
RAIL66 Cantilever



Technical specifications are subject to change
© WE-EF 2013

Installation and Maintenance Instructions for RAIL66 Projector and Floodlight Mount- ing System

RAIL66 Cantilever



This product should be installed in accordance with the applicable installation code by a person familiar with the construction and operation of the product and the hazards involved. Be sure the electrical supply is off prior to installation.

RAIL66 versions may be mounted to a variety of surfaces. Care must be taken to ensure that mounting is appropriate to prevailing site conditions, including structural and wind loads etc.

RAIL66 Cantilever

- 1) Remove covers **A** by releasing screws **B**.
- 2) Check that rating shown on product label conforms to the ratings shown on the luminaire label and/or ballast.
- 3) Remove wall flanges **C** by releasing screws **D**.
- 4) Determine the position for fixing bolts **E**. Make arrangements for the appropriate fasteners suitable to the mounting surface.
- 5) Feed mains supply cable **H** through grommet **I**, while setting and fixing wall flanges **C** in position. **Important:** Bolts **E** should only be fully tightened after alignment has been confirmed.
- 6) Make the electrical connection to the respective terminals in terminal connector **J**.
- 7) Slide rail assembly **X** carefully over wall flanges **C**. Pay particular attention to tension-free alignment of terminal connector **J**. Tighten screws **D** in a criss-cross pattern for proper gasket compression, evenly and firmly.
Caution: in the process, do not apply any load to rail assembly **X**.

8) Tighten bolts **E** firmly.

9) Reposition covers **A** and secure in position by tightening screws **B**.

10) So as to ensure reliable power connections and electrical safety, pay particular attention to the proper fit and tightness of the fixture's in-line connector and the protective covers **Z** to unused power outlets **Y**. Remove cover(s) only when installing luminaires.

11) For luminaire installation, refer to installation instructions for RAIL66 projectors and floodlights FLC121 / FLC131 / FLC141 / FLB141.

