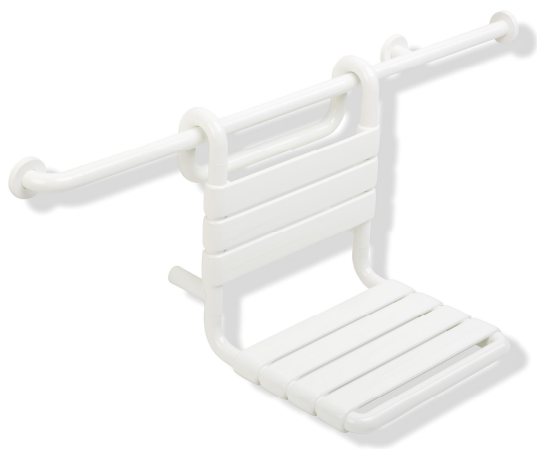


**Product data sheet**  
**Removable hanging seat (USA) 801.51US110**

# HEWI

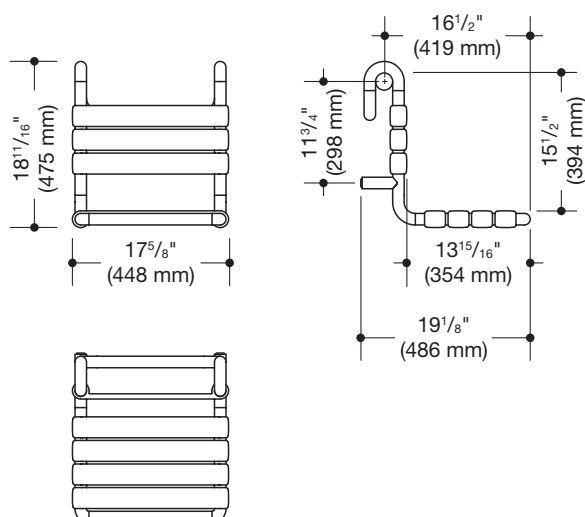
**Available in USA**



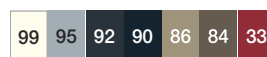
**Removable hanging seat (USA) 801.51US110**

- design made from rails, seat and backrest elements
- with corrosion-protected steel core throughout
- functions as a removable seat in the shower area
- can be hung on the shower grab rail and grab bar (USA), rail diameter 2 3/4 inch (33 mm)
- 17 5/8 inch (448 mm) wide, 18 11/16 inch (475 mm) high, 19 1/8 inch (486 mm) deep
- seat area 17 5/8 inch (448 mm) wide, 13 15/16 inch (354 mm) deep
- seat elements 2 3/16 inch (55 mm) wide
- maximum loading capacity 330 lbs (150 kg)
- made from high-grade synthetic material in the HEWI colors 99 (pure white), 95 (stone gray), 92 (anthracite gray), 90 (jet black), 86 (sand), 84 (umber) and 33 (ruby red)

**Dimensions**



**Colors**



Polyamide

Technical information subject to alteration, September 2nd, 2019

HEWI Inc.  
 80 Pine Street, 24th Floor  
 New York, NY 10005

Phone: 646 405-1032  
 Fax: 646 405-1027

hewi@hewi.us  
 www.hewi.com