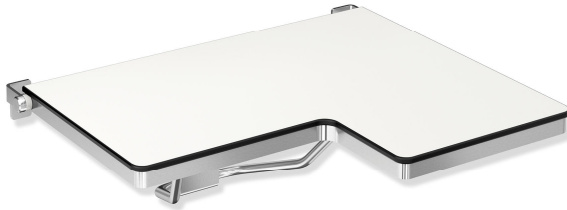


## Product data sheet

### L-shaped shower compartment seat with lift-up feature (USA) 900.51.206XA

# HEWI



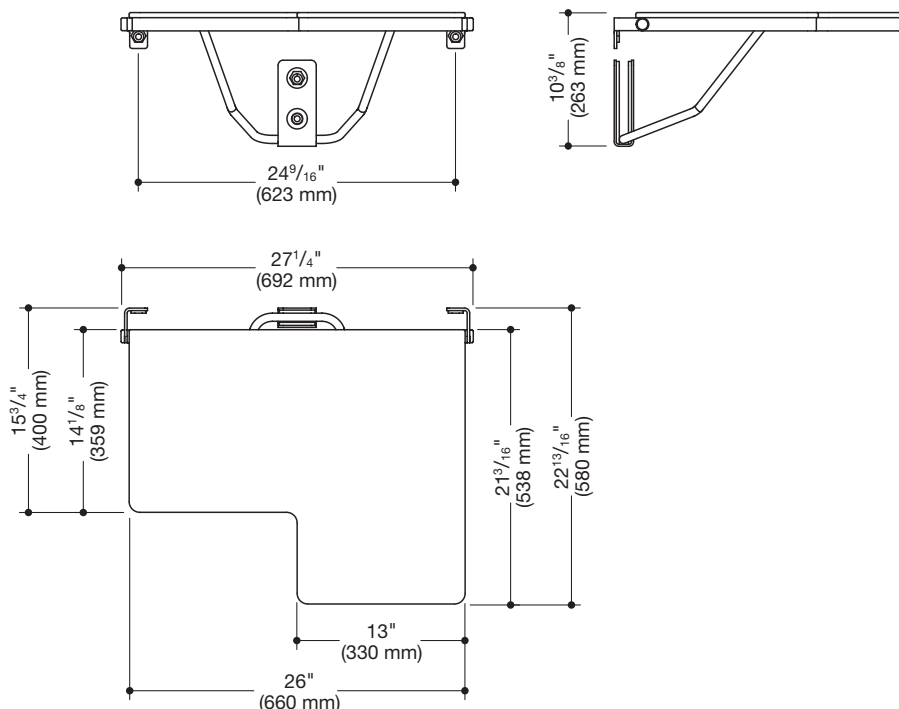
#### L-shaped shower compartment seat with lift-up feature (USA) 900.51.206XA

- made of high-quality stainless steel with one-piece HPL seat, screwed from the underside
- functions as a secure seat in the shower area
- can be folded up
- wall bracket made of stainless steel
- projecting seat element left
- narrow seat element: 13 inch (330 mm) wide and 15 3/4 inch (400 mm) deep
- projecting seat element: 13 inch (330 mm) wide and 22 13/16 inch (580 mm) deep
- low-maintenance brakes on shower seat allow seat surface to remain in an upright position after folding up
- surfaces enable easy cleaning and hygiene
- additional wall support with high-quality stainless steel bracket with stainless steel wall bracket
- includes fixing material for mounting to cavity walls with wood backlining of two 2 inch x 12 inch laminate or hardwood boards connected with a 1/2 inch x 12 inch plywood board
- maximum loading capacity 450 lbs (204 kg)
- meets requirements according to 2010 ADA standards and ICC / ANSI A117.1-2009
- shipping only possible on pallet



ADA compliant

#### Dimensions



Technical information subject to alteration, September 2nd, 2019

HEWI Inc.  
80 Pine Street, 24th Floor  
New York, NY 10005

Phone: 646 405-1032  
Fax: 646 405-1027

hewi@hewi.us  
www.hewi.com