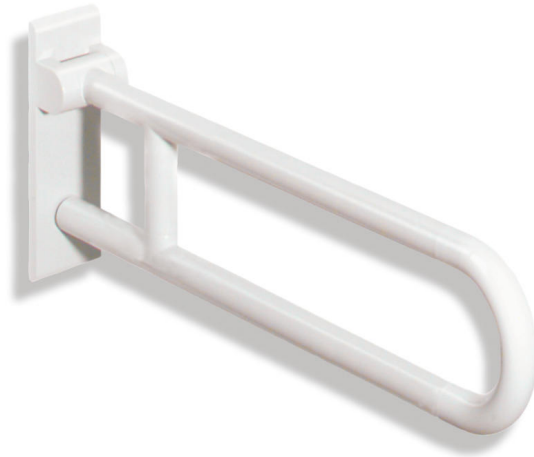


**Product data sheet**  
**Swing-up grab bar, rotatable (USA) 801.50US140**

# HEWI

**Available in USA**



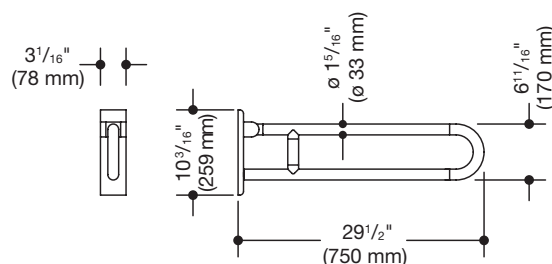
Similar picture

**Swing-up grab bar, rotatable (USA) 801.50US140**

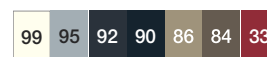
- two stacked parallel rails joined together with a connecting arch
- for holding onto and as a support
- load capacity up to 220.5 lbs (100 kg)
- with corrosion-protected steel core throughout and wall plate made from synthetic material with integrated steel core
- can be folded up and curved to fold down and turned left or right to the wall in upward folded position
- wall mounting with wall-specific HEWI fixing material
- concealed fastening
- projection 29 1/2 inch (750 mm), 10 3/16 inch (259 mm) high and 3 1/16 inch (78 mm) wide, rail diameter 1 5/16 (33 mm)
- made from high-grade synthetic material in the HEWI colors 99 (pure white), 95 (stone gray), 92 (anthracite gray), 90 (jet black), 86 (sand), 84 (umber) and 33 (ruby red)
- toilet paper holder upgrade kit 801.50US010 can be retrofitted
- CE marking as per directive 93/42/ EWG



**Dimensions**



**Colors**



Polyamide

Technical information subject to alteration, September 2nd, 2019

HEWI Inc.  
 80 Pine Street, 24th Floor  
 New York, NY 10005

Phone: 646 405-1032  
 Fax: 646 405-1027

hewi@hewi.us  
 www.hewi.com