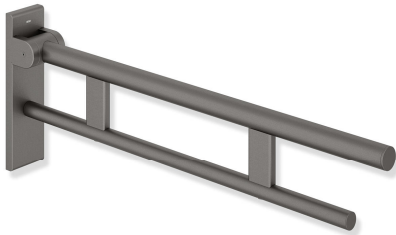


Product data sheet

Hinged support rail Duo, design (B), System 900
900.50.15960

HEWI



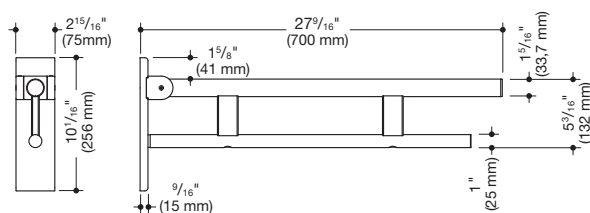
Hinged support rail Duo, design (B), System 900 900.50.15960

- two parallel, round gripping levels arranged on top of each other
- can be folded upwards and folded downwards with braked movement
- projection 27 9/16 inch (700 mm), 10 1/16 inch (256 mm) high and 2 15/16 inch (75 mm) wide, top grab bar diameter 1 5/16 inch (33.7 mm), bottom grab bar diameter 1 inch (25 mm)
- load capacity up to 220 lbs (100 kg)
- made of stainless steel, powder-coated in the HEWI colours DX (matt white), DC (matt black), AY (matt light gray pearl mica) and SC (matt dark gray pearl mica)
- wall plate made of polyamide with integrated steel core and cover made of stainless steel, powder-coated in the HEWI colours DX (matt white), DC (matt black), AY (matt light gray pearl mica) and SC (matt dark gray pearl mica)
- for mounting with non-corrosive and tested HEWI fixing materials for different wall systems (to be ordered separately)
- sealing tape for sealing the fixing points is included in the scope of supply
- floor supports 900.50.02060 and 900.50.02160 for retrofitting
- CE marking according to Directive 93/42/EEC
- fulfils the ÖNORM B1600/1601 and SIA 500 requirements



CE

Dimensions



Surfaces

DX	DC	AY	SC
----	----	----	----

Alternative surfaces

XA	Chr
----	-----

Technical information subject to alteration, September 2nd, 2019

HEWI Inc.
 80 Pine Street, 24th Floor
 New York, NY 10005

Phone: 646 405-1032
 Fax: 646 405-1027

hewi@hewi.us
 www.hewi.com