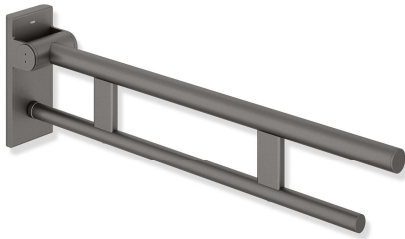


Product data sheet

Duo mobile hinged support rail, System 900
900.50.40460

HEWI



Similar picture

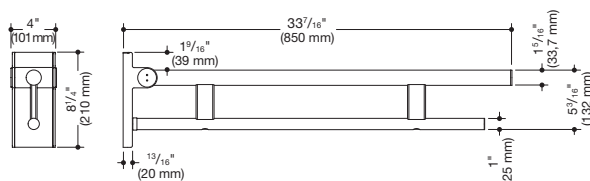
Duo mobile hinged support rail, System 900 900.50.40460

- two parallel, round gripping levels arranged on top of each other
- can be folded upwards and folded downwards with braked movement
- for mobile use
- for easy and flexible retrofitting on existing, preassembled mounting plate 900.50.00160, must be ordered separately
- toolless and quick installation by simple attachment of the hinged support rail
- secured by fixing screw to prevent unintentional removal
- projection 33 7/16 inch (850 mm), 8 1/4 inch (210 mm) high and 4 inch (101 mm) wide, top grab bar diameter 1 5/16 inch (33.7 mm), bottom grab bar diameter 1 inch (25 mm)
- load capacity up to 220 lbs (100 kg)
- made of stainless steel, powder-coated in the HEWI colours DX (matt white), DC (matt black), AY (matt light gray pearl mica) and SC (matt dark gray pearl mica)
- floor supports 900.50.02060 and 900.50.02160 for retrofitting
- CE marking according to Directive 93/42/EEC
- fulfils the DIN 18040, ÖNORM B1600/1601 and SIA 500 requirements



CE

Dimensions



Surfaces

DX	DC	AY	SC
----	----	----	----

Alternative surfaces

XA	Chr
----	-----

Technical information subject to alteration, September 2nd, 2019

HEWI Inc.
 80 Pine Street, 24th Floor
 New York, NY 10005

Phone: 646 405-1032
 Fax: 646 405-1027

hewi@hewi.us
 www.hewi.com