

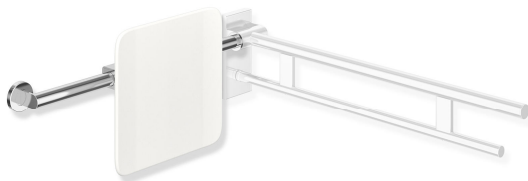
Product data sheet

Backrest rail, System 900 900.51.90240

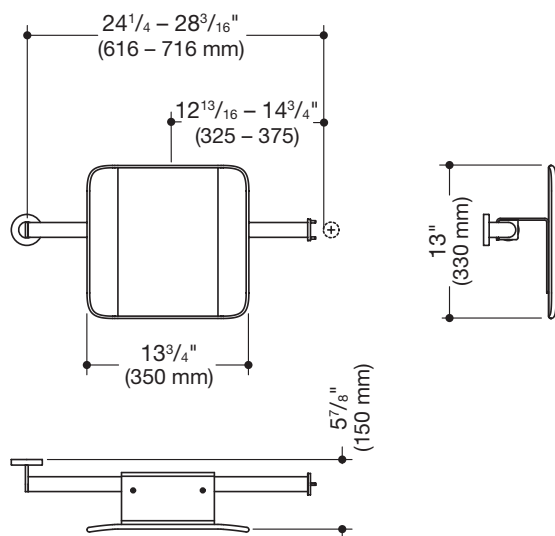
HEWI

Backrest rail, System 900 900.51.90240

- backrest with fixing rails on both sides
- serves as back support for toilet users
- one-sided installation on the wall with roses (right)
- one-sided fitting onto swing-up grab bar, design (A) from the System (left)
- 13 inch (330 mm) high and 5 7/8 inch (150 mm) deep, backrest 13 3/4 inch (350 mm) wide, bar diameter 1 1/4 inch (32 mm), tube thickness 1/16 inch (2 mm)
- centre-to-centre adjustable (clear dimension between the spar of the swing-up grab bar and the centre-to-centre of the wall fixing 24 1/4 - 28 3/16 inch (616-716 mm))
- backrest made of synthetic material in HEWI colors 98 (signal white) and 92 (anthracite gray)
- connection made of high-quality stainless steel, surface chrome
- including non-corrosive and tested HEWI fixing material
- fulfils the DIN 18040 and ÖNORM B1600/1601 requirements



Dimensions



Surface/Colors



Alternative surfaces/colors



Powder coatings

Technical information subject to alteration, September 2nd, 2019

HEWI Inc.
80 Pine Street, 24th Floor
New York, NY 10005

Phone: 646 405-1032
Fax: 646 405-1027

hewi@hewi.us
www.hewi.com