

Available in USA

Shower grab rail System 900 900.35.16440

- horizontally arranged rails connected at right-angles, with fixing trim
- left-hand version
- horizontal lengths 37 5/16 inch x 19 1/2 inch (947 x 495 mm), 2 3/4 inch (70 mm) deep
- rail diameter 1 1/4 inch (32 mm), tube thickness 1/16 inch (2 mm), rose diameter 2 3/4 inch (70 mm)
- load capacity up to 330 lbs (150 kg)
- made of high-quality stainless steel, chrome
- reduced number of fixing trim due to innovative corner connection
- including non-corrosive and tested HEWI fixing material for wall mounting and sealing tape for sealing the drilling points
- meets the requirements of 2010 ADA standards and ICC/ANSI A117.1-2009

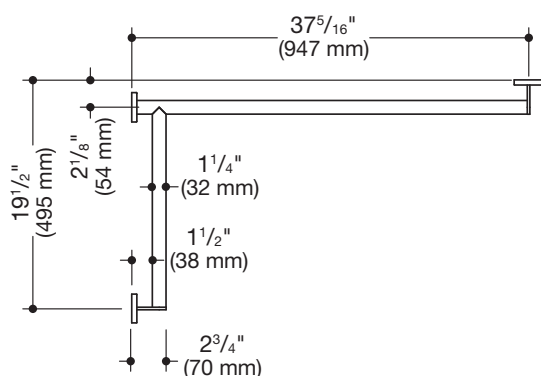


Similar picture



ADA compliant

Dimensions



Surface

Chr

Alternative surfaces

XA

DX

DC

AY

SC

Technical information subject to alteration, September 2nd, 2019

HEWI Inc.
80 Pine Street, 24th Floor
New York, NY 10005

Phone: 646 405-1032
Fax: 646 405-1027

hewi@hewi.us
www.hewi.com