

CORA SWIVEL COUNTER STOOL

Features

- Made in North Carolina from U.S. and imported materials
- 5 year warranty



Cora swivel counter stool in Holtz charcoal

Cora counter stool collection



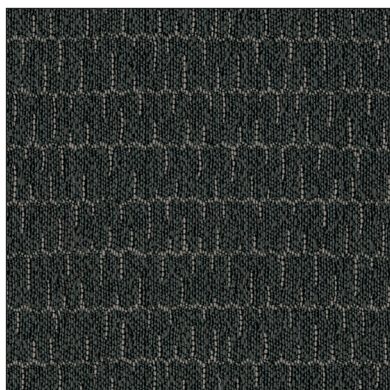
22w 23d 37h
swivel counter
stool

CORA

Features

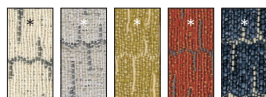
- Free swatches available
- Custom order in any Business Interiors approved leather or ACT® contract grade Room & Board fabric
- COM available upon request; ask us for details

ACT® contract grade stocked fabrics



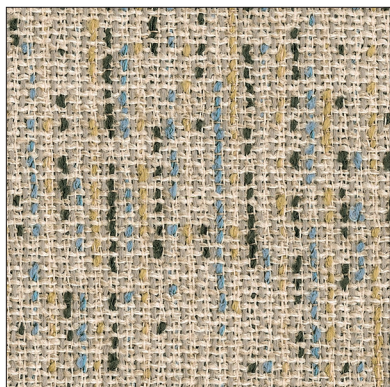
Holtz charcoal

PRICE GROUP: 3
APPLICATION: indoor upholstery
CONTENT: 47% cotton, 45% polyester, 8% rayon jacquard
FEATURES: —
CLEANING CODE: S, solvent based
WOVEN IN: United States
CERTIFICATIONS: ACT® contract grade



BACKING: acrylic latex
STAIN-REPELLENT FINISH: no
FABRIC DIRECTION: railroaded
FLAMMABILITY: passes CA TB 117-2013 Sect. 1
CROCKING: wet 3, dry 4
COLORFASTNESS: 4
PILLING: 3
ABRASION: 30,000 Wyzenbeek double rubs

ACT®
PERFORMANCE: 



Sym ink

PRICE GROUP: 2
APPLICATION: indoor upholstery
CONTENT: 74% polyester, 26% acrylic boucle
FEATURES: family/dog friendly, performance
CLEANING CODE: W, water based
WOVEN IN: United States



CERTIFICATIONS: ACT® contract grade
BACKING: acrylic latex
STAIN-REPELLENT FINISH: no
FABRIC DIRECTION: railroaded
FLAMMABILITY: passes CA TB 117-2013 Sect. 1
CROCKING: wet 3, dry 4
COLORFASTNESS: 4
PILLING: 4
ABRASION: 50,000 Wyzenbeek double rubs

ACT®
PERFORMANCE: 

CORA

Features

- Free swatches available
- Custom order in any Business Interiors approved leather or ACT® contract grade Room & Board fabric
- COM available upon request; ask us for details

ACT® contract grade stocked fabrics (continued)



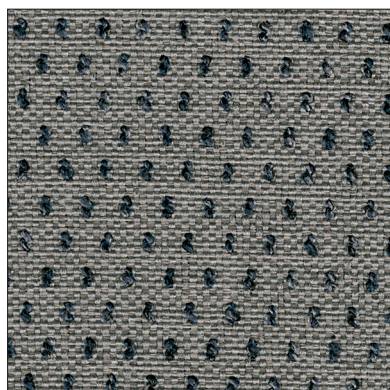
Tatum grey

PRICE GROUP: 2
APPLICATION: indoor upholstery
CONTENT: 64% polyester, 36% acrylic boucle
FEATURES: family/dog friendly, performance
CLEANING CODE: S, solvent based
WOVEN IN: United States

CERTIFICATIONS: ACT® contract grade
BACKING: acrylic latex
STAIN-REPELLENT FINISH: no
FABRIC DIRECTION: railroaded
FLAMMABILITY: passes CA TB 117-2013 Sect. 1
CROCKING: wet 3, dry 4
COLORFASTNESS: 4
PILLING: 4
ABRASION: 50,000 Wyzenbeek double rubs



ACT®
PERFORMANCE:
☑ ☑ ☑ ☑ ☑ ☑ ☑ ☑ ☑ ☑ ☑ ☑ ☑ ☑ ☑



Vyto ink

PRICE GROUP: 1
APPLICATION: indoor upholstery
CONTENT: 93% polypropylene, 7% polyester weave
FEATURES: family friendly, performance
CLEANING CODE: SW, solvent or water based
WOVEN IN: United States

CERTIFICATIONS: GREENGUARD Gold Certified® Revolution® Performance Fabric, ACT® contract grade
BACKING: acrylic latex
STAIN-REPELLENT FINISH: no
FABRIC DIRECTION: railroaded
FLAMMABILITY: passes CA TB 117-2013 Sect. 1
CROCKING: wet 5, dry 5
COLORFASTNESS: 4
PILLING: 4
ABRASION: 30,000 Wyzenbeek double rubs



ACT®
PERFORMANCE:
☑ ☑ ☑ ☑ ☑ ☑ ☑ ☑ ☑ ☑ ☑ ☑ ☑ ☑ ☑