

FLUXWERX®

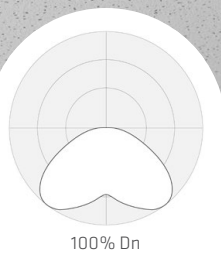
SPECIFICATION DATA

LOOP RECESSED 6"x1.5 (LR1-65)

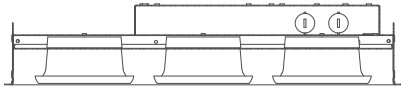
CATALOG

PROJECT

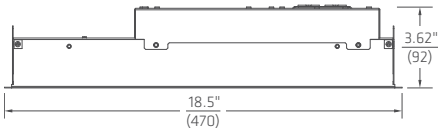
NOTES



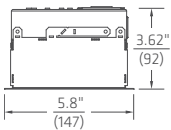
CROSS SECTION



DIMENSIONS



SIDE VIEW



FRONT VIEW

PERFORMANCE SUMMARY

| | A | B |
|---|---------|------|
| Light (lm) | 1550 | 1900 |
| Energy (W) | 12 | 15 |
| Efficacy (lm/W) | 132 | 130 |
| Color Rendering (CRI) | 80+ | |
| Color Accuracy (SDCM) | < 2 | |
| L70 Estimate (h) | 150,000 | |
| Lumen Maintenance per TM21 (@ 54,000 h) | L88 | |

Summary values are nominal and based on 4000K CCT.

FEATURES

- Fluxwerx radial Anidolic optics provide a precisely controlled 360° symmetrical batwing distribution with no view of the LED point source.
- Complete family of recessed configurations for a multitude of applications and spaces: 1x1, 1x2, 1x4, 2x2, 2x4, plus 6"x1, 6"x1.5, 6"x2 and 6"x4.
- Companion Loop Suspended family allows for an aesthetically connected design language.
- Suitable for T-Bar or Drywall ceilings with a Trim or Trimless Flange. 6" wide versions are compatible with TechZone™ and USG Logix™ ceiling systems.
- The light distribution and high efficacies combine to allow wide fixture spacing with ample general illumination at energy densities less than 0.4 W/ft².



SPECIFICATION DATA

LOOP RECESSED 6"x1.5 (LR1-65)

ORDER GUIDE

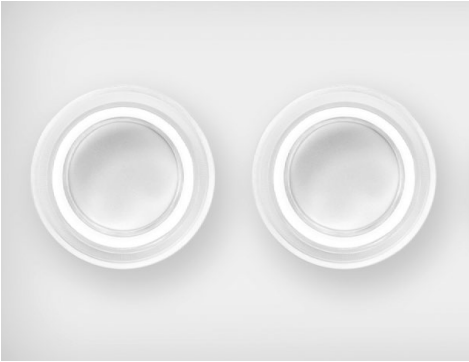
| 1 | 2 | 3 | 4 | 5 | 6 | OPTIONS | CONTROLS |
|------------|-----------|---|---|---|---|---------|----------|
| LR1 | 65 | | | | | | |

| 1 | FAMILY | 2 | SIZE | 3 | ENERGY ¹ | 4 | CCT | 5 | DRIVER |
|-----|---------------|-----|--------------------|---|---------------------|---|-------------------------------------|---|--------|
| LR1 | Loop Recessed | 61 | 6" x 1' (2 loop) | A | 9.5 W | | 30 3000 K 35 3500 K 40 4000 K | F1 Non-Dim F2 0-10 V Dim 3% E1 eldoLED ECO 0-10 V Dim 1% E2 eldoLED SOLO 0-10 V Dim 0.1% E3 eldoLED ECO DALI Dim 1% E4 eldoLED SOLO DALI Dim 0.1% L1 Lutron Hi-Lume 1% EcoSystem (LDE1) | |
| | | ▶65 | 6" x 1.5' (3 loop) | A | 12 W | | | | |
| | | | | B | 15 W | | | | |
| | | 11 | 1' x 1' | A | 12 W | | | | |
| | | 62 | 6" x 2' | B | 15 W | | | | |
| | | 12 | 1' x 2' | C | 19 W | | | | |
| | | 22 | 2' x 2' | A | 19 W | | | | |
| | | 64 | 6" x 4' | B | 23 W | | | | |
| | | 14 | 1' x 4' | C | 29 W | | | | |
| | | 24 | 2' x 4' | D | 38 W | | | | |
| | | | | ¹ Nominal input power. Add 4 W for 347 V with E1-4/L1. | | | | | |

| 6 VOLTAGE | OPTIONS ³ | CONTROLS |
|--|---|---|
| M 120-277 V 3 347 V ² | B Battery Pack C Chicago Plenum F 6' Flex Whip H Emergency Switching (GTD or Controller) K2 Drywall Flange Kit - Trimless ⁴ | RE1 Remote Enlighted Smart Sensor ⁵ VN1 Acuity nLight Converter |
| ² 347 V Driver for F1/F2, 347 V Transformer & Driver for E1-4/L1. | ³ BP & GTD available for 120-277 V. ⁴ Trim Flange Kit supplied as standard. | ⁵ In 6"x1 and 6"x1.5 sizes, no Enlighted sensor with GTD or 347 V. |

SPECIFICATION DATA
LOOP RECESSED 6"x1.5 (LR1-65)

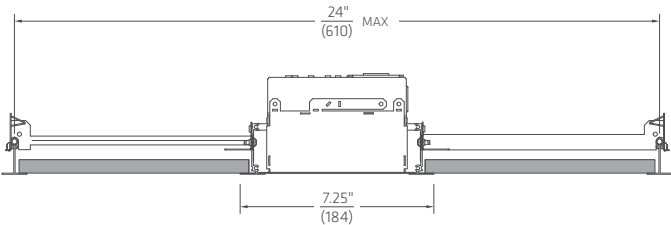
PRODUCT DETAILS



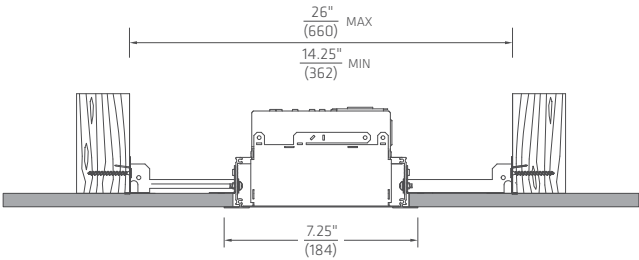
RADIAL ANIDOLIC OPTIC

CEILING INTEGRATION

GRID

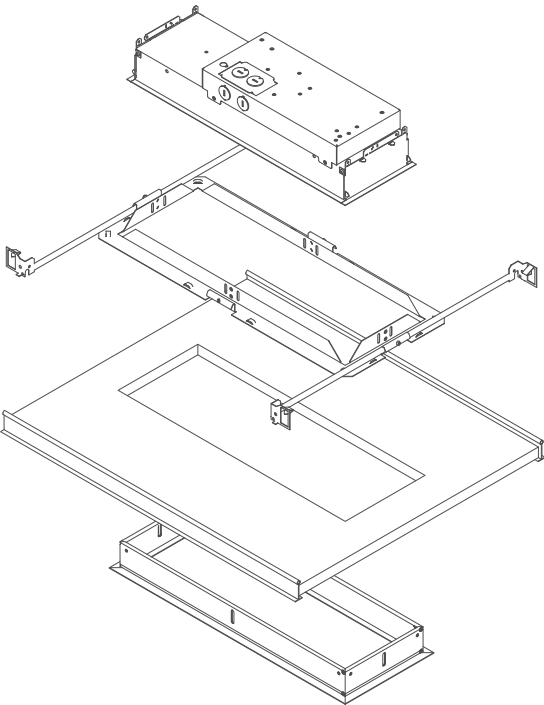


DRYWALL



Trim or Trimless (mud-in) Flange Kit

GRID



Required Aperture: 6.5"x18.5"
(165 x 470)

SPECIFICATION DATA
LOOP RECESSED 6"x1.5 (LR1-65)

NOTES

CONSTRUCTION

- Formed 22 ga. steel housing
- Quick wire access plate and integral seismic restraint tabs/tie-offs
- Supplied drywall trim flange kit or optional trimless (mud-in) flange kit
- High reflectance diffuse white textured powdercoat

OPTICAL

- Radial Anidolic optical structures with detailed light extraction elements for 360° symmetric batwing distribution
- Precision molded high transmittance clear acrylic lenses
- Long life LED system designed for typical TM21 lumen maintenance \geq L90 @ 54,000 h
- Available in CCTs 3000 K, 3500 K or 4000 K with CRI \geq 80 and R9 \geq 0, all with color accurate binning \leq 2 SDCM

ELECTRICAL

- Integral high efficiency drivers for 50–60 Hz, 120–277 V or 347 V
- Power Factor > 0.90
- Total Harmonic Distortion $< 20\%$
- Dim level: Standard 3%, optional 1% or 0.1%
- Optional Battery Pack delivers 10 W Class 2 rated output for 90 min. Use 12 W input energy to estimate emergency flux, typically 1150–1750 lm (@100–150 lm/W).
- Optional GTD (Generator Transfer Switch), 120–277 V, disables 0–10 V control during emergency for full light output
- Optional flex whip: 6' prewired
- Surge Protection: Meets ANSI C82.11 spec and ANSI/IEEE C62.41
- Inrush Current: Meets NEMA 410

ENVIRONMENTAL & CARE

- Designed for use in dry or damp indoor locations with ambient temperatures of 0–30° C (32–86° F)
- Not suitable for natatorium environments, e.g. swimming pools, hot tubs and saunas. The luminaire may be damaged by chemicals such as chlorine, solvents, ammonia, alcohol or sulfur in the area of operation or in cleaning products. Damage from contaminants is not covered under warranty.
- Clean only by wiping with a slightly water-damp, soft, clean cloth.

WEIGHT

- Maximum 9.9 lbs (4.5 kg) with standard driver
- Maximum 11.7 lb (5.3 kg) with battery pack or 347 V transformer

WARRANTY

- 5 year limited warranty on all components and workmanship

INDEPENDENT TESTING

- IESNA LM79
- IESNA LM80 (LED @ 9,000 or 10,000 h)

APPROVALS

- UL Listed (USA + Canada)
- CCEA Chicago Plenum
- IC Rated
- Lighting Facts®
- DesignLights Consortium®
Most options DLC qualified, please check catalog number in the QPL list (www.designlights.org/QPL)

CONTROLS & SENSORS

Fluxwerx products are designed for simple integration with a wide range of sensors, lighting controls and building management systems. Many projects incorporate occupancy sensing, daylight harvesting, individual or central adjustment of light levels and luminaire or space monitoring in order to save energy, reduce costs and maximize occupant comfort. Fluxwerx offers a number of standard driver and controller options to support various wired and wireless network protocols.

enlighted™

Enlighted wireless, networked smart sensor integrates occupancy sensing, daylight harvesting, energy usage, temperature and light level control. Option: Remote Enlighted sensor (RE1), Model: SU-5E-CL

nLIGHT

nLight wired, 2-way network supports luminaire light level control as well as occupancy and daylight sensors. Option: Acuity nLight Converter (VN1), Model: nPS-80-EZ or nPS-80-EZ-ER

eldoLED®

EldoLED drivers support common wired protocols, 0–10 V and DALI. They also provide access to finer dimming control, dynamic white and Bluetooth low-energy (BLE) wireless. Options: ECO 1% (E1), SOLO 0.1% (E2)

LUTRON®

Lutron EcoSystem network protocol enables on/off, dimming, occupancy sensing and daylight harvesting. Option: Hi-Lume 1% EcoSystem (L1), Model: LDE1

legrand® Wattstopper® Pass & Seymour

LEVITON® EATON®

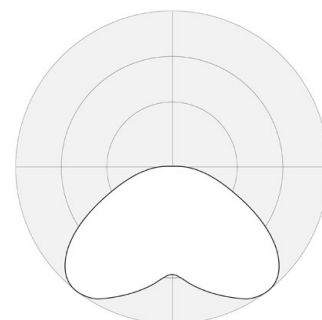
DISTECH
CONTROLS™

CRESTRON®

SPECIFICATION DATA
LOOP RECESSED 6"x1.5 (LR1-65)

PERFORMANCE DATA

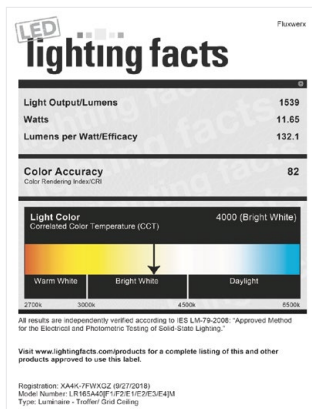
| A 12 W | CCT | LIGHT (lm) | ENERGY (W) | EFFICACY (lm/W) | (CRI) | COLOR ACCURACY (R9) | (SDCM) |
|---|--------|---------------|---------------|--------------------|-------|------------------------|--------|
| VERSION LR1-65A40 REPORT 12509649.04 | 4000 K | 1539 | 11.65 | 132.1 | 82.7 | 7.4 | < 2 |
| | 3500 K | 1509 | 11.65 | 129.5 | 82.7 | 7.4 | |
| | 3000 K | 1478 | 11.93 | 123.9 | 82.6 | 4.8 | |
| B 15 W | CCT | LIGHT (lm) | ENERGY (W) | EFFICACY (lm/W) | (CRI) | COLOR ACCURACY (R9) | (SDCM) |
| VERSION LR1-65B40 REPORT 12509649.08 | 4000 K | 1915 | 14.79 | 129.5 | 82.6 | 6.9 | < 2 |
| | 3500 K | 1869 | 14.79 | 126.3 | 82.6 | 6.9 | |
| | 3000 K | 1822 | 15.05 | 121.1 | 82.5 | 4.3 | |



100% Dn
Loop Recessed
6" x 1.5'
4000 K

Integrating Sphere and Photometric results at 3000K and 4000K by an independent accredited testing laboratory per IES LM-79-2008 and ANSI C78.377-2011. Results for 3500K scaled based on integrating sphere results at 15W (B). Candlepower Distribution scaled per total lumens of Integrating Sphere results.

LR1-65A40



LR1-65B40

