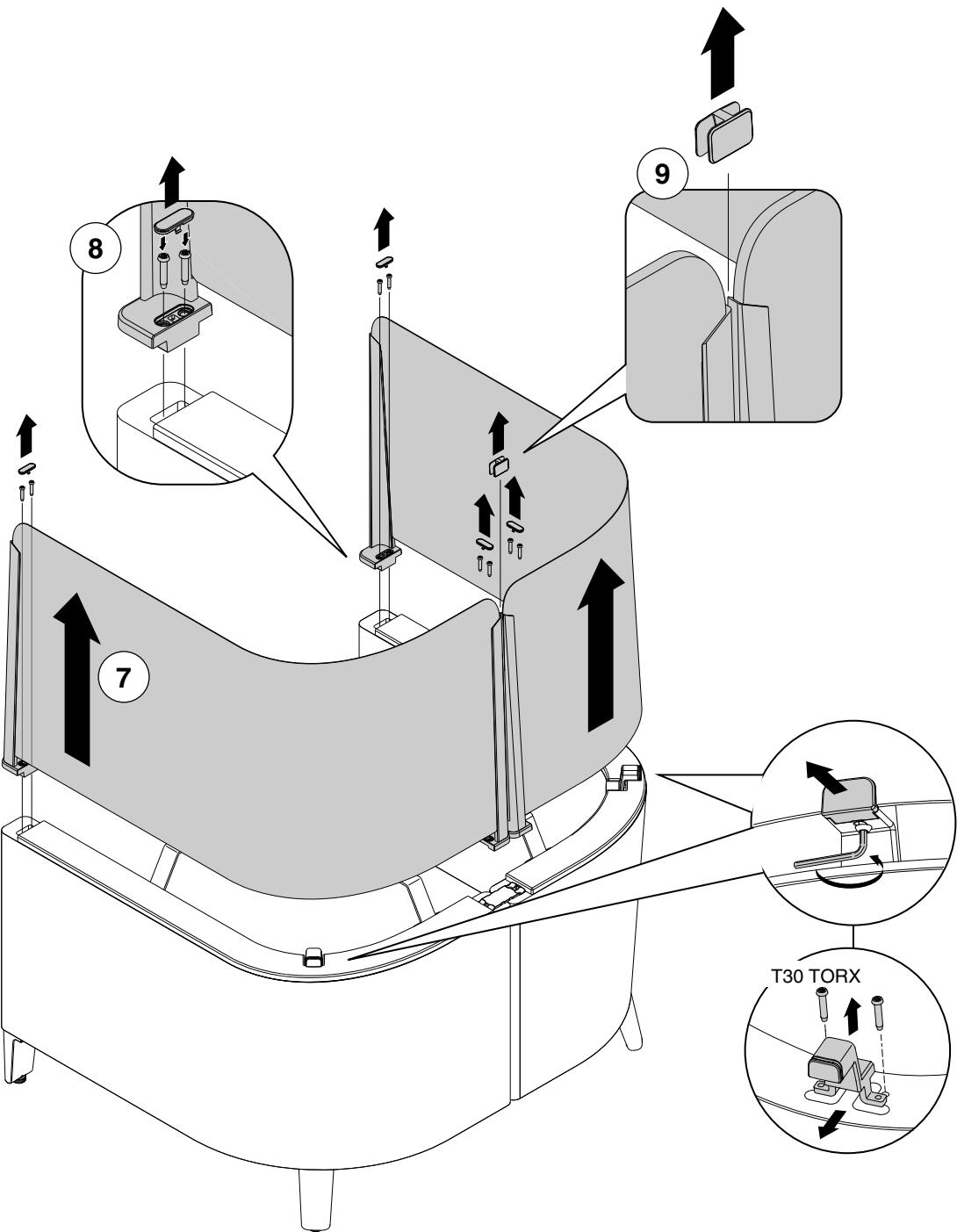


SCREEN DISASSEMBLY

- 1. Pry top caps off and discard.
- 2. Remove all screws from the screen bases (T30 TORX + 12" BIT HOLDER). Loosen middle brackets (3mm HEX) if needed.
- 3. Lift the screens from the base. Set aside.
- 4. Remove the (2) screws (T30 TORX) from the middle brackets and discard.

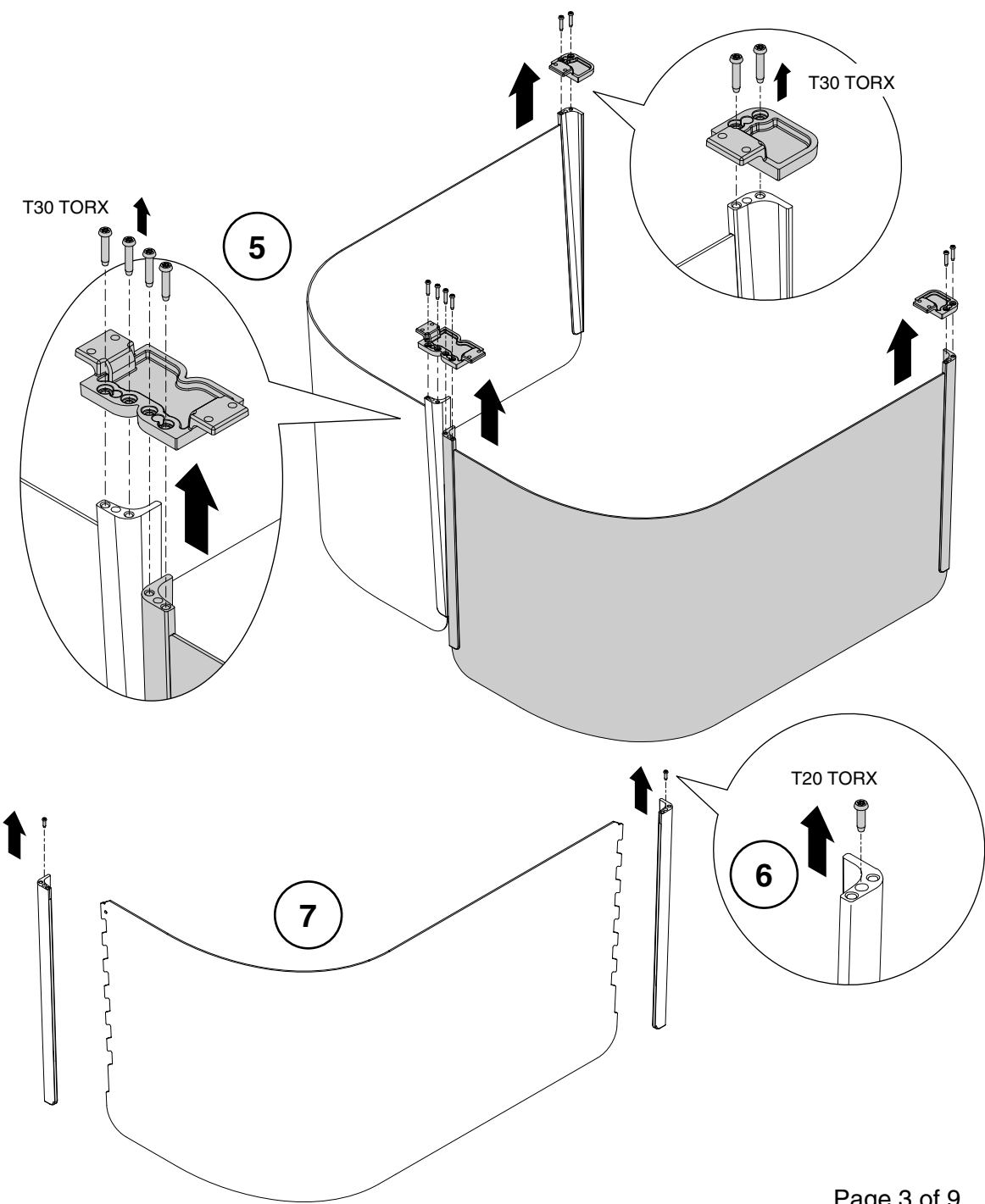


Bins for components removed

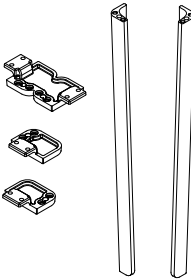
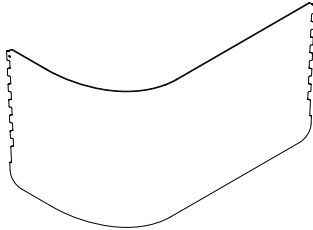

ALUMINUM	STEEL	SCRAP
	 (all)	

SCREEN DISASSEMBLY (continued)

- 5. Remove all attaching screws (T30 TORX) from the mounting plates and discard.
- 6. If screen(s) are fabric-covered, refer to Page 5. Remove screws (T20 TORX) from the bottom of screen uprights. Disengage the uprights from the screen hooks and discard.
- 7. Discard screen(s).

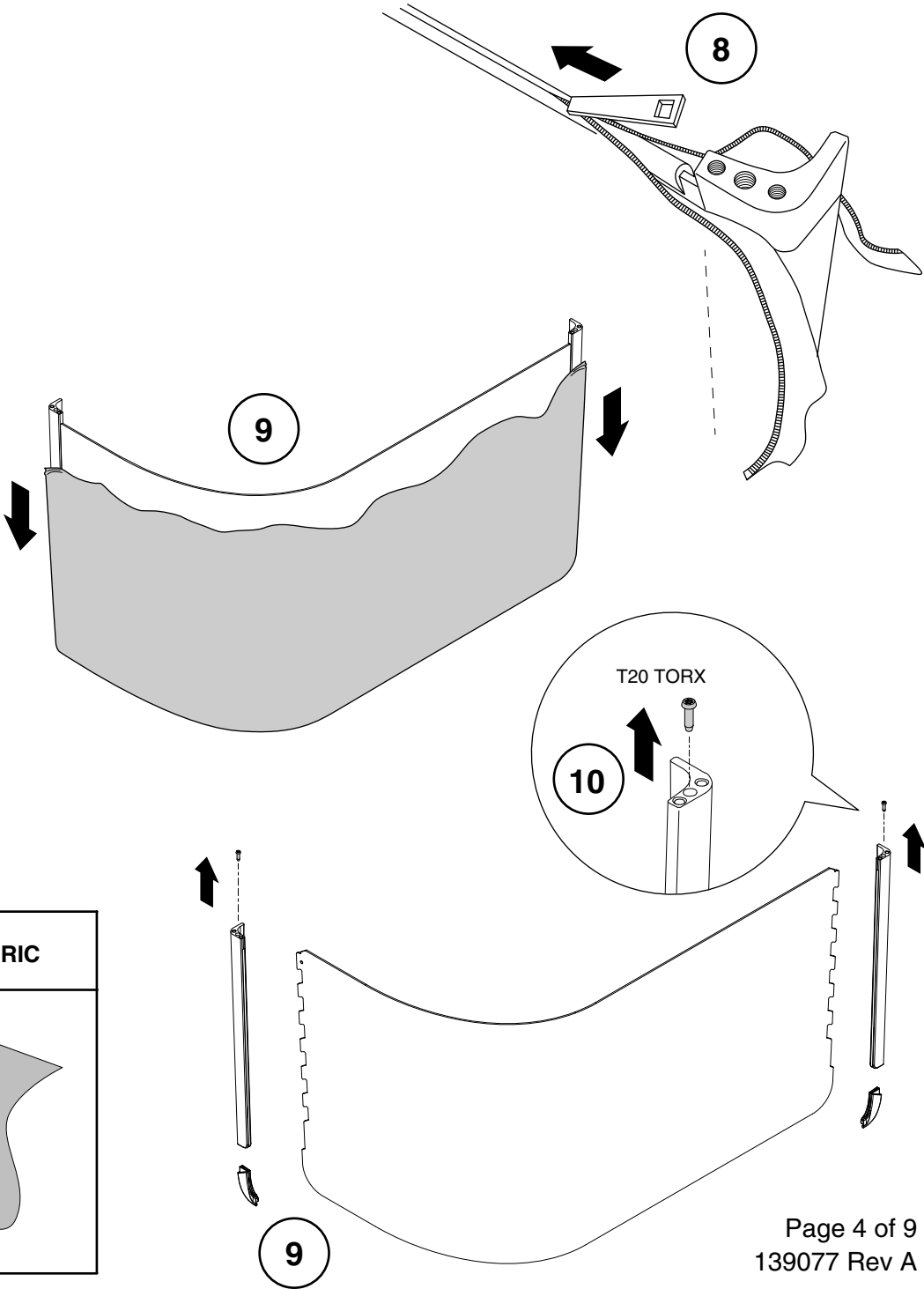


Bins for components removed

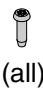
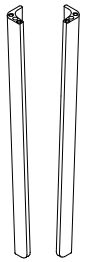

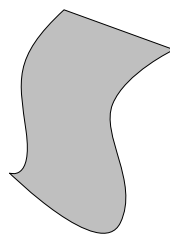
ALUMINUM	ACRYLIC*	STEEL
	 *see page 5 if fabric-covered	 (all)

FABRIC-COVERED SCREEN DISASSEMBLY

- 8. Locate zipper on the bottom of the fabric sock. Unzip the entire length.
- 9. Peel fabric sock off of steel screen substrate and remove both top corner pieces. Discard fabric and corner pieces.
- 10. Remove screws (T20 TORX) from the bottom of screen uprights. Disengage the uprights from the screen hooks and discard.
- 11. Discard screen(s).

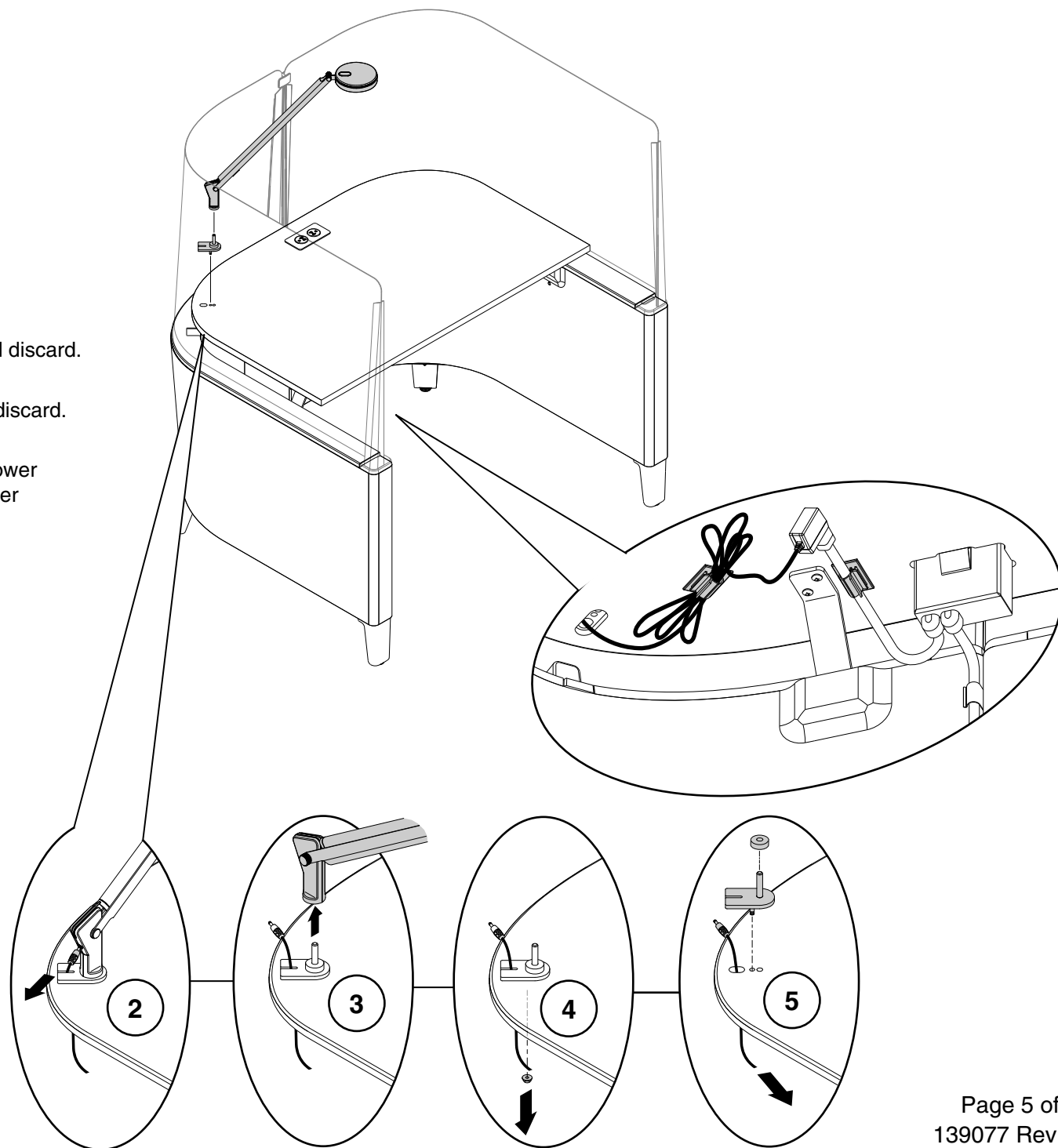


Bins for components removed

STEEL	ALUMINUM	ABS	FABRIC
 (all)			

LIGHTING DISASSEMBLY

1. Unplug light power cord.
2. Unplug power cord from light fixture.
3. Lift up to remove light fixture from base and discard.
4. Unscrew nut (8mm socket) from base and discard.
5. Remove base from worksurface and pull power cord through the hole. Remove foam washer and discard base and washer.

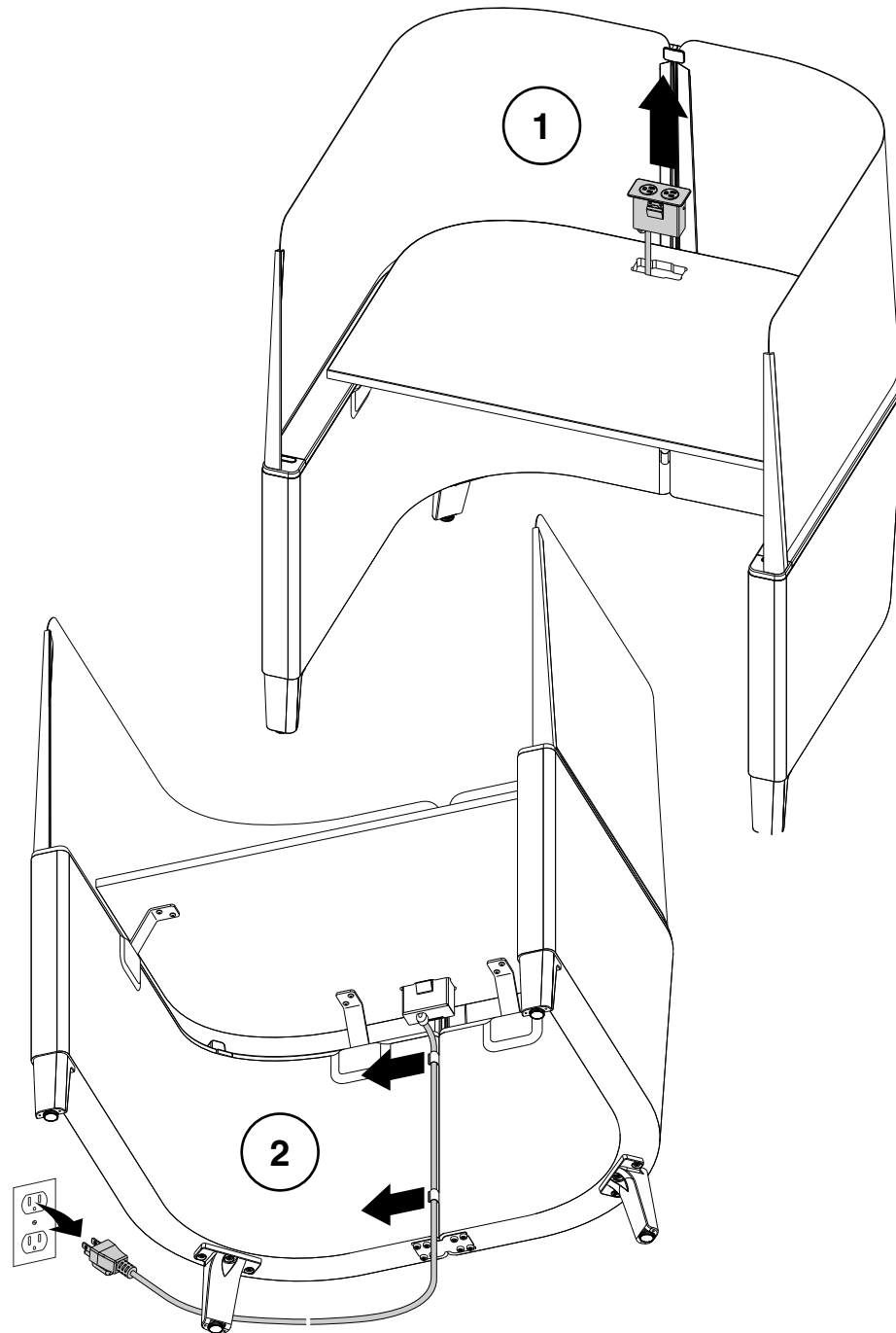


Bins for components removed

STEEL	SCRAP

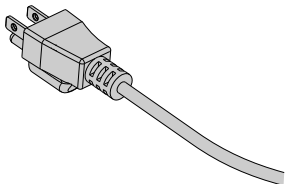
POWER MODULE DISASSEMBLY

1. Use a flathead screwdriver to remove the power module.
2. Remove the wire from wire clips.



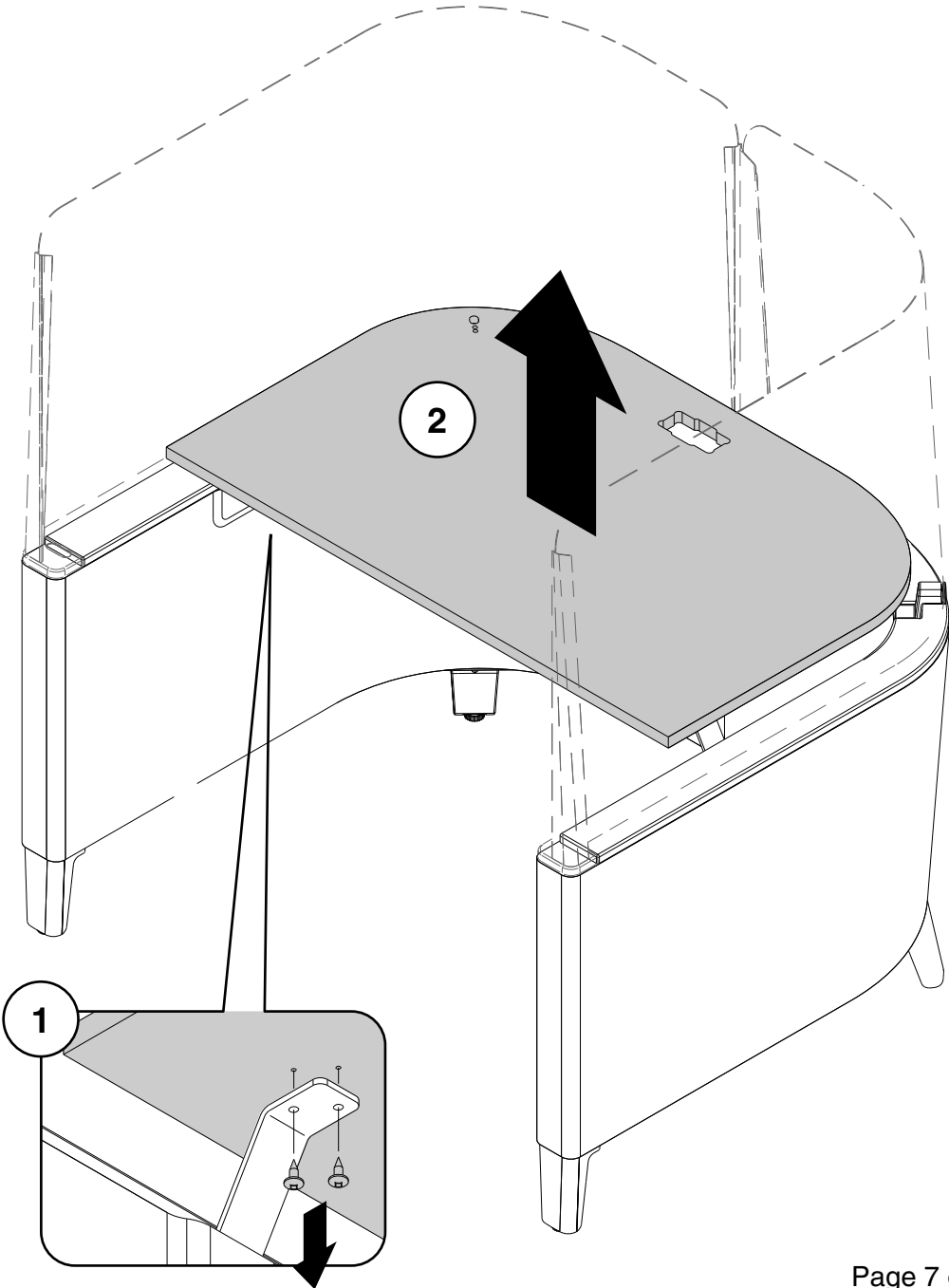
Bins for components removed

SCRAP

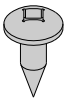
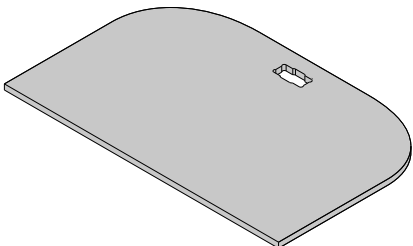


WORKSURFACE DISASSEMBLY

- 1. Remove all the screws from the underside of the worksurface.
- 2. Remove the worksurface and discard.

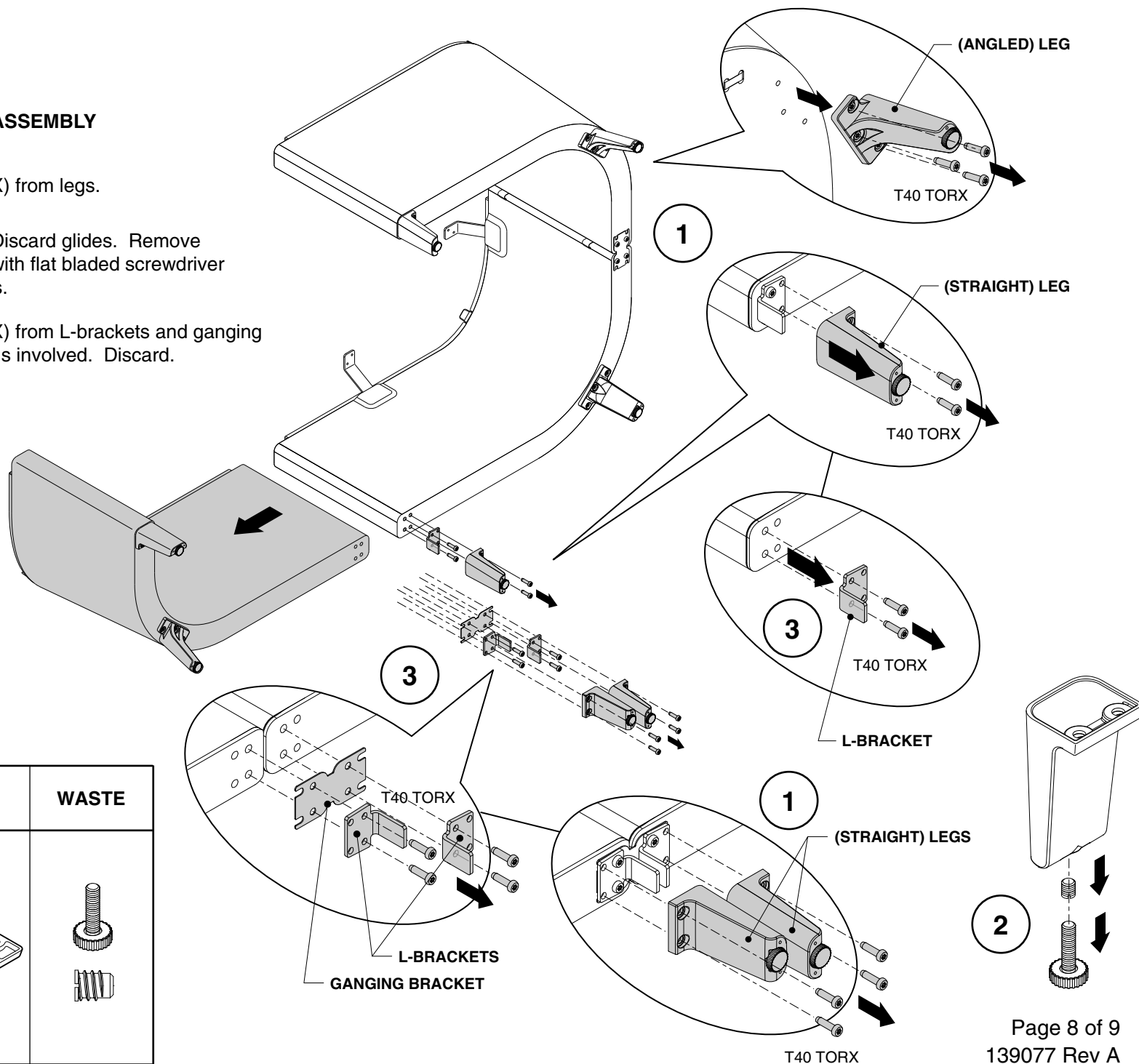


Bins for components removed

STEEL	SCRAP
 (all)	

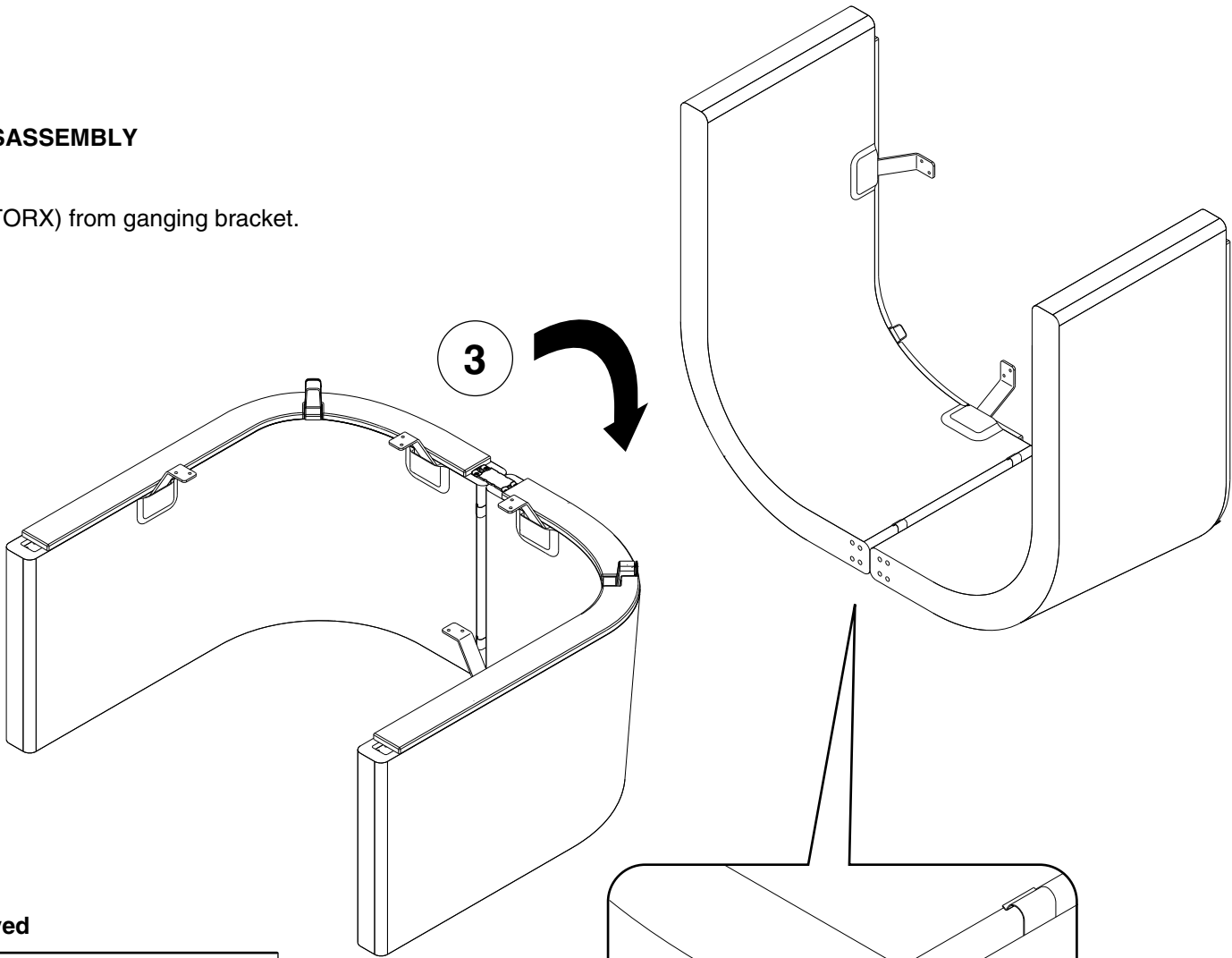
BASE AND EXTENSION DISASSEMBLY

1. Remove screws (T40 TORX) from legs.
2. Remove glides from legs. Discard glides. Remove threaded inserts from legs with flat bladed screwdriver and discard inserts and legs.
3. Remove screws (T40 TORX) from L-brackets and ganging bracket if an extension unit is involved. Discard.

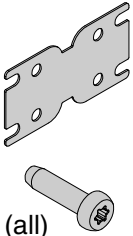
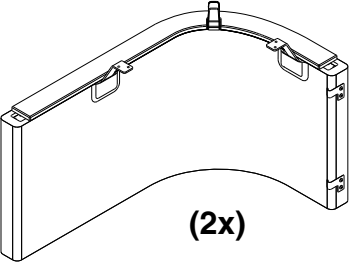


GANGING BRACKET DISASSEMBLY

1. Remove screws (T40 TORX) from ganging bracket.



Bins for components removed

STEEL	SCRAP
 <p>(all)</p>	 <p>(2x)</p>