

TOUCH LATCH INSTALLATION

1a. Drill (2) pilot holes at the dimensions shown in the underside of the top.

- or -

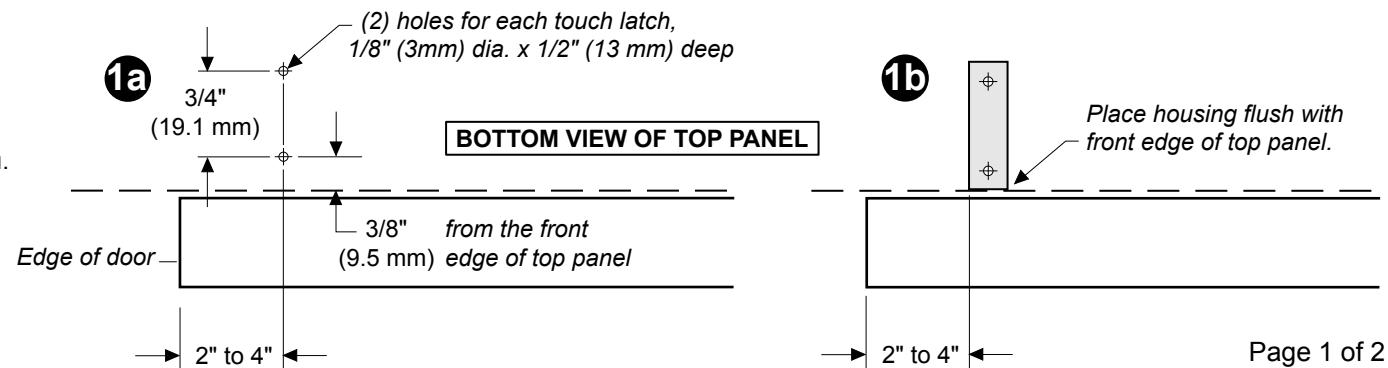
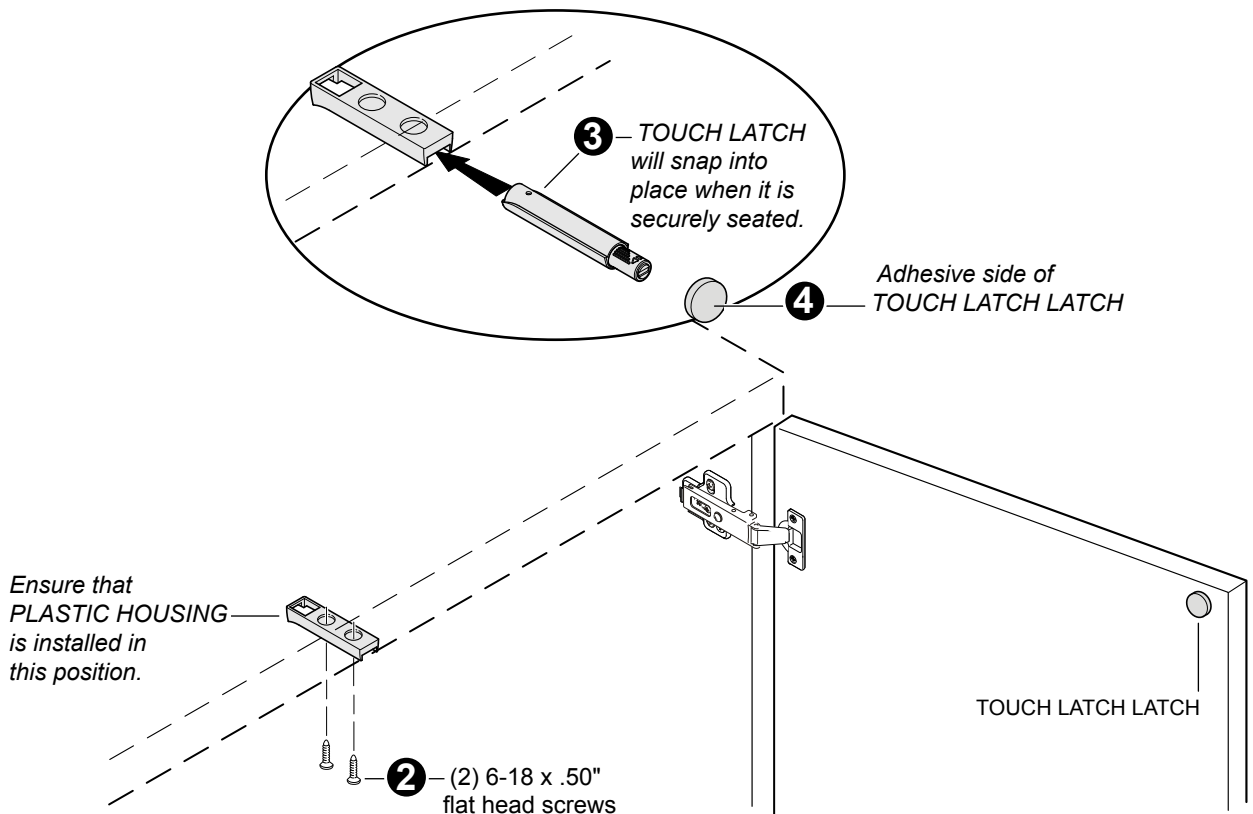
1b. Mark pilot hole locations by holding the edge of housing flush with front edge of top panel (within 4" of edge of door). Drill pilot holes.

2. Install the plastic housing with (2) screws provided.

3. Insert the touch latch *catch* into the plastic housing.

4. Peel the paper backing from the back of the touch latch *latch*, then place the magnetic part onto the touch latch *catch* with the adhesive side toward the door.

5. Carefully close the door so that the adhesive side of the latch sticks to the door. Open the door and press firmly on the latch so that it is securely fixed to the door.



If you have a problem, question, or request, call your local dealer, or Steelcase Line 1 at **888.STEELCASE** (888.783.3522) for immediate action by people who want to help you.

(Outside the U.S.A., Canada, Mexico, Puerto Rico, and the U.S. Virgin Islands, call: 1.616.247.2500) Or visit our website: www.steelcase.com

© 2008 Steelcase Inc.
Grand Rapids, MI 49501
U.S.A.

Printed in U.S.A.

TOUCH LATCH ADJUSTMENT

1. Touch latch may be adjusted in or out by turning with a flat blade screwdriver or with fingertips.

