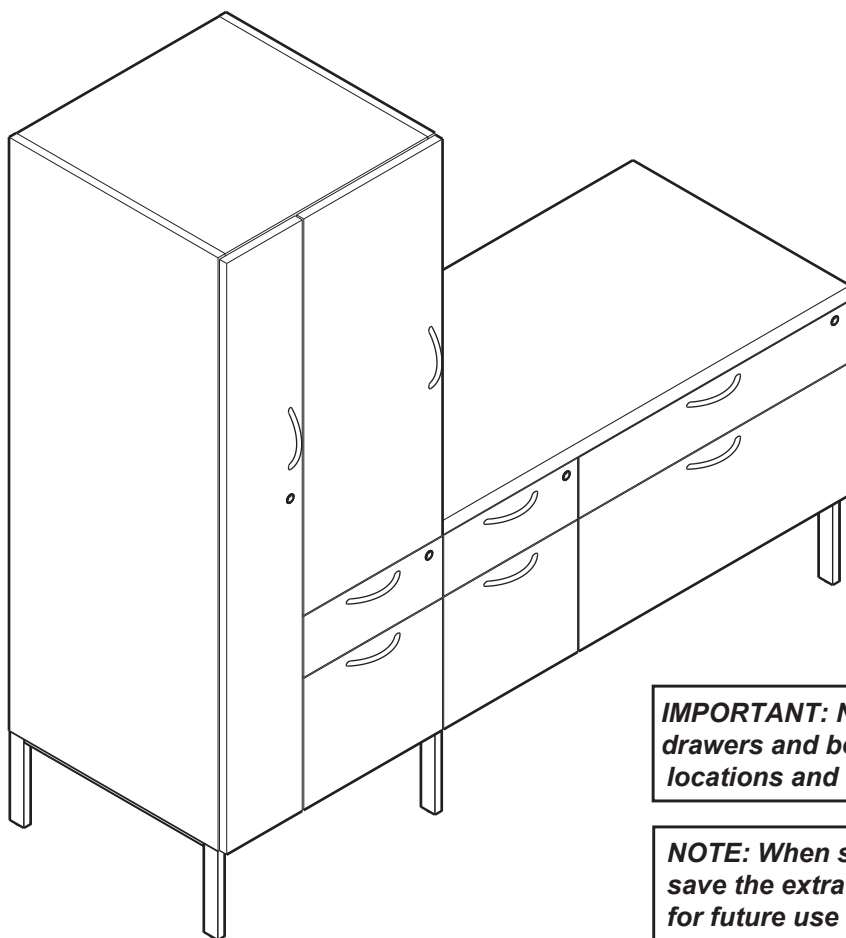


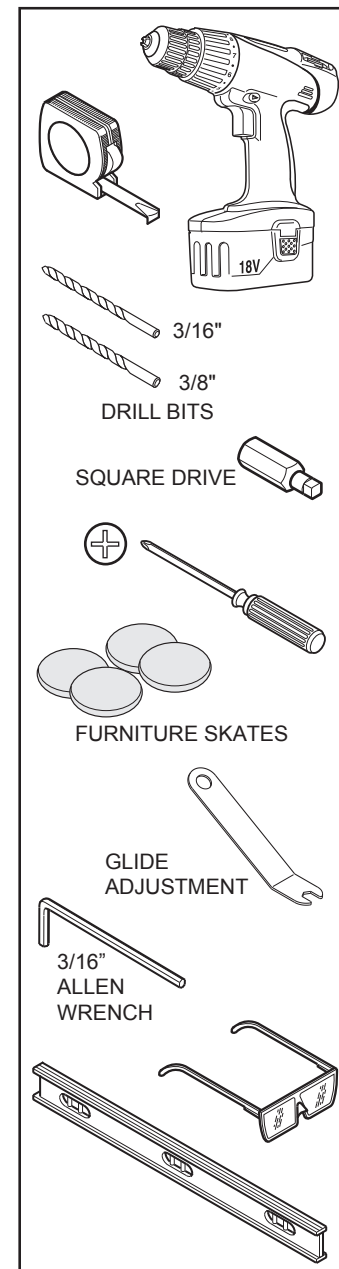
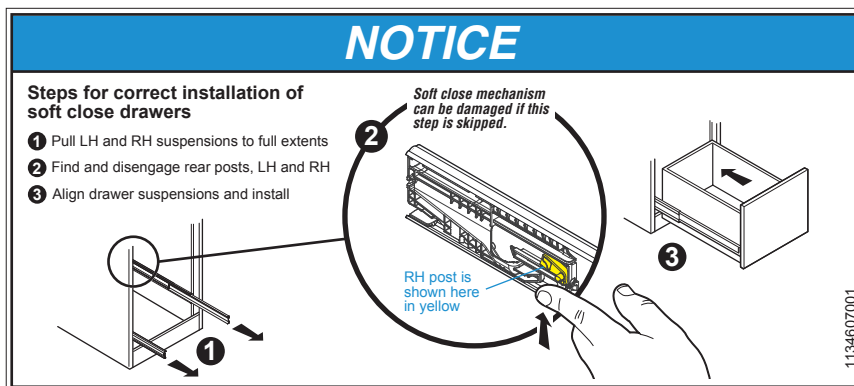
Elective Elements - Leg Base Credenza with Attached Tower



IMPORTANT: Note locations when removing drawers and be sure to reinstall them in the same locations and into the same cabinets.

NOTE: When storage legs are shared, be sure to save the extra storage legs at the customer site for future use (e.g. reconfigurations).

If you have a problem, question, or request, call your local dealer, or Steelcase Line 1 at 888.STEELCASE (888.783.3522) for immediate action by people who want to help you. (Outside the U.S.A., Canada, Mexico, Puerto Rico, and the U.S. Virgin Islands, call: 1.616.247.2500) Or visit our website: www.steelcase.com
© 2018 Steelcase Inc.
Grand Rapids, MI 49501
U.S.A.
Printed in U.S.A.

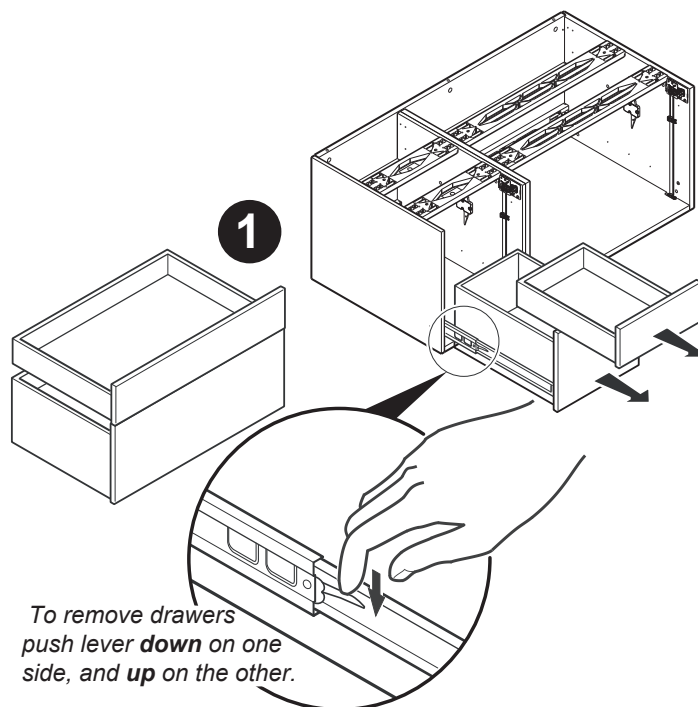


Prepare the Credenza

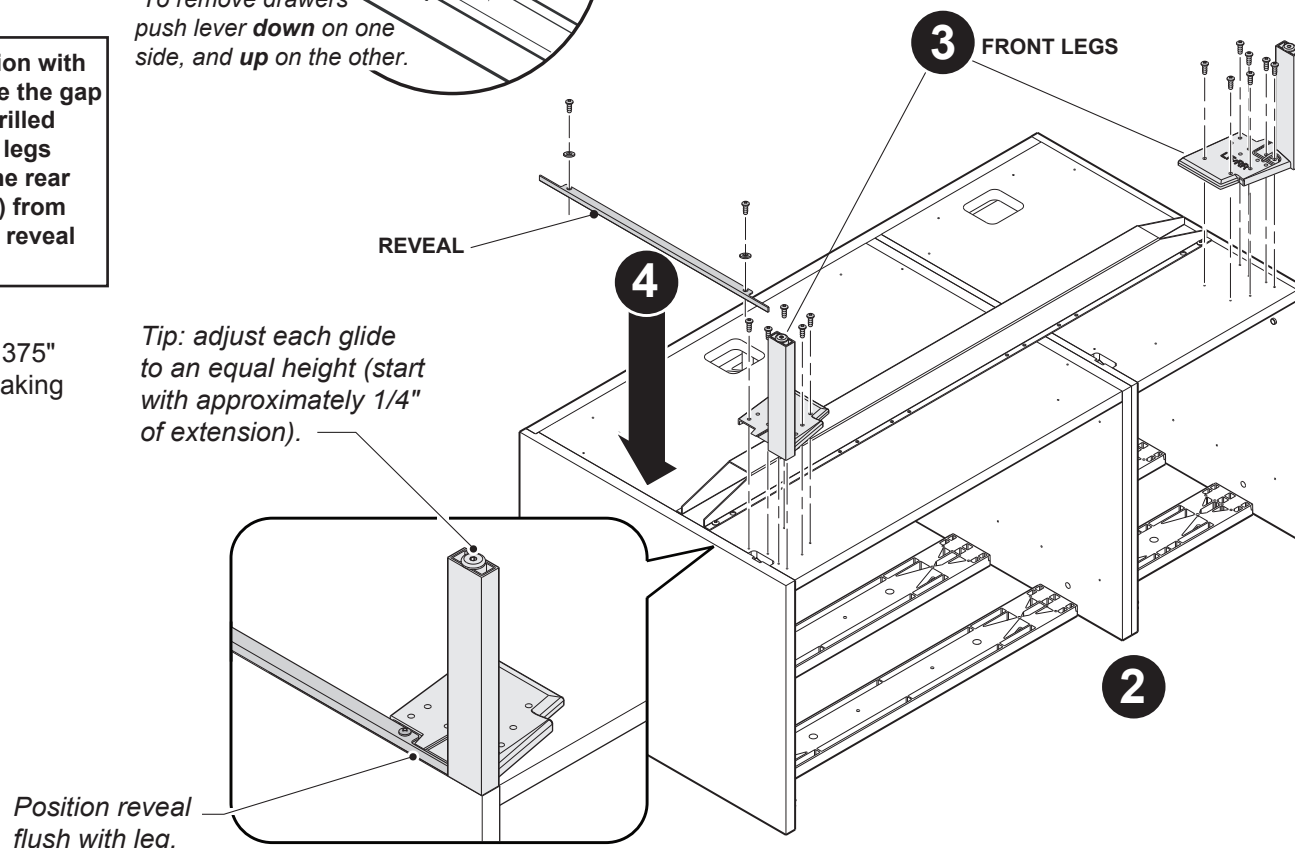
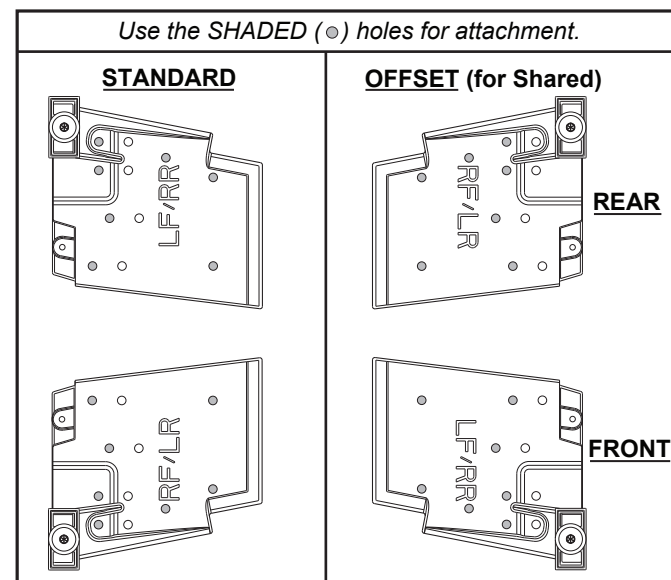
1. Remove drawers, doors, and shelves from credenza if there are any.
2. Carefully lay case on its top on a clean, soft surface.
3. Attach front legs using (7) #10 x 1.075" screws each leg, in predrilled holes.

NOTE: In a back-to-back condition with another storage unit, to minimize the gap between legs: **DO NOT** use predrilled holes to locate legs. Install rear legs first, by aligning them flush to the rear of the unit and inset .062" (1/16") from the side of the unit. Then install reveal and use it to locate front legs.

4. Attach reveal using 8-32 x .375" tri-lobe screws and washers, making sure it's flush to leg.



To remove drawers push lever **down** on one side, and **up** on the other.



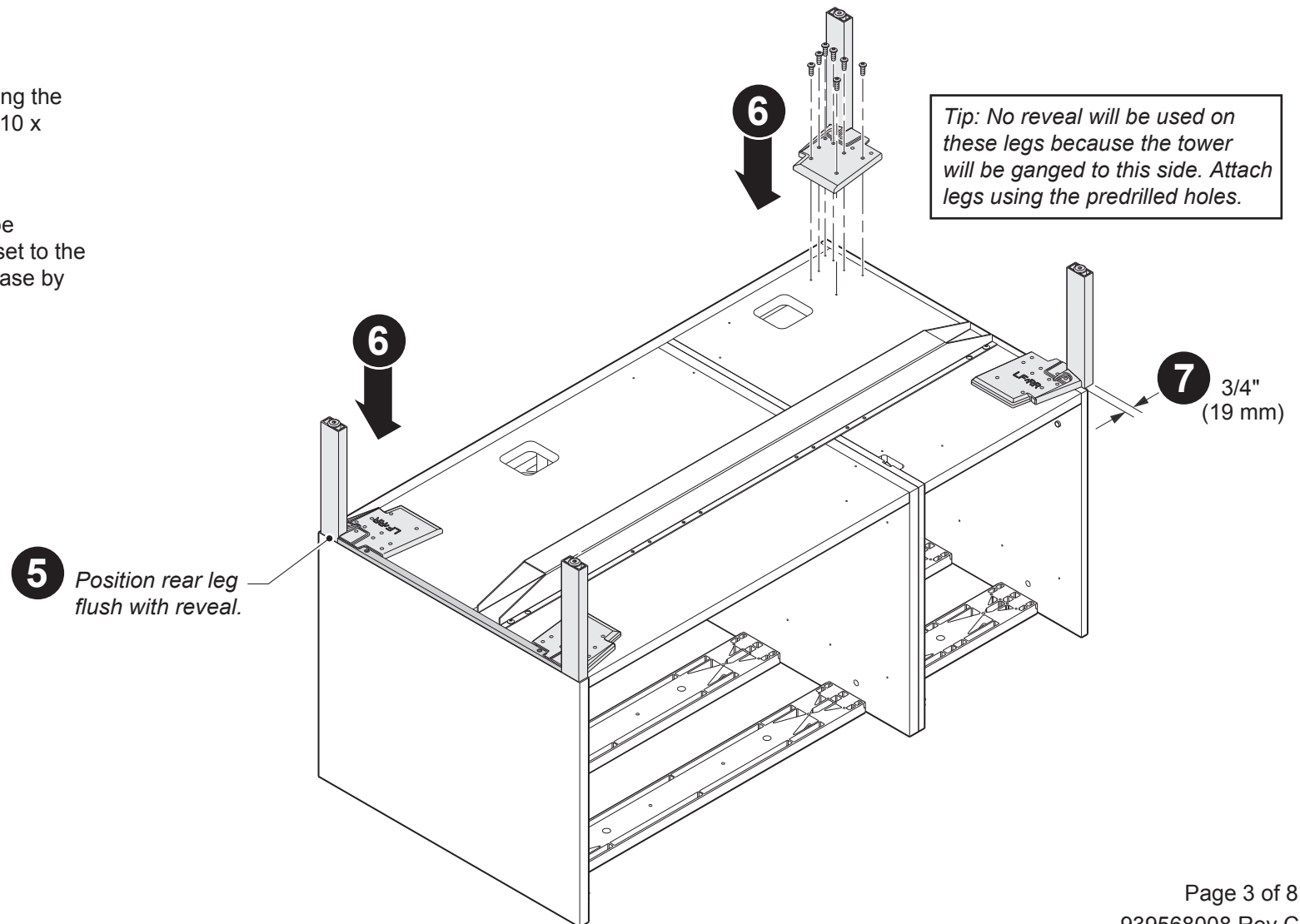
Tip: Make sure that the torque control drill is set properly to prevent stripping of screws.

Prepare the Credenza (continued)

5. Flush rear leg to reveal.

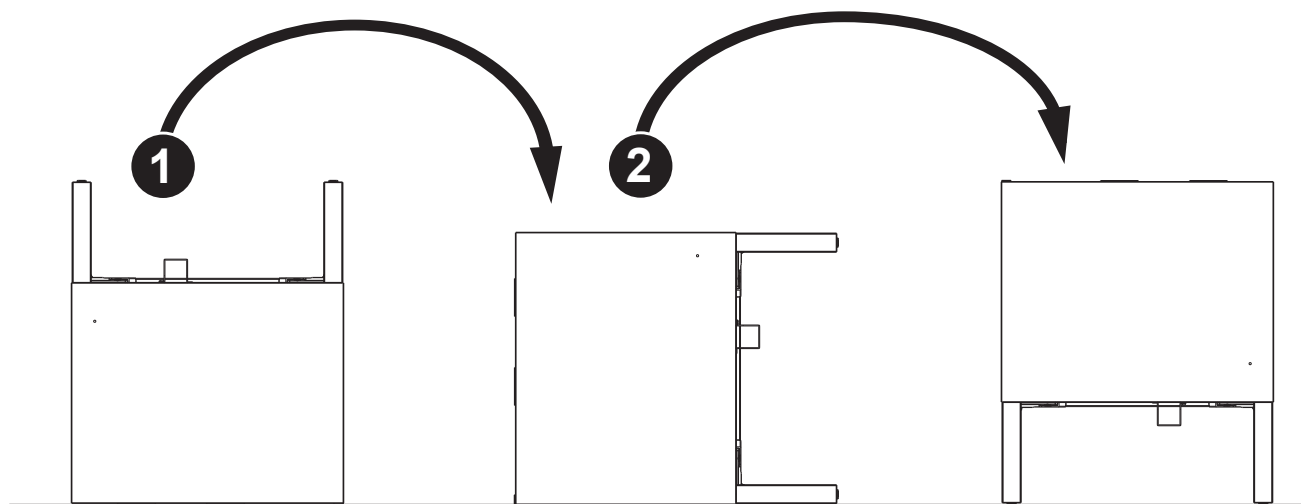
6. Attach rear legs to case using the predrilled holes and using (7) #10 x 1.075" screws for each leg.

7. On side where tower is to be attached, the legs are to be offset to the outside and will overhang the case by approximately $\frac{3}{4}$ ".



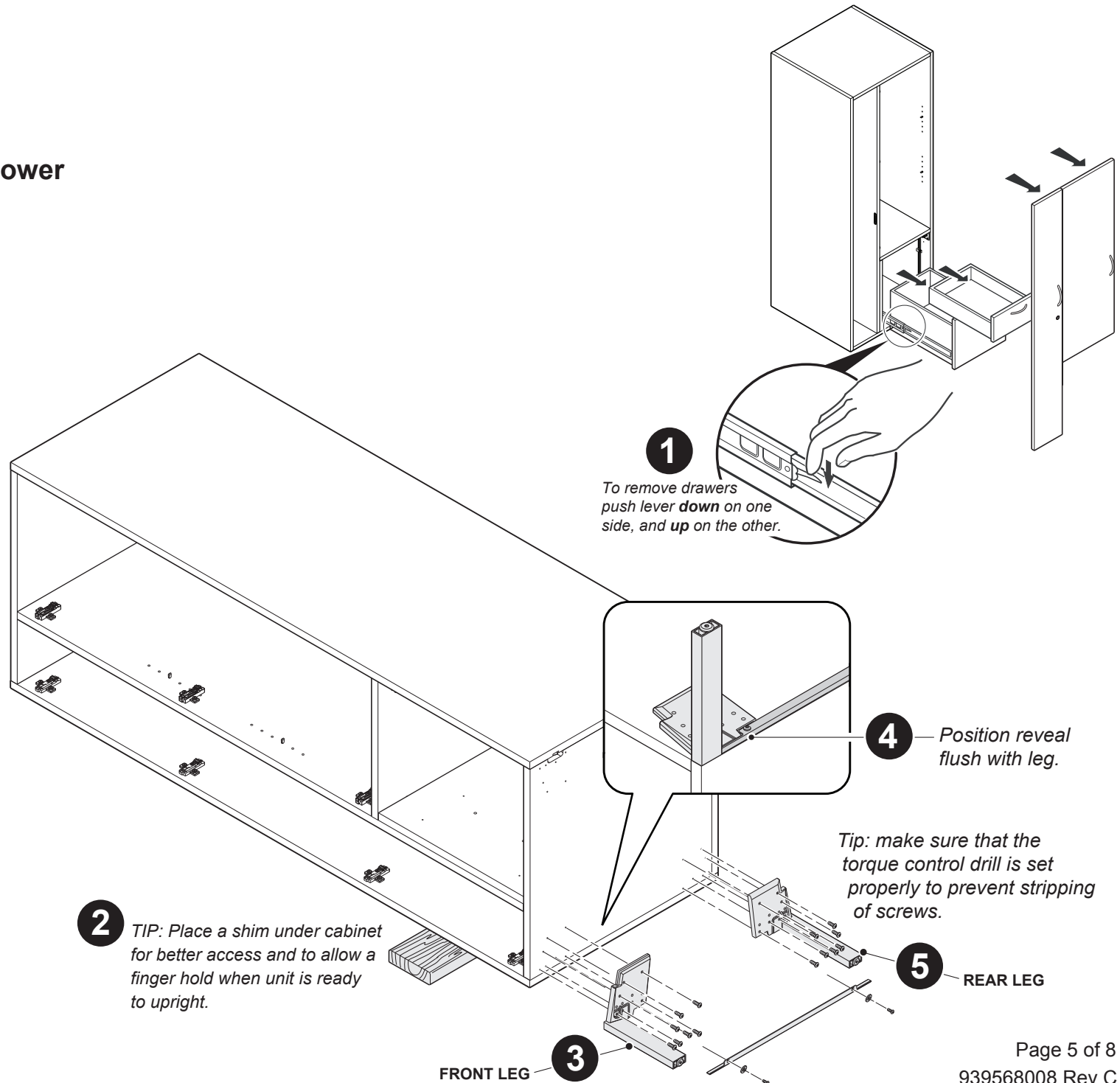
Tipping the Unit Upright

1. Tip unit from it's top onto it's back.
2. Carefully tip unit onto it's legs using the rear legs as a pivot.



Attaching Legs to the Tower

1. Remove any drawers, doors, and shelves where applicable.
2. Lay case onto it's side onto a clean, soft surface.
3. Attach front leg using (7) #10 x 1.075" screws in predrilled holes.
4. Attach reveal using 8-32 x .375" tri-lobe screws and washers, making sure it's flush to front leg.
5. Flush rear leg to reveal.
6. Attach rear leg to case using the predrilled holes and (7) #10 x 1.075" screws.



Tip Unit Upright and Attach to Credenza

1. Carefully rotate unit upright by pivoting on legs (*use two people*).

2. "Walk" or lift unit to credenza and set onto legs of credenza.

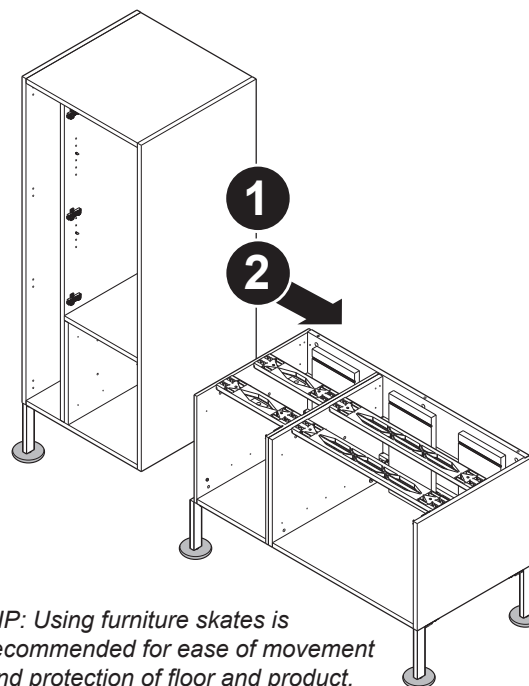
3. Align units and clamp together.

4. Drill through holes in credenza and into tower (*Tip: Use a wood backing block*).

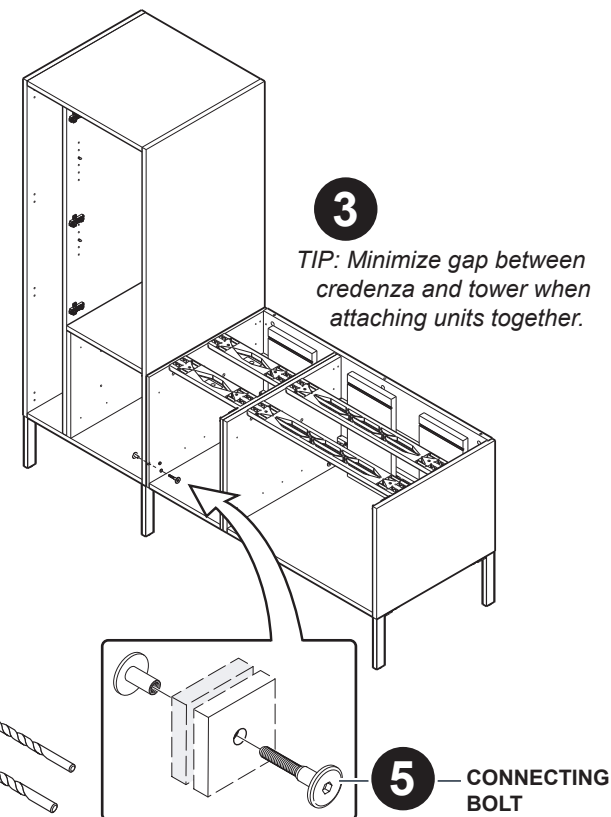
5. Attach cases by using (4) male-female connector bolts. **Make sure fasteners are fully seated to ensure proper clearance with interlock.**

6. Attach the top to the credenza using #10 x 1.45" screws. **Make sure that the top is properly aligned to the credenza and tower.**

(2) screws
per stretcher
1-1/4" pan head



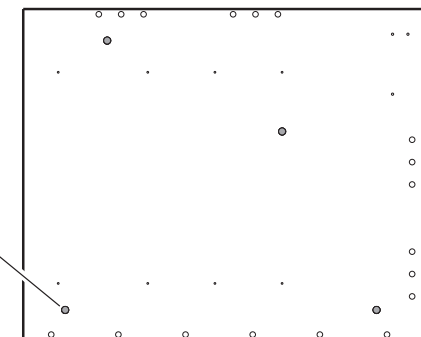
TIP: Using furniture skates is recommended for ease of movement and protection of floor and product. Remove when units are in final position.



4 *TIP: Use a 3/16" drill bit to start the holes, then a 3/8" bit to drill through both end panels. Use a wooden block on the exit side to prevent excess splintering.*

TIP: An open shelf unit will not use this hole.

Use the shaded holes when ganging units.



Complete Installation

1. If unit has drawers, attach counterweights with (2) #10 x 2.250" screws each.

2. Reinstall all drawers, doors, and shelves where applicable.
Confirm that the locks and interlocks function properly.

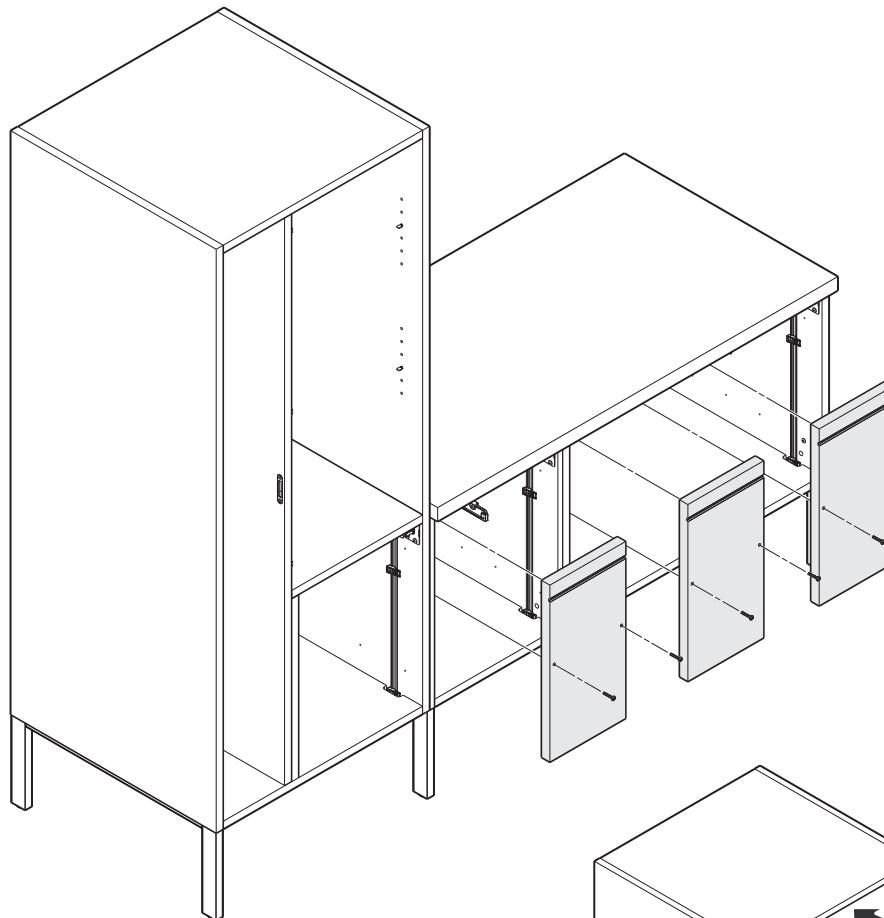
3. Check to see if units are level.

4. Slide glide cover up and use wrench to adjust glide.

5. After glide is adjusted slide glide cover back down.

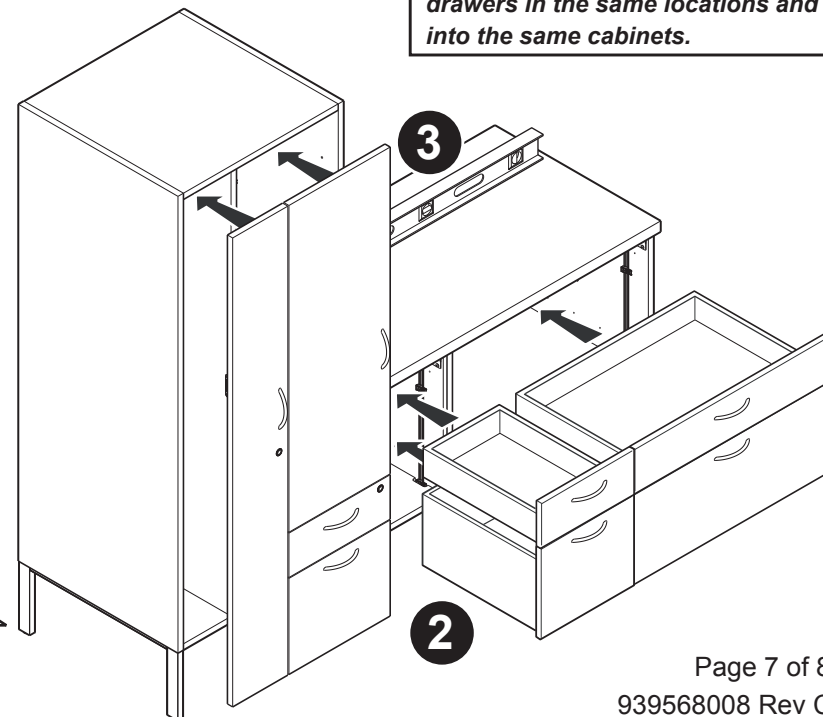
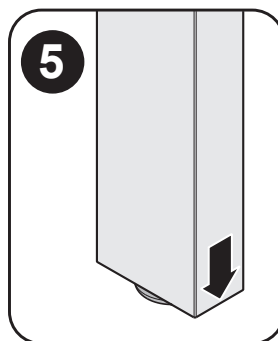
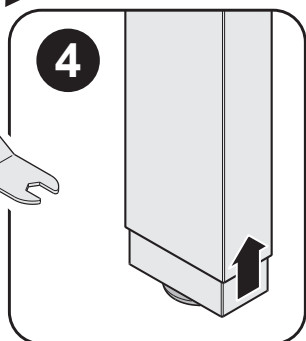
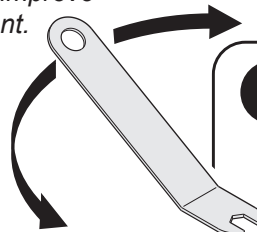
TIP: Glide adjustment may be necessary to improve headset alignment.

NOTE: Glide adjustment tool is available through Steelcase Service Parts (part number Y565727SR)



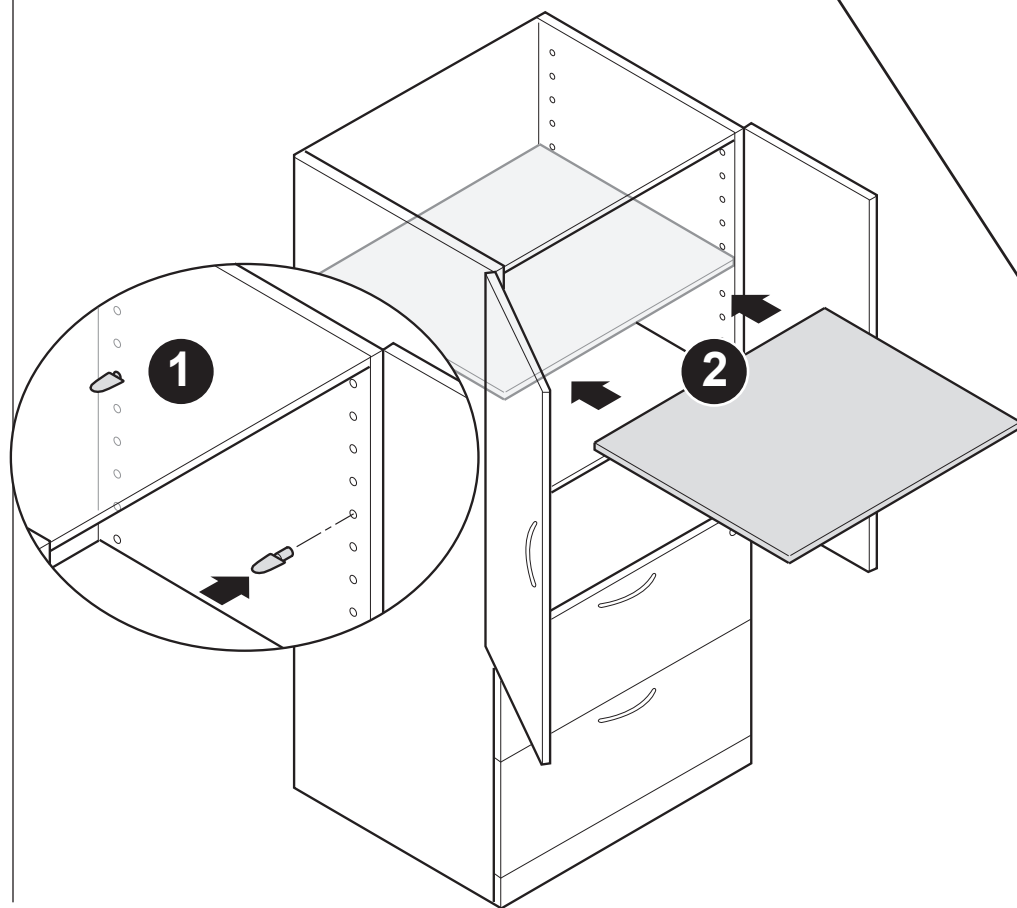
1 Tip: 30" and 36" wide components use (2) counterweights, 15" and 18" use (1).

IMPORTANT: Be sure to reinstall drawers in the same locations and into the same cabinets.



Adjustable Shelf Installation

1. Install (4) shelf pins as shown.
2. Lower shelf into place.



Hinge Adjustment

Adjust doors. A #2 screwdriver is recommended for adjusting hinge.

