

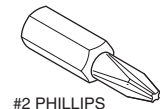
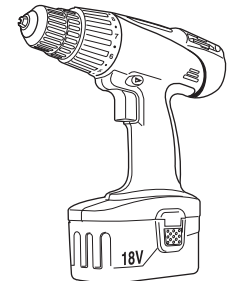
If you have a problem, question, or request, call your local dealer, or Steelcase Line 1 at **888.STEELCASE** (888.783.3522) for immediate action by people who want to help you.

(Outside the U.S.A., Canada, Mexico, Puerto Rico, and the U.S. Virgin Islands, call: 1.616.247.2500)

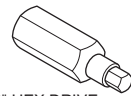
Or visit our website: www.steelcase.com

© 2014 Steelcase Inc.
Grand Rapids, MI 49501
U.S.A.

Printed in U.S.A.



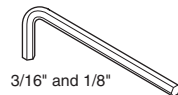
#2 PHILLIPS



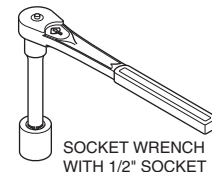
3/16" HEX DRIVE



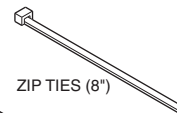
MAGNETIC
BIT HOLDER



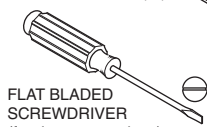
3/16" and 1/8"



SOCKET WRENCH
WITH 1/2" SOCKET



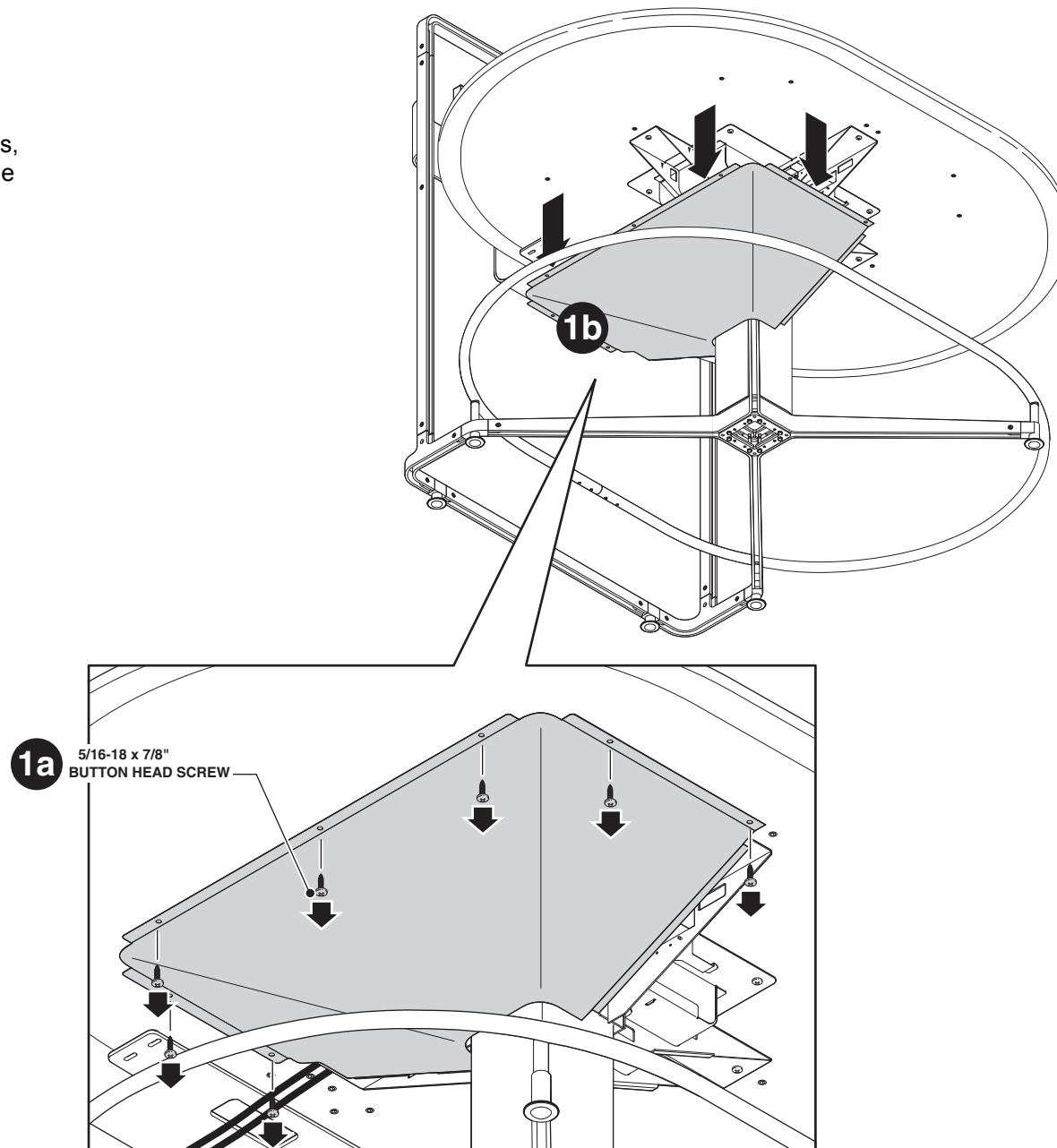
ZIP TIES (8")



FLAT BLADED
SCREWDRIVER
(for data connections)

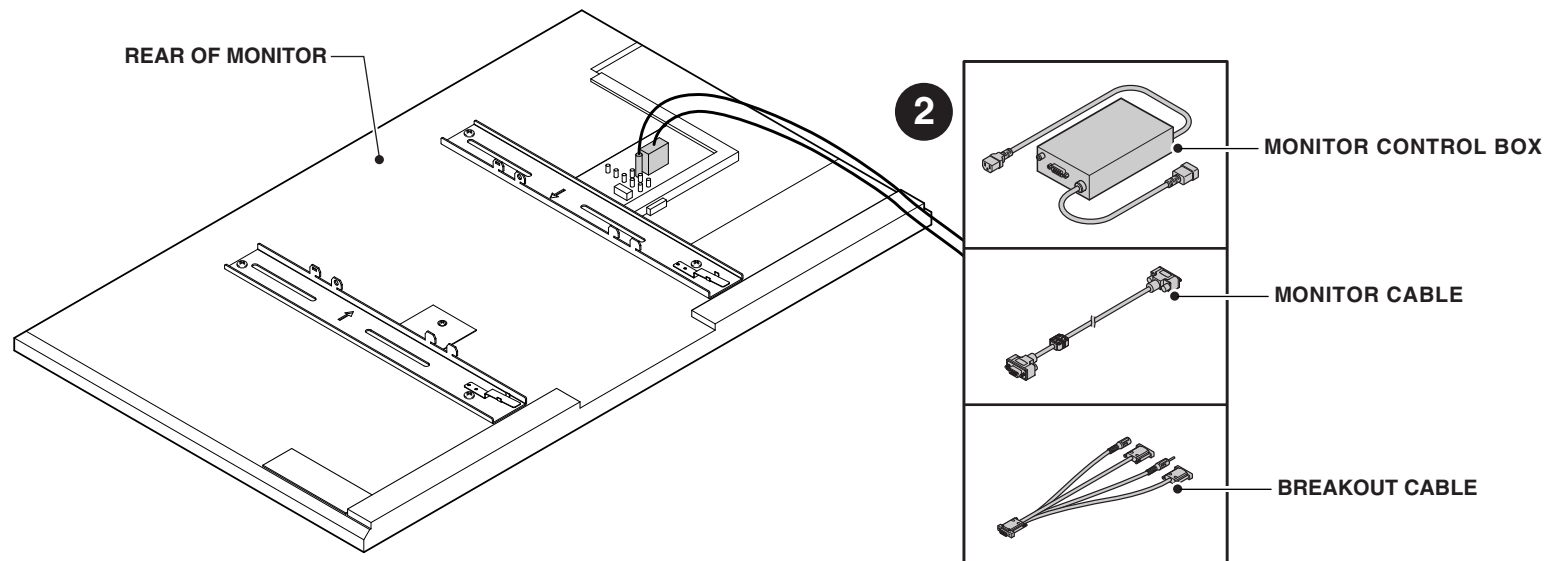
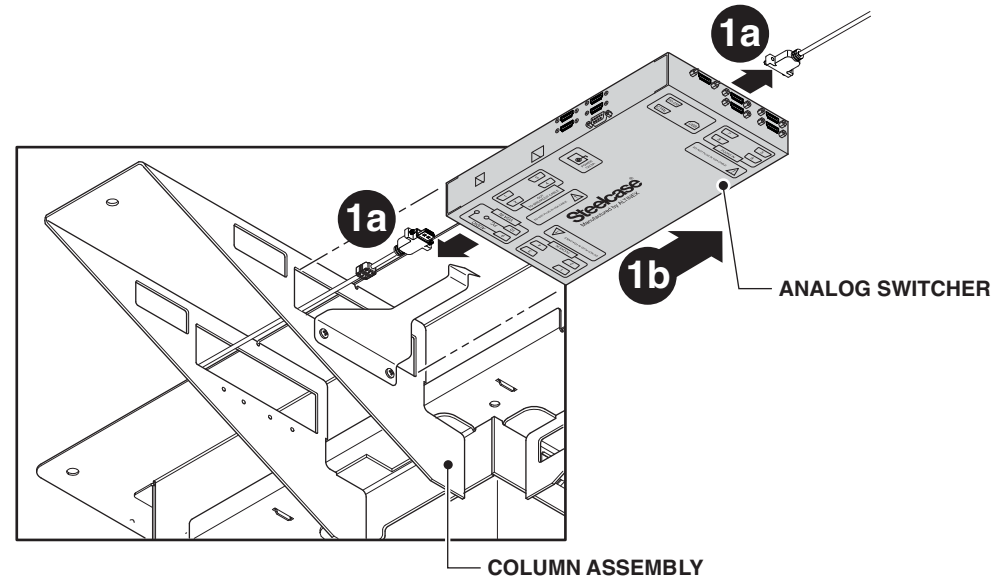
REMOVE COVERS

1. a) Use a hex drive to remove screws, then b) remove cover from the underside of table top.



REMOVE ANALOG COMPONENTS

- 1.** Disconnect cables, then remove analog switcher.
- 2.** On the back of the monitor, remove monitor cable, control box, and breakout cable.

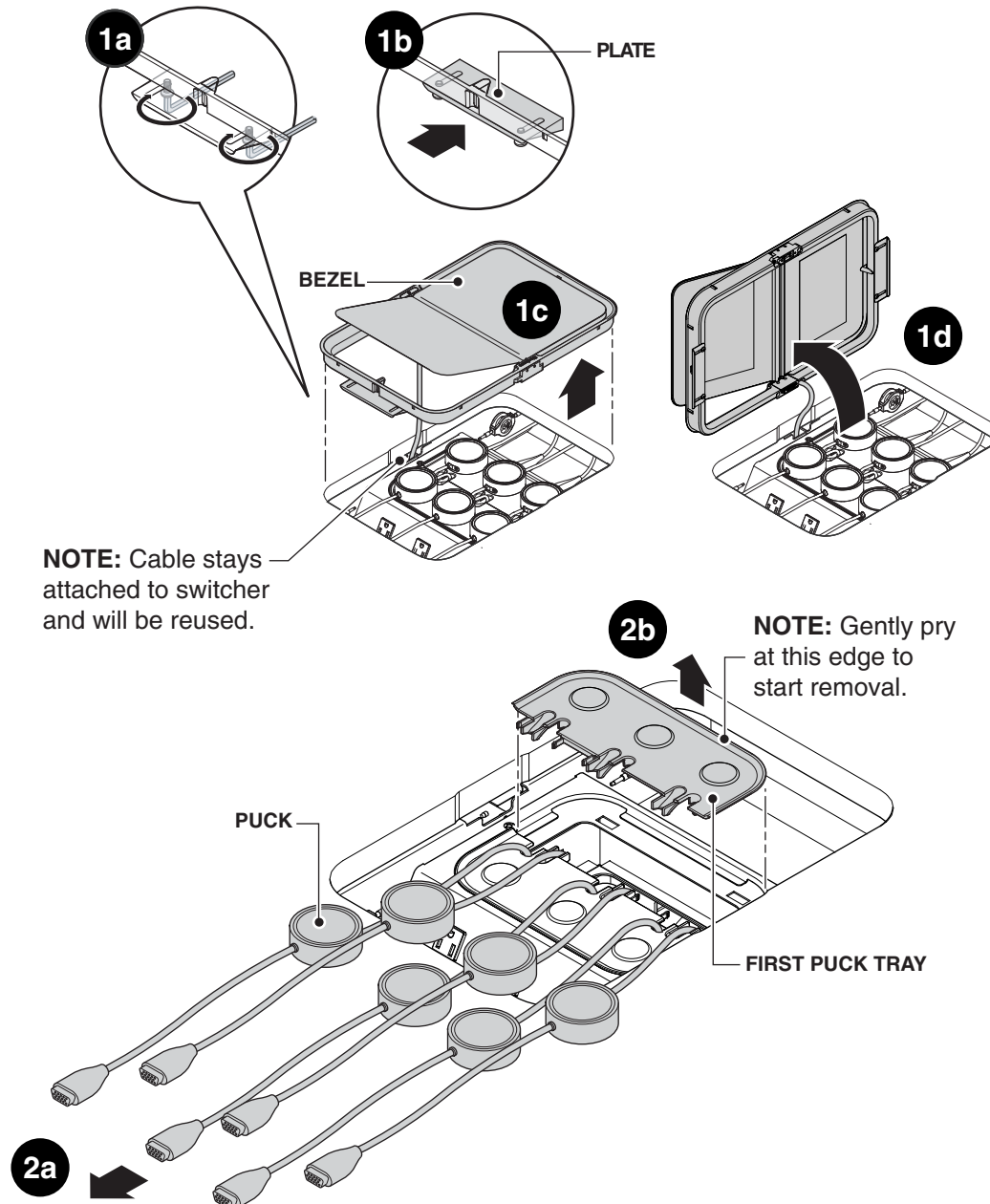


REMOVE ANALOG PUCKS

1. Bezel Removal

Loosen screws on each plate (1a).
Push plates inward (1b).
Remove bezel (1c) and prop on edge nearest cable (1d).

2. Removing the First PUCK Tray
Arrange PUCKs on one side of PUCK tray set (2a). Remove first PUCK tray (2b).

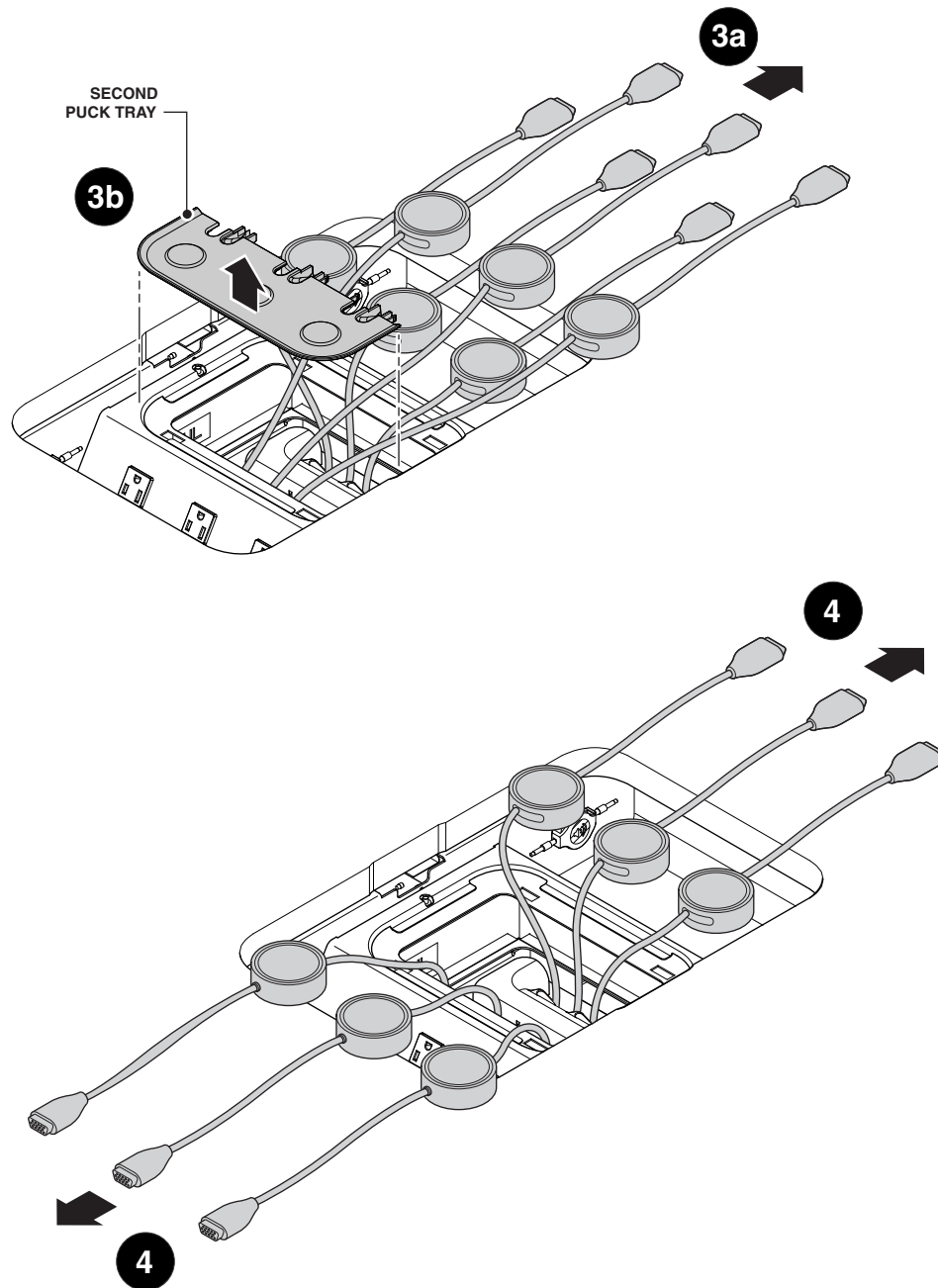


3. Removing the Second PUCK Tray

Arrange PUCKs on “empty” side (3a).
Remove second PUCK tray (3b).

4. Arranging and Examining the PUCK's

Arrange PUCKs each side of the column opening. Carefully study the arrangement of cables exiting the molded cable guide.



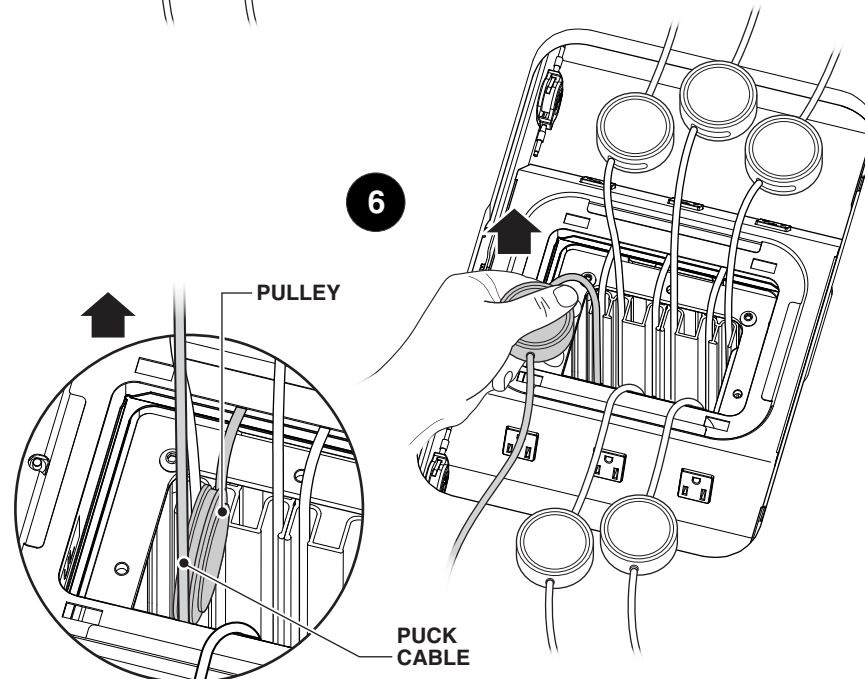
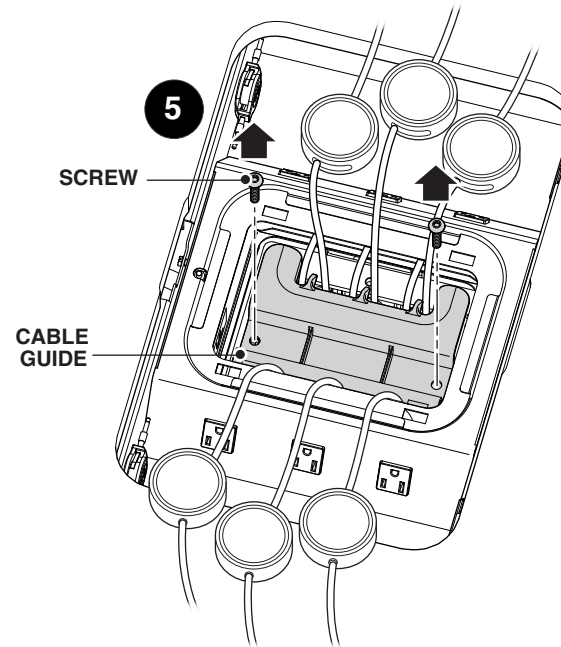
5. Removing the Cable Guide

To remove cable guide, loosen (2) screws with a 3/16" Allen wrench and remove. Rotate and remove cable guide.

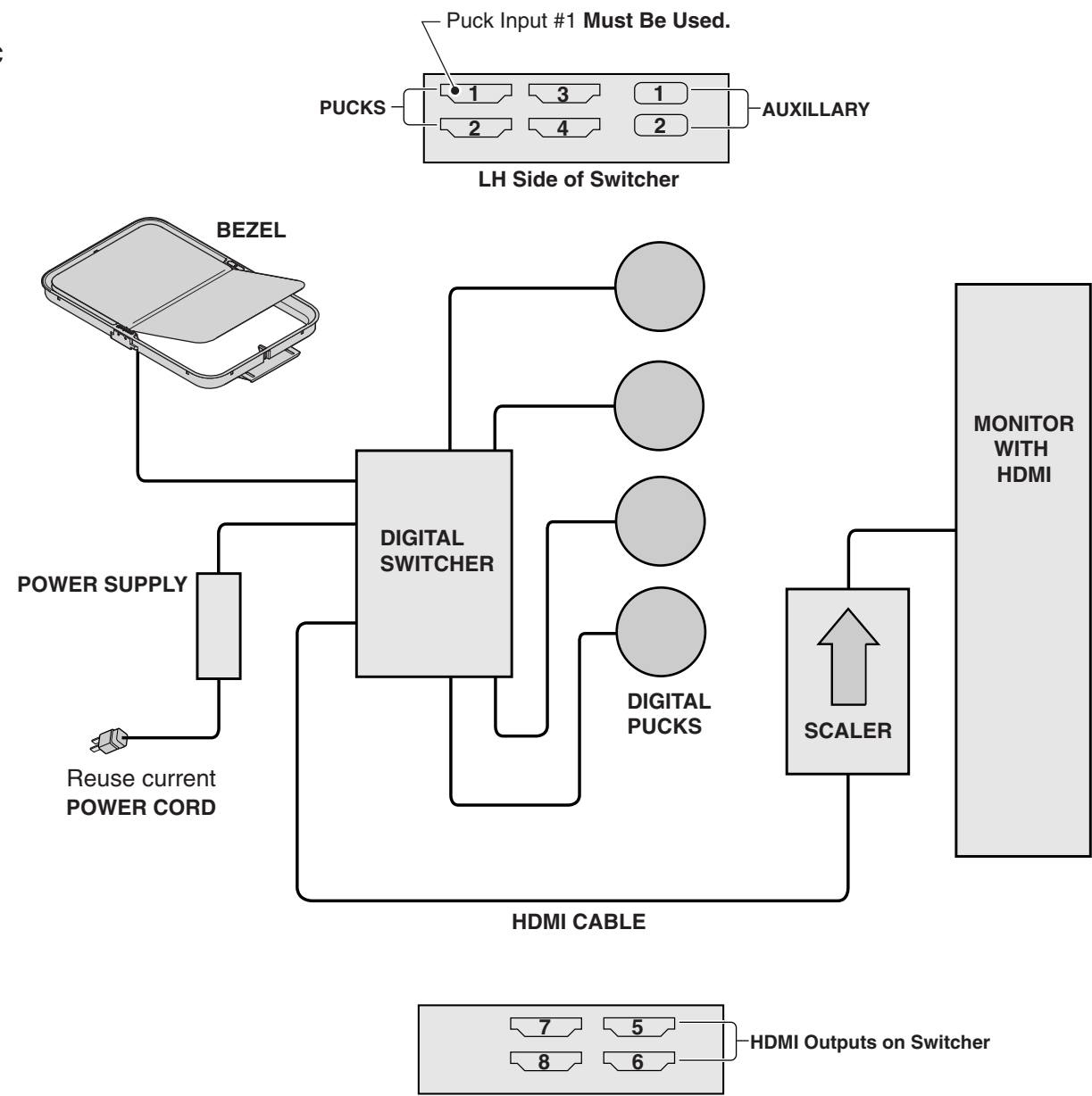
6. Examining and Removing the Pulley

For whatever puck you are replacing, remove its pulley by pulling the PUCK cable up. Remove aluminum pulley when it is at the top of the column.

NOTE: It is best to replace one **PUCK** at a time to minimize risk of improper cable routing.



SIMPLIFIED DIGITAL SCHEMATIC

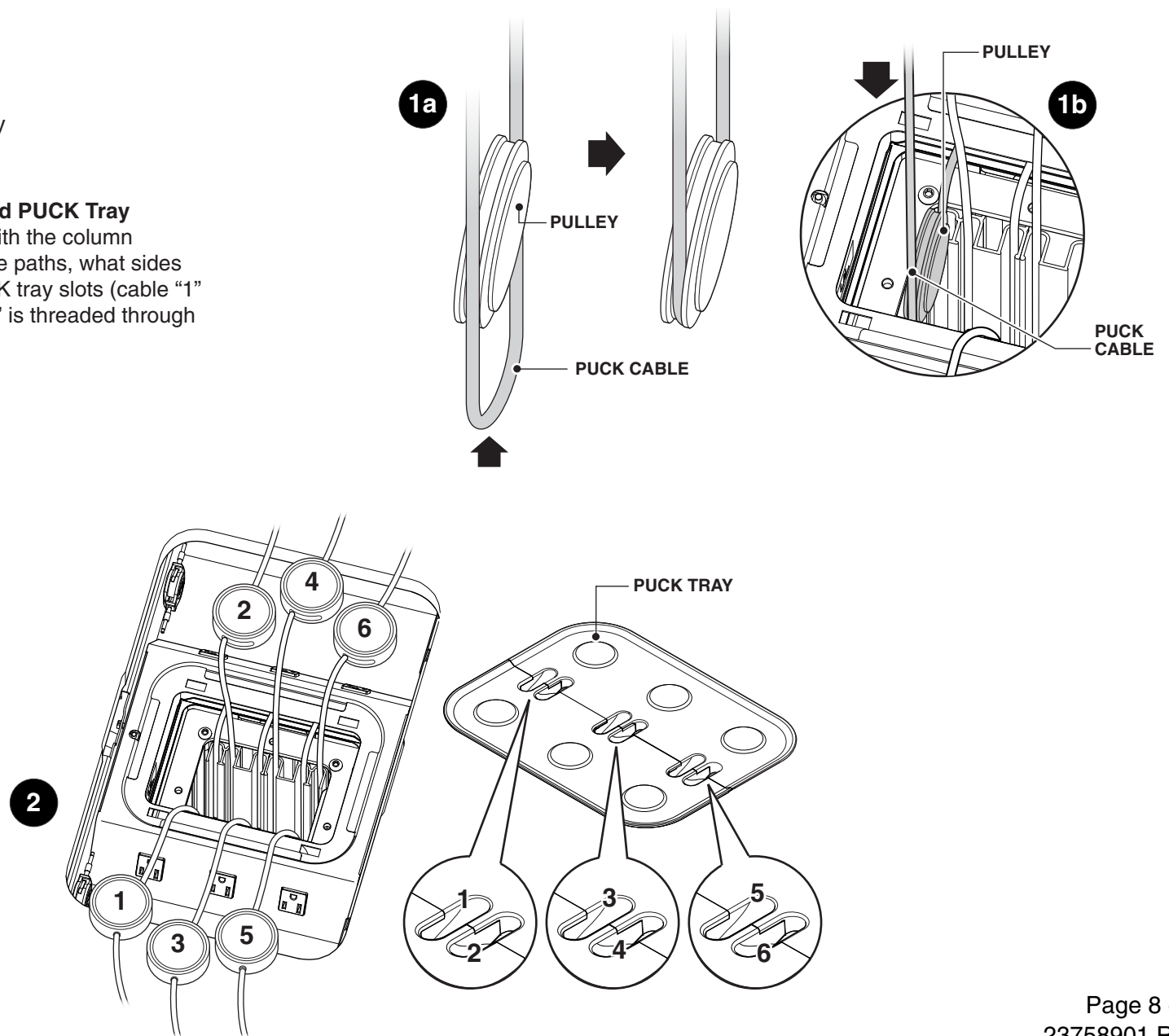


INSTALL DIGITAL PUCKS

1. Align PUCK cable with groove in pulley as shown (1a). Insert the pulley and cable into the column assembly.

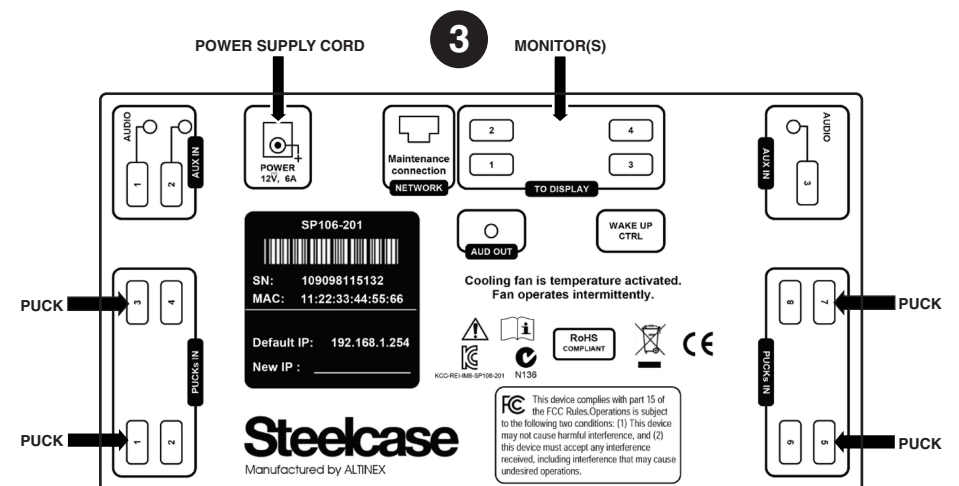
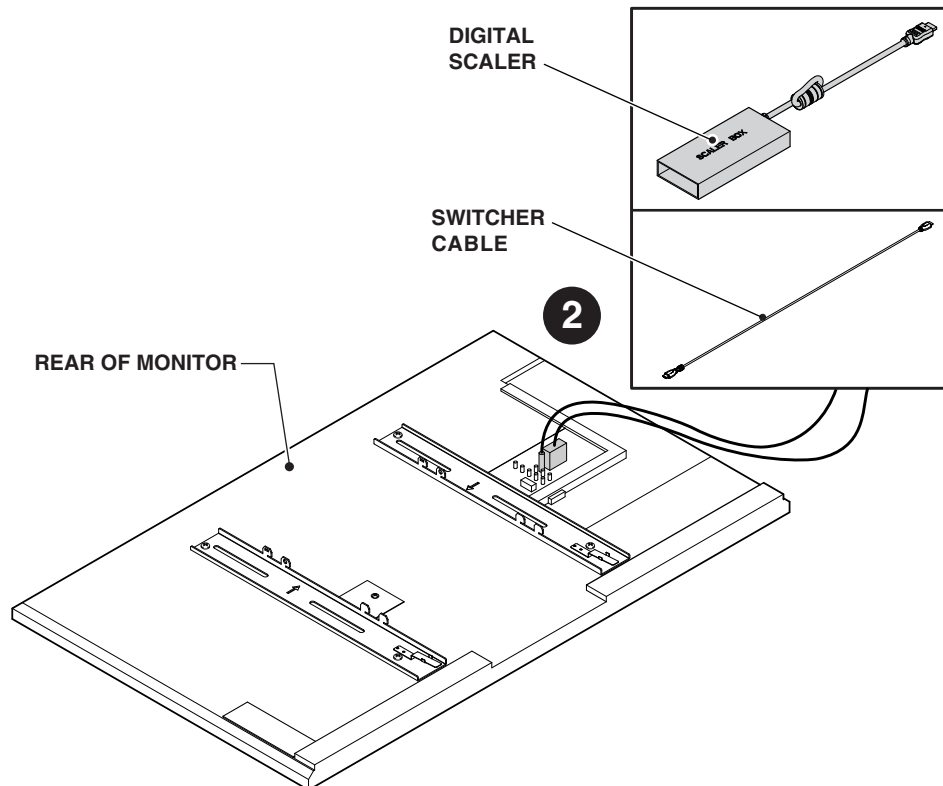
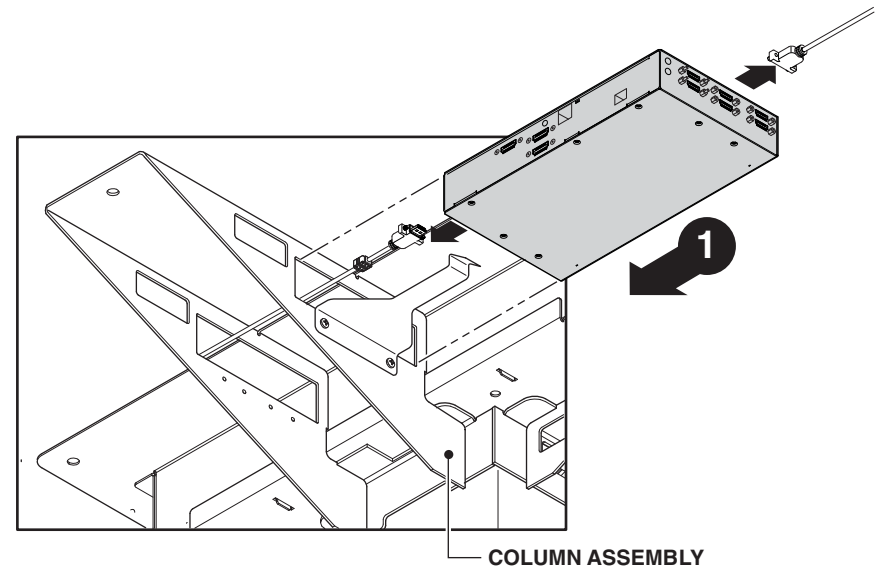
2. Examining the Cable Pattern and PUCK Tray

Look at the PUCK tray side by side with the column assembly. Notice the logic of the cable paths, what sides they exit from to line up with the PUCK tray slots (cable “1” is threaded through hole “1”, cable “2” is threaded through hole “2”, etc.)



INSTALL DIGITAL COMPONENTS

1. Install digital switcher and reconnect cables.
2. On the back of the monitor, connect monitor cable and scaler.
3. Connect cables to switcher.



You may need to configure media:scape technology:

- *if more than one display.*
- *if HDVC.*
- *if Resident PC.*
- *if other unique configuration is necessary.*

If you need help or direction, refer to media:scape Digital Switcher Manual or call Tech Support.

You must test the technology before leaving:

- *confirm all pucks work with laptops.*
- *confirm media:scape goes into and out of standby correctly (displays auto on / off).*
- *confirm system is ready to host HDVC or other system (if necessary).*
- *if other unique configuration is necessary.*

If there are any issues, call Tech Support while still on site.

REINSTALL COVERS

1. Install pyramid cover "a".
Secure pyramid cover "a" using (7) 5/16-18 x 7/8" button head screws.

2. Install pyramid cover "b".
Secure pyramid cover "b" using (7) 5/16-18 x 7/8" button head screws.

