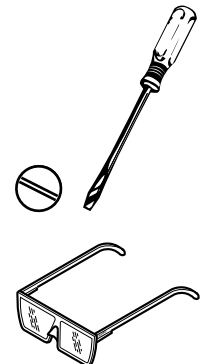


465 Think® Chair (New) Arm Replacement (Fixed and Adjustable Arms)



If you have a problem, question, or request, call
your local dealer, or Steelcase Line 1 at
888.STEELCASE (888.783.3522)
for immediate action by people who want to help you.

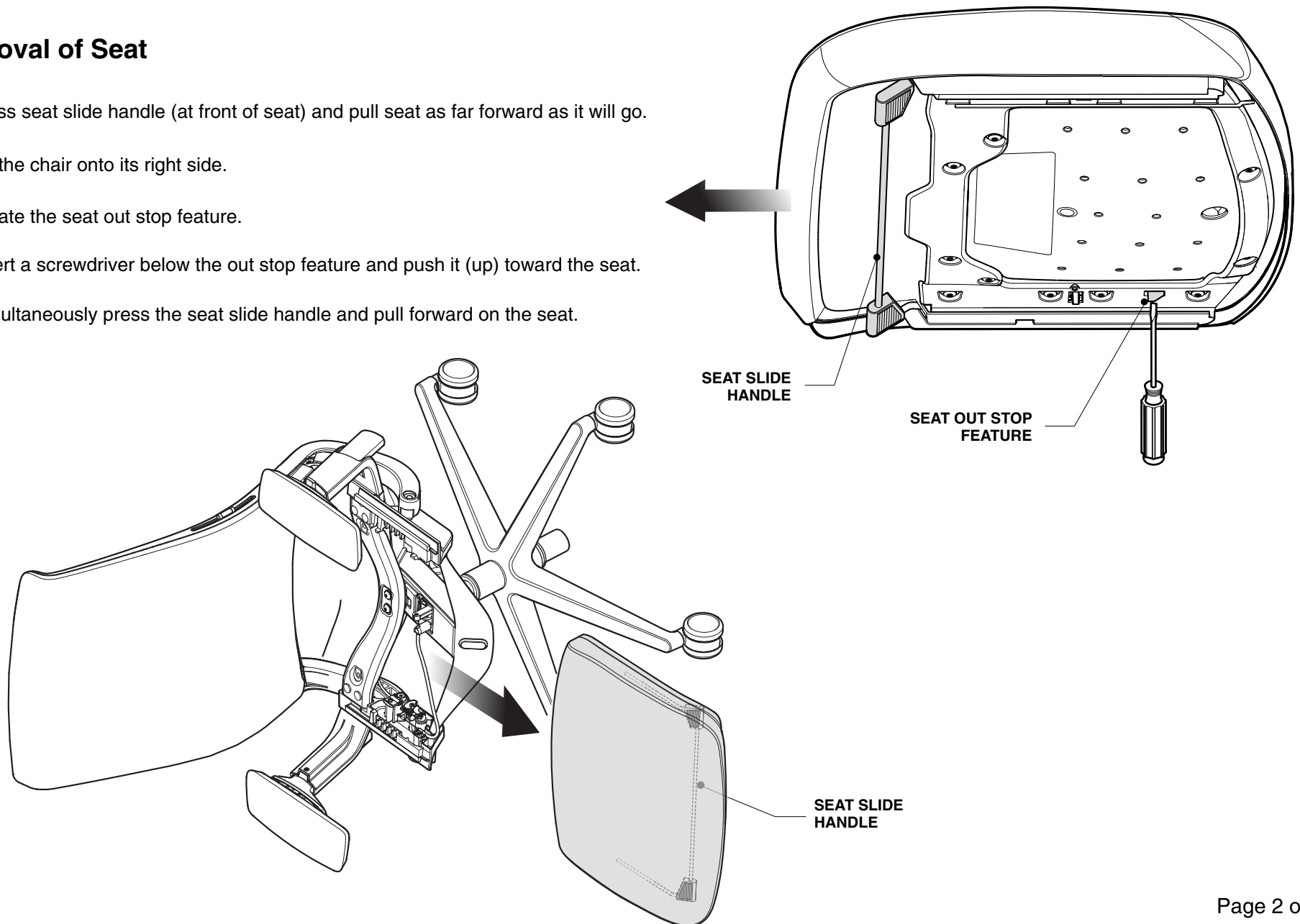
(Outside the U.S.A., Canada, Mexico, Puerto Rico,
and the U.S. Virgin Islands, call: 1.616.247.2500)
Or visit our website: www.steelcase.com

© 2014 Steelcase Inc.
Grand Rapids, MI 49501
U.S.A.

Printed in U.S.A.

Removal of Seat

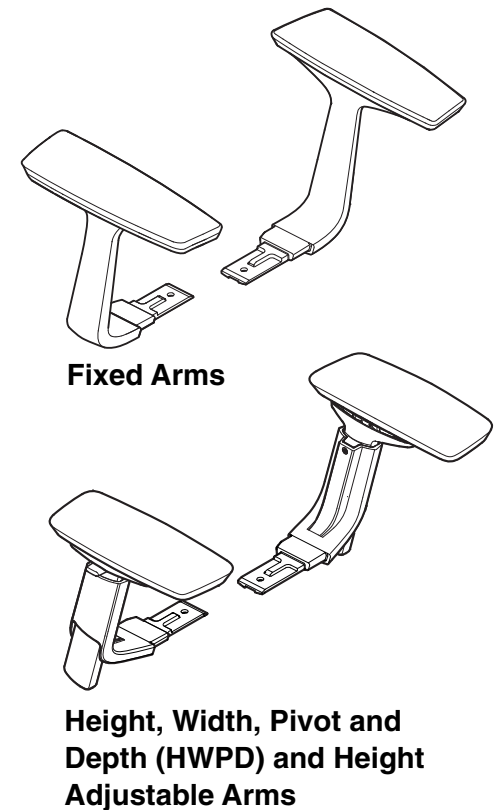
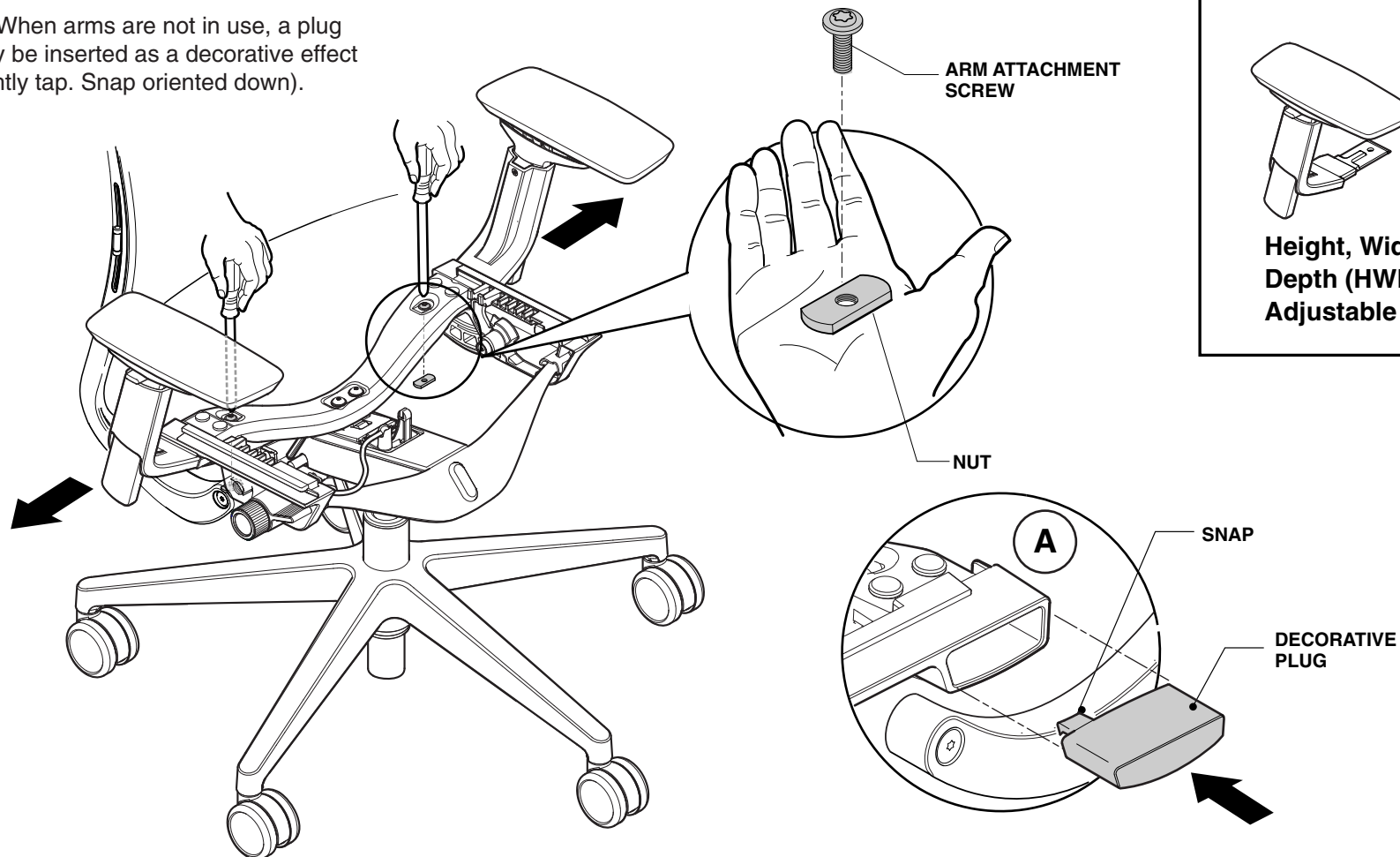
1. Press seat slide handle (at front of seat) and pull seat as far forward as it will go.
2. Tip the chair onto its right side.
3. Locate the seat out stop feature.
4. Insert a screwdriver below the out stop feature and push it (up) toward the seat.
5. Simultaneously press the seat slide handle and pull forward on the seat.



Removal of Arms

1. Remove arm attachment screws and nuts with Torx T30 screwdriver.
2. Slide arm assembly out of the seat rail.
3. Reverse steps 1 & 2 to install replacement (new) chair arms.

A. When arms are not in use, a plug may be inserted as a decorative effect (lightly tap. Snap oriented down).



Reinstall Seat

1. Reinstall the seat onto the chair by aligning slots in the seat with the slide bearings. Push seat from the front while simultaneously pressing the seat slide handle. Push the seat with enough force to move beyond the seat out stop feature. Once positioned, press the seat slide handle and pull the seat forward to verify the seat is properly assembled to the chair.

