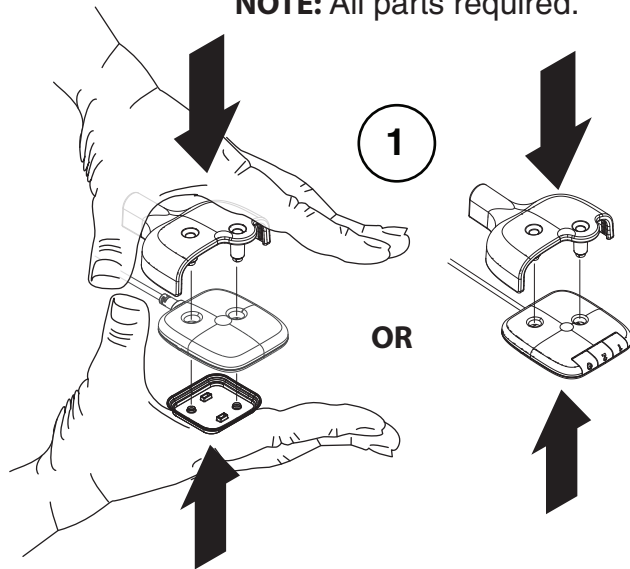
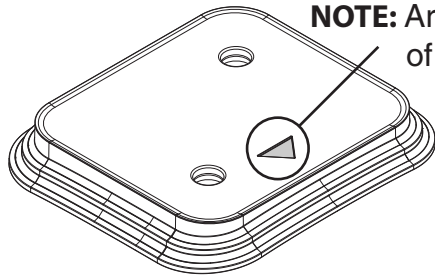


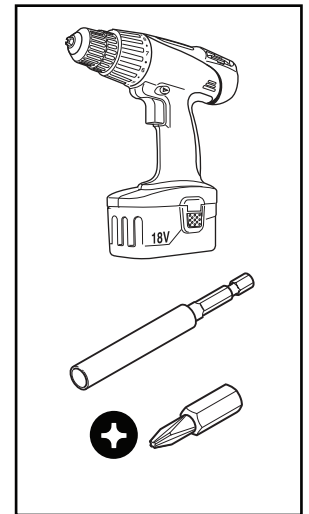
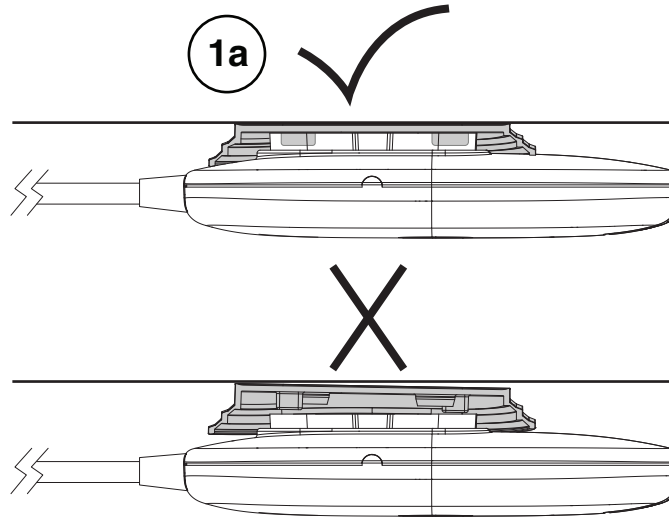
NOTE: All parts required.



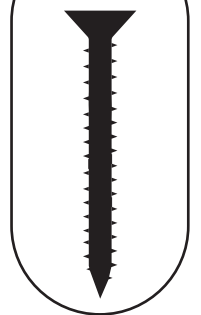
NOTE: Arrow points to front of work surface.



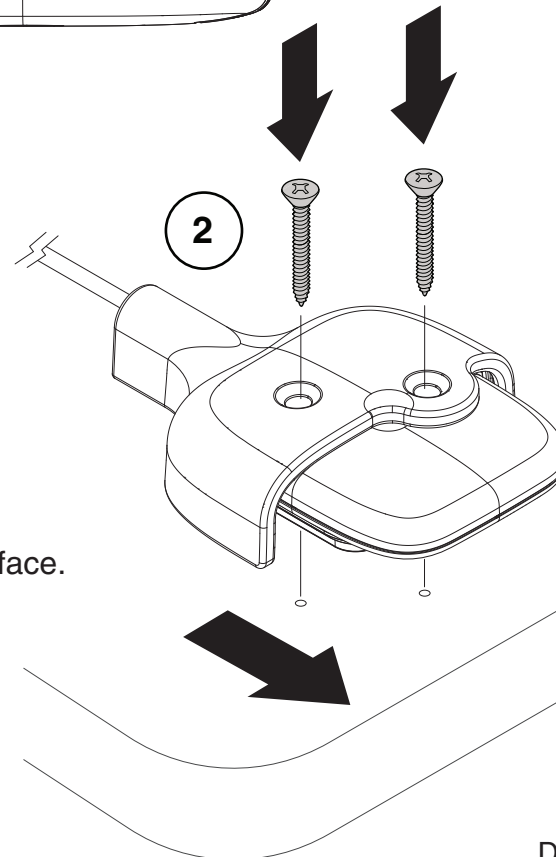
1a



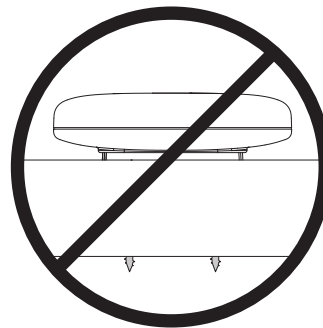
#6 x 1.5"



2



NOTE: If guard is not attached, screws will go through work surface.



If you have a problem, question, or request, call your local dealer, or Steelcase Line 1 at **888.STEELCASE** (888.783.3522) for immediate action by people who want to help you.

(Outside the U.S.A., Canada, Mexico, Puerto Rico, and the U.S. Virgin Islands, call: 1.616.247.2500) Or visit our website: www.steelcase.com

© 2019 Steelcase Inc.
Grand Rapids, MI 49501
U.S.A.

Printed in U.S.A.



3D Assembly Direction

NOTE: Check controller engagement after installation.
Loosen screws ¼ turn if controller does not engage properly.

3

