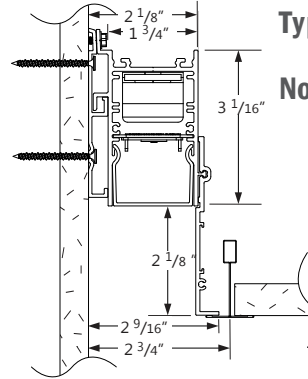
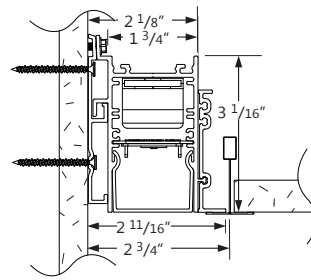


Flush

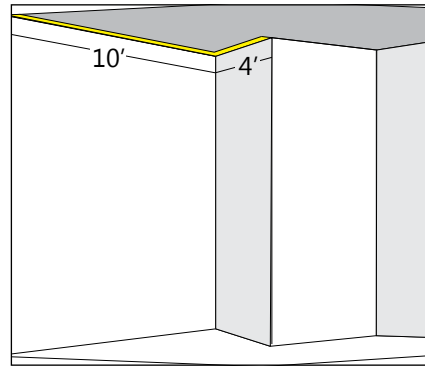
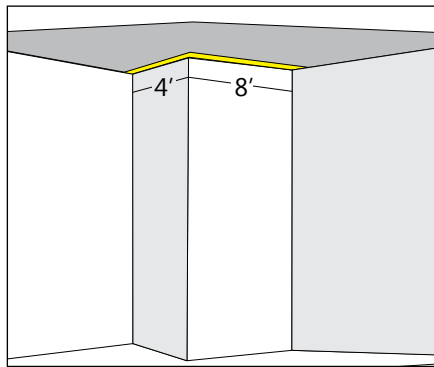
2" Regressed



Project _____

Type _____

Notes _____



SCPLED	OPRO(1)	12'
PRODUCT ID	LINEAR OR CORNER QTY	TOTAL LENGTH

SCPLED	OPRI(1)	14'
PRODUCT ID	LINEAR OR CORNER QTY	TOTAL LENGTH

3D VIEW - Outside Corner Pattern

3D VIEW - Inside Corner Pattern

Ordering Guide

SCPLED		CORNER QUANTITY (OPTIONAL)		NOM. LUMENS/FT		CRI		COLOR TEMP.		SHIELDING	
PRODUCT ID	SCULPT PERIMETER LED	OPRO(#)	open shape recessed outside lit corner	300	300 lm/ft - Minimum	80	80 CRI	27	2700 K	FL	flush
PRODUCT ID	SCULPT PERIMETER LED	+OPRI(#)	open shape recessed inside lit corner	1000	1000 lm/ft - Maximum	90	90 CRI	30	3000 K	RG2	regressed 2"
PRODUCT ID	SCULPT PERIMETER LED							35	3500 K		
PRODUCT ID	SCULPT PERIMETER LED							40	4000 K		

Outputs between listed min and max are available. Consult factory for outputs outside of the listed range.

LENGTH	FINISH	VOLTAGE	DRIVER	CIRCUITS	MOUNTING
# total length	W white C custom	120 120 V 277 277 V 347 347 V UNV universal	DP dimming (0-10V) 1% LT Lutron ⁽¹⁾ BI bi-level dimming O other ⁽²⁾	1 1 circuit 2 2 circuits +E(#) emergency circuit ⁽³⁾ +NL(#) night light section ⁽³⁾ +GTD(#) generator transfer device ⁽³⁾	TB9 t-bar 9/16" TB15 t-bar 15/16" ST screw slot t-bar TG9 tegular 9/16" DS drywall spackle flange DF drywall flange

(1) Specify system
(2) Please consult factory; see page 2

(3) Specify quantity

BATTERY (OPTIONAL)	POWER FEED (OPTIONAL)	OTHER (OPTIONAL)	CUSTOM (OPTIONAL)
B# battery pack 4' sections	EF end feed	F fuse ⁽⁶⁾ +FW(#) flex whip (6' std) +CP Chicago plenum	C custom

Not available with 347V
Please consult factory

See page 2 for more details

(6) Requires 120V or 277V

Please specify



LED SYSTEM

CRI	Minimum 80 or 90 color rendering index
CCT	Choice of 2700K, 3000K, 3500K and 4000K color temperature with a great color consistency (within 3.0-step MacAdam ellipse).
LED life	Minimum 50,000h with 85% of lumen maintenance in 25°C ambient temperature, in compliance with IES LM-80 testing measurements.
Thermal Management	Aluminum housing acting as the heat sink to maximize life.

CONSTRUCTION

Housing	Extruded aluminum (0.080" nominal) up to
End Cap	Die cast aluminum
Interior Brackets	Die formed sheet steel (20 gauge)
Lenses	Extruded acrylic (0.060" nominal) - injection moulded
Hanger	Die cast aluminum
Suspension	Sliding aircraft cable along product length
Cable Grips	Quick connecting / release

ELECTRICAL

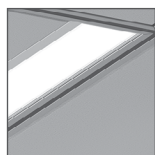
Lutron driver	LDE1 - EcoSystem H-Series (1%) LDE5 - EcoSystem 5-Series (5%) LTE - Hi-Lume® A-series 2Wires Forward Phase (1%)
Other drivers	DALI - Digital Addressable Lighting Interface DMX - Digital Multiplex LV - line voltage - Advance Mark 10 Xitanium SR - For wireless sensor
Emergency	remote emergency battery pack or emergency circuit optional.
Input Voltage	120V, 277V, 347V, UNV.

i Incorporating these components may have limitations or affect the length of the luminaire. Please contact factory for more details.

WARRANTY

Axis lighting will warrant defective LEDs, boards, and drivers for 5 years from date of purchase. Warranty is valid if luminaire is installed and used according to specifications. If defective, Axis will send replacement boards or drivers at no cost along with detailed replacement instructions and instructions on how to return defective components to Axis.

SHIELDING - Frosted acrylic Spotless lens



FL flush

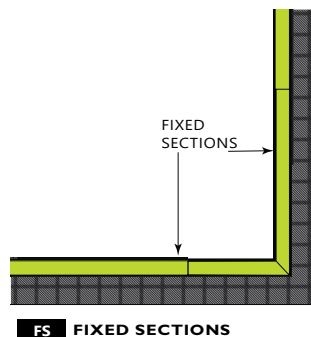


RG2 regressed 2"

FINISH

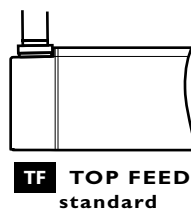
Powder coated and custom finishes are also available.

FIXED SECTION

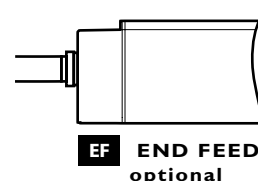


FS FIXED SECTIONS

POWER FEED



TF TOP FEED
standard



EF END FEED
optional

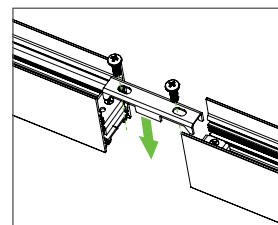
WEIGHT

Recessed 4 ft	8 lbs / 3.6 kg
Recessed 8 ft	16 lbs / 7.3 kg
Recessed 12 ft	24 lbs / 10.9 kg

JOINERS


In order to allow very long runs of SCULPT luminaires, Axis has developed an effective joining system. Special care has been taken to maximize the performance of the joiner for each SCULPT option.

NOTE: Mount each system segment individually. Do not assemble system prior to mounting.

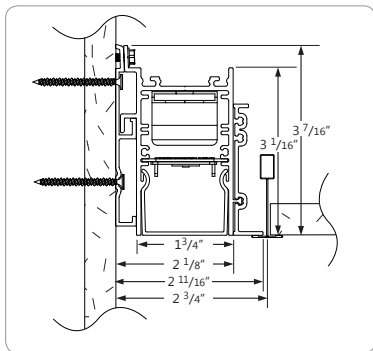


i Allow a minimum of 6" between end of long runs and vertical wall

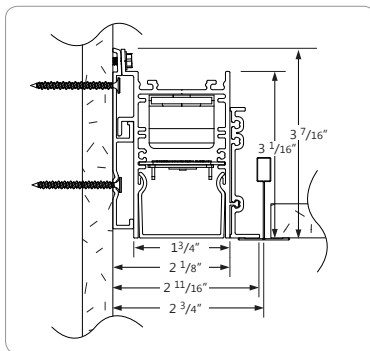
APPROVALS

Certified to UL and CUL standards 
Meets CCEC requirements (Chicago plenum)
Suitable for damp locations.
IC Rated (Insulated ceiling)

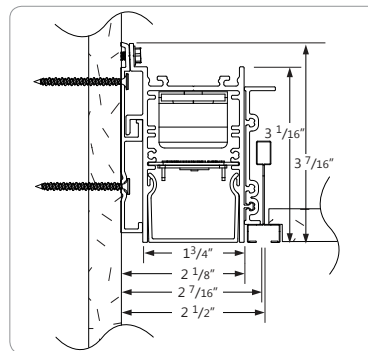
● TB CEILING MOUNTING OPTIONS



TB9 9/16" T-BAR

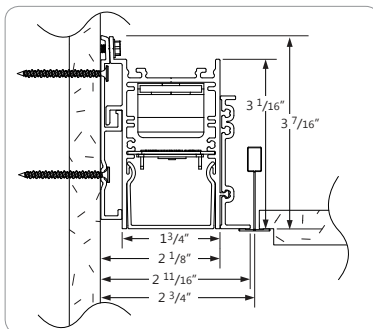


TB15 15/16" T-BAR

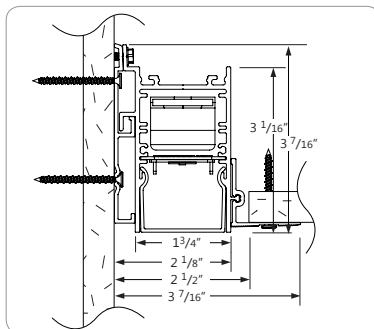


ST SCREW SLOT T-BAR

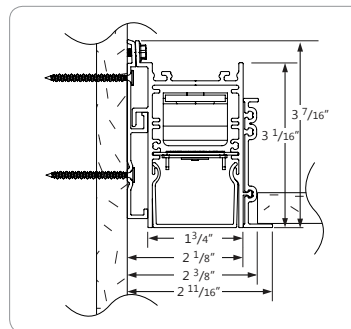
● DRYWALL CEILING MOUNTING OPTIONS



TG9 REGULAR 9/16"



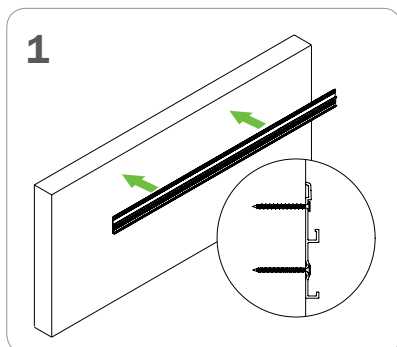
DS SPACKLE FLANGES



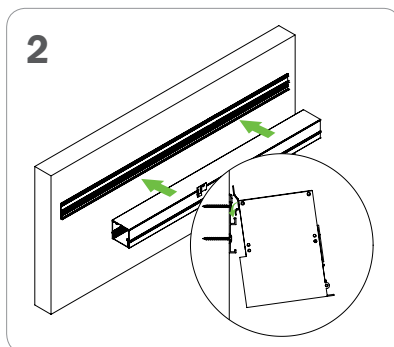
DF VISIBLE FLANGES
WALL MOUNTING

i Shown with flush shielding

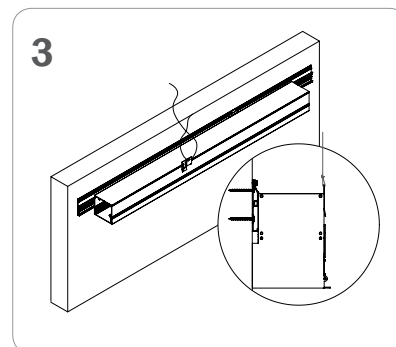
● INSTALLATION GUIDE



1
Install wall track level and secure to structure at small grooves in extrusion.



2
Hook Perimeter luminaire onto wall track.



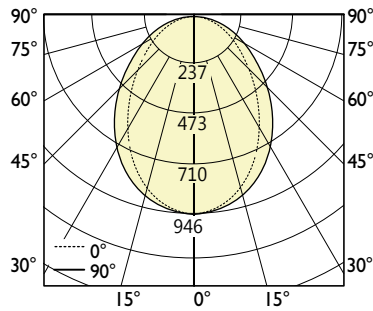
3
Secure to wall track, secure to structure.

● PHOTOMETRIC DATA (ADDITIONAL IES FILES AVAILABLE ON WEBSITE)

500 lm/ft linear with Flush lens



PHOTOMETRIC CURVE



Lumen/ft down: 501 lm/ft
Total Lumens: 2004 lm (for 4ft)
Input Watts: 22.2 W
Efficacy: 90 lm/W

80 CRI shown. For 90 CRI, divide wattage by 0.8 and multiply efficacy by 0.8.

IES FILE:SCR-500-80-35-F-4-W-UNV-D-1.IES

TESTED ACCORDING TO IES LM-79-2008

CANDELA DISTRIBUTION

Vertical Angle	0	22.5	45	67.5	90
0	943	943	943	943	943
5	932	938	934	938	940
15	884	887	872	860	859
25	788	780	750	723	715
35	656	641	599	559	544
45	508	491	446	408	392
55	361	346	310	279	266
65	227	216	193	174	167
75	110	105	96	88	86
85	21	21	23	24	23
90	0	1	3	4	4

ZONAL LUMENS

Zone	Lumens
0	
0-10	89
10-20	245
20-30	345
30-40	375
40-50	346
50-60	280
60-70	194
70-80	103
80-90	27
90	1

LUMINANCE DATA (cd/m²)

Vertical Angle	0	45	90
45	14871	13045	11453
55	13026	11161	9585
65	11088	9429	8163
75	8767	7698	6843
85	4868	5504	5504

i All IES files are available for download at: www.axislighting.com