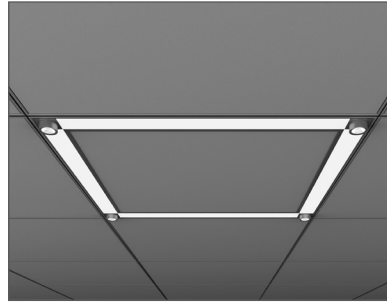


Linear option shown



Kit option shown

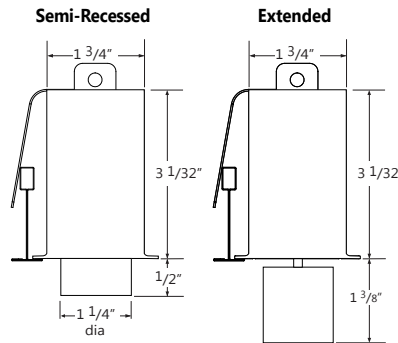
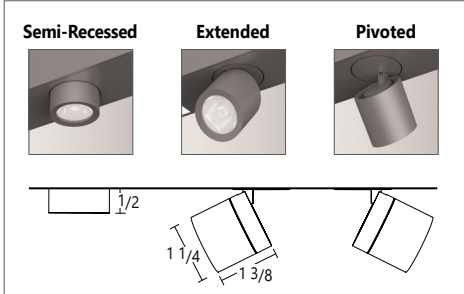
Project \_\_\_\_\_

Type \_\_\_\_\_

Notes \_\_\_\_\_

### PERFORMANCE

Beam Spread	24°	36°	60°
BCBP	2287 cd	796 cd	446 cd



**A configuration drawing is required**

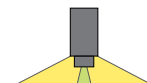
See page 8

### Ordering Guide

SCRLAC	ACCENT QTY	BEAM	SHIELDING for-ACCENT (OPTIONAL)	DRIVER - for ACCENT
PRODUCT ID	AC(%)			
SCRLAC Sculpt Recessed with lens and Accent LED	Accent quantity	D24 24 deg D36 36 deg D60 60 deg	HX hexcell	DP dimming (0-10V) 1%
All Accents on a module will have the same beam spread. Final beam spread arrangements will be specified on shop drawings.			1/8" extended insert	

NOM.LUMENS/FT for-Sculpt	CRI	COLOR TEMP.	SHIELDING for-Sculpt	LINEAR LENGTH or CEILING KIT (select one)	FINISH
300 300 lm/ft 400 400 lm/ft 500 500 lm/ft	80 80 CRI 90 90 CRI	27 2700 K 30 3000 K 35 3500 K 40 4000 K	FL flush 0.5M 0.5" StepLens, lum. end cap 0.5P 0.5" StepLens, opaque end cap 2M 2" StepLens, lum. end cap 2P 2" StepLens, opaque end cap +BL(%) Blank (for flush option only)	4 4' 8 8' 12 12' S# System Run L L shape 2' * U U shape 2' * 2x2 2'x2' * 2x4 2'x4' * 2x6 2'x6' * 2x8 2'x8' * 2x10 2'x10' * 2x12 2'x12' * 4x4 4'x4' * K(%) Other kits *	AP aluminum paint W white BLK black
Please consult factory for other lumen packages	Applies for both Accent and LED	Applies for both Accent and LED	All lens options use spotless lens	* Available as kit; Sculpt accommodates any length. Metric lengths also available, please consult factory.	

VOLTAGE	DRIVER for-Sculpt	CIRCUITS	MOUNTING/SUSPENSION	CUSTOM (OPTIONAL)
120 120 V 277 277 V 347 347 V UNV universal	DP dimming (0-10V) 1% LT Lutron * BI bi-level dimming O other **	1 1 circuit 2 2 circuits	MFTB9 MiniFlange t-bar 9/16" * MFTB15 MiniFlange t-bar 15/16" * MFST MiniFlange screw slot t-bar * MFTG9 MiniFlange 9/16" t-tetular * MFTG15 MiniFlange 15/16" t-tetular * TB9 t-bar 9/16" TB15 t-bar 15/16" ST screw slot t-bar TG9 tetular 9/16" TG15 tetular 15/16" DF drywall flange D drywall flangeless DB slip-through bracket DS drywall spackle flange	C custom
Applies to both Accent & LED	* Specify system ** Please consult factory		* Must select from these options when ordering kits. See page 3 for more details.	Please specify



### LED SYSTEM

<b>CRI</b>	Minimum 80 or 90 color rendering index
<b>CCT</b>	Choice of 2700K, 3000K, 3500K and 4000K color temperature with a great color consistency (within 3.0-step MacAdam ellipse).
<b>LED life</b>	Minimum 50,000h with 70% of lumen maintenance in 25°C ambient temperature, in compliance with IES LM-80 testing measurements.
<b>Thermal Management</b>	Aluminum housing acting as the heat sink to maximize life.

### CONSTRUCTION

<b>Housing</b>	Extruded aluminum (0.080" nominal)
<b>End Cap</b>	Die cast aluminum
<b>Interior Brackets</b>	Die formed sheet steel (20 gauge)
<b>Reflectors</b>	White powder coated sheet steel (22 gauge)
<b>Lenses</b>	Extruded acrylic (0.060" nominal) - injection moulded
<b>Hanger</b>	Die cast aluminum
<b>Suspension</b>	Sliding aircraft cable along product length
<b>Cable Grips</b>	Quick connecting / release

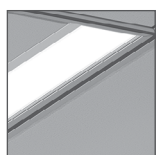
### ELECTRICAL

**Input Voltage** 120V, 277V, UNV.

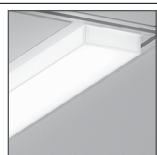
### WARRANTY

Axis lighting will warrant defective LEDs, boards, and drivers for 5 years from date of purchase. Warranty is valid if luminaire is installed and used according to specifications. If defective, Axis will send replacement boards or drivers at no cost along with detailed replacement instructions and instructions on how to return defective components to Axis.

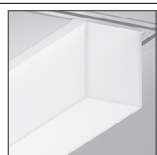
### SHIELDING - Frosted acrylic Spotless lens



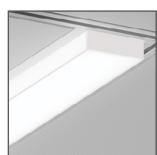
FL flush



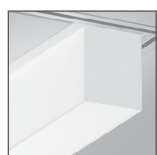
0.5M 0.5" StepLens, lum. end cap



2M 2" StepLens, lum. end cap



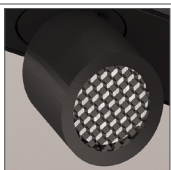
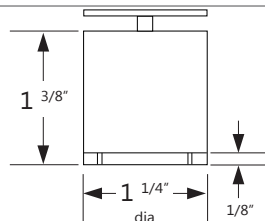
0.5P 0.5" StepLens, opaque end cap



2P 2" StepLens, opaque end cap



### HEXCELL SHIELDING OPTIONS



### SAFETY NOTE

Although Accent lamps operate at cooler temperatures than halogen lamps, it is recommended that gloves be worn when adjusting Accents that have been energized.

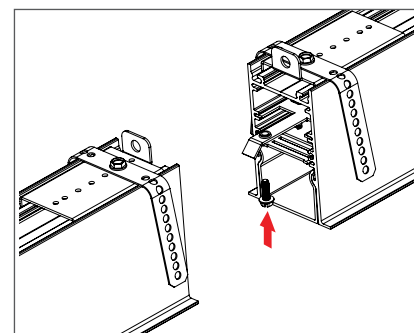
**\*Patent Number: 9416535 B1**

### WEIGHT

<b>4 ft</b>	8 lbs / 3.6 kg
<b>8 ft</b>	16 lbs / 7.3 kg
<b>12 ft</b>	24 lbs / 10.9 kg

### JOINERS

In order to allow very long runs of SCULPT luminaires, Axis has developed an effective joining system. Special care has been taken to maximize the performance of the joiner for each SCULPT option.



**NOTE:** Mount each system segment individually. Do not assemble system prior to mounting.

**i** Allow a minimum of 6" between end of long runs and vertical wall

### APPROVALS

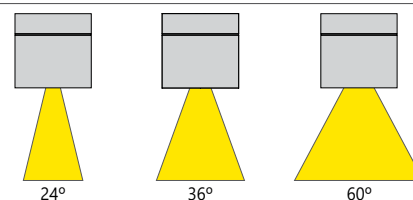
Certified to UL and CUL standards  
Suitable for damp locations.



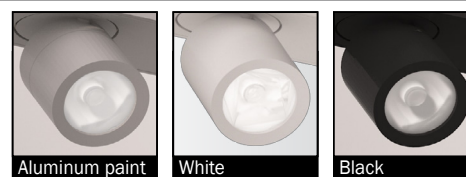
### SYSTEM (S#)

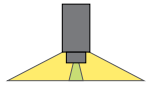
SCULPT linear systems, with the use of a strong profile, allow for a nearly hair thin connection system of continuous runs. Lengths of 4', 8', 12' as well as custom lengths are available. Runs of SCULPT that are greater than 12' in length are designated as systems (S#). This means that the run is comprised of a combination of 4', 8' and/or 12' sections to be assembled on site using our joining system. For more information on systems and joining, please refer to the SCULPT installation sheets available for download at [www.axislighting.com](http://www.axislighting.com).

### BEAM SPREADS

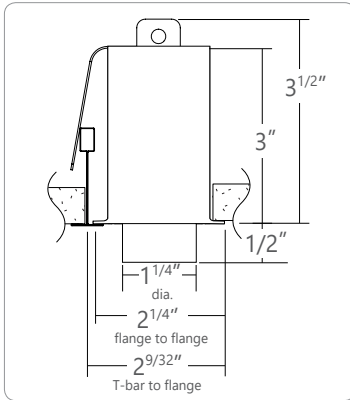


### FINISHES

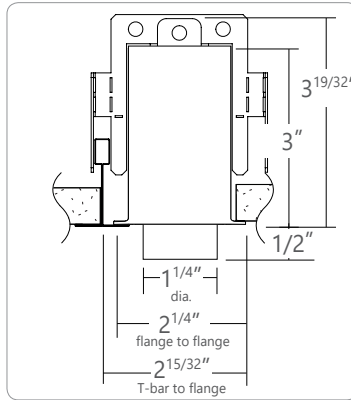




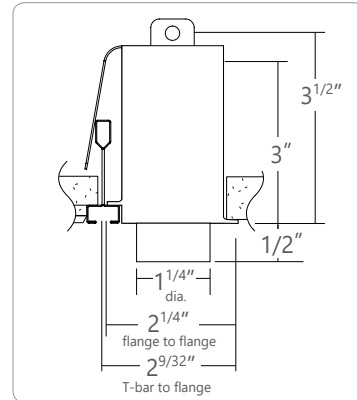
### ● KIT AND LINEAR - WITH INTEGRATED



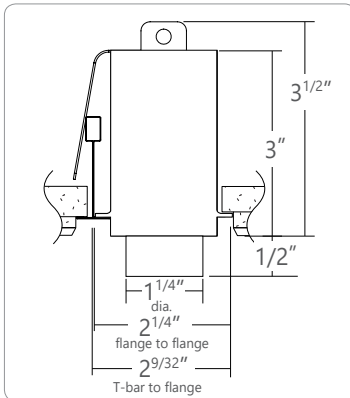
**MFTB9 MiniFlange 9/16" T-BAR**



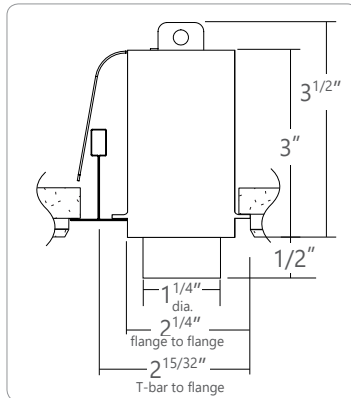
**MFTB15 MiniFlange 15/16" T-BAR**



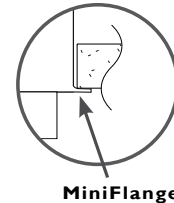
**MFST MiniFlange SCREW SLOT T-BAR**



**MFTG9 MiniFlange 9/16" T-TEGULAR**



**MFTG15 MiniFlange 15/16" T-TEGULAR**

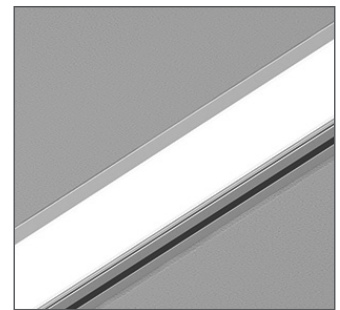


**MiniFlange**

### Integrated MiniFlange (patent pending)

When installed along T-bars in acoustic ceilings, the Integrated MiniFlange supports adjacent ceiling tiles. At the same time, it **eliminates the need for a second T-bar**. This feature comes standard on Sculpt Recessed.

- Fewer materials needed and less labor.
- Conceals ceiling tile cutline for a cleaner appearance.
- Simplifies drawings and trade coordination.
- Available in different T-bar profiles.

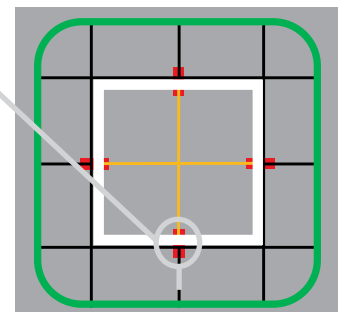


**With Integrated MiniFlange**

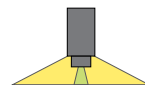
### The T-Aligner™ (patent pending)

- Foolproof solution for a perfectly aligned ceiling grid.
- Connects cut T-bars on either side of a Sculpt luminaire or ceiling kit.
- No need to specify – Comes standard with Sculpt Recessed.
- Compatible with all T-bar profiles including slot and Tegalur (9/16" and 15/16").

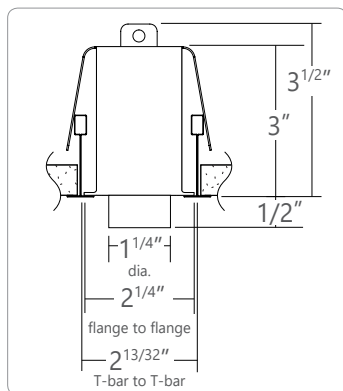
T-Aligners are installed where T-bars intersect the luminaire or ceiling kit.



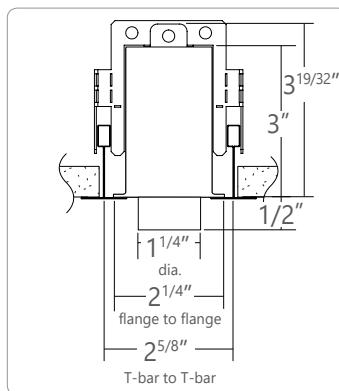
**View from above ceiling**



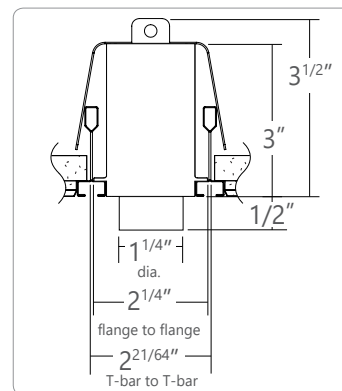
### ● STANDARD T-BAR CEILING MOUNTING OPTIONS



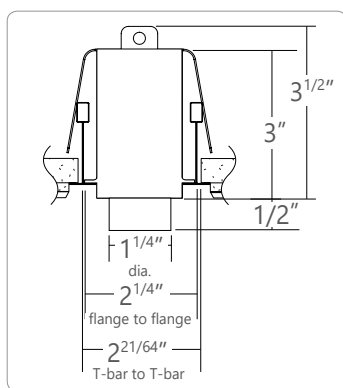
**TB9 9/16" T-BAR**



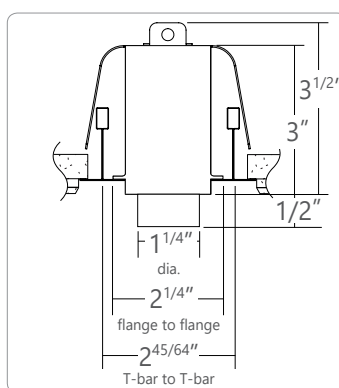
**TB15 15/16" T-BAR**



**ST SCREW SLOT T-BAR**

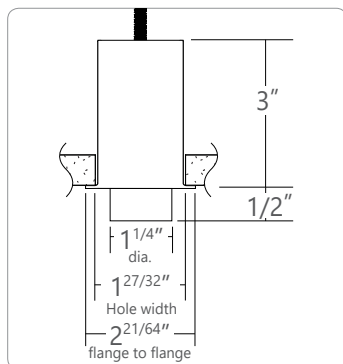


**TG9 9/16" T-TEGULAR**

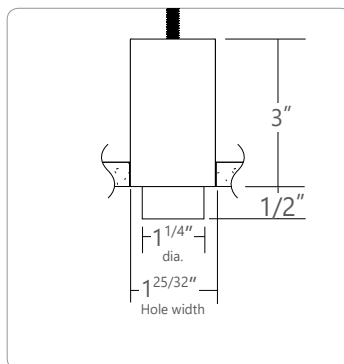


**TG15 15/16" TEGULAR**

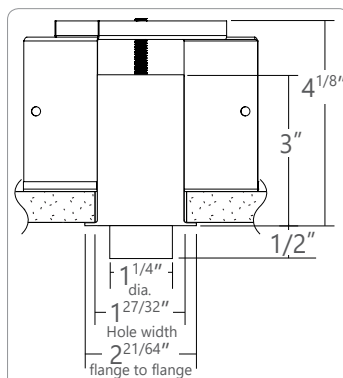
### ● DRYWALL CEILING MOUNTING OPTIONS



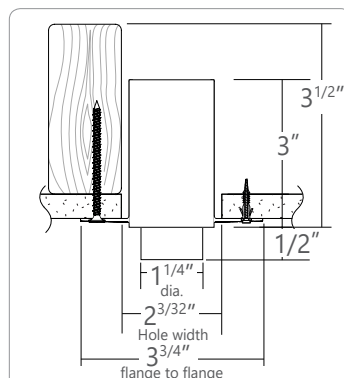
**DF VISIBLE FLANGES WITH 1/4-20 STUD MOUNTING**



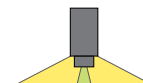
**D FLANGELESS WITH 1/4-20 STUD MOUNTING**



**DB SLIP-THROUGH BRACKET**

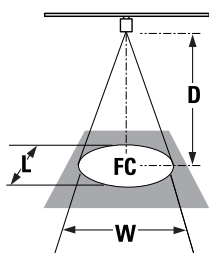


**DS DRYWALL SPACKLE FLANGE**

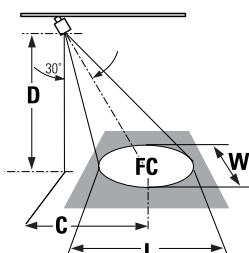


### ● PHOTOMETRIC DATA FOR ACCENT

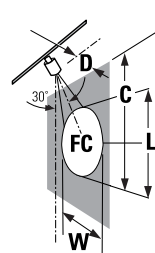
L = Beam Length  
W = Beam Width  
D = Distance  
C = Distance to Center Beam  
A = Aiming Angle  
FC = Foot Candle



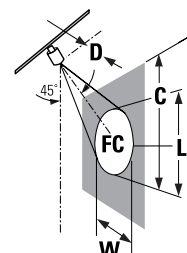
0° horizontal aiming angle






30° horizontal aiming angle



30° vertical aiming angle



45° vertical aiming angle

Beam Spread	CBCP	Rated Life (hrs.)	D	C	FC	L	W	D	C	FC	L	W	D	C	FC	L	W	D	C	FC	L	W
	2287 cd	50,000 L70	5'	0	83	2.1'	2.1'	2'	2.8'	54	2.9'	2.4'	2'	3.4'	67	3.9'	1.6'	2'	2'	185	1.7'	1.1'
			6'	0	57	2.5'	2.5'	3'	3.4'	37	3.4'	2.9'	3'	5.1'	29	5.8'	2.5'	3'	3'	80	2.6'	1.7'
			7'	0	42	2.9'	2.9'	4'	4'	27	4'	4.4'	4'	6.9'	16.4	7.8'	3.3'	4'	4'	53	3.5'	2.3'
			8'	0	32	3.4'	3.4'	5'	4.5'	21	4.6'	3.9'	5'	8.5'	11	9.8'	4.2'	5'	5'	28	4.4'	3'
	796 cd	50,000 L70	5'	0	29	3.2'	3.2'	2'	2.8'	19	4.4'	3.7'	2'	3.4'	23	7.5'	2.5'	2'	2'	64	2.8'	1.8'
			6'	0	20	3.8'	3.8'	3'	3.4'	13	5.3'	4.4'	3'	5.3'	10	11.3'	3.8'	3'	3'	28	4.3'	2.7'
			7'	0	15	4.5'	4.5'	4'	4'	9	6.2'	5.2'	4'	6.9'	6	15.3'	5.3'	4'	4'	19	5.7'	3.6'
			8'	0	11	5.3'	5.3'	5'	4.5'	7	7.3'	6'	5'	8.5'	4	19'	6.5'	5'	5'	10	4.9'	4.5'
	446 cd	50,000 L70	5'	0	16	5.7'	5.7'	2'	2.8'	11	8.5'	6.6'	2'	3.4'	13		4.5'	2'	2'	36	6.9'	3.4'
			6'	0	11	6.9'	6.9'	3'	3.4'	7	10.3'	7.9'	3'	5.3'	6		6.9'	3'	3'	16	10.3'	4.8'
			7'	0	8	8'	8'	4'	4'	5	12'	9.3'	4'	6.9'	3		9.2'	4'	4'	11	13.8'	6.5'
			8'	0	6	9.7'	9.7'	5'	4.5'	4	13.8'	10.6'	5'	8.5'	2		11.5'	5'	5'	6	17'	8'

