



# STENCIL PENDANT

Playful Modular Lighting System



Fall 2017 Expansion

# Stencil

## An evolution in design freedom

Inspired by the **Bauhaus**, Stencil combines today's most desirable lighting attributes: simplicity, functionality, repeatability, scalability and affordability.

With Stencil, small streamlined forms, powerful **SurroundLite™** illumination and unprecedented design flexibility come together in creative new ways.

Discover the **Art of Stenciling**, page 7.





**Direct**

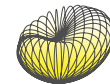


Micro Lens

**Indirect**



SurroundLite  
SurroundLite Asy.



 **Integral Mini-Driver**

Stencil's 0-10V dimmable integral LED mini-driver simplifies specification and installation, and requires fewer power drops.

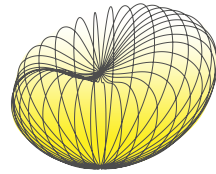
**Hub**

**Accent**



**Micro Louver**





# Patent-Pending Mini SurroundLite™

## The lighting power of a fixture four times its size

An exclusive Axis innovation, Mini SurroundLite delivers a wide 3D distribution and balanced brightness, providing added design freedom and enabling the use of fewer and more widely spaced Stencil segments.

Also, Mini SurroundLite technology maintains lighting uniformity in a space when alternating between direct and indirect Stencil segments (using Hubs).





### Alternating direct and indirect segments

Stencil segments: 4'

Average light levels: 37.5 fc

Max/Min: 2.72

Power density: 0.505 W/ft<sup>2</sup>

Room dimensions: 31' x 80' x 10'

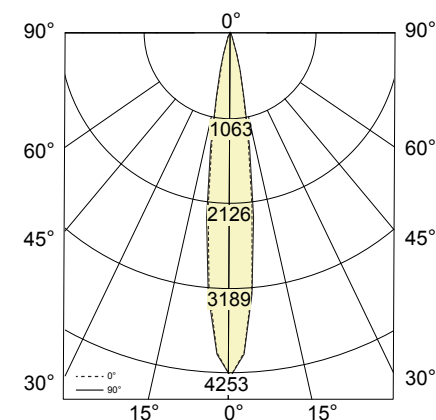




## Stencil Accents

# Layers of light provide added visual interest

- ✓ 450 lm nominal (4253 cd at 20°)
- ✓ 3000K
- ✓ 359° rotation, 90° tilt
- ✓ Choice of 20° or 36° beam spreads
- ✓ Fully dimmable to 5% (integral 0-10V driver)
- ✓ Flexible accent spacing to meet specification requirements
- ✓ Compatible with Stencil indirect lighting segments and powered blank segments
- ✓ Can be located anywhere along the lighting segment





LIGHT.  
YOUR  
WAY.







# The Art of Stenciling

Stencil brings together **lighting segments** and connectors called **Hubs**, the **building blocks** for creating forms and patterns of all sizes. These lighting tools allow you to design highly original lighting layouts without the high-end price tag.

# Stencil Hexagon



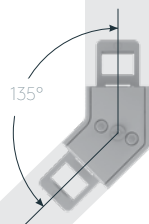
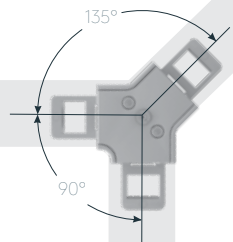
Hex Hub (120°)  
AH



Y Hub (120°)  
AY



# Stencil Octagon



Y Hub (135°)  
AYB

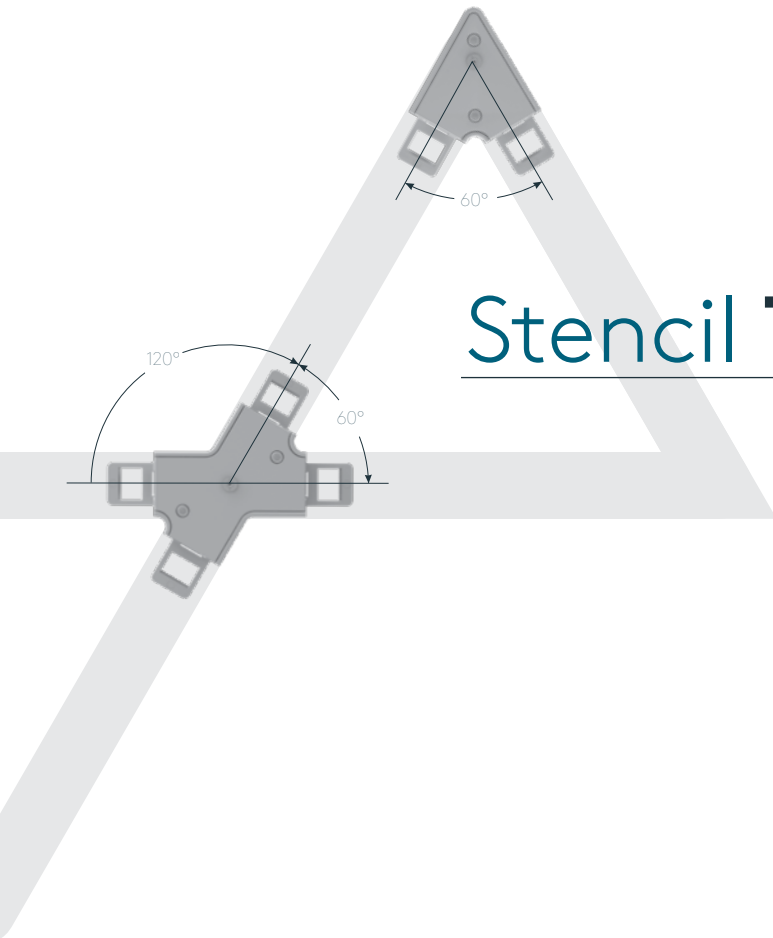


Octagon Hub (135°)  
AG





# Stencil Triangle



X Hub (120°)  
BX



Triangle Hub (60°)  
BT







# Stencil Diamond

With Accents



X Hub (120°)  
BX



Hex Hub (120°)  
BH



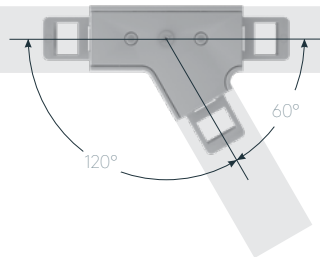
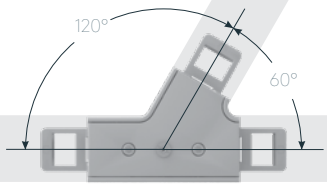
Triangle Hub (60°)  
BT





# Stencil Branches

Organic Forms with Accents



Negative Y Hub (60°/120°)

BYN



Positive Y Hub (60°/120°)

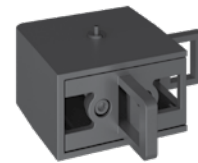
BYP





# Stencil Spatial

With Accents



L Hub Horizontal (90°)

SLH



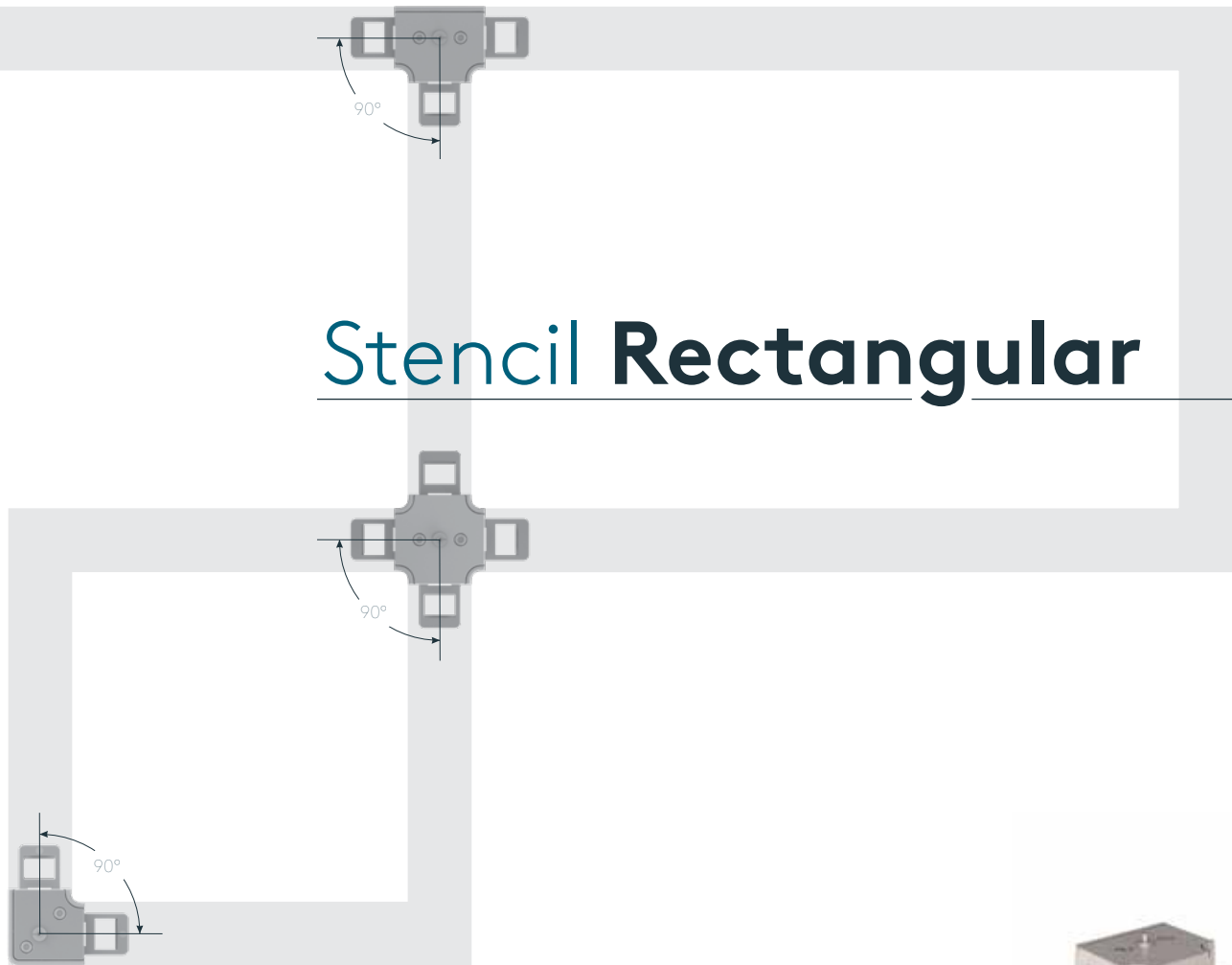
L Hub Vertical (90°)

SLV





# Stencil Rectangular



T Hub (90°)  
AT

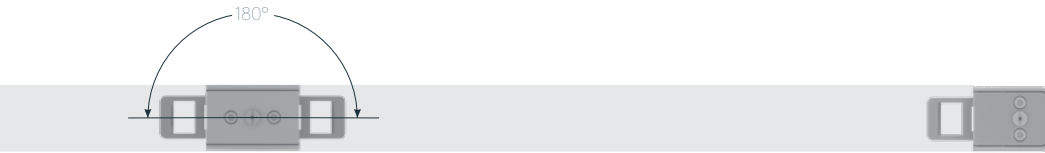


L Hub (90°)  
AL



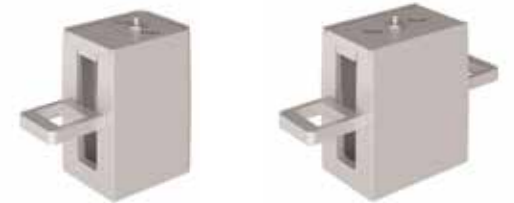
X Hub (90°)  
AX





## Stencil Linear

---



Hub end cap

Inline Hub (180°)

AI

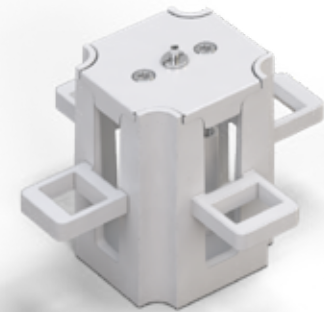
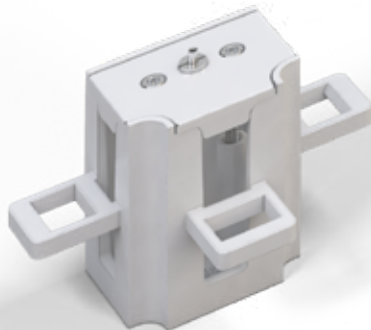
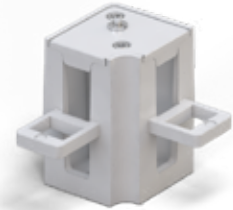
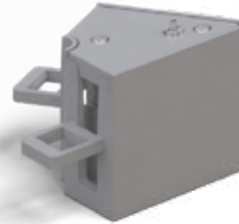


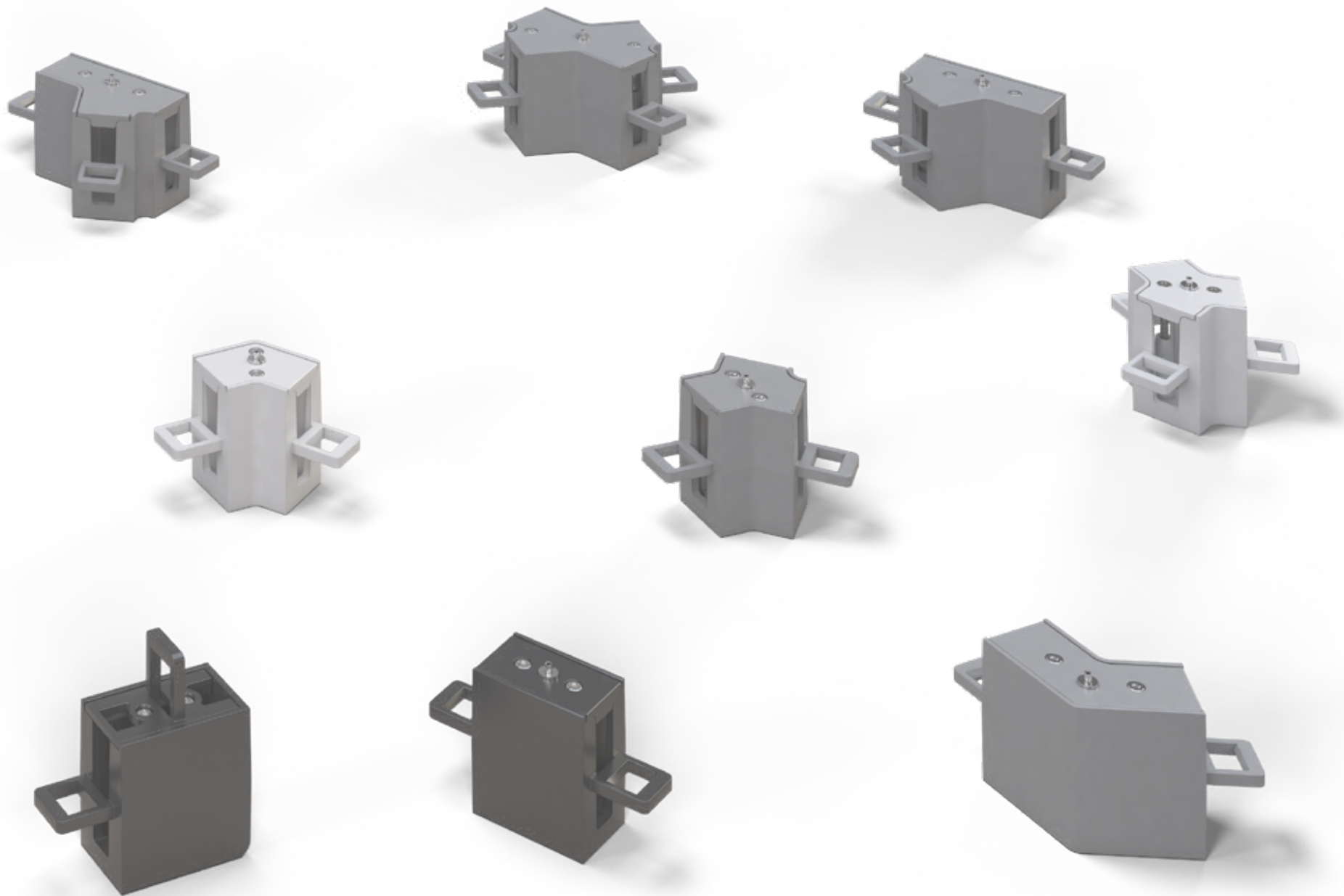


# Stencil Hubs

## The key to Stencil's lighting design flexibility

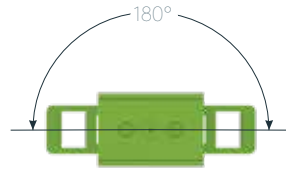
- ✓ Die-cast patent-pending non-illuminated soft corner joiners
- ✓ Combination of mechanical, electrical and suspension functions
- ✓ Easy to install with single captive spring-loaded screw mechanism
- ✓ Ideal for branching off to bring light where you need it





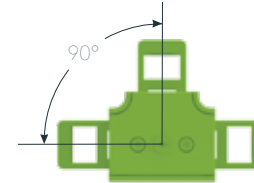


Hub end cap



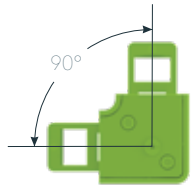
Inline Hub (180°)

AI



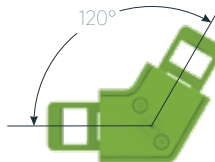
T Hub (90°)

AT



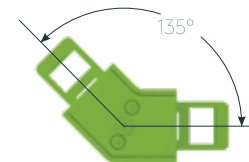
L Hub (90°)

AL



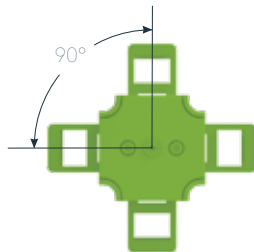
Hex Hub (120°)

AH



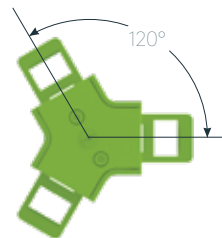
Octagon Hub (135°)

AG



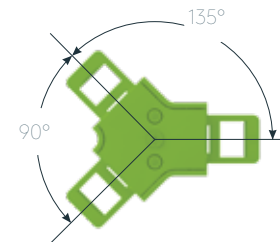
X Hub (90°)

AX



Y Hub (120°)

AY



Y Hub (135°)

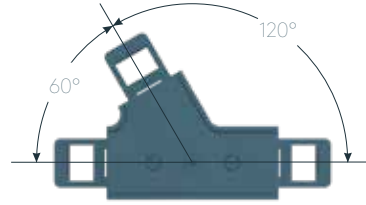
AYB



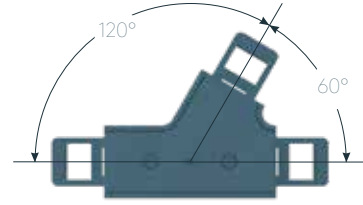
## Series A

Consult factory if combining Series A and B in a closed design.

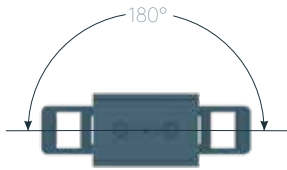




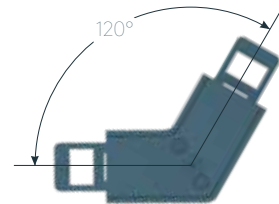
**Positive Y Hub (60°/120°)**  
BYP



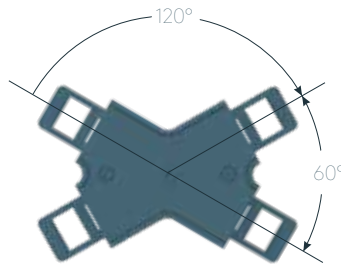
**Negative Y Hub (60°/120°)**  
BYN



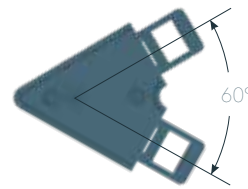
**Inline Hub (180°)**  
AI



**Hex Hub (120°)**  
BH



**X Hub (120°)**  
BX



**Triangle Hub (60°)**  
BT



**Hub end cap**



## Series B

Consult factory if combining Series A and B in a closed design.



**L Hub  
Vertical (90°)**  
SLV



**L Hub  
Horizontal (90°)**  
SLH

### Spatial L Hubs

Use the Spatial L Hubs to create 3D light forms and rotate segments, adding a new dimension to the space.



## Series S

# Stencil Segments

## **Combine segments and Hubs to build unique lighting forms**

- ✓ Up to 600 lm/ft (direct) and 1000 lm/ft (indirect)
- ✓ New direct batwing distribution available
- ✓ Available lengths: 2' to 8' in one-foot increments
- ✓ Up to 200' of continuous light from a single power drop

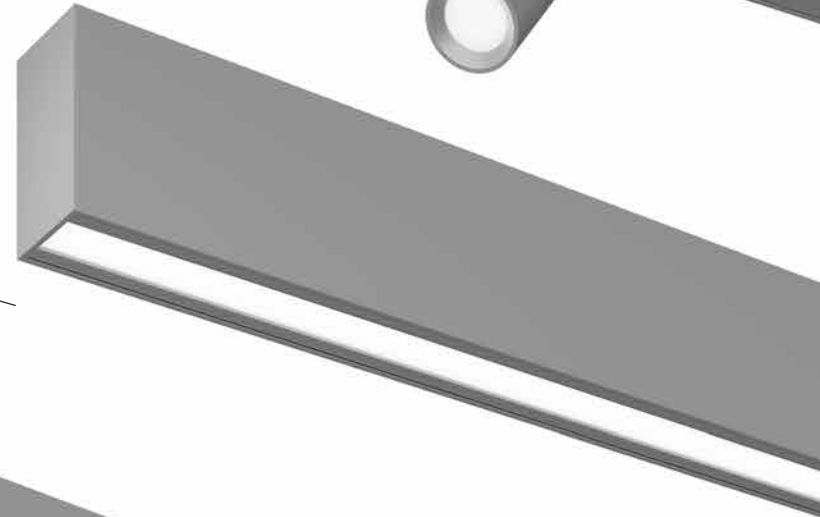
### **Blank Segments**

Use powered and non-powered blank segments (without lighting capabilities) to create a power bridge or maintain esthetic continuity. Available in any length up to 8'.

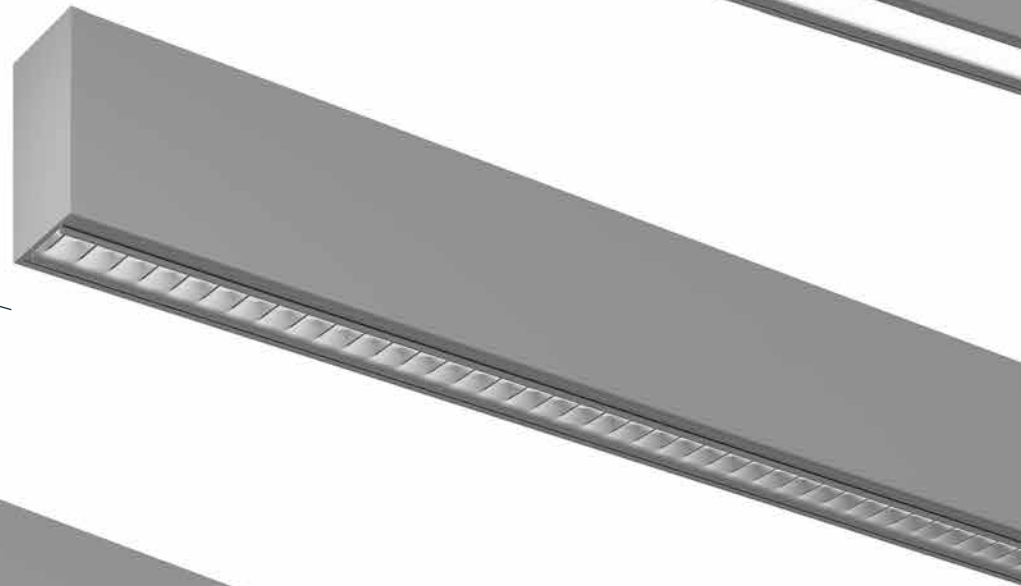
**Accent**



**Direct  
with Lens**



**Direct  
with Micro  
Louver**



**Indirect  
or Blank**



# Stencil Linear

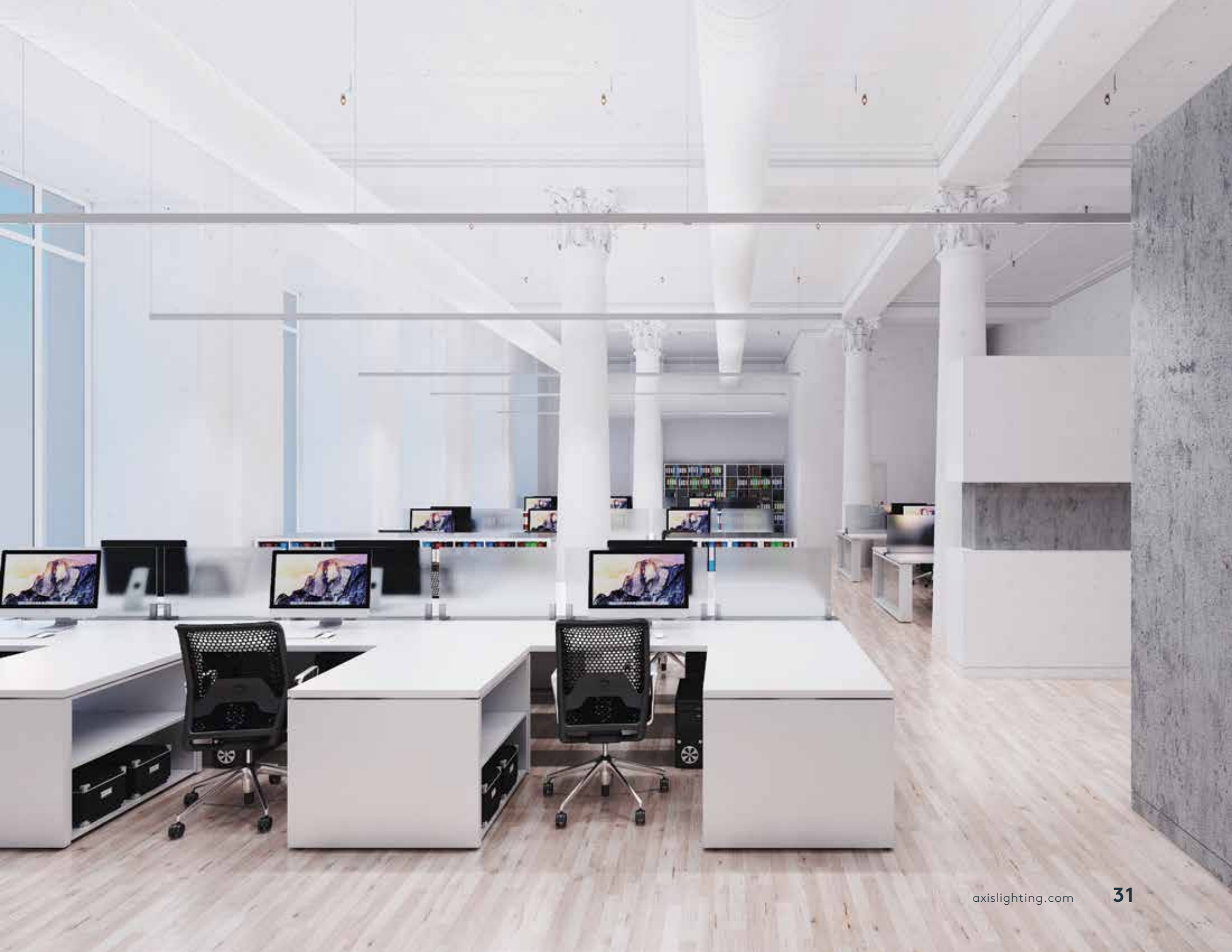


Inline Hubs can be used to create non-continuous lines of light that alternate between direct and indirect lighting segments. Symmetry is maintained with a **Hub end cap**.



Create continuous lines of direct or indirect light with a **flat end cap**.





# The space is your playground

Imagine all you can do with Stencil.  
Get inspired and discover Stencil in more detail.

**Consult spec sheets at  
[axislighting.com/stencil](https://axislighting.com/stencil)**













## About Axis Lighting

Founded in 1991 and still family owned and managed, Axis is an important source for architectural lighting across North America and around the globe.

Over the last decade, the company has exhibited remarkable growth thanks to its commitment to Design Flexibility, Optimal Energy Efficiency and Responsive Customer Care. That leadership effort now extends to developing Innovative Lighting Technologies, such as SurroundLite™, on an ongoing basis.

On the strength of a broad and expanding product line, Axis has successfully completed lighting projects for high-profile clients including Apple, Chrysler, The Empire State Building, Google, Hyundai, Time Warner and McGill University, among many others.

Axis has the drive and the expertise to meet your needs and provide architectural lighting... your way.



Architectural Lighting. Your Way.

We reserve the right to change specifications without notice.  
Please consult our website for the most current technical information  
and to locate your nearest Axis representative.

1.800.263.AXIS  
[T] 514.948.6272  
[F] 514.948.6271

[axislighting.com](http://axislighting.com)

© 2018 Axis Lighting Inc. **SECOND REPRINT**