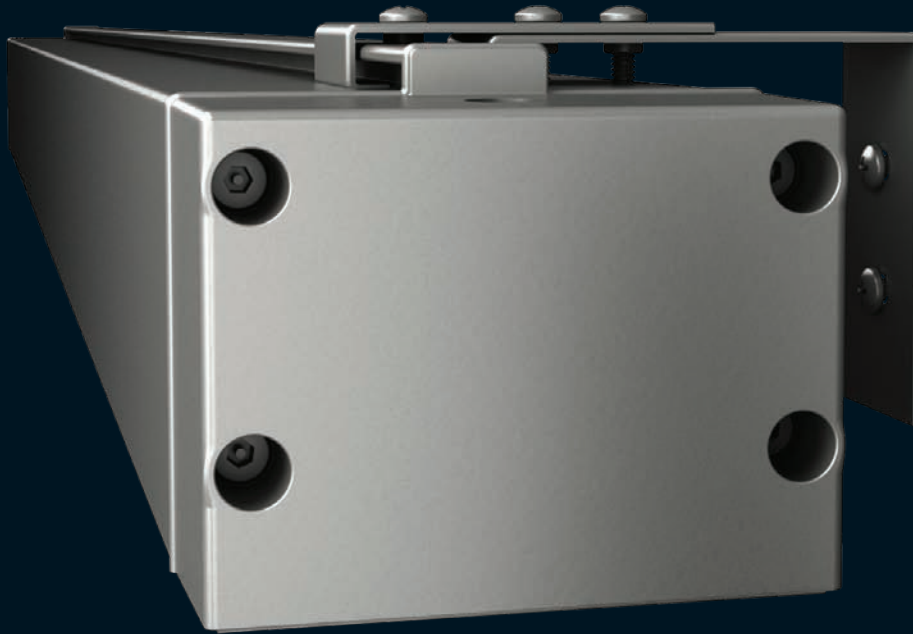
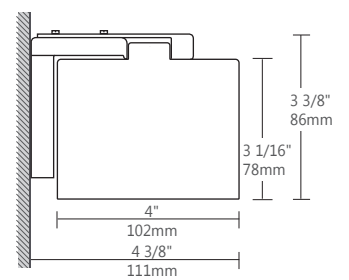
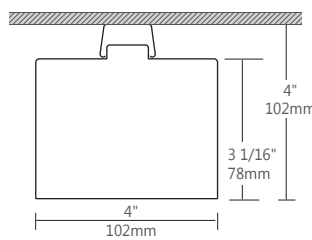
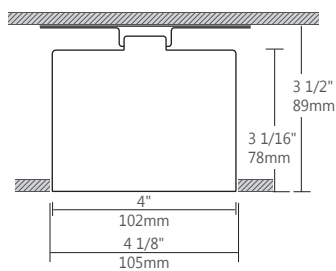
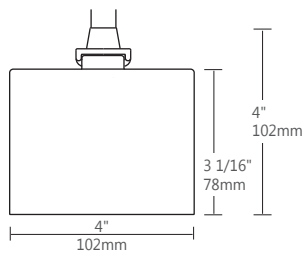


WET BEAM4 LED



DIMENSIONS



PENDANT

RECESSED

SURFACE

WALL



Wet Beam brought a sleek and compact Beam luminaire for wet locations to the market. It suits both indoor spaces such as bathrooms, spas, and indoor parking garages as well as outdoor spaces such as under-canopy installations. Like its fluorescent counterpart, the LED version of the Wet Beam complements the Beam LED family. It allows for applications such as the continuation of indoor lines of light in the ceiling to the under-canopy outdoors to maintain a consistent appearance throughout the space.

Maintenance requirements for Wet Beam LED are very low and it allows for significant energy savings. Color rendering with Wet Beam LED is very good and, unlike with fluorescent HID or HPS luminaires, it provides white light under any ambient temperature, allowing notably occupants to feel safer.

MAIN PRODUCT SPECIFICATIONS

1	PRODUCT ID	2	VERSION	3	NOM. LUMENS/FT	4	COLOUR TEMP.	5	SHIELDING						
WBLED	pendant led	B1	B1 (factory preset)	500	500 lm/ft	35	3500 k	F	frosted lens						
WBSLED	surface led									700	700 lm/ft	30	3000 k	S	satin lens
WBWLED	wall led														
WBRLED	recessed led														

6	LENGTH/FT	7	FINISH	8	VOLTAGE	9	DRIVER						
2	2'	AP	aluminum paint	120	120V	D	dimming						
3	3'							W	white	277	277V	LT	lutron
4	4'												
5	5'												
8	8'												
S#	System Run												



For complete luminaire specification sheets, please visit our web site at www.axislighting.com

MOUNTING OPTIONS



PENDANT



RECESSED



SURFACE



WALL

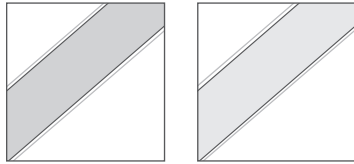
WET BEAM4 LED

PERFORMANCE AT 3500K

NOMINAL LUMEN OUTPUT	INPUT WATTS*	EFFICACY
500 lm/ft	6.6w/ft	76 lm/w
750 lm/ft	10.25w/ft	73 lm/w
900 lm/ft	12.8w/ft	70 lm/w

* Based on a 11" luminaire using one driver
Please consult factory for custom lumen output and wattage.

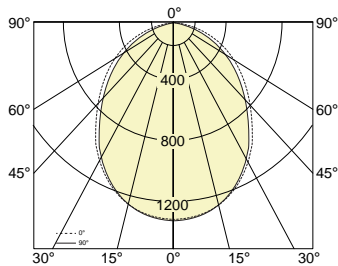
OPTICS OPTIONS



S satin lens

F frosted lens

PHOTOMETRICS

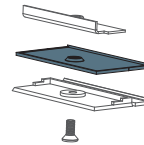
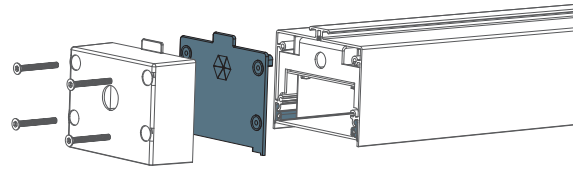


Wet Beam4 LED Direct
Luminaire Lumens: 2999 lm
Input Watts: 10.25 w
Efficacy: 74.9 lm/w
 IES FILE: WBLED-B1-750-35.IES

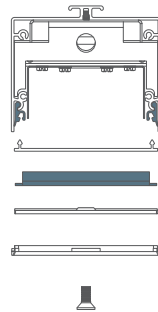
i All LED-related data in this document is valid as of Jan. 2013
 Given the fast pace of LED developments, up-to-date LED info
 is available on our website
 at www.axislighting.com.

GASKETED END CAP

With its gasketed end cap and lens the Wet Beam is made for wet locations, it is ideal for exterior soffits and canopies of malls, hospitals and other institutions.



LENS SIDE VIEW



GASKETED END CAP

CONSTRUCTION

Housing	Extruded Aluminum (0.062" nominal) Up to 70% Recycled Content
End Cap	Die Cast Zinc (0.070" nominal)
Interior Brackets	Die Formed Sheet Steel (16 ga)
Gaskets	Moulded Elastomer (0.100" nominal)
Lens Gaskets	Extruded Elastomer (0.045" nominal)
Frosted Lens	Frosted Acrylic 68% transmissive

ELECTRICAL

LED Use of OptimaLED technology based on mid-flux LED

Input Voltage 120V, 277V, UNV.

Driver Dimming, HiLume, EcoSystem, DALI,

CRI Minimum 80 color rendering index

CCT Choice of 3000k, 3500k and 4000k color temperature with a great color consistency (within 3.5-step MacAdam ellipse).

LED life Minimum 50,000h with 70% of lumen maintenance in 25°C ambient temperature, in compliance with IES LM-80 testing measurements.

Thermal management

Aluminium housing acting as the heat spreader to maximize life.

Emergency

Emergency battery pack or emergency circuit optional.

