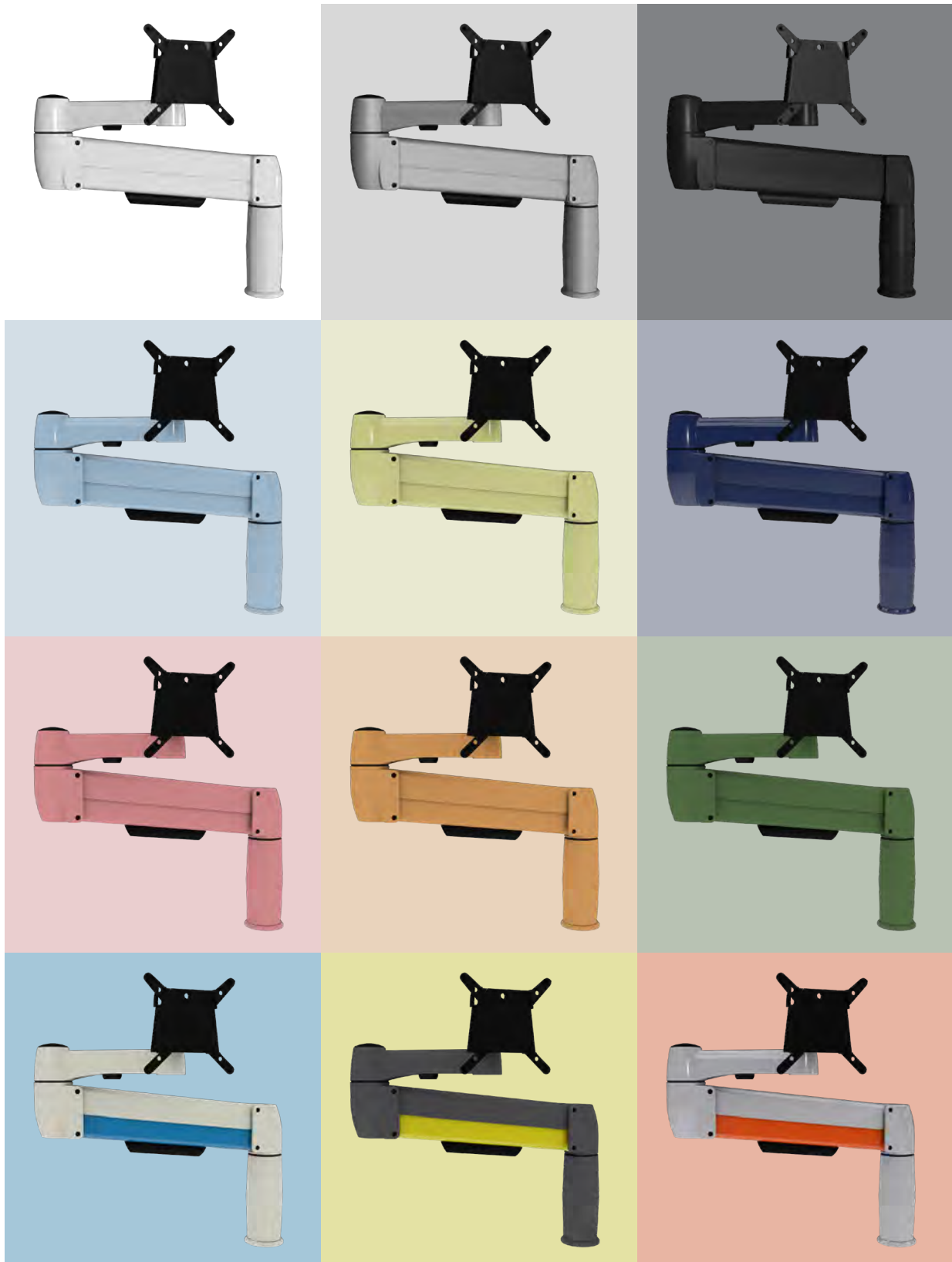




# SpaceArm

Unlimited possibilities...



# SpaceArm



Introducing a space saving monitor arm that promotes ergonomic benefits.



## What makes the SpaceArm unique?

Using monitor arms to position your screens correctly are a great way to promote productivity, well-being, improve back and neck posture and reduce eye strain, whether you're sitting or standing at your desk. Adapt's SpaceArm monitor arm has a unique gas-lift system that makes it one of the strongest, most durable monitor arms on the market.

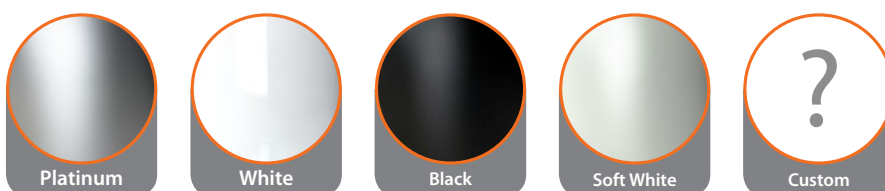
### Key features:

- Unique gas-lift system, providing ultimate stability
- Superior performance, allowing upgrades to double, triple and quadruple arms
- Fully adjustable, ideal for 'hot desking' and agile working
- Monitor swapping is quick and easy
- Saves valuable desk space
- Numerous mounting options
- Anti-theft features

### Key benefits:

- Enhances productivity and efficiency
- Improves back and neck posture
- Reduces eye strain
- Freedom to maneuver monitor to your ergonomic requirement
- Strong and sturdy, can accommodate monitors up to 13kg

### Color options:



These are our standard color options, we can also customize most of our monitor arms to the color of your choice. Please speak to your Adapt representative for further information.\*

\*Minimum order quantities or additional costs and lead times may apply.

# SpaceArm accessories



The following accessories are quick and easy to attach to the SpaceArm, allowing you to adapt your desk to suit your specific requirements. Whether you work from a PC or laptop, these mountings offer complete control over how you position your monitors.



## Laptop Platform

- Ideal for the sales team, 'hot desking' and agile working
- Stores laptop off desk surface, maximizing on space



## Multi-Mount

- Keeps multiple monitors precisely aligned
- Various arm and mount configurations
- Anti-theft feature



## Multi-Flex

- Offers complete control over lateral monitor positioning
- Ideal for wide screens, as mounting hubs move along a rail
- Multiple mounting hubs can be added
- Supplied at bespoke lengths
- Bolt through version available

# Thin Client Holder



The Thin Client Holder is an ideal option for offices where space is at a premium. It lifts the PC from the desk, freeing up valuable work surface space and helps to keep the office tidy. It is available with two mount options, the VESA Mount and the Base Mount.



## VESA Mount Thin Client Holder

- Cables pass freely through the VESA mounted holder and monitor arm
- CPU holder is fixed in one secure position
- Extremely lightweight
- Saves valuable desk space
- PC is raised from the floor for maximum protection
- Does not restrict monitor arm movement



## Base Mount Thin Client Holder

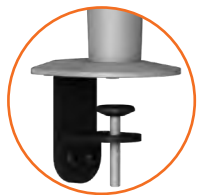
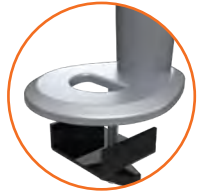
- Allows easy access to a PC
- Flexibility to rotate CPU Holder around the monitor arm
- Saves valuable desk space
- Does not restrict monitor arm movement
- Optional security straps reduce the risk of damage to your PC

Please ask your Adapt representative for further information on our full range of CPU holders.

# Mount-to-surface options



Name	Description
Bolt Through	Secure and subtle, the Bolt Through is fixed through the desktop.
Grommet Mount	Provides hole for cable management (hole must be cut out from desk).
C-Clamp	Clamps on without the need to remove or screw through the desktop, allowing quick mounting. Suitable for desktops up to 69mm thick.
Large C-Clamp	Wider base above desk gives improved balance for heavy duty setups.
Above Desk Clamp	Low profile under desk allows for sliding desktops.



Name	Description
SpaceBeam I Mount	Quick and easy to mount and simple to reposition monitor arm.
SpaceBeam II Mount	Screw fixed clamping system for greater stability.
Wall Mount	Versatile wall mounting plate for multiple uses when desk area is limited.



## Environmental design

At Adapt we carefully consider environmental factors in every stage of our product cycle. This includes selecting environmentally friendly materials during design, manufacturing, packaging and shipping.



## Adapt aftercare

Research shows that to achieve the full benefits from ergonomic products, employees should be trained to use them properly. As part of our service, training is available to ensure you make the most of your furniture and accessories.



## Superior products

Every Adapt product is made from the highest quality materials and goes through rigorous testing before it becomes available on the market. That's why all Adapt manufactured products come with a lifetime guarantee, giving you peace of mind.



Adapt USA  
17650 E. 32nd Place  
Suite 10a  
Aurora, CO 80011



+1 303 371 6222



infousa@adaptergonomics.com



www.adaptergonomics.com