

USG ENSEMBLE™ ACOUSTICAL DRYWALL CEILING—SUSPENDED SYSTEM

SEAMLESS APPEARANCE WITH EXCELLENT ACOUSTIC PERFORMANCE



TO ORDER SAMPLES, GO TO USG.COM OR CGCINC.COM

STANDARD COLOR



Flat White
050

CUSTOM COLOR



Unlimited
Color Options

FEATURES AND BENEFITS

- Monolithic appearance with fine finish in standard white and custom colors
- System installed on economical, suspended USG Drywall T-Bar grid
- Perforated USG Sheetrock® Brand Ensemble™ Four-Sided Taper Panels, USG High-NRC Backer Panels and acoustically transparent USG Ensemble™ Spray-Applied Finish optimize sound absorption - NRC 0.80, CAC 40 (with 1" backer panel)
- Installs and finishes using traditional drywall techniques and USG Ensemble Spray-Applied Finish
- Up to 50 % lower installed cost versus acoustical plaster systems
- Backed by USG's advanced design and engineering, certified installer and sales support network, and full system warranty

APPLICATIONS

- | | | |
|--------------|-------------------------------------|-----------------------------------|
| • Lobbies | • Performing arts spaces | • Classrooms/
higher education |
| • Atria | • Corporate interiors | • Hospitality |
| • Concourses | • Board rooms/
executive offices | • Restaurants |
| • Museums | | |



USG ENSEMBLE™ ACOUSTICAL DRYWALL CEILING—SUSPENDED SYSTEM

ORDER SAMPLES/LITERATURE
USG: samplifit@usg.com
fax: 888 874-2348 | usg.com
CGC: contact Sales Representative

TECHNICAL SERVICES
800 USG.4YOU (874-4968)

TECHNICAL INFORMATION
usg.com/ensemble

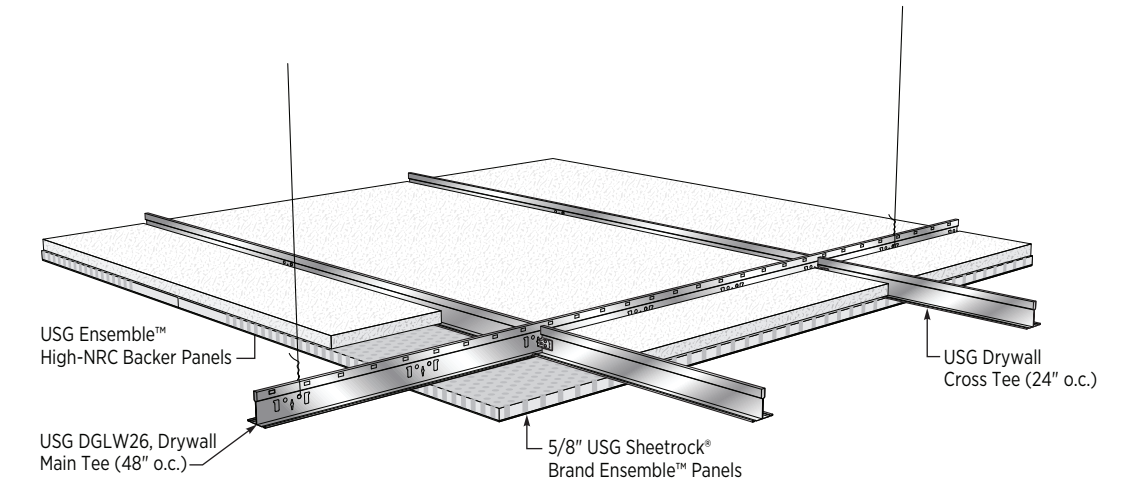
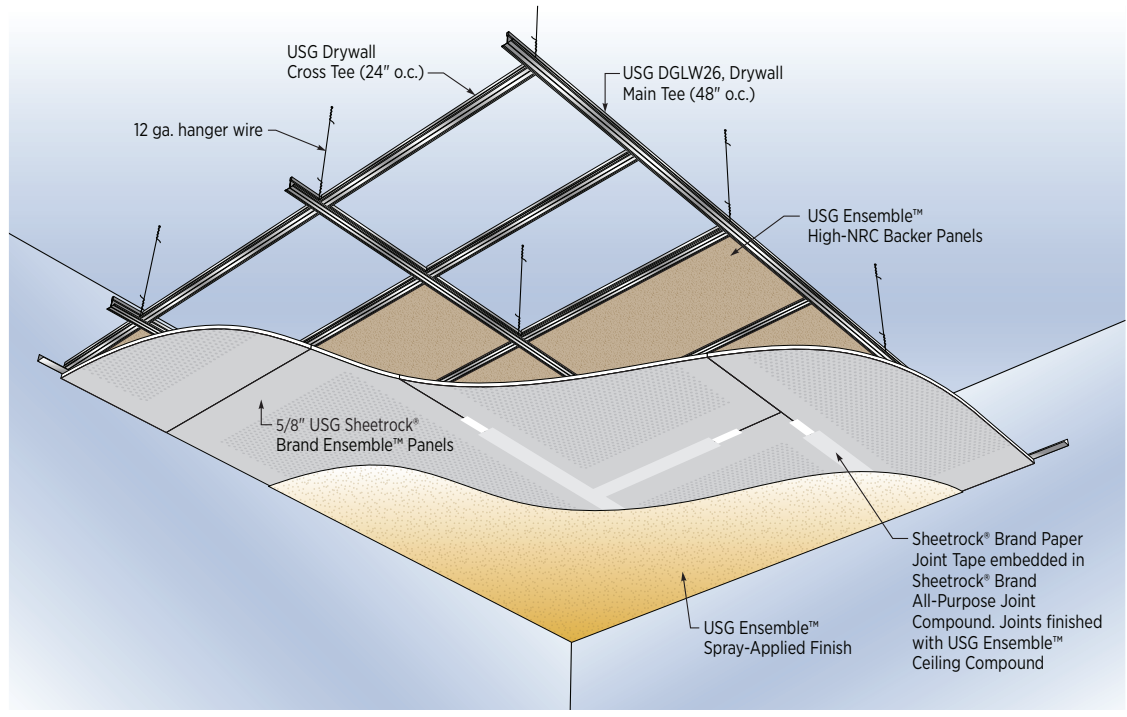


Declare.

SYSTEM DETAILS

USG Ensemble™ installed on suspended USG Drywall T-Bar System

Using USG's economical and proven drywall T-Bar Grid as the primary framing system, the USG Ensemble™ system offers a sophisticated seamless appearance with excellent sound absorption. The USG Ensemble High-NRC Backer Panels are screw-attached to the bottom of the T-Bar grid framing members. Joints are finished like conventional drywall and acoustically transparent USG Ensemble™ Spray-Applied Finish is applied to the surface of the final decoration. See USG Ensemble™ Design Guide for installation details.



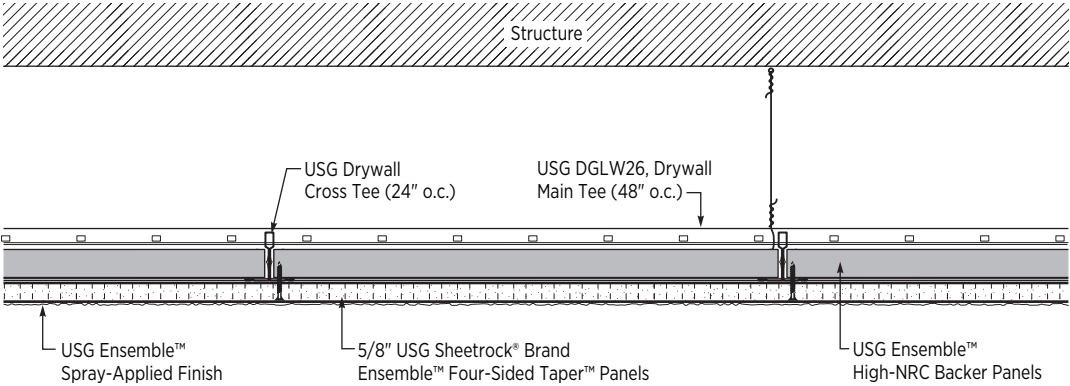
USG ENSEMBLE™ ACOUSTICAL
DRYWALL CEILING—SUSPENDED SYSTEM

ORDER SAMPLES/LITERATURE
USG: samplrt@usg.com
fax: 888 874-2348 | usg.com
CGC: contact Sales Representative

TECHNICAL SERVICES
800 USG.4YOU (874-4968)
TECHNICAL INFORMATION
usg.com/ensemble



SYSTEM DETAILS



PERFORMANCE DATA

Base Panel	Backer Panel	NRC	CAC	LR	Fire Performance
USG Sheetrock® Brand Ensemble™ Four-Sided Taper Panels	1" USG Ensemble™ High-NRC	0.80	40	.85	Class A

SYSTEM COMPONENTS

Products	Item Number	Sizes	Packaging	Quantity	Notes
USG Drywall Suspension Main Tees	DGLW26	12'	16-pc. carton	192 LF/ctn	Main tees 48" o.c.
USG Drywall Suspension Cross Tees	DGLW424	4'	48-pc. carton	192 LF/ctn	Cross tees 24" o.c.
5/8" USG Sheetrock® Brand Ensemble™ Four-Sided Taper Panels	ENSPNL96, ENSPNL120	5/8" x 4' x 8', 5/8" x 4' x 10'	26-pc. unit	8'-832 sq. ft./unit 10'-1040 sq. ft./unit	Gypsum panel highly engineered to perform like an acoustical ceiling panel
1" USG Ensemble™ High-NRC Backer Panels	ENSHINRC	1" x 23.5" x 47.75"	4-pc. unit	31.3 sq. ft./carton	Acoustical base mat for High-NRC/High-CAC
USG Sheetrock® Brand Paper Joint Tape	—	250' roll	20 rolls per carton	5,000 LF/ctn	Specially formulated paper tape
USG Sheetrock® Brand All Purpose Joint Compound	USAPJC	4.5-gal. pail	Single pail 48-pail pallet	216 gal./pallet	Coverage 100 sq. ft./gal. 450 sq. ft./4.5-gal. pail
USG Sheetrock® Brand Ensemble™ Ceiling Compound	ENSCJC	4.5-gal. pail	Single pail 48-pail pallet	216 gal./pallet	Coverage 106 sq. ft./gal. 480 sq. ft./4.5-gal. pail
USG Ensemble™ Spray-Applied Finish, White, Custom Colors	ENSSPRAF	4.5-gal. pail	Single pail 48-pail pallet	216 gal./pallet	Coverage 80-100 sq. ft./4.5-gal. pail

LIMITATIONS

- For interior ceilings only.
- Not for use in areas subject to continuous high-heat and/or humid conditions.
- The Ensemble system shown above not for use in return-air plenums.
For active return-air plenum ceiling, use Ensemble Direct Mount Z-Furring System on a suspended drywall ceiling. See data sheet (SC3237).
- Return air ducts shall be installed according to ASHRAE standards and guidelines.
- Install according to Section 5 Environmental Conditions listed in ASTM C840.
- In order to ensure installed performance, component substitutions should not be permitted.

USG ENSEMBLE™ ACOUSTICAL DRYWALL CEILING—SUSPENDED SYSTEM

ORDER SAMPLES/LITERATURE
USG: samplif@usg.com
fax: 888 874-2348 | usg.com
CGC: contact Sales Representative

TECHNICAL SERVICES
800 USG.4YOU (874-4968)

TECHNICAL INFORMATION
usg.com/ensemble



Declare.

USG ENSEMBLE™ ACOUSTICAL DRYWALL COLOR PROGRAM

Custom Color Matching - Specifier to provide a color number from one of the following:

- Benjamin Moore®
 - Sherwin-Williams®
 - PANTONE®
- Recommended Instructions
1. Request customer color samples through your local USG Ensemble™ sales representative.
 2. Allow three weeks to receive custom color sample.
 3. Once the color sample is approved and the order is placed by the purchaser, allow three weeks for the custom-colored USG Ensemble™ Spray-Applied Finish to ship with the USG Ensemble Acoustical Drywall order.
 4. The USG Ensemble™ Spray-Applied Finish is similar to flat finish paint in sheen. Different sheens are not offered at this time.
 5. Certain very deep tone colors or certain very bright colors may not be possible to match. USG will be able to determine at the time of the custom color sample request.

Design Guide

Download SC5075 at usg.com/ensemble

ASTM E1264 Classification

Type XX – Gypsum, Pattern G

Fire Class A

Weight

Total System weight 3.2 lb/ft²

Maintenance

Download SC5048 at usg.com/ensemble

ASTM E84 and Can/ULC 2102 surface-burning characteristics

Class A

Flame Spread: 25 or less

Smoke developed: 50 or less

PHYSICAL DATA/ FOOTNOTES

Notice

The information in this document is subject to change without notice. CGC Inc. or USG Corp. assumes no responsibility for any errors that may inadvertently appear in this document.

SC2791/rev. 1-20

© 2020 USG Corporation and/or its affiliates. All rights reserved. Printed in USA

Manufactured by
USG Interiors, LLC
550 West Adams Street
Chicago, IL 60661

The trademarks USG, CGC, COMPASSO, DECLARE, ENSEMBLE, SHEETROCK, IT'S YOUR WORLD. BUILD IT., the USG and CGC logos, the design elements and colors, and related marks are trademarks of USG Corporation or its affiliates.

The trademark BENJAMIN MOORE is a registered trademark of Benjamin Moore & Co. The trademark SHERWIN-WILLIAMS is a registered trademark of the The Sherwin-Williams Company. The trademark PANTONE is the property of Pantone LLC.

Safety First! Follow good safety/industrial hygiene practices during installation. Wear appropriate personal protective equipment. Read SDS and literature before specification and installation.

