

USG ENSEMBLE™ ACOUSTICAL DRYWALL CEILING—DIRECT MOUNT SYSTEM

SEAMLESS APPEARANCE WITH EXCELLENT ACOUSTIC PERFORMANCE

TO ORDER SAMPLES, GO TO USG.COM OR CGCINC.COM

STANDARD COLOR



Flat White
050

CUSTOM COLOR



Unlimited
Color Options

FEATURES AND BENEFITS

- Monolithic appearance with fine finish in standard white and custom colors
- Z-Furring framing system enables the USG Ensemble™ ceiling system to be direct mounted to existing ceilings, overhead structures, framing or joists
- Perforated USG Sheetrock® Brand Ensemble™ Four-Sided Taper Panels, USG High-NRC Backer Panels and acoustically transparent USG Ensemble™ Spray-Applied Finish optimize sound absorption in the system; NRC 0.80-0.85 (1" or 2" backer panels)
- Installs and finishes using traditional drywall techniques and USG Ensemble Spray-Applied Finish
- Suitable for active return-air plenums with differential pressure (when direct mounted to suspended drywall ceiling system)
- Backed by USG's design and engineering, certified installer and sales support network and full system warranty

APPLICATIONS

- | | | |
|--------------|-------------------------------------|-----------------------------------|
| • Lobbies | • Performing arts spaces | • Classrooms/
higher education |
| • Atria | • Corporate interiors | • Hospitality |
| • Concourses | • Board rooms/
executive offices | • Restaurants |
| • Museums | | |

USG ENSEMBLE™ ACOUSTICAL DRYWALL CEILING—DIRECT MOUNT SYSTEM

ORDER SAMPLES/LITERATURE
USG: samplif@usg.com
fax: 888.874.2348 | usg.com
CGC: contact Sales Representative

TECHNICAL SERVICES
800 USG.4YOU (874-4968)
TECHNICAL INFORMATION
usg.com/ensemble

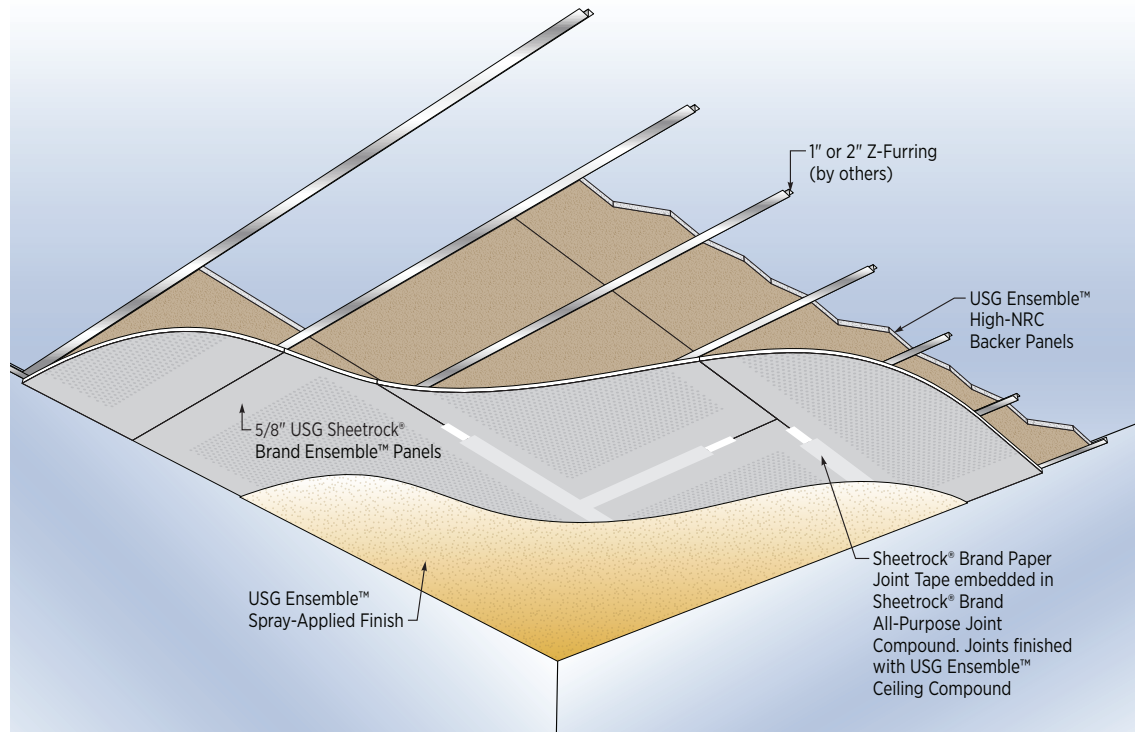
SYSTEM DETAILS



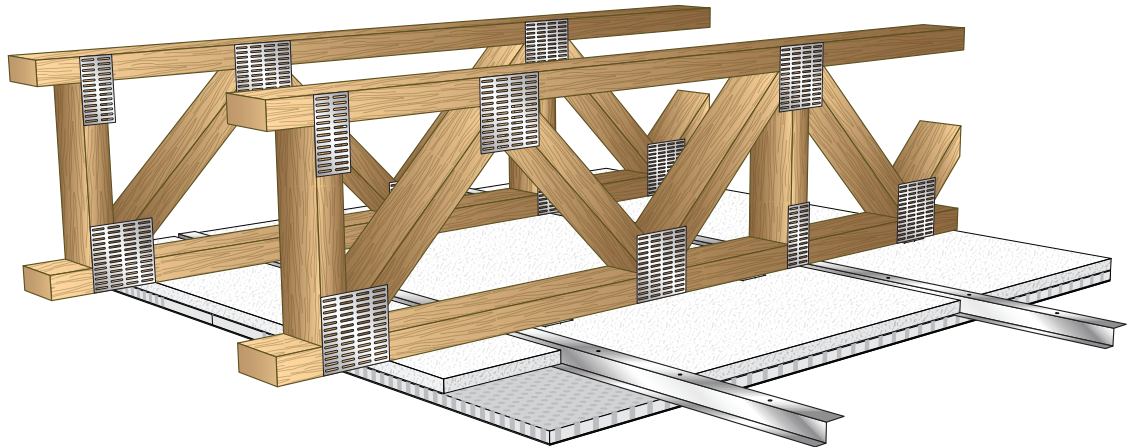
Declare.

USG Ensemble™ Ceiling - Direct Mount Z-Furring

Using readily available 1" or 2" Z-Furring (by others), USG Ensemble™ can be direct mounted to an existing ceiling substrate/system or overhead structures, framing or joists. Z-Furring is attached with fasteners and supports one side of the USG Ensemble™ High-NRC Backer Panel. The other side is held in place by Installation Impaling Clips (by others). Then the highly engineered, acoustically perforated USG Sheetrock® Brand Ensemble™ Four-Sided Taper Panels are screw-attached to the bottom of the Z-Furring framing members. Joints are finished like conventional drywall and then acoustically transparent finish coatings are spray-applied to the surface as the final decoration. See USG Ensemble™ Design Guide for installation details.



USG Sheetrock® Brand Ensemble™ Four-Sided Taper Panels back-loaded with USG 1" or 2" USG Ensemble™ High-NRC Backer Panels. The Z-Furring is attached to open web wood floor joists or other overhead structure.



USG ENSEMBLE™ ACOUSTICAL DRYWALL CEILING—DIRECT MOUNT SYSTEM

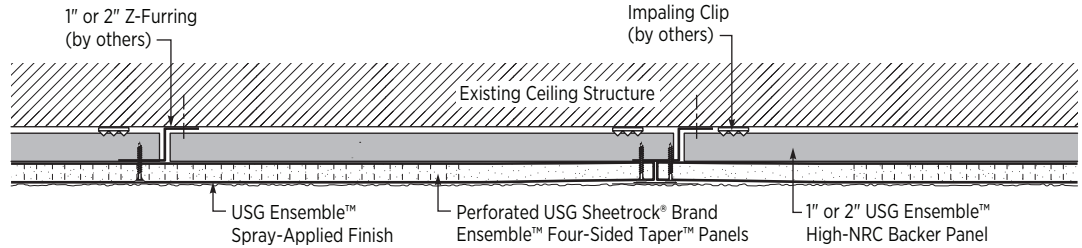
ORDER SAMPLES/LITERATURE
USG: samplif@usg.com
fax: 888 874-2348 | usg.com
CGC: contact Sales Representative

TECHNICAL SERVICES
800 USG.4YOU (874-4968)

TECHNICAL INFORMATION
usg.com/ensemble



Declare.



PERFORMANCE DATA

Base Panel	Furring	Backer Panel	NRC	LR	Fire Performance
5/8" USG Sheetrock® Brand Ensemble™ Four-Sided Taper Panels	1" Z	1" USG Ensemble™ High-NRC	0.80	.85	Class A
	2" Z	2" USG Ensemble™ High-NRC	0.85	.85	Class A

**Ensemble Direct Mount may be added to fire-resistance-rated ceilings without adversely affecting the fire resistance of the assembly. Ensemble Direct Mount shall be properly fastened to framing, and considerations shall be given to the load-carrying capacity of the framing system.

SYSTEM COMPONENTS

*Refer to Z-Furring and Impaling Clip manufacturer's literature.

Products	Item Number	Sizes	Packaging	Quantity	Notes
1" or 2" 20 ga. Z-Furring* (by others)	—	—	—	—	24" o.c. framing
Insulation Impaling Clip* (by others)	—	—	—	—	One clip for each backer panel
5/8" USG Sheetrock® Brand Ensemble™ Four-Sided Taper Panels	ENSPNL96, ENSPNL120	5/8" x 4' x 8', 5/8" x 4' x 10'	26-pc. unit	8'-832 sq. ft./unit 10'-1040 sq. ft./unit	Gypsum panel highly engineered to perform like an acoustical ceiling panel
1" or 2" USG Ensemble™ High-NRC Backer Panels	ENSHINRC, ENSH2NRC	1" x 23.5" x 47.75", 2" x 23.5" x 48"	4-pc. unit	31.3 sq. ft./carton	Acoustical base mat for High-NRC/High-CAC
USG Sheetrock® Brand Paper Joint Tape	—	250' roll	20 rolls per carton	5,000 LF/ctn	Specially formulated paper tape
USG Sheetrock® Brand All Purpose Joint Compound	USAPJC	4.5-gal. pail	Single pail 48-pail pallet	216 gal./pallet	Coverage 100 sq. ft./gal. 450 sq. ft./4.5-gal. pail
USG Sheetrock® Brand Ensemble™ Ceiling Compound	ENSCJC	4.5-gal. pail	Single pail 48-pail pallet	216 gal./pallet	Coverage 106 sq. ft./gal. 480 sq. ft./4.5-gal. pail
USG Ensemble™ Spray-Applied Finish, White, Custom Colors	ENSSPRAF	4.5-gal. pail	Single pail 48-pail pallet	216 gal./pallet	Coverage 80-100 sq. ft./4.5-gal. pail

LIMITATIONS

- For interior ceilings only.
- Not for use in areas subject to continuous high heat and/or humid conditions.
- Suitable for return-air ceiling plenum with differential pressure when direct mounted to drywall ceiling system.
- Install according to Section 5 Environmental Conditions listed in ASTM C840.
- In order to ensure installed performance, component substitutions should not be permitted.
- Can be mounted to fire-rated ceiling compatible with 120 UL designs (see USG Fire-Resistant Assemblies SA-100).

USG ENSEMBLE™ ACOUSTICAL DRYWALL CEILING—DIRECT MOUNT SYSTEM

ORDER SAMPLES/LITERATURE
USG: samplif@usg.com
fax: 888 874-2348 | usg.com
CGC: contact Sales Representative

TECHNICAL SERVICES
800 USG.4YOU (874-4968)

TECHNICAL INFORMATION
usg.com/ensemble



Declare.

USG ENSEMBLE™ ACOUSTICAL DRYWALL COLOR PROGRAM

The USG Ensemble™ Acoustical Drywall Ceiling and Wall systems are available in white and by custom color matching through the following companies:

- Benjamin Moore®
 - Sherwin-Williams®
 - PANTONE®
- How the program works:
1. Request customer color samples through your local USG Ensemble™ sales representative.
 2. Allow three weeks to receive custom color sample.
 3. Once the color sample is approved and the order is placed by the purchaser, allow three weeks for the custom-colored USG Ensemble™ Spray-Applied Finish to ship with the USG Ensemble™ acoustical drywall order.
 4. The USG Ensemble™ Spray-Applied Finish is similar to flat finish paint in sheen. Different sheens are not offered at this time.
 5. Certain very deep tone colors or certain very bright colors may not be possible to match. USG will be able to determine at the time of the custom color sample request.



PHYSICAL DATA/ FOOTNOTES

Design Guide

Download SC5075 at usg.com/ensemble

ASTM E1264 Classification

Type XX – Gypsum, Pattern G
Fire Class A

Weight

Total System weight 3.2 lb/ft²

Maintenance

Download SC5048 at usg.com/ensemble

ASTM E84 and Can/ULC 2102 surface-burning characteristics

Class A
Flame Spread: 25 or less
Smoke developed: 50 or less

Notice

The information in this document is subject to change without notice. CGC Inc. or USG Corp. assumes no responsibility for any errors that may inadvertently appear in this document.

SC3237/rev. 1-20

© 2020 USG Corporation and/or its affiliates. All rights reserved. Printed in USA

Manufactured by
USG Interiors, LLC
550 West Adams Street
Chicago, IL 60661

The trademarks USG, CGC, COMPASSO, DECLARE, ENSEMBLE, SHEETROCK, TAPER, IT'S YOUR WORLD. BUILD IT., the USG and CGC logos, the design elements and colors, and related marks are trademarks of USG Corporation or its affiliates.

The trademark BENJAMIN MOORE is a registered trademark of Benjamin Moore & Co. The trademark SHERWIN-WILLIAMS is a registered trademark of the The Sherwin-Williams Company. The trademark PANTONE is the property of Pantone LLC.

Safety First! Follow good safety/industrial hygiene practices during installation. Wear appropriate personal protective equipment. Read SDS and literature before specification and installation.

