

STRING GAMES MEETING TABLES | Designed by Madsen & Contois



SPECIFICATIONS:

- Available in two heights: 29" and 42".
- Depth options include: 24", 30" and 36".
- Length sizes include: 60", 72", 84" and 96".
- Tables offered in wood veneer, laminate and solid surface.
- Solid surface available in white only.
- To order a non-standard solid surface color, please specify the manufacturer, pattern name and color number. Please contact client services to confirm pricing.
- **Interior and exterior metal accents are featured as standard.**
- Also offered without interior and exterior metal accents, in various combinations, at no charge. Please refer to specific pages for options.
- Metal accents available in standard and premium finishes. See following page for options.
- For custom metal finish colors, please contact client services for pricing.
- Tables feature black reveal between top edge of panels and table-top.
- When specifying white laminate or solid surface, reveal will be white.
- For tables intended to be placed end-to-end, please select applicable option code without exterior metal accents (-MA0) or with exterior metal accent on single side only. (-MA3)
- Panel bases and underside of tables feature removable panels for wire management accessibility.
- All panel bases feature adjustable glides as standard for leveling purposes.
- Ships KD. Assembly required.
- To ship fully assembled, set-up charge will be \$500 List per unit.
- Optional power units available. Please refer to pages 260-263 for options.
- All dimensions are nominal.
- Refer to terms and conditions for general information regarding finishes, warranty, freight, complete condition of sales and more.

VENEER TABLE FEATURES:

- Three wood species available: Ash, Maple and Walnut.
- For custom wood finishes, please contact client services and add one-time upcharge of \$450 List per color per order.
- Due to natural variations of grain and color in woods, slight variations may occur.
- Veneer direction will run lengthwise on all table sizes.
- Edge finish will match top finish unless specified otherwise.

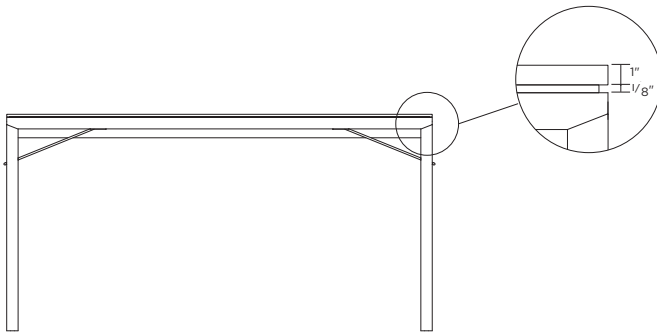
STRING GAMES MEETING TABLES | Designed by Madsen & Contois

LAMINATE TABLE FEATURES:

- Laminate available in all standard colors.
- If white laminate is desired for top and panel bases, it is recommended to utilize Formica 949-58 White Matte with a ColorCore® 2 edge detail in matching 949C-58 White Matte to eliminate the black line that occurs with traditional laminates. Please specify and add \$300 List to the laminate pricing column.
- For custom laminate options, add \$550 List per color per order. Pre-approval required, please contact client services.
- Laminate wood grain direction will run lengthwise on all table sizes.
- Self edge standard, unless otherwise specified (laminate applied to edge).

SOLID SURFACE TABLE FEATURES:

- Solid surface is affixed to table top only (not available on table edges or panel bases). Please note that a 1/8" reveal will be present.
- Solid surface available in white only.
- To order a non-standard solid surface color, please specify the manufacturer, pattern name and color number. Contact client services to confirm pricing.
- Please specify wood or laminate finish for the table interior surface and panel bases, which will also be applied to the edge.



Standard Metal Accent Finish Colors:

- #06 Charcoal Grey
- #90 Metallic Silver
- #91 Chrome
- #95 Satin Black

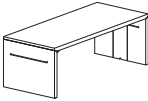
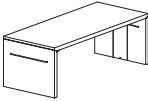
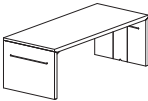
Premium Metal Accent Finish Colors:

- #07 Gold Shimmer
- #08 Penny
- #09 Brown Sugar
- #83 Metallic Champagne
- #94 Cotton



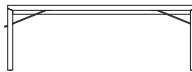
STRING GAMES MEETING TABLES | Designed by Madsen & Contois

ORDERING REQUIREMENTS:

- Model number
- Surface material
- Surface finish
- Metal accent finish
- Options, as applicable

MODEL	DIMENSIONS	MAPLE VENEER OR LAMINATE	ASH OR WALNUT VENEER	SOLID SURFACE <small>Add upcharge to applicable wood species column</small>	WEIGHT <small>For veneer, laminate and ColorCore 2 tables only</small>	
	Interior/Exterior Metal Accents 24" Depth, 29" Height					
	8122-246029-()	24" D x 60" L x 29" H	3,998	4,839	750	149 lbs.
	8122-247229-()	24" D x 72" L x 29" H	4,333	5,304	900	165 lbs.
	8122-248429-()	24" D x 84" L x 29" H	4,564	5,540	1,050	172 lbs.
	8122-249629-()	24" D x 96" L x 29" H	4,768	5,750	1,200	179 lbs.
	Interior/Exterior Metal Accents 30" Depth, 29" Height					
	8122-306029-()	30" D x 60" L x 29" H	4,498	5,593	938	160 lbs.
	8122-307229-()	30" D x 72" L x 29" H	4,708	5,803	1,125	176 lbs.
	8122-308429-()	30" D x 84" L x 29" H	4,949	6,050	1,313	182 lbs.
	8122-309629-()	30" D x 96" L x 29" H	5,183	6,289	1,500	190 lbs.
	Interior/Exterior Metal Accents 36" Depth, 29" Height					
	8122-366029-()	36" D x 60" L x 29" H	4,442	5,289	1,125	171 lbs.
	8122-367229-()	36" D x 72" L x 29" H	4,843	5,819	1,350	187 lbs.
	8122-368429-()	36" D x 84" L x 29" H	5,115	6,096	1,575	193 lbs.
	8122-369629-()	36" D x 96" L x 29" H	5,354	6,336	1,800	202 lbs.

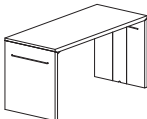
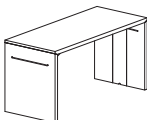
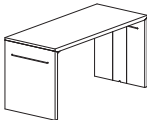
OPTIONS

-PF02	Premium Metal Finish	\$80	MA0	MA2	MA3
-MA0	No Metal Accents	n/c	 No Metal Accents	 Interior Metal Accents Only	 Interior Metal Accents - Both Sides Exterior Metal Accents - Single Side
-MA2	Interior Metal Accents Only	n/c			
-MA3	Interior Metal Accents - Both Sides Exterior Metal Accent - Single Side	n/c			



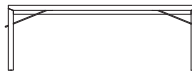
STRING GAMES MEETING TABLES | Designed by Madsen & Contois

ORDERING REQUIREMENTS:

- Model number
- Surface material
- Surface finish
- Metal accent finish
- Options, as applicable

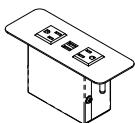
MODEL	DIMENSIONS	MAPLE VENEER OR LAMINATE	ASH OR WALNUT VENEER	SOLID SURFACE <small>Add upcharge to applicable wood species column</small>	WEIGHT <small>For veneer, laminate and ColorCore 2 tables only</small>	
	Interior/Exterior Metal Accents 24" Depth, 42" Height					
	8122-246042-()	24" D x 60" L x 42" H	4,612	5,712	750	157 lbs.
	8122-247242-()	24" D x 72" L x 42" H	4,816	5,922	900	173 lbs.
	8122-248442-()	24" D x 84" L x 42" H	5,029	6,135	1,050	180 lbs.
	8122-249642-()	24" D x 96" L x 42" H	5,233	6,344	1,200	189 lbs.
	Interior/Exterior Metal Accents 30" Depth, 42" Height					
	8122-306042-()	30" D x 60" L x 42" H	5,350	6,947	938	168 lbs.
	8122-307242-()	30" D x 72" L x 42" H	5,590	7,192	1,125	184 lbs.
	8122-308442-()	30" D x 84" L x 42" H	5,831	7,440	1,313	190 lbs.
	8122-309642-()	30" D x 96" L x 42" H	6,041	7,649	1,500	199 lbs.
	Interior/Exterior Metal Accents 36" Depth, 42" Height					
	8122-366042-()	36" D x 60" L x 42" H	5,966	7,941	1,125	179 lbs.
	8122-367242-()	36" D x 72" L x 42" H	6,211	8,186	1,350	195 lbs.
	8122-368442-()	36" D x 84" L x 42" H	6,489	8,470	1,575	201 lbs.
	8122-369642-()	36" D x 96" L x 42" H	6,758	8,745	1,800	211 lbs.

OPTIONS

-PF02	Premium Metal Finish	\$80	MA0	MA2	MA3
-MA0	No Metal Accents	n/c			
-MA2	Interior Metal Accents Only	n/c	No Metal Accents	Interior Metal Accents Only	Interior Metal Accents - Both Sides
-MA3	Interior Metal Accents - Both Sides Exterior Metal Accent - Single Side	n/c			Exterior Metal Accents - Single Side

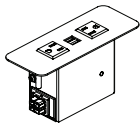

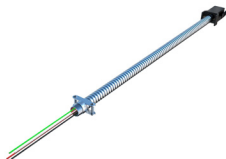
STRING GAMES MEETING TABLES - POWER UNITS | Designed by Madsen & Contois

- Unit below is corded and available for top surface and/or side-mount placement. Refer to pages 261-262 for daisy chain options.
- Side-mount placement available on outside of panel bases and can only be added to tables without exterior metal accent. Power unit will be positioned vertically and includes matching wood cover on panel base interior.
- Please specify if power unit is to be placed on table top or outside base panel.
- Cord length should be taken into account when specifying electrical placement.
- Power source location must be identified.
- For single power unit placed on table top, location will be centered as standard.
- For panel base placement, refer to page 262 for power unit standard locations.
- Panel bases and underside of tables feature removable panels for wire management accessibility.
- To add power cord exit to the exterior base panel, please specify -"PC02" and add \$75 List.

MODEL	DESCRIPTION	LIST
PB3-S, Silver Finish PB3-W, White Finish 	Power Band 3 <ul style="list-style-type: none"> ■ Dimensions: 6.5" W x 2.5" D ■ Two (2) simplex outlets and two (2) USB charging ports. ■ 108" electrical cord. ■ UL listed. 	510




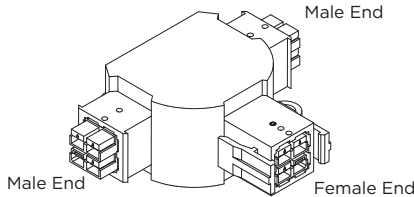
STRING GAMES MEETING TABLES - DAISY CHAIN COMPONENTS | Designed by Madsen & Contois

- Daisy chain units are required when more than one electrical unit is specified on one top.
- To determine jumper cable length, measure length from edge of electrical unit to end of table.
- Every connection point must be a female-to-male or male-to-female connection (all daisy chain power units feature male ends).

MODEL	DESCRIPTION	LIST												
PB3-DC-S, Silver Finish PB3-DC-W, White Finish 	Power Band 3 Daisy Chain <ul style="list-style-type: none"> ■ Dimensions: 6.5" W x 2.5" D ■ Two (2) simplex outlets and two (2) USB charging ports. ■ UL listed. 	615												
PB-ST-CD-72 	Power Band Starter Cable, 72" Long, Corded Plug Infeed <ul style="list-style-type: none"> ■ Must select either corded or hardwire starter cable, which goes from power source in wall or floor to first Power Band Unit. 	255												
PB-ST-HW-() 	Power Band Starter Cable, Hardwire Infeed <ul style="list-style-type: none"> ■ Must select either corded or hardwire starter cable, which goes from power source in wall or floor to first Power Band Unit. <table border="1"> <thead> <tr> <th>MODEL</th><th>LENGTH</th><th>LIST</th></tr> </thead> <tbody> <tr> <td>PB-ST-HW-72</td><td>72"</td><td>175</td></tr> <tr> <td>PB-ST-HW-108</td><td>108"</td><td>205</td></tr> <tr> <td>PB-ST-HW-120</td><td>120"</td><td>225</td></tr> </tbody> </table>	MODEL	LENGTH	LIST	PB-ST-HW-72	72"	175	PB-ST-HW-108	108"	205	PB-ST-HW-120	120"	225	see table
MODEL	LENGTH	LIST												
PB-ST-HW-72	72"	175												
PB-ST-HW-108	108"	205												
PB-ST-HW-120	120"	225												

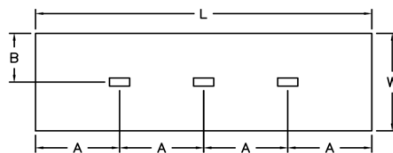
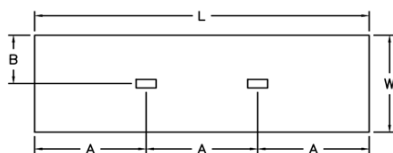
STRING GAMES MEETING TABLES - DAISY CHAIN COMPONENTS | Designed by Madsen & Contois

- Daisy chain units are required when more than one electrical unit is specified on one top.
- To determine jumper cable length, measure length from edge of electrical unit to end of table.
- Every connection point must be a female-to-male or male-to-female connection (all daisy chain power units feature male ends).

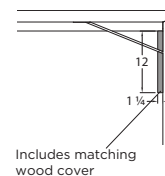
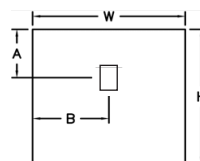
MODEL	DESCRIPTION	LIST																											
PB3-FF-() 	Power Band Jumper Cables, Female to Female <ul style="list-style-type: none"> ■ Typically used to connect two (2) units together. ■ For additional lengths in 12" increments, please add \$25 List per foot. <table border="1"> <thead> <tr> <th>MODEL</th><th>LENGTH</th><th>LIST</th></tr> </thead> <tbody> <tr><td>PB-FF-12</td><td>12"</td><td>120</td></tr> <tr><td>PB-FF-24</td><td>24"</td><td>130</td></tr> <tr><td>PB-FF-30</td><td>30"</td><td>145</td></tr> <tr><td>PB-FF-36</td><td>36"</td><td>145</td></tr> <tr><td>PB-FF-48</td><td>48"</td><td>155</td></tr> <tr><td>PB-FF-54</td><td>54"</td><td>160</td></tr> <tr><td>PB-FF-60</td><td>60"</td><td>165</td></tr> <tr><td>PB-FF-72</td><td>72"</td><td>175</td></tr> </tbody> </table>	MODEL	LENGTH	LIST	PB-FF-12	12"	120	PB-FF-24	24"	130	PB-FF-30	30"	145	PB-FF-36	36"	145	PB-FF-48	48"	155	PB-FF-54	54"	160	PB-FF-60	60"	165	PB-FF-72	72"	175	see table
MODEL	LENGTH	LIST																											
PB-FF-12	12"	120																											
PB-FF-24	24"	130																											
PB-FF-30	30"	145																											
PB-FF-36	36"	145																											
PB-FF-48	48"	155																											
PB-FF-54	54"	160																											
PB-FF-60	60"	165																											
PB-FF-72	72"	175																											
PB-FM-() 	Power Band Jumper Cables, Female to Male <ul style="list-style-type: none"> ■ Typically used to connect two (2) units together. ■ For additional lengths in 12" increments, please add \$25 List per foot. <table border="1"> <thead> <tr> <th>MODEL</th><th>LENGTH</th><th>LIST</th></tr> </thead> <tbody> <tr><td>PB-FM-12</td><td>12"</td><td>120</td></tr> <tr><td>PB-FM-24</td><td>24"</td><td>130</td></tr> <tr><td>PB-FM-30</td><td>30"</td><td>145</td></tr> <tr><td>PB-FM-36</td><td>36"</td><td>145</td></tr> <tr><td>PB-FM-48</td><td>48"</td><td>155</td></tr> <tr><td>PB-FM-54</td><td>54"</td><td>160</td></tr> <tr><td>PB-FM-60</td><td>60"</td><td>165</td></tr> <tr><td>PB-FM-72</td><td>72"</td><td>175</td></tr> </tbody> </table>	MODEL	LENGTH	LIST	PB-FM-12	12"	120	PB-FM-24	24"	130	PB-FM-30	30"	145	PB-FM-36	36"	145	PB-FM-48	48"	155	PB-FM-54	54"	160	PB-FM-60	60"	165	PB-FM-72	72"	175	see table
MODEL	LENGTH	LIST																											
PB-FM-12	12"	120																											
PB-FM-24	24"	130																											
PB-FM-30	30"	145																											
PB-FM-36	36"	145																											
PB-FM-48	48"	155																											
PB-FM-54	54"	160																											
PB-FM-60	60"	165																											
PB-FM-72	72"	175																											
PB-T 	Power Band T-Connector <ul style="list-style-type: none"> ■ Used when power is needed to go in two directions. ■ Two (2) male ends and one (1) female end. 	160																											

STRING GAMES MEETING TABLES - POWER UNIT PLACEMENT | Designed by Madsen & Contois

Table Top Positioning



Panel Base (outside only, without exterior metal accent)



2 Power Units

W x L	A	B
24" x 60"	20"	12"
24" x 72"	24"	12"
24" x 84"	28"	12"
24" x 96"	32"	12"
30" x 60"	20"	15"
30" x 72"	24"	15"
30" x 84"	28"	15"
30" x 96"	32"	15"
36" x 60"	20"	18"
36" x 72"	24"	18"
36" x 84"	28"	18"
36" x 96"	32"	18"

3 Power Units

W x L	A	B
24" x 60"	15"	12"
24" x 72"	18"	12"
24" x 84"	21"	12"
24" x 96"	24"	12"
30" x 60"	15"	15"
30" x 72"	18"	15"
30" x 84"	21"	15"
30" x 96"	24"	15"
36" x 60"	15"	18"
36" x 72"	18"	18"
36" x 84"	21"	18"
36" x 96"	24"	18"

1 Power Unit

W x L	A	B
24" x 29"	8.75"	12"
30" x 29"	8.75"	15"
36" x 29"	8.75"	18"
24" x 42"	8.75"	12"
30" x 42"	8.75"	15"
36" x 42"	8.75"	18"

For custom power unit placement, please contact client services to verify that location can be accommodated.