

CATALOG #: _____

Type: _____

PROJECT: _____

FEATURES

- Small profile installs inconspicuously in confined spaces
- Delivers uniform, glare-free task lighting for work areas
- Housing keyhole slots and knockouts provide quick and easy installation
- Individual or continuous row mounting
- All-welded construction provides long lasting performance
- Available with attractive rocker switch for easy on/off
- Optional anti-microbial white finish available for use in healthcare applications
- Made Right Here® in the USA

SPECIFICATIONS

- HOUSING** – 20-gauge die-formed, welded C.R.S.
- SHIELDING** – Diffuse matte acrylic, .080" thick.
- FINISH** – 92% minimum average reflective white polyester powder coat bonded to phosphate-free, multi-stage pretreated metal. All parts painted after fabrication to facilitate installation, increase efficiency, and inhibit corrosion.
- ELECTRICAL** – High quality mid-power LED board(s). L85 at 50,000 hours. 25°C maximum ambient operating temperature.
- MOUNTING** – Surface.
- LISTINGS** –
 - cCSAus certified as luminaire suitable for dry or damp locations.
- WARRANTY** – 5-year limited warranty, see hew.com/warranty.

ORDERING EXAMPLE: 1SF 4 - L24/835 - AF12125 - OPTIONS - DRV - UNV

ORDERING INFO

SERIES	LENGTH	LUMENS ^[1]	CRI	CCT	SHIELDING
1SF	1 1'	1'	8 80	30 3000K	DMA Diffuse matte acrylic, .080" thick
	2 2'	L6 600lm		35 3500K	AF12125 Frosted acrylic, pattern #12, .125" thick
	3 3'	2'		40 4000K	
	4 4'	L12 1,200lm			
		3'			
		L18 1,800lm			
		4'			
		L24 2,400lm			

OPTIONS

- GCO** Grounded convenience outlet ^[2]
- C&P/120** 6-1/2' cord and plug, NEMA 5-15P ^[3]
- WRS/120** White rocker switch ^[4]
- AMW** Anti-microbial white finish

OCCUPANCY SENSOR

- OCCLV OSF10-IOW** Passive infrared sensor ^[5]

DRIVER

- DRV** Driver prewired for non-dimming applications
- DIM** Dimming driver prewired for 0-10V low voltage applications

VOLTAGE

- 120** 120V
- 277** 277V
- UNV** 120-277V

NOTES

¹ Lumen output based on 3500 CCT. Actual lumens may vary +/-5%.

² 120V only; not available with 1' fixture; cannot be used with occupancy sensor in 2' fixture.

³ 120V only.

⁴ 120V only.

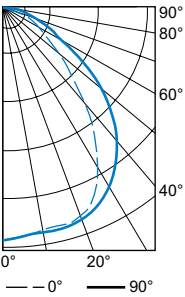
⁵ Factory-installed. 120V or 277V only. Not available with 1' fixture.



1SF^{LED} Solid Front Under Cabinet Light

PHOTOMETRY

1SF-4-L24/835-AF12125 Total Luminaire Output: 2440 lumens; 29 Watts | Efficacy: 84.1 lm/W | 82 CRI; 3500K CCT

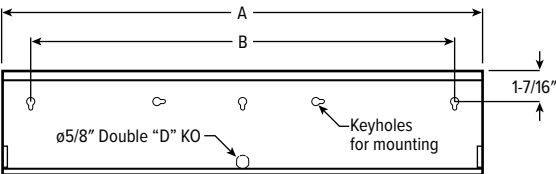


CANDLEPOWER DISTRIBUTION	VERTICAL ANGLE	HORIZONTAL ANGLE			ZONAL LUMENS
		0°	45°	90°	
	0	1079	1079	1079	
	10	1047	1051	1062	102
	20	1034	1045	1051	297
	30	876	935	978	458
	40	590	712	821	515
	50	341	454	599	453
	60	184	232	336	318
	70	92	103	138	177
	80	50	50	50	84
	90	17	18	10	36

LUMEN SUMMARY	ZONE	LUMENS	% FIXTURE
	0 - 30	857	35
	0 - 40	1372	56
	0 - 60	2144	88
	0 - 90	2440	100
	0 - 180	2440	100

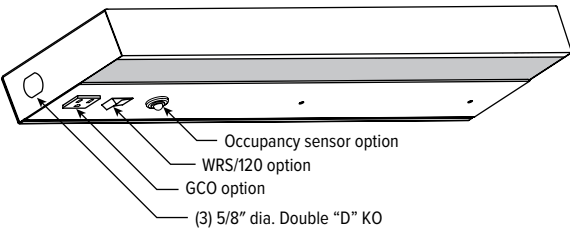
FIXTURE DETAILS

BACK VIEW

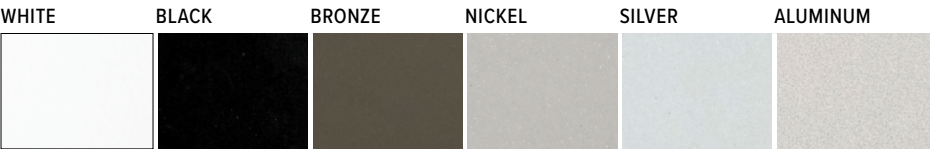


NOMINAL LENGTH	ACTUAL LENGTH (A)	ACTUAL LENGTH (B)
1'	12-1/8"	7-1/2"
2'	22-5/8"	20"
3'	34-3/8"	29"
4'	46-1/4"	38"

Back of housing provided with adequate keyhole slots and knockout for mounting and wiring.



FINISH OPTIONS



For custom color, please specify RAL code or a manufacturer code with description. All custom colors other than RAL require two sample swatches, minimum 1" square.

