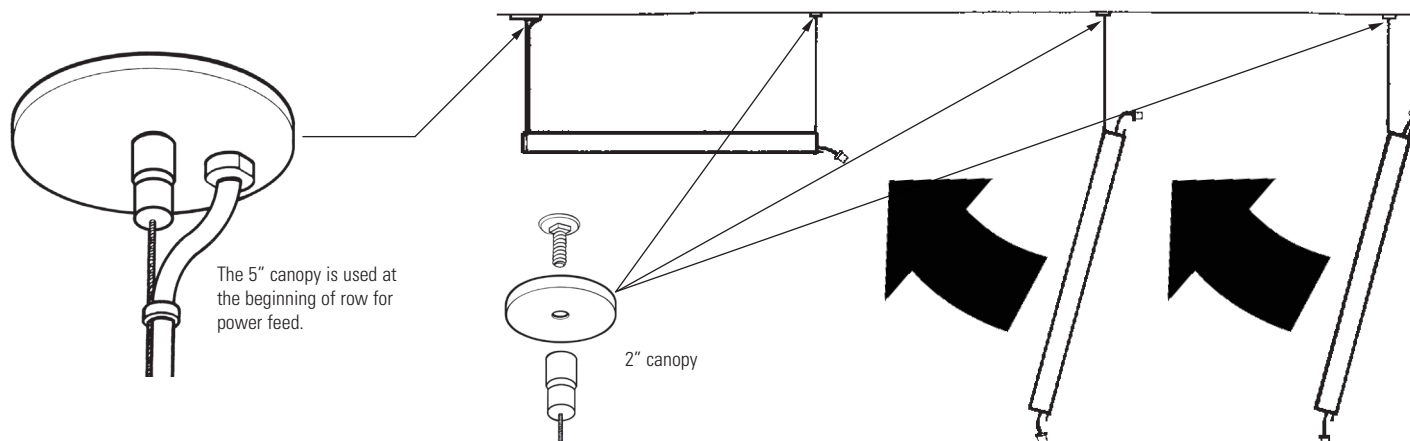


Warning:

- This product must be installed in accordance with the applicable local, state, and national electrical codes by a licensed person familiar with the construction and operation of the product and the hazards involved.
- Make sure all electrical power is turned off while installing the fixture.
- This luminaire must be adequately grounded for protection against shock hazards and to assure proper operation.
- Disconnect power before servicing.
- Always use correct lamp type and wattages.

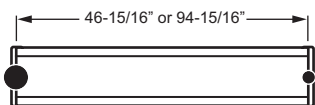
Step 1: STARTING A ROW

- If using a GAT fastener for installation, refer to page 3 for GAT mounting bracket assembly instructions prior to installing a fixture.
- Only the first fixture in each row will require two suspension cables. Each adjoining fixture will require only one cable before attaching to the previous fixture.
- For safety, always support the weight of the fixture. Do not leave a fixture hanging by only one end while working.



Step 2: MOUNTING POINT DIMENSIONS

Stand alone fixture

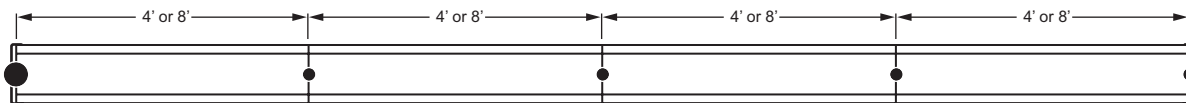


- 5" canopy power feed
- 2" canopy non-power

Mounting brackets for suspending light fixtures must be placed every 4 feet or 8 feet (nominal) depending on length of fixture to be installed.

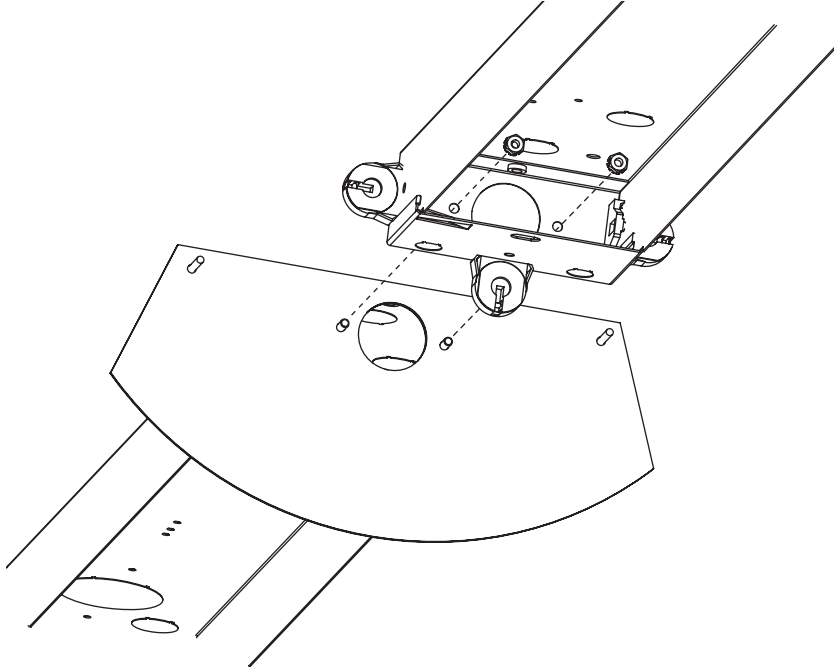
One power feed source through 5" diameter canopy will be used per single fixture when installing individual fixtures, or per row when installing in series. Each non-power mounting point will require a 2" diameter canopy.

Continuous row

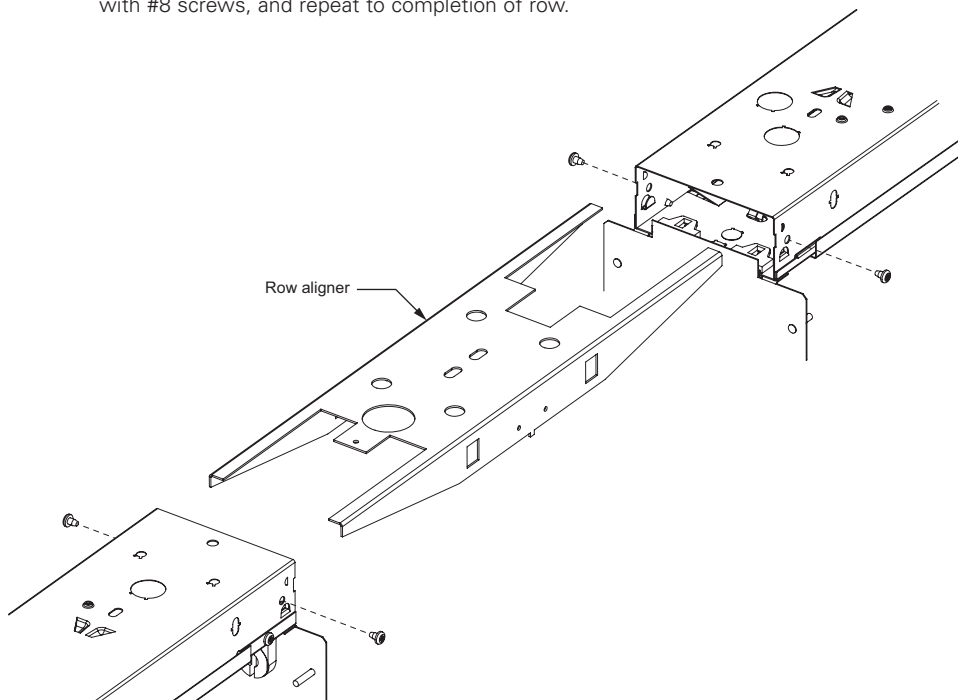


Step 3a: CONTINUOUS ROW – AB Series

- A. Line-up studs from end plate of first fixture with corresponding holes on second fixture (see illustration below). Use nuts (provided) to secure the fixtures together, and repeat to completion of row.

**Step 3b:** CONTINUOUS ROW – ST-CB and ST-WB Series

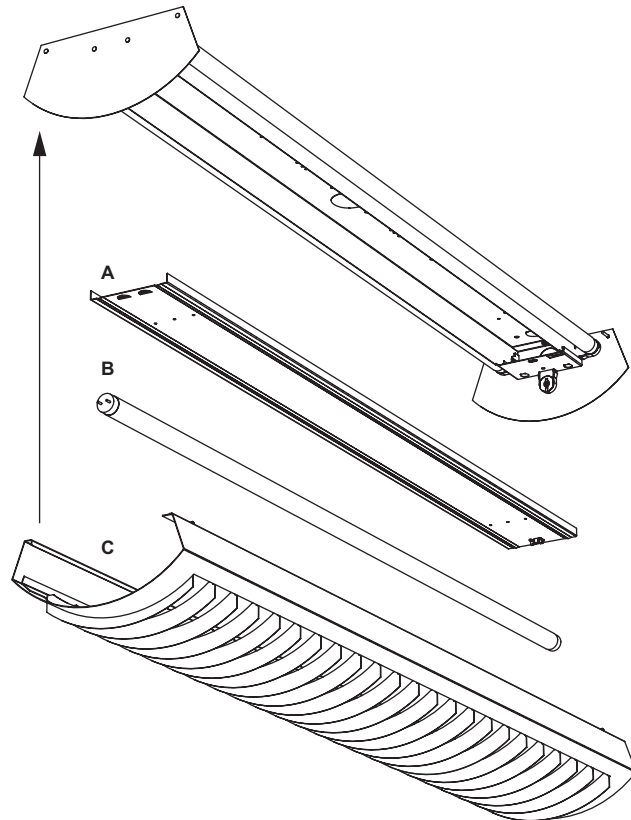
- A. Slide row aligner into channel of first fixture and fasten with #8 screws (provided). Slide channel of second fixture over row aligner and fasten with #8 screws, and repeat to completion of row.



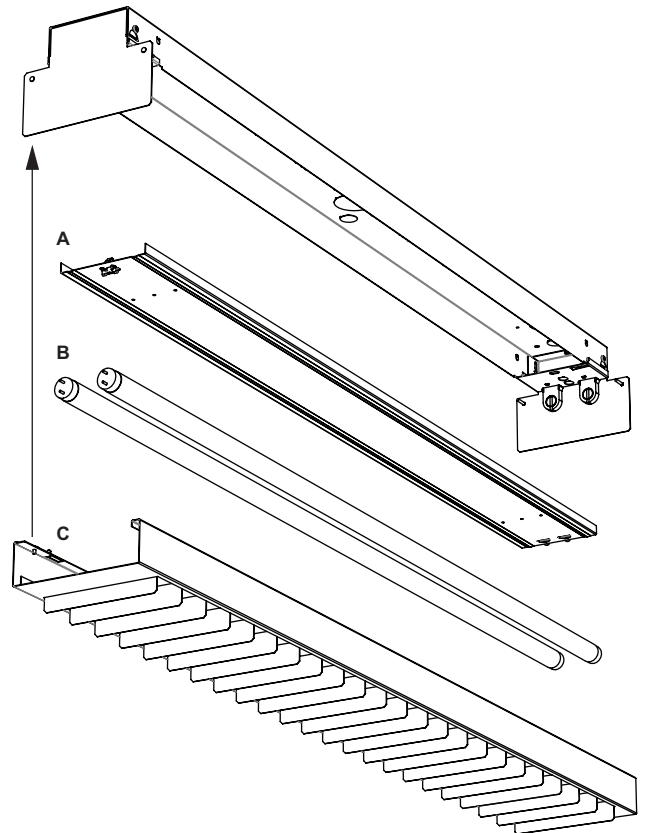
Step 4: ASSEMBLY

- Install wireway cover by securing onto lamp bracket with quarter-turn fastener (provided).
- Install lamps.
- Install baffle by hooking flange on one side over the corresponding studs on the end plates. Then, swing diffuser up and pull the opposite side up and over the remaining studs on the end plates. Finally, slide latches toward ends of fixture, securing the baffle in place. *See the Baffle Detail View below.*

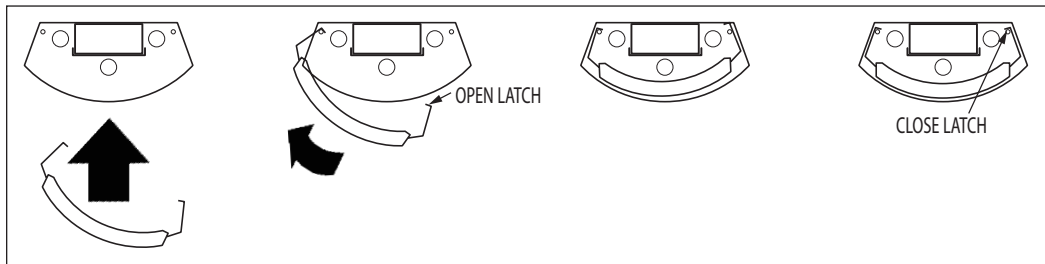
AB2 shown



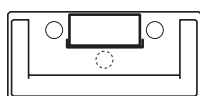
ST-CB shown



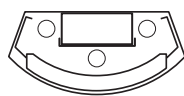
BAFFLE DETAIL VIEW



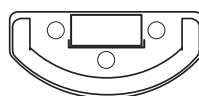
FOR USE WITH THE FOLLOWING SERIES:



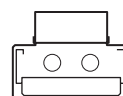
AB1



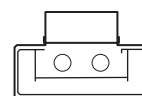
AB2



AB3



ST-CB

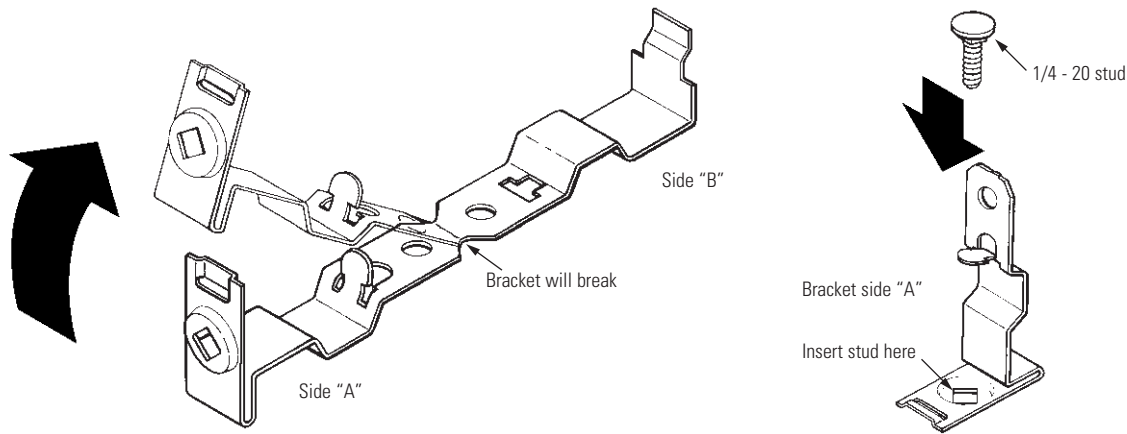


ST-WB

GAT MOUNTING BRACKET ASSEMBLY

Step 1: BREAK BRACKET

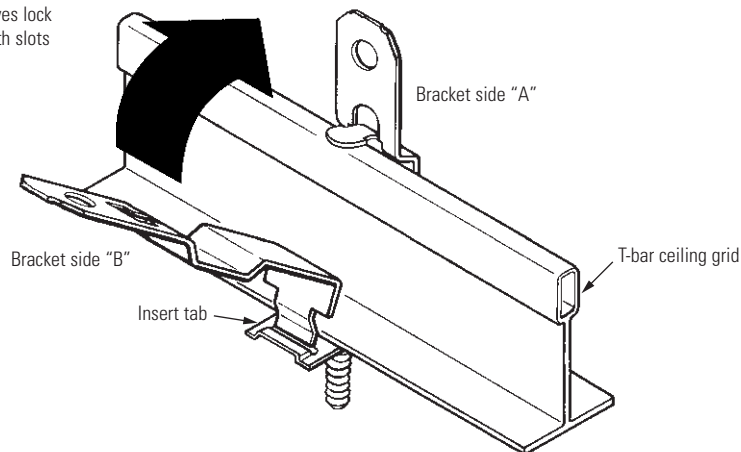
- T-bar mounting bracket halves are supplied as a one-piece metal stamping. Bend inward at middle until bracket breaks into two pieces.
- Insert 1/4 - 20 threaded stud into "A" half of bracket.



Step 2: SNAP ON T-BAR

- T-bar mounting bracket halves interlock and snap together around T-bar. Brackets must be placed exactly on each mounting point for correct installation and hanging of cables.

Bracket halves lock together with slots and tabs.



Step 3: BEGIN INSTALLATION

- Follow the steps outlined on page 1 for proper installation procedure.