

CATALOG #: \_\_\_\_\_

Type: \_\_\_\_\_

PROJECT: \_\_\_\_\_

## FEATURES

- Complementary to Williams' AI3 Series, the decorative and versatile AIW provides functional indirect illumination
- Non-perforated housing or 33% open perforation beneath LEDs offers choice of appearance
- Translucent matte white acrylic over perforations provides uniform, luminous effect
- Fixture attaches to wall bracket for simple installation
- Driver and wireway assembly remove for easy maintenance
- Self-aligning joining method ensures straight rows
- Made Right Here® in the USA

## SPECIFICATIONS

- HOUSING** – 20-gauge die-formed, welded C.R.S.
- REFLECTIVE SURFACES** – 92% minimum average reflective white polyester powder coat on interior steel components.
- SHIELDING** – Die-formed C.R.S. white polyester powder coated diffuser. Frosted acrylic.
- FINISH** – Textured matte white polyester TGIC powder coat bonded to phosphate-free, multi-stage pretreated metal. All parts painted after fabrication to facilitate installation, increase efficiency, and inhibit corrosion.
- ELECTRICAL** – High quality mid-power LED boards. L70 >50,000 hours.
- MOUNTING** – Fixture attaches to wall mounted, powder coated, die-formed C.R.S. bracket.
- LISTINGS** – cCSAus certified as luminaire suitable for dry or damp locations.
- WARRANTY** – 5-year limited warranty, see [hew.com/warranty](http://hew.com/warranty).

## ORDERING EXAMPLE: AIW P33 - 4 - L6/835 - OPTIONS - DIM - UNV

### ORDERING INFO

SERIES	PERFORATION OPTIONS <sup>(1)</sup>	LENGTH	LUMENS <sup>(2)</sup>	CRI	CCT
AIW	P33	33% open perforation with matte white acrylic overlay	Stand-alone – 4' & 8' nominal lengths, fixture ships assembled. Example: 4 = 4'	L6 600lm L11 1,100lm	8 80 27 2700K 30 3000K 35 3500K 40 4000K 50 5000K
	SLD	Solid bottom	Row-mount – Lengths specified in 4' increments Example: 12 = 12'		

### PRODUCT BUILDER

Simplify ordering & layout design with the Williams Linear Product Builder at [hew.com/product-builder](http://hew.com/product-builder)

### OPTIONS

EM/7W	7-watt emergency battery
EM/10W	10-watt emergency battery

### CONTROL <sup>(4)</sup>

DRV	Non-dimming driver
DIM	Dimming driver

### VOLTAGE

120	120V
277	277V
UNV	120-277V
347	347V <sup>(5)</sup>

## NOTES

- See page 3 for PERFORATION OPTIONS DETAILS.
- Lumens per foot output based on 3500 CCT. Actual lumens may vary +/-5%. See page 2 for FIXTURE PERFORMANCE DATA.

- Extended lead times may apply. Consult factory for availability.
- See page 2 for ADDITIONAL CONTROL OPTIONS.
- Not available with EM batteries.



## FIXTURE PERFORMANCE DATA

	LED PACKAGE	DELIVERED LUMENS	WATTAGE	EFFICACY (lm/W)
4'	L6	2461	32.7	75.3
	L11	4749	63.8	74.4
8'	L6	4839	62.8	77.1
	L11	8942	118.1	75.7

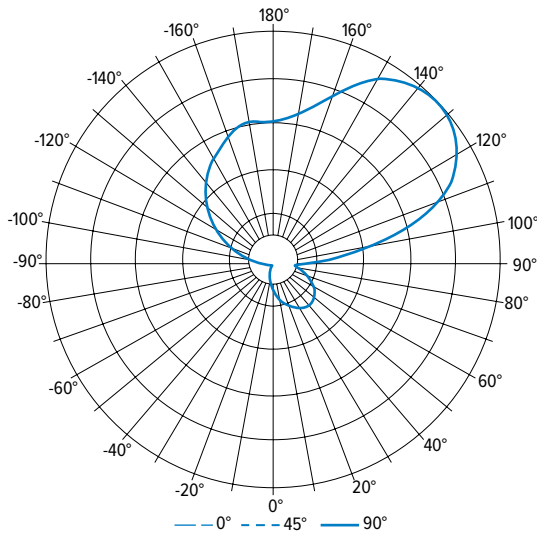
- Photometrics tested in accordance with IESNA LM-79. Results shown are based on 25°C ambient temperature.
- Wattage shown is average for 120V through 277V input.
- Results based on 3500K, 80 CRI, actual lumens may vary +/-5%
- Use multiplier table to calculate additional options.

## MULTIPLIER TABLE

COLOR TEMPERATURE		
	CCT	CONVERSION FACTOR
80 CRI	2700K	0.97
	3000K	0.99
	3500K	1.00
	4000K	1.03
	5000K	1.06
90 CRI	2700K	0.80
	3000K	0.82
	3500K	0.83
	4000K	0.86
	5000K	0.89

## PHOTOMETRY

AIWP33-4-L6/835-DIM-UNV Total Luminaire Output: 2461 lumens; 32.7 Watts | Efficacy: 75.3 lm/W | 80 CRI; 3500K CCT



VERTICAL ANGLE	HORIZONTAL ANGLE					ZONAL LUMENS
	0°	45°	90°	135°	180°	
0	80	80	80	80	80	
5	90	100	85	67	58	8
15	130	117	75	51	55	24
25	154	130	65	40	41	38
35	177	140	57	27	25	50
45	184	138	42	11	10	56
55	173	121	25	3	2	54
65	151	97	10	0	0	46
75	115	68	3	0	0	34
85	79	37	0	0	0	22
90	69	41	0	1	2	
95	192	139	27	30	28	86
105	470	345	125	97	91	225
115	664	503	214	198	173	331
125	752	596	302	272	253	376
135	780	634	365	335	316	367
145	755	628	420	404	380	317
155	673	586	459	459	426	238
165	558	531	481	487	478	143
175	490	492	486	488	483	47
180	486	486	486	486	486	

	ZONE	LUMENS	% FIXTURE
LUMEN SUMMARY	0 - 30	70	3
	0 - 40	120	5
	0 - 60	229	9
	0 - 90	331	13
	90 - 120	642	26
	90 - 150	1703	69
	90 - 180	2131	87
	0 - 180	2461	100

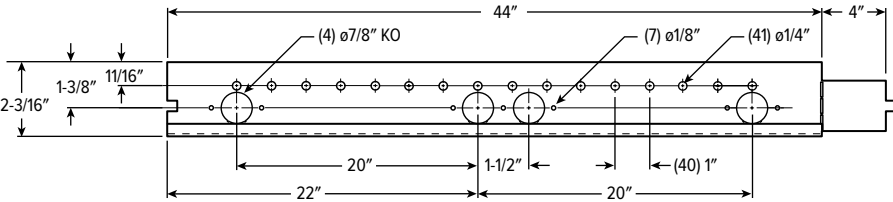
## ADDITIONAL CONTROL OPTIONS

Note: Lumen restrictions apply, consult product builder at [hew.com/product-builder](http://hew.com/product-builder).

CATALOG NUMBER	DESCRIPTION
DRV	Driver prewired for non-dimming applications
DIM	Dimming driver prewired for 0-10V low voltage applications
DIM1	1% dimming driver prewired for 0-10V low voltage applications
DIM LINE	Line voltage dimming driver (Must specify 120V or 277V only)
SD40	40% step-dimming driver
SD50	50% step-dimming driver
DALI	DALI dimming driver
LTE LINE	Lutron Hi-lume 1% 2-wire dimming driver forward phase line voltage controls (120V only)
LDE1	Lutron Hi-lume 1% EcoSystem dimming LED driver
LDE5	Lutron 5-Series 5% EcoSystem dimming LED driver
ELDO SOLOB	EldoLED Solodrive, 0.1% dimming driver for 0-10V controls
ELDO SOLOB DALI	EldoLED Solodrive, 0.1% dimming driver for DALI controls
ELDO ECO1	EldoLED Ecodrive, 1% dimming driver for 0-10V controls
ELDO ECO1 DALI	EldoLED Ecodrive, 1% dimming driver for DALI controls

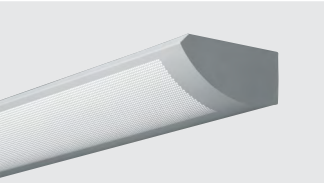


BACKVIEW

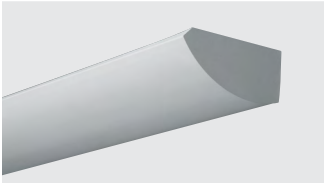


PERFORATION OPTIONS DETAILS

P33



SLD



MOUNTING DETAILS

