

QuickShip

 *Shipping in 48 hours*

NEW

TLED-READY
FIXTURES



April 2020

The Williams QuickShip program offers our top-selling LED products at a competitive price, ready to ship in 48 hours.

 Shipping in 48 hours



Why Choose Williams QuickShip?

- Competitively-priced LED products
- Easy-to-install, contractor-friendly fixtures
- Ideal for design-build projects
- On-hand inventory to support immediate job requirements
- Williams quality you know and trust
- DLC Qualified and ENERGY STAR Certified products
- Made Right Here® in the USA
- 5-year warranty

Program Guidelines

- Submit order for QuickShip (QS) items only
- Reference QuickShip in the subject line of all requests
- Consult factory for individual product quantities over 100 pieces

Contents

Recessed	3
Downlights	7
High Bays.....	9
Strips	11
Wrap & Retrofit	13
Egress.....	15
Wall Packs.....	17



LT Troffer – LED

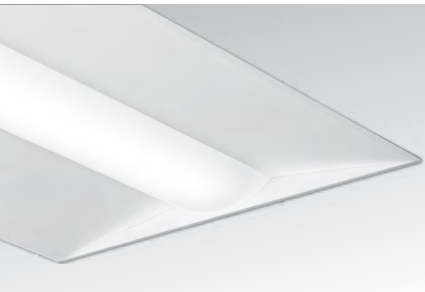
- Available with fieldseleCCT – the simplest way to personalize lighting
- Shallow housing depth
- High efficacy fixture delivers up to 140 lm/W
- DLC Premium qualified
- Made Right Here® in the USA



Fixture Standards: Frosted acrylic lens ▪ 80 CRI ▪ Dimming for 0-10V applications ▪ Universal voltage

fieldseleCCT®	DESCRIPTION
LT-22-L37/8FS-AF-QS-DIM-UNV	2' x 2' ▪ 3,700 lumens ▪ fieldseleCCT
LT-24-L57/8FS-AF-QS-DIM-UNV	2' x 4' ▪ 5,700 lumens ▪ fieldseleCCT

LED SERIES	DESCRIPTION
LT-14-L47/835-AF-QS-DIM-UNV	1' x 4' ▪ 4,700 lumens ▪ 3500K CCT
LT-14-L47/840-AF-QS-DIM-UNV	1' x 4' ▪ 4,700 lumens ▪ 4000K CCT
LT-22-L39/835-AF-QS-DIM-UNV	2' x 2' ▪ 3,900 lumens ▪ 3500K CCT
LT-22-L39/840-AF-QS-DIM-UNV	2' x 2' ▪ 3,900 lumens ▪ 4000K CCT
LT-24-L40/835-AF-QS-DIM-UNV	2' x 4' ▪ 4,000 lumens ▪ 3500K CCT
LT-24-L40/840-AF-QS-DIM-UNV	2' x 4' ▪ 4,000 lumens ▪ 4000K CCT
LT-24-L64/835-AF-QS-DIM-UNV	2' x 4' ▪ 6,400 lumens ▪ 3500K CCT
LT-24-L64/840-AF-QS-DIM-UNV	2' x 4' ▪ 6,400 lumens ▪ 4000K CCT



PT Shallow Plenum Troffer – LED

- Available with fieldseleCCT – the simplest way to personalize lighting
- Slim 2-3/8" depth for shallow plenum applications
- Room-side access
- High efficacy fixture delivers up to 134 lm/W
- Made Right Here® in the USA



Fixture Standards: Diffuse ribbed acrylic lens ▪ 80 CRI ▪ Dimming for 0-10V applications ▪ Universal voltage

fieldseleCCT®	DESCRIPTION
PT-22-L36/8FS-RA-QS-DIM-UNV	2' x 2' ▪ 3,600 lumens ▪ fieldseleCCT
PT-24-L55/8FS-RA-QS-DIM-UNV	2' x 4' ▪ 5,500 lumens ▪ fieldseleCCT

LED SERIES	DESCRIPTION
PT-22-L43/835-RA-QS-DIM-UNV	2' x 2' ▪ 4,300 lumens ▪ 3500K CCT
PT-22-L43/835-RA-QS-VDO/DSR-UNV	2' x 2' ▪ 4,300 lumens ▪ 3500K CCT ▪ Lutron Vive Daylight & Occupancy Sensor ⁽¹⁾
PT-22-L43/835-RA-QS-LDE1-UNV	2' x 2' ▪ 4,300 lumens ▪ 3500K CCT ▪ Lutron Hi-lume 1% EcoSystem dimming LED driver ⁽¹⁾
PT-22-L43/840-RA-QS-DIM-UNV	2' x 2' ▪ 4,300 lumens ▪ 4000K CCT
PT-24-L61/835-RA-QS-DIM-UNV	2' x 4' ▪ 6,100 lumens ▪ 3500K CCT
PT-24-L61/835-RA-QS-VDO/DSR-UNV	2' x 4' ▪ 6,100 lumens ▪ 3500K CCT ▪ Lutron Vive Daylight & Occupancy Sensor ⁽¹⁾
PT-24-L61/835-RA-QS-LDE1-UNV	2' x 4' ▪ 6,100 lumens ▪ 3500K CCT ▪ Lutron Hi-lume 1% EcoSystem dimming LED driver ⁽¹⁾
PT-24-L61/840-RA-QS-DIM-UNV	2' x 4' ▪ 6,100 lumens ▪ 4000K CCT

¹ Extended lead times may apply for Lutron options.



LP Edge-lit Flat Panel – LED

- Shallow housing depth
- Uniform ambient illumination
- Easy to install without the use of tools
- Seamless design prevents light leaks



Fixture Standards: Edge-lit light guide panel ▪ 80 CRI ▪ Dimming for 0-10V applications ▪ Universal voltage

LED SERIES	DESCRIPTION
LP-14-L40/835-QS-DIM-UNV	1' x 4' ▪ 4,000 lumens ▪ 3500K CCT
LP-14-L40/840-QS-DIM-UNV	1' x 4' ▪ 4,000 lumens ▪ 4000K CCT
LP-22-L40/835-QS-DIM-UNV	2' x 2' ▪ 4,000 lumens ▪ 3500K CCT
LP-22-L40/840-QS-DIM-UNV	2' x 2' ▪ 4,000 lumens ▪ 4000K CCT
LP-24-L50/835-QS-DIM-UNV	2' x 4' ▪ 5,000 lumens ▪ 3500K CCT
LP-24-L50/840-QS-DIM-UNV	2' x 4' ▪ 5,000 lumens ▪ 4000K CCT

Downlights

 Shipping in 48 hours



4DR 4.5” Round Downlight – LED

- Williams innovative TrimLock® reflector retention system ensures the trim remains flush with the ceiling plane
- Industry-leading efficacies as high as 113 lm/W
- Fully room-side accessible
- Made Right Here® in the USA



Fixture Standards: 80 CRI ▪ 3500K ▪ 1% Dimming Driver, 0-10V ▪ Open Reflector, Clear Semi-Specular Finish ▪ Wide Distribution ▪ 1/2” Standard Flange

LED SERIES	DESCRIPTION
4DR-TL-L10/835-QS-DIM1-UNV-OW-OF-CS-N-F1	1,000 Lumens ▪ New construction pan with mounting hardware
4DR-TL-L20/835-QS-DIM1-UNV-OW-OF-CS-N-F1	2,000 Lumens ▪ New construction pan with mounting hardware
4DR-TL-L30/835-QS-DIM1-UNV-OW-OF-CS-N-F1	3,000 Lumens ▪ New construction pan with mounting hardware



6DR 6” Round Downlight – LED

- Williams innovative TrimLock® reflector retention system ensures the trim remains flush with the ceiling plane
- Industry-leading efficacies as high as 116 lm/W
- Fully room-side accessible
- Made Right Here® in the USA



Fixture Standards: 80 CRI ▪ 3500K ▪ 1% Dimming Driver, 0-10V ▪ Open Reflector, Clear Semi-Specular Finish ▪ Wide Distribution ▪ 1/2” Standard Flange

LED SERIES	DESCRIPTION
6DR-TL-L10/835-QS-DIM1-UNV-OW-OF-CS-N-F1	1,000 Lumens ▪ New construction pan with mounting hardware
6DR-TL-L20/835-QS-DIM1-UNV-OW-OF-CS-N-F1	2,000 Lumens ▪ New construction pan with mounting hardware
6DR-TL-L30/835-QS-DIM1-UNV-OW-OF-CS-N-F1	3,000 Lumens ▪ New construction pan with mounting hardware

High Bays

 Shipping in 48 hours



GL Low-Profile High Bay – LED or TLED

- Shallow fixture depth of less than 4"
- Quick-wire access for easy installation
- Available in LED or TLED-ready configurations
- Made Right Here® in the USA



Fixture Standards: 4' ▪ VBY hangers ▪ Universal voltage

LED SERIES	DESCRIPTION
GL-4-L200/840-(2)VBY/PWU-QS-DIM-UNV	20,000 lumens ▪ 4000K CCT ▪ 0-10V dimming
GL-4-L200/850-(2)VBY/PWU-QS-DIM-UNV	20,000 lumens ▪ 5000K CCT ▪ 0-10V dimming
TLED SERIES	DESCRIPTION
GL-4-44T5LS/B-(2)VBY/PWU-QS-UNV	4-Lamp ▪ T5 Type B, single end lamps
GL-4-64T5LS/B-(2)VBY/PWU-QS-UNV	6-Lamp ▪ T5 Type B, single end lamps



GC Classic Round High Bay – LED

- Die-cast aluminum housing
- -30 to 50°C operating temperature
- IP65 rated for tough environments
- One-for-one HID replacement

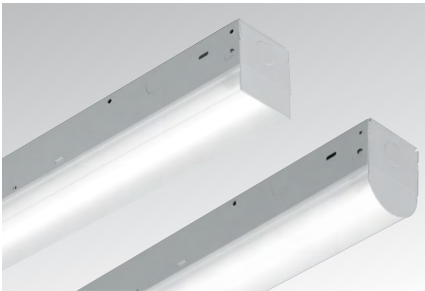


Fixture Standards: Tempered glass lens ▪ 80 CRI ▪ 4000K CCT ▪ Dimming for 0-10V applications ▪ Universal voltage

LED SERIES	DESCRIPTION
GC-L120/840-G-QS-DIM-UNV	12,000 lumens
GC-L190/840-G-QS-DIM-UNV	19,000 lumens
GC-L310/840-G-QS-DIM-UNV	31,000 lumens

Strips

 Shipping in 48 hours



75S | 75R Narrow Lens Strip – LED

- Available with fieldseleCCT – the simplest way to personalize lighting
- Round or square lens provides a clean look for architectural environments
- Available in 4' and 8' lengths
- Up to 12,000 lumens, 161 lm/W
- Made Right Here® in the USA



Fixture Standards: 80 CRI ▪ Dimming for 0-10V applications ▪ Universal voltage

fieldseleCCT®	DESCRIPTION
75S-4-L45/8FS-QS-DIM-UNV	4' ▪ 4,500 lumens ▪ fieldseleCCT ▪ Square lens
75S-4-L60/8FS-QS-DIM-UNV	4' ▪ 6,000 lumens ▪ fieldseleCCT ▪ Square lens
75S-8-L90/8FS-QS-DIM-UNV	8' ▪ 9,000 lumens ▪ fieldseleCCT ▪ Square lens
75S-8-L120/8FS-QS-DIM-UNV	8' ▪ 12,000 lumens ▪ fieldseleCCT ▪ Square lens

LED SERIES	DESCRIPTION
75S-4-L50/835-QS-DIM-UNV	4' ▪ 5,000 lumens ▪ 3500K CCT ▪ Square lens
75R-4-L50/835-QS-DIM-UNV	4' ▪ 5,000 lumens ▪ 3500K CCT ▪ Round lens
75S-4-L50/840-QS-DIM-UNV	4' ▪ 5,000 lumens ▪ 4000K CCT ▪ Square lens
75R-4-L50/840-QS-DIM-UNV	4' ▪ 5,000 lumens ▪ 4000K CCT ▪ Round lens
75S-8-L100/835-QS-DIM-UNV	8' ▪ 10,000 lumens ▪ 3500K CCT ▪ Square lens
75R-8-L100/835-QS-DIM-UNV	8' ▪ 10,000 lumens ▪ 3500K CCT ▪ Round lens
75S-8-L100/840-QS-DIM-UNV	8' ▪ 10,000 lumens ▪ 4000K CCT ▪ Square lens
75R-8-L100/840-QS-DIM-UNV	8' ▪ 10,000 lumens ▪ 4000K CCT ▪ Round lens



76 Standard Strip – LED or TLED

- Low 2" profile housing
- Available in 4' and 8' lengths
- High efficacy fixture delivers up to 150 lm/W
- Available in LED or TLED-ready configurations
- Made Right Here® in the USA



Fixture Standards: Universal voltage

LED SERIES	DESCRIPTION
76-4-L53/835-QS-DIM-UNV	4' ▪ 5,300 lumens ▪ 80 CRI ▪ 3500K CCT ▪ 0-10V dimming
76-4-L53/840-QS-DIM-UNV	4' ▪ 5,300 lumens ▪ 80 CRI ▪ 4000K CCT ▪ 0-10V dimming
76-8-L106/835-QS-DIM-UNV	8' ▪ 10,600 lumens ▪ 80 CRI ▪ 3500K CCT ▪ 0-10V dimming
76-8-L106/840-QS-DIM-UNV	8' ▪ 10,600 lumens ▪ 80 CRI ▪ 4000K CCT ▪ 0-10V dimming

TLED SERIES	DESCRIPTION
76-4-24T8LS/B-QS-UNV	4' ▪ 2-Lamp ▪ T8 Type B, single end lamps
76-8-44T8LS/B-QS-UNV	8' ▪ 4-Lamp ▪ T8 Type B, single end lamps



17 Low-Profile Wrap – LED or TLED

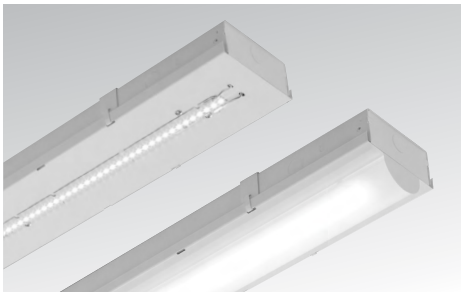
- Wrap around lens provides uniform downward light and subtle side illumination
- Shallow depth provides low-profile appearance
- Shielding is secured continuously along fixture sides
- Available in LED or TLED-ready configurations
- Made Right Here® in the USA



Fixture Standards: 4' ▪ Prismatic acrylic ▪ Dimming for 0-10V applications ▪ Universal voltage

LED SERIES	DESCRIPTION
17-4-L55/835-AF-QS-DIM-UNV	5,500 lumens ▪ 3500K CCT ▪ Frosted diffuser

TLED SERIES	DESCRIPTION
17-4-24T8LS/B-A-QS-UNV	4' ▪ 2-Lamp ▪ T8 Type B, single end lamps ▪ Clear diffuser



SRK Strip Retrofit Kit – LED

- Quickly upgrade existing fluorescent strips to energy-saving LED
- Simple installation does not require tools
- Fits any 3-3/4" - 4-1/2" wide existing strip housing
- Made Right Here® in the USA



Fixture Standards: 4' ▪ 80 CRI ▪ Dimming for 0-10V applications ▪ Universal voltage

LED SERIES	DESCRIPTION
SRK-M4-L52/840-QS-DIM-UNV	4' ▪ 5,200 lumens ▪ 4000K CCT
SRKR-M4-L52/840-QS-DIM-UNV	4' ▪ Round Lens ▪ 5,200 lumens ▪ 4000K CCT
SRK-M8-L104/840-QS-DIM-UNV	8' ▪ 5,200 lumens ▪ 4000K CCT
SRKR-M8-L104/840-QS-DIM-UNV	8' ▪ Round Lens ▪ 5,200 lumens ▪ 4000K CCT

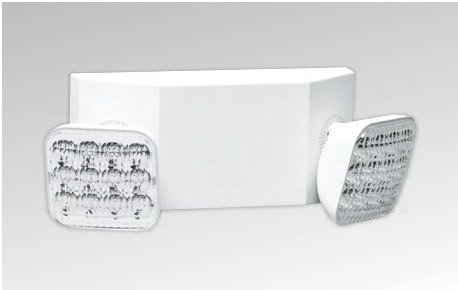


EXIT Exit Sign – LED

- Compact, low-profile design
- Provided as universal single face/double face unit
- Ni-Cad battery on emergency (EM) units provides 90 minutes of emergency operation
- Removable directional indicators

Fixture Standards: AC operation with emergency battery backup ▪ Industry-standard white housing ▪ 120 & 277 dual voltage

LED SERIES	DESCRIPTION
EXIT-R-EM-WHT-QS-D	Red Letters



EMER/LED Emergency Light – LED

- Long lasting, efficient ultra-bright white LED lamp heads
- High-performance reflector and plastic lens for optimal light distribution
- Ni-Cad battery provides 90 minutes of emergency operation

Fixture Standards: AC operation with emergency battery backup ▪ Industry-standard white housing ▪ 120 & 277 dual voltage

LED SERIES	DESCRIPTION
EMER/LED-WHT-QS-D	Wall or ceiling mount

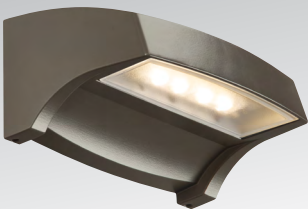


EMER/DECO Decorative Light – LED

- Decorative, low-profile, architectural design
- Factory-installed photocell included
- Standard operating temperature of 32°F to 122°F
- Ni-Cad battery provides 90 minutes of emergency operation

Fixture Standards: AC operation with emergency battery backup ▪ Dark bronze housing ▪ 120 & 277 dual voltage

LED SERIES	DESCRIPTION
EMER/DECO-DBR-QS-D	Die-cast aluminum housing



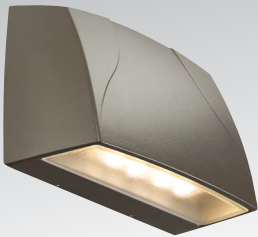
VWMH Horizontal Architectural Mini – LED

- Provides security and accent lighting
- Designed to blend with a variety of architectural styles
- Uplight or downlight applications
- Up to 1,700 lumens
- Made Right Here® in the USA



Fixture Standards: 80 CRI ▪ Lambertian distribution ▪ Dark bronze housing ▪ Clear glass lens ▪ Dimming for 0-10V applications ▪ Universal voltage

LED SERIES	DESCRIPTION
VWMH-L10/840-TL-DBZ-CGL-QS-DIM-UNV	1,000 Lumens ▪ 4000K CCT
VWMH-L17/840-TL-DBZ-CGL-QS-DIM-UNV	1,700 Lumens ▪ 4000K CCT



VWMV Vertical Architectural Mini – LED

- Provides security and accent lighting
- Designed to blend with a variety of architectural styles
- Uplight or downlight applications
- Up to 1,700 lumens
- Made Right Here® in the USA



Fixture Standards: 80 CRI ▪ Lambertian distribution ▪ Dark bronze housing ▪ Clear glass lens ▪ Dimming for 0-10V applications ▪ Universal voltage

LED SERIES	DESCRIPTION
VWMV-L10/840-TL-DBZ-CGL-QS-DIM-UNV	1,000 Lumen ▪ 4000K CCT
VWMV-L17/840-TL-DBZ-CGL-QS-DIM-UNV	1,700 Lumens ▪ 4000K CCT



H.E. WILLIAMS, INC.

831 West Fairview Ave | Carthage, MO 64836

417-358-4065

hew.com

HEW.300119.JL REV.04/17/20