

Replacement item number is 230.21R

Backplate, short 230.21PCB

in B-technology made of polyamide, solid colour, high-gloss surface, and for handle diameter 21.3 mm
Composite synthetic material and steel backplate substructure, integrated spring-assisted restraining "hold-up" module, can be used for left or right-hand.
Concealed, non-loosening screwed joint with 5 mm Spax screws as well as the pivot disappearing into the door leaf.

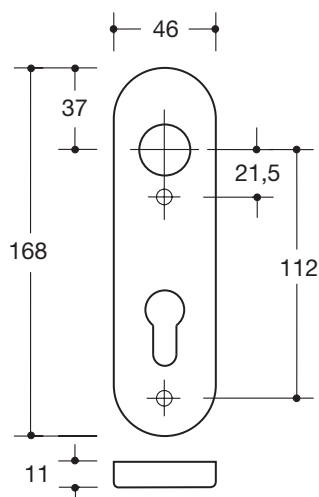
Backplate cap 46 x 168 mm, 10.5 mm high, flat, 1.5 mm wall thickness.

supplied incl. screws

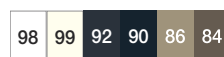
Article no.: HEWI 230.21PCB

Dimensions

Product is eliminated from December 31st, 2020



Colors



Polyamide

Technical information subject to alteration, March 19th, 2020

HEWI Inc.
350 Fifth Avenue, Suite 5220 Phone: 866 853-8003
New York, NY 10118

hewi@hewi.us
www.hewi.com