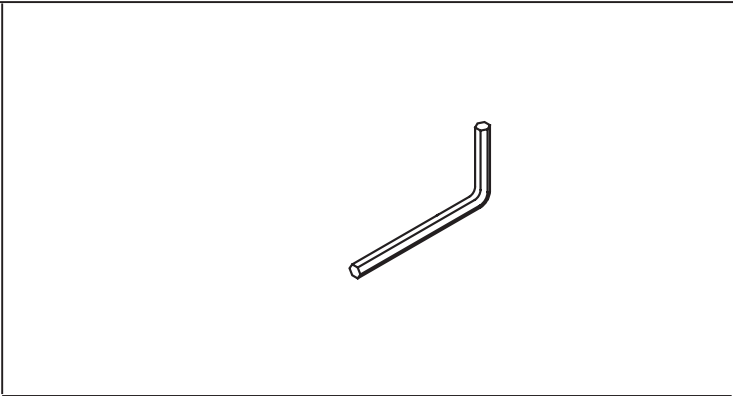


- Ⓓ Montageanleitung
- ⒼⒷ Installation instructions
- Ⓕ Montage
- ⒹⒻ Montage van
- Ⓘ Istruzioni di montaggio
- Ⓔ Montaje instrucciones
- Ⓐ Instrukcja montażu

Glastürdrücker ohne Rosetten
Glass door fitting without rosette

111G01.100	111XAG01.100	180CAG01.100
111G01.200	111XAG01.600	
111G01.500	160XAG01.100	
130G01.100	160XAG01.200	
130G01.300	170XAG01.100	

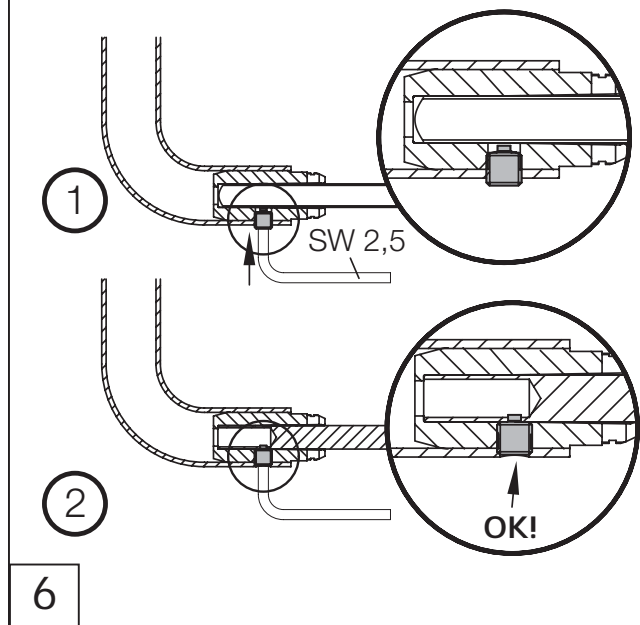
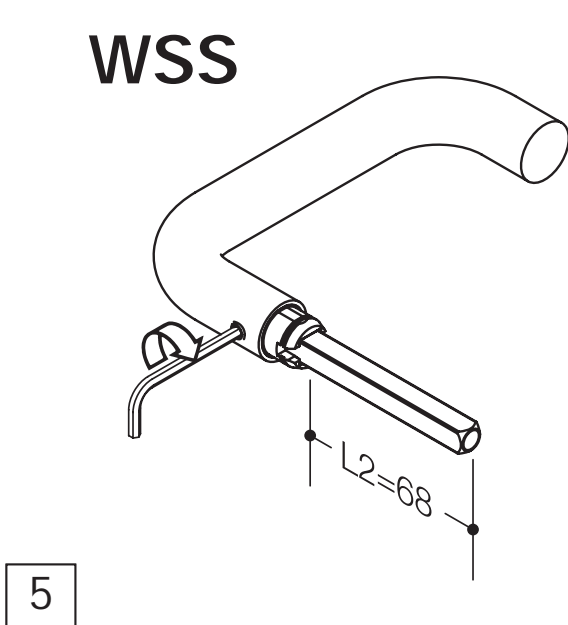
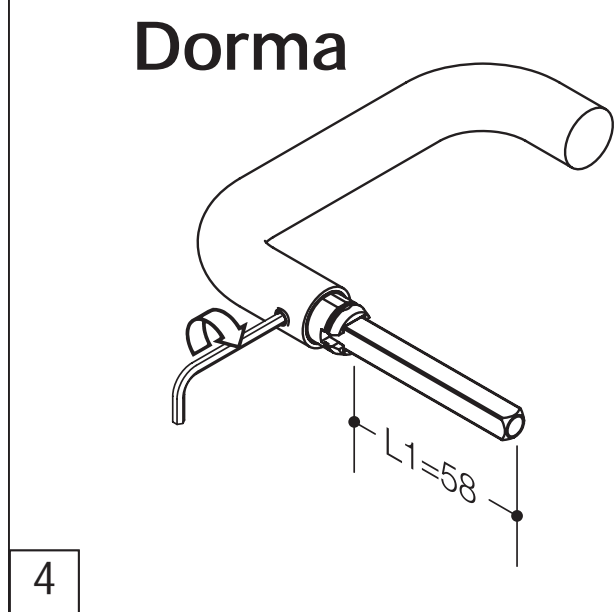
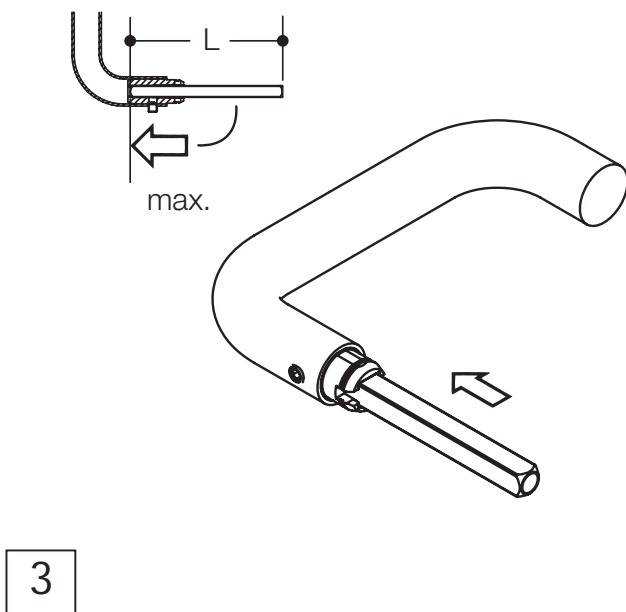
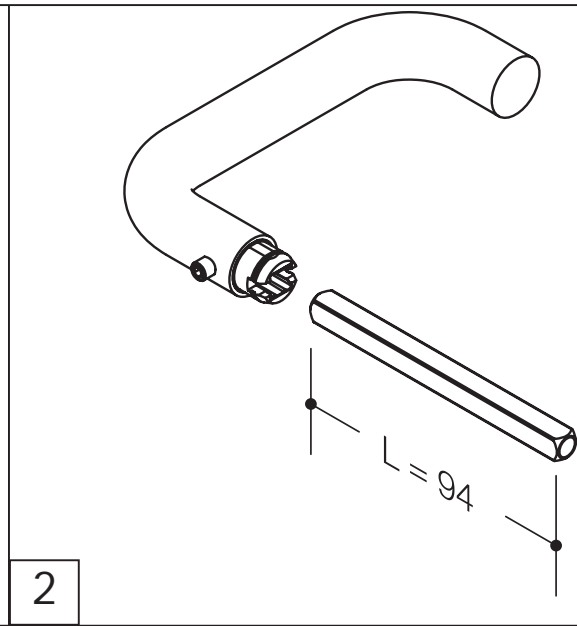
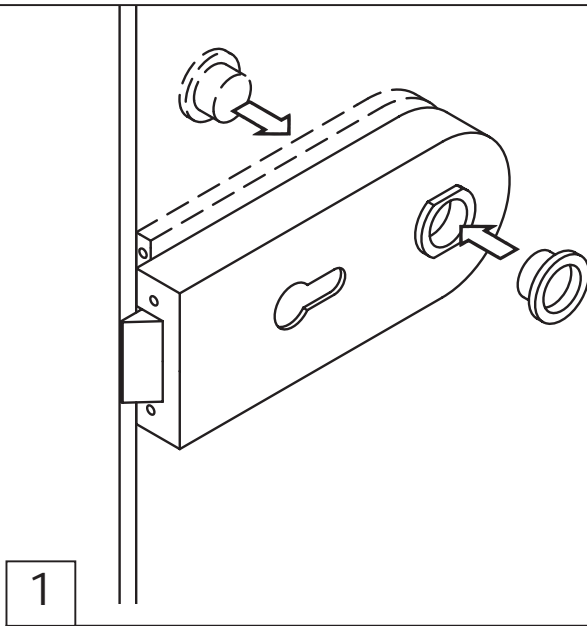
111	111X...	181C...
111.23	116X...	
115.23	161X...	
131	162X...	
133	171X...	



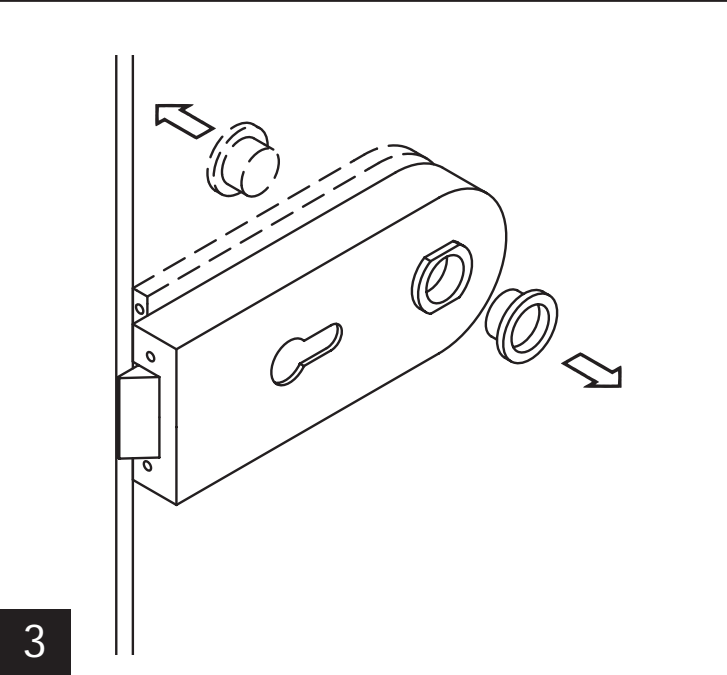
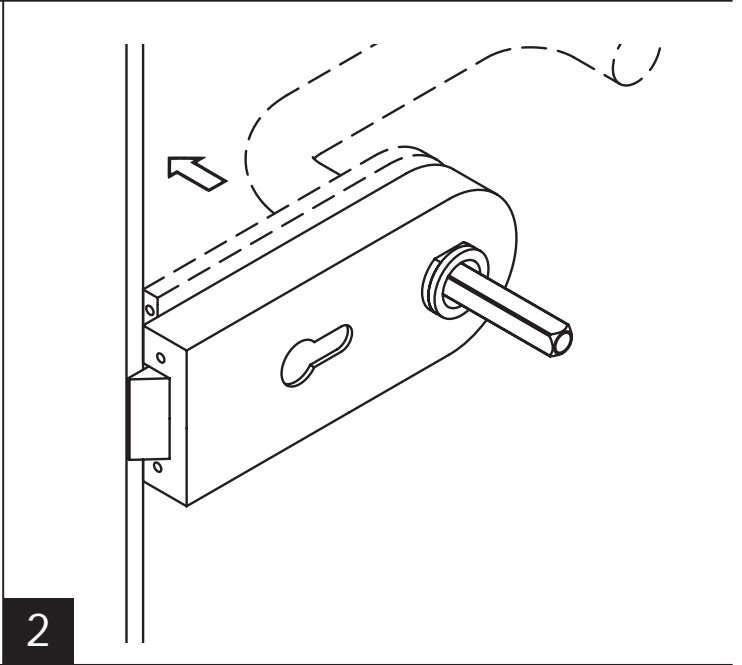
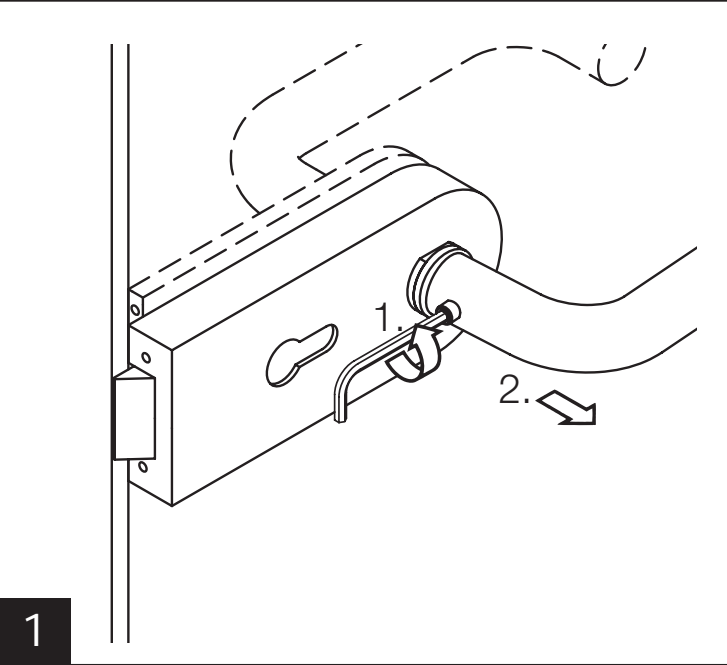
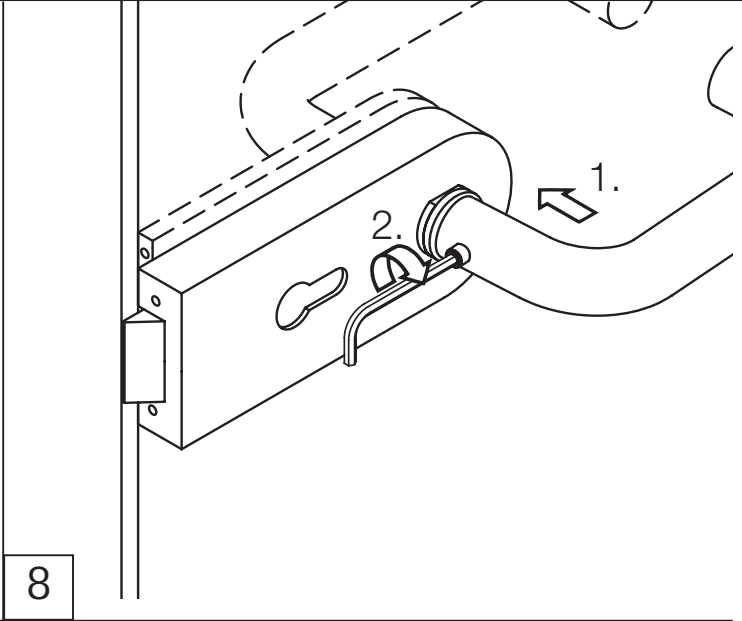
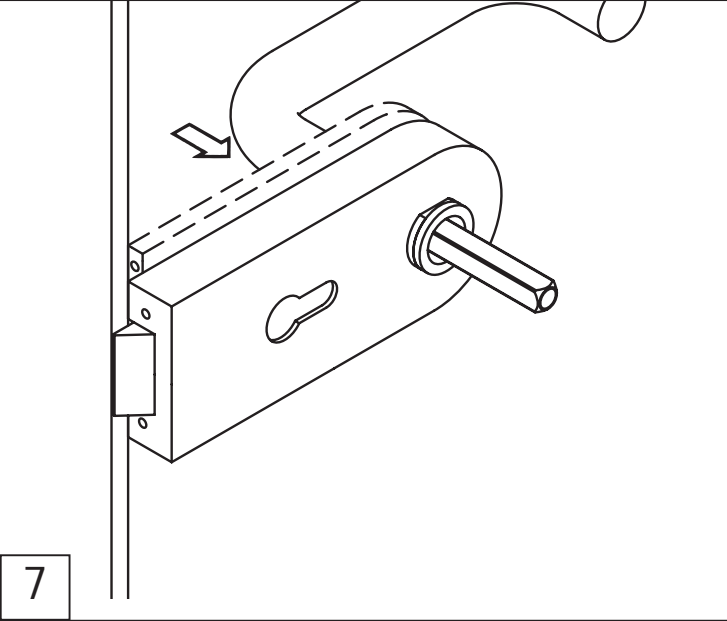
für Glastürschlösser von
WSS - Atelier F/R Business Line und Studio Privat
Line von Dorma - Junior Office und Studio
Rondo/Classic.

Hinweis

Die Glastürgarnituren wurden mit den oben genann-
ten Schlössern überprüft.



Glastürdrücker ohne Rosetten
Glass door fitting without rosette



HEWI

www.hewi.de

Deutschland

HEWI Heinrich Wilke GmbH

Postfach 1260

D-34442 Bad Arolsen

Telefon: +49 5691 82-0

Telefax: +49 5691 82-319

info@hewi.de

www.hewi.de