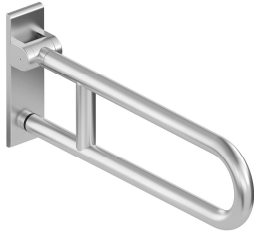


Product data sheet

Range 805 Classic mobile hinged support rail (rotatable) 805.50.131

HEWI



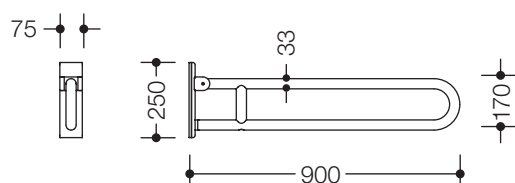
Similar picture

Range 805 Classic mobile hinged support rail (rotatable) 805.50.131

- two parallel rails running one above the other joined by a connecting bend (formed of a continuous tube)
- for holding on to and providing support
- weight capacity 220 lbs (100 kg)
- can be folded upwards and, folded downwards with braking mechanism, in raised position can be turned to left or right towards the wall
- for mobile use
- for easy and flexible retrofitting on existing, preassembled mounting plate 950.50.016, must be ordered separately
- toolless and quick installation by simple attachment of the mobile hinged support rail
- secured by fixing screw to prevent unintentional removal
- 35 7/16 inch (900 mm) projection, 9 13/16 inch (250 mm) high and 2 15/16 inch (75 mm) deep, 1 5/16 inch (33 mm) rail diameter, tube thickness 2 mm
- made of high-quality stainless steel, satin surface finish
- toilet roll holder 805.50.015 as well as WC flushing mechanism (radio-controlled) 805.50.060 and floor supports 950.50.022XA and 950.50.024XA for retrofitting
- CE marking according to Directive 93/42 / EEC
- fulfils the ÖNORM B1600/1601 requirements



Dimensions



Surface

XA | satin

Stainless steel

Technical information subject to alteration, March 20th, 2020

HEWI Inc.
350 Fifth Avenue, Suite 5220 Phone: 866 853-8003
New York, NY 10118

hewi@hewi.us
www.hewi.com