

Sliding Pocket Wall, 2 Panels

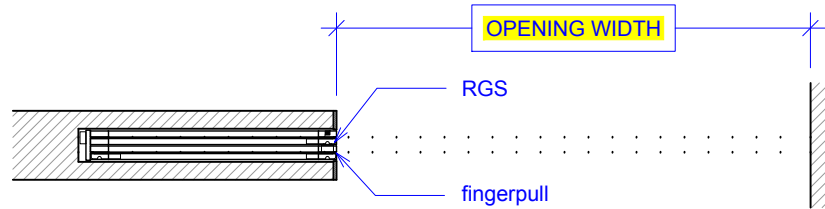
(SPW2-RD)

ELEVATION

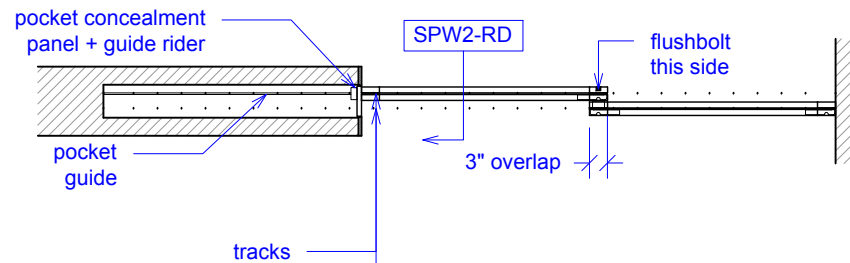
RAYDOOR STANDARD
SYSTEM DRAWINGS
©2020



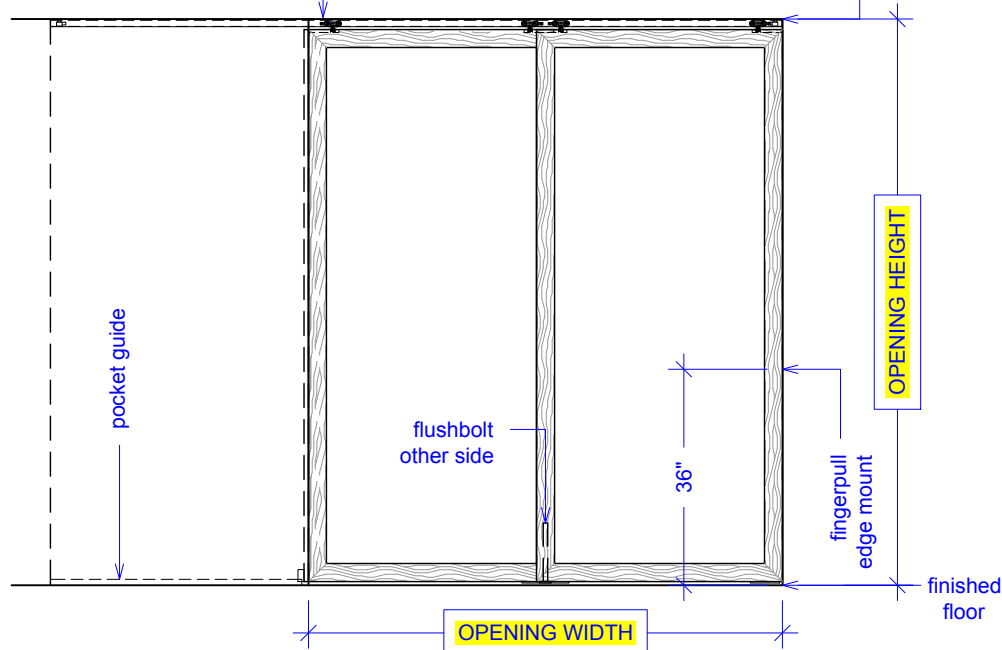
PLAN: open



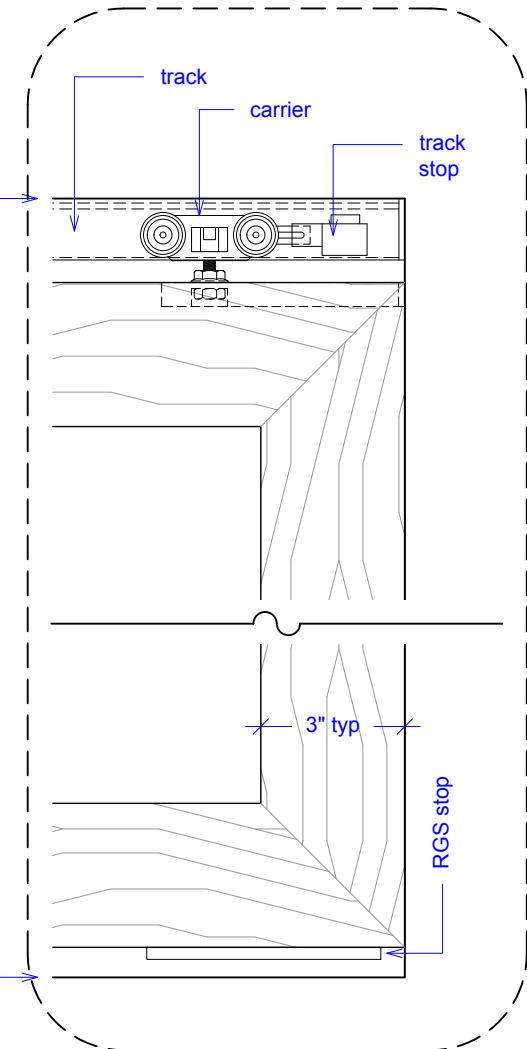
PLAN: closed



ELEVATION: closed



YOUR OPENING HEIGHT = PANEL + $\frac{3}{8}$ "
YOUR OPENING WIDTH = (2 x PANEL) - 3"

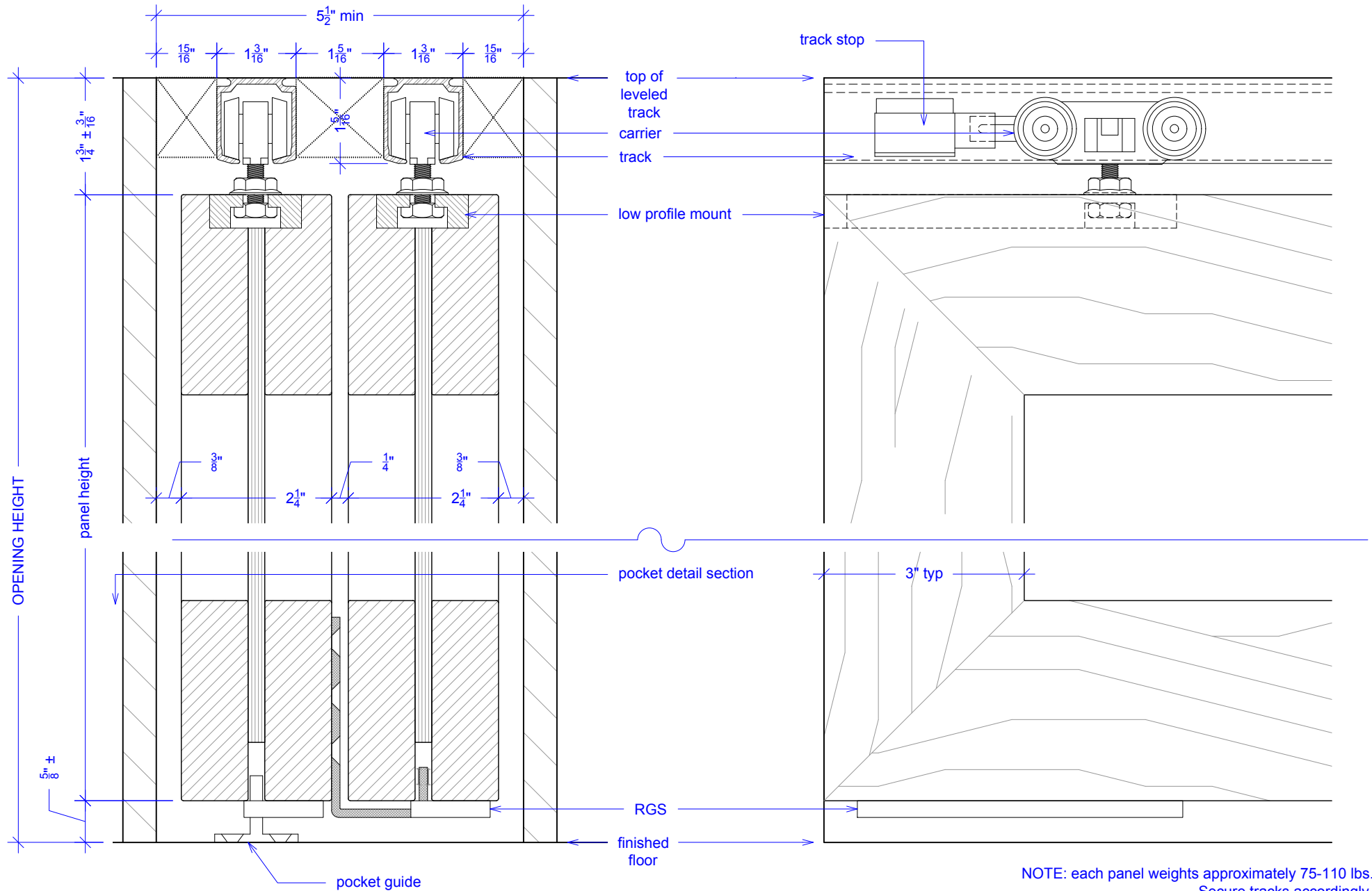
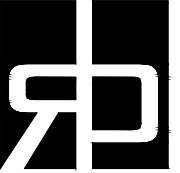


Sliding Pocket Wall, 2 Panels

(SPW2-RD)

SECTION

RAYDOOR STANDARD
SYSTEM DRAWINGS
©2020



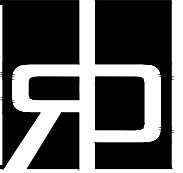
NOTE: each panel weights approximately 75-110 lbs.
Secure tracks accordingly.

Sliding Pocket Wall, 2 Panels

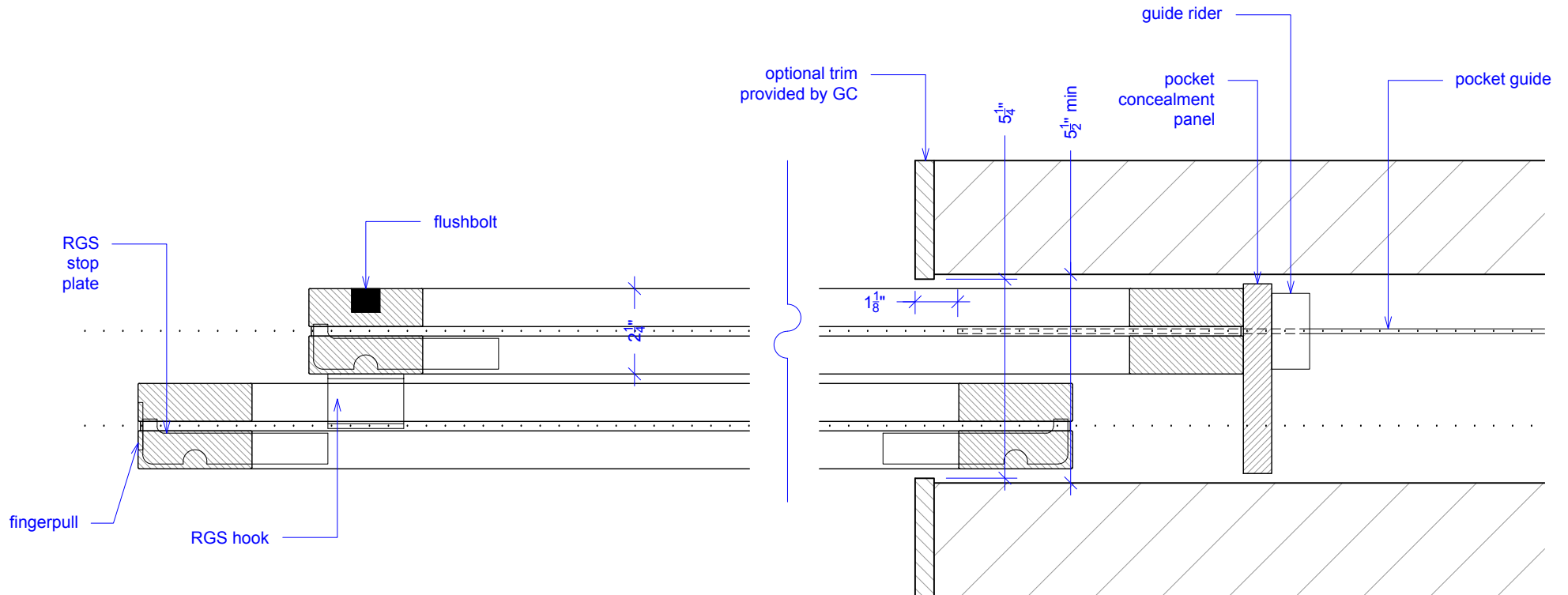
(SPW2-RD)

POCKET DETAIL

RAYDOOR STANDARD
SYSTEM DRAWINGS
©2020



NOTE: pocket depth should be 2"
deeper than width of doors



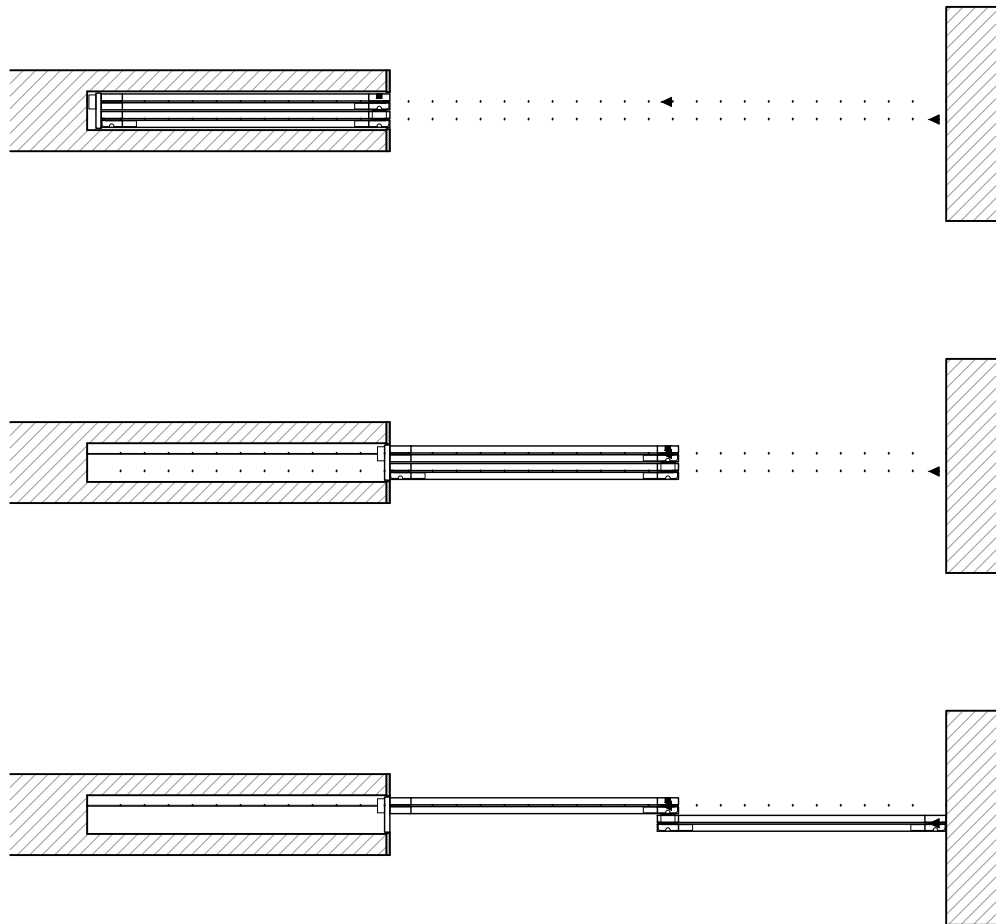
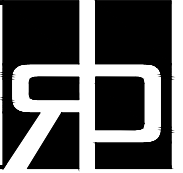
Guide rider is a block with a slit for the pocket guide; it allows for full extension, attach to bottom of concealment panel.

Sliding Pocket Wall, 2 Panels

(SPW2-RD)

OPERATION OVERVIEW

RAYDOOR STANDARD
SYSTEM DRAWINGS
©2020



KEY:

□ RGS hook

└ RGS stop

— pocket guide

▶ track stop