

# Sliding Pocket Wall w/ Soft-Close, 4 Panels

(SPW4-SC)

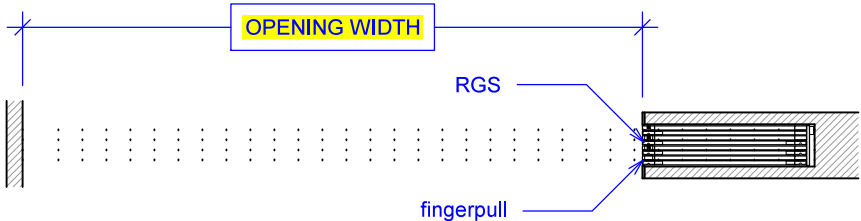
ELEVATION

RAYDOOR STANDARD  
SYSTEM DRAWINGS  
©2020

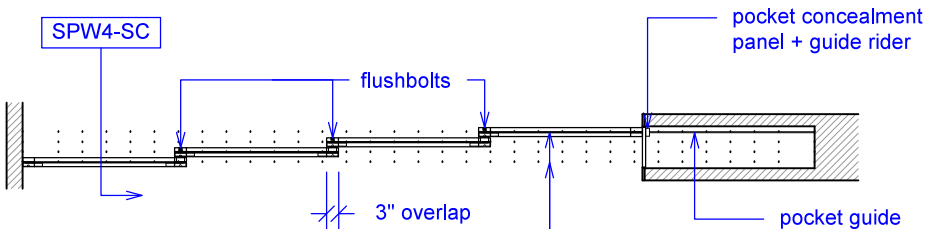


YOUR OPENING HEIGHT = PANEL + 2 $\frac{3}{4}$ "  
YOUR OPENING WIDTH = (4 x PANEL) - 9"

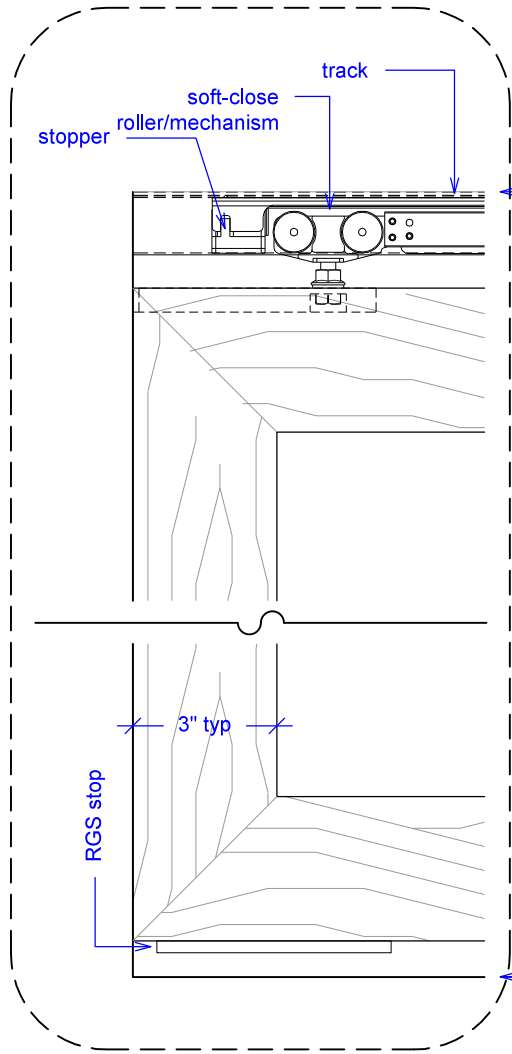
PLAN: open



PLAN: closed



ELEVATION: closed

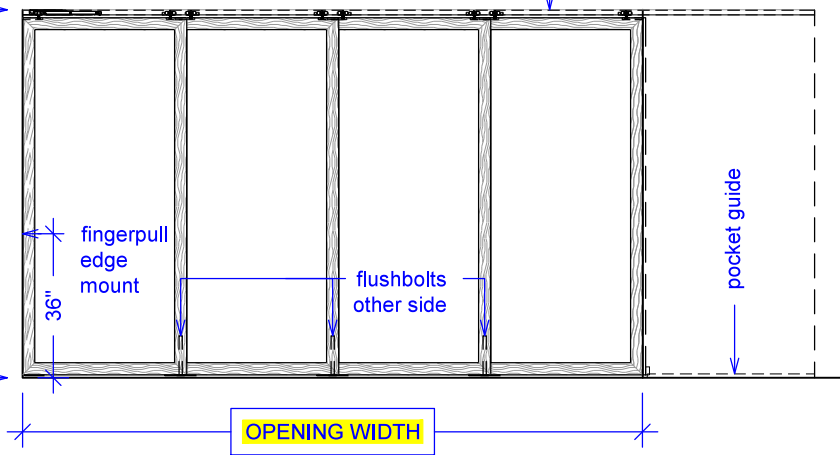


top of leveled track

finished floor

OPENING HEIGHT

OPENING WIDTH

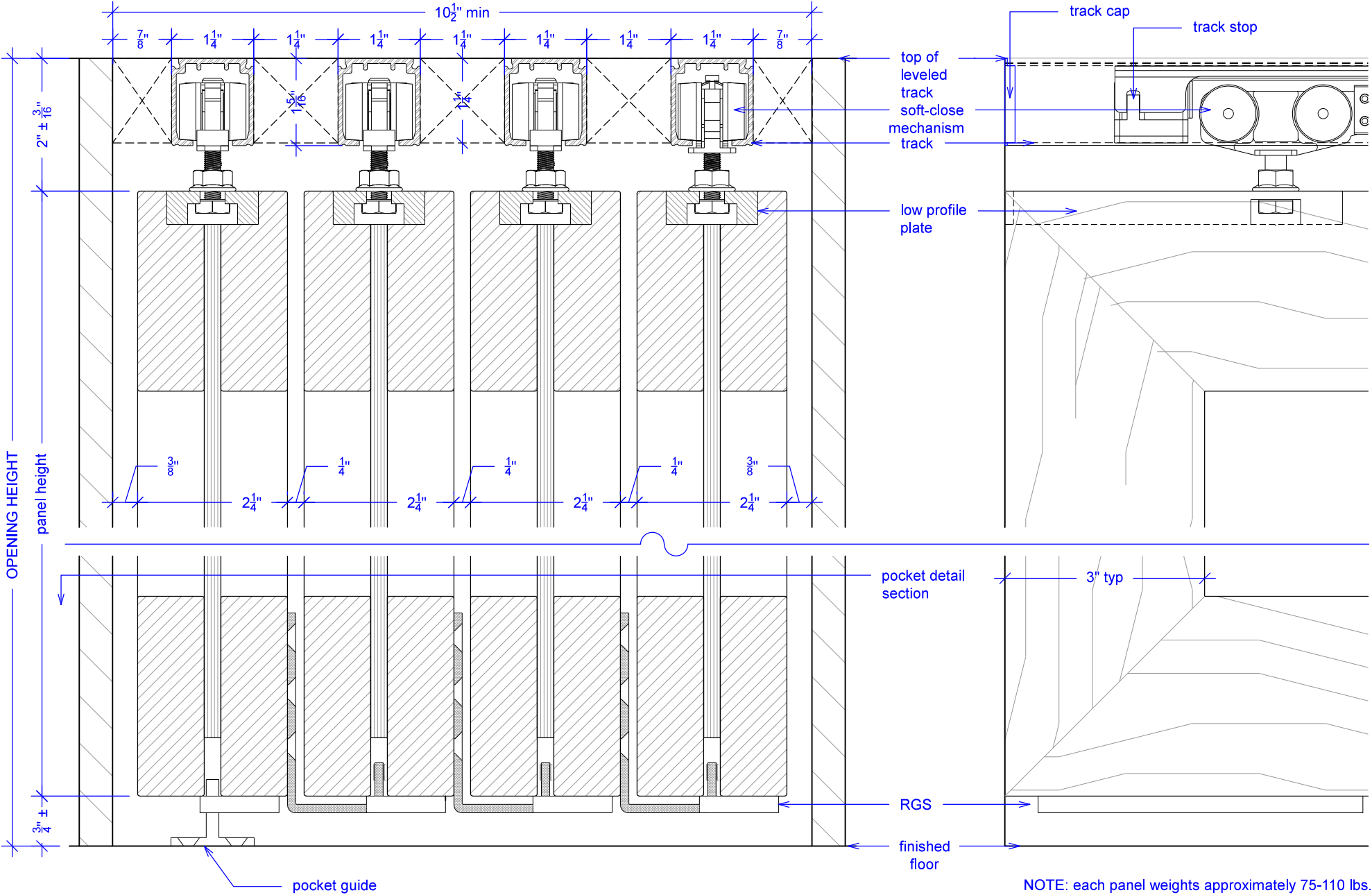


# Sliding Pocket Wall w/ Soft-Close, 4 Panels

(SPW4-SC)

## SECTION

RAYDOOR STANDARD  
SYSTEM DRAWINGS  
©2020



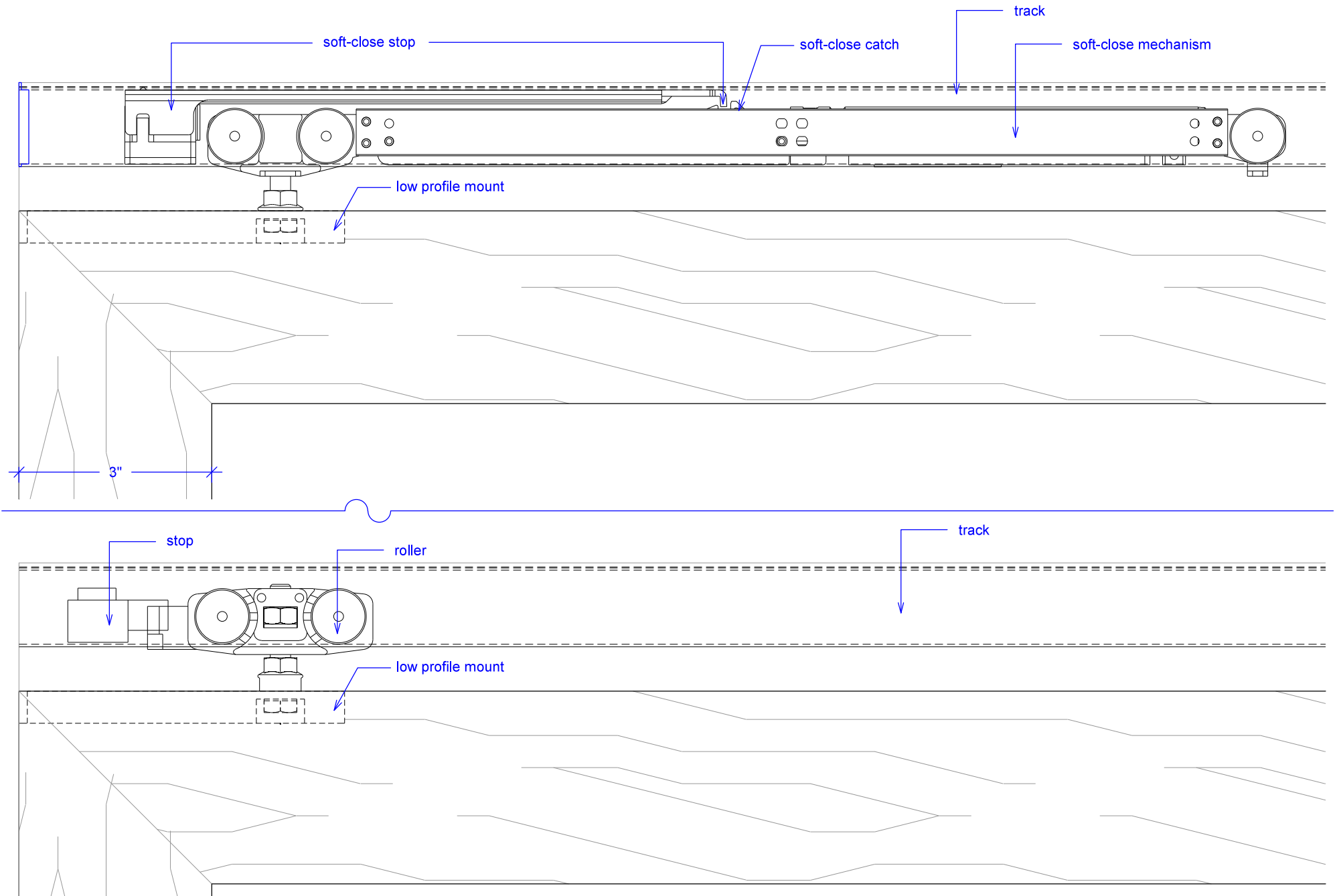
NOTE: each panel weights approximately 75-110 lbs.  
Secure tracks accordingly.

# Sliding Pocket Wall w/ Soft-Close, 4 Panels

(SPW4-SC)

## SOFT-CLOSE HARDWARE

RAYDOOR STANDARD  
SYSTEM DRAWINGS  
©2020



# Sliding Pocket Wall w/ Soft-Close, 4 Panels

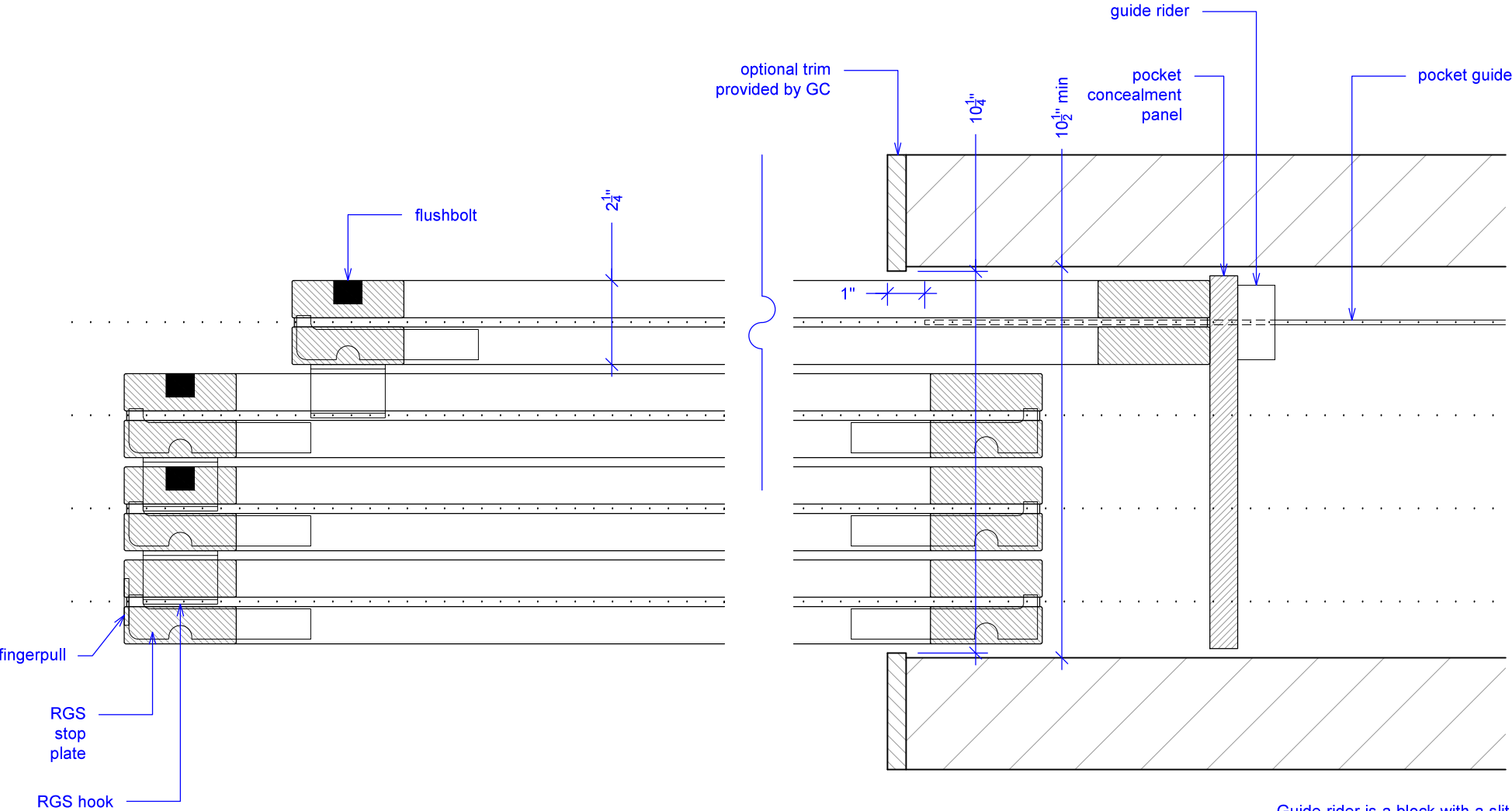
(SPW4-SC)

## POCKET DETAIL

RAYDOOR STANDARD  
SYSTEM DRAWINGS  
©2020



NOTE: pocket depth should be 2"  
deeper than width of doors



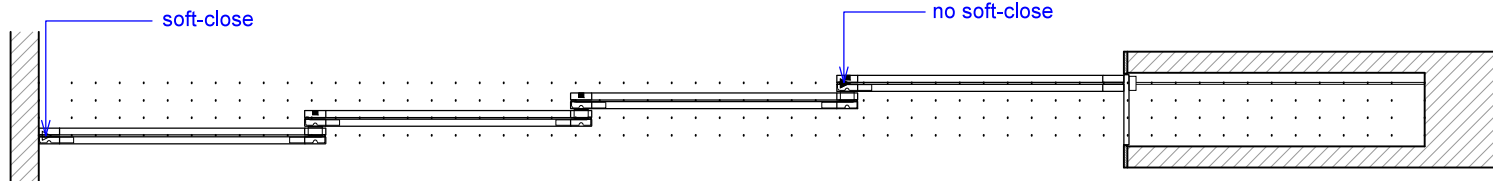
Guide rider is a block with a slit for the pocket guide; it allows for full extension, attach to bottom of concealment panel.

# Sliding Pocket Wall w/ Soft-Close, 4 Panels

(SPW4-SC)

## OPERATION OVERVIEW

RAYDOOR STANDARD  
SYSTEM DRAWINGS  
©2020



### KEY:

□ RGS hook

└─ RGS stop

— pocket guide

▶ track stop

▷ stopper / release device