

# Sliding Pocket Wall, 4 Panels, Symmetrical

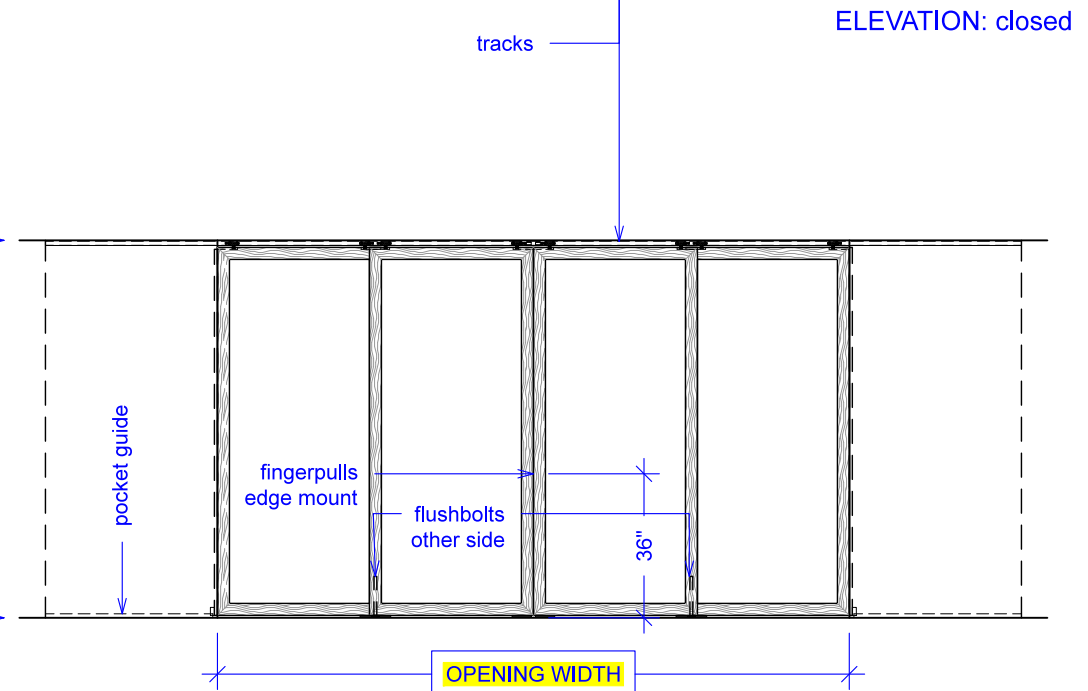
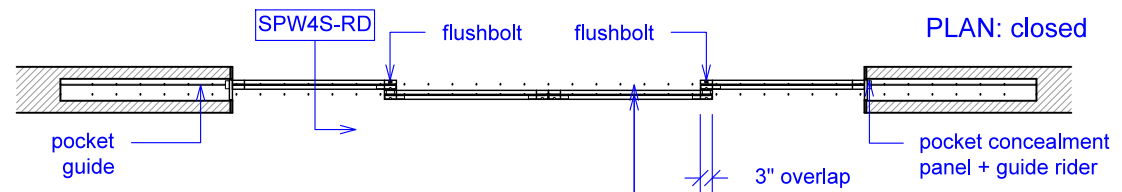
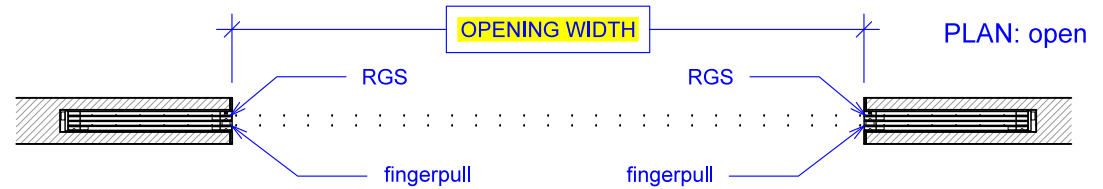
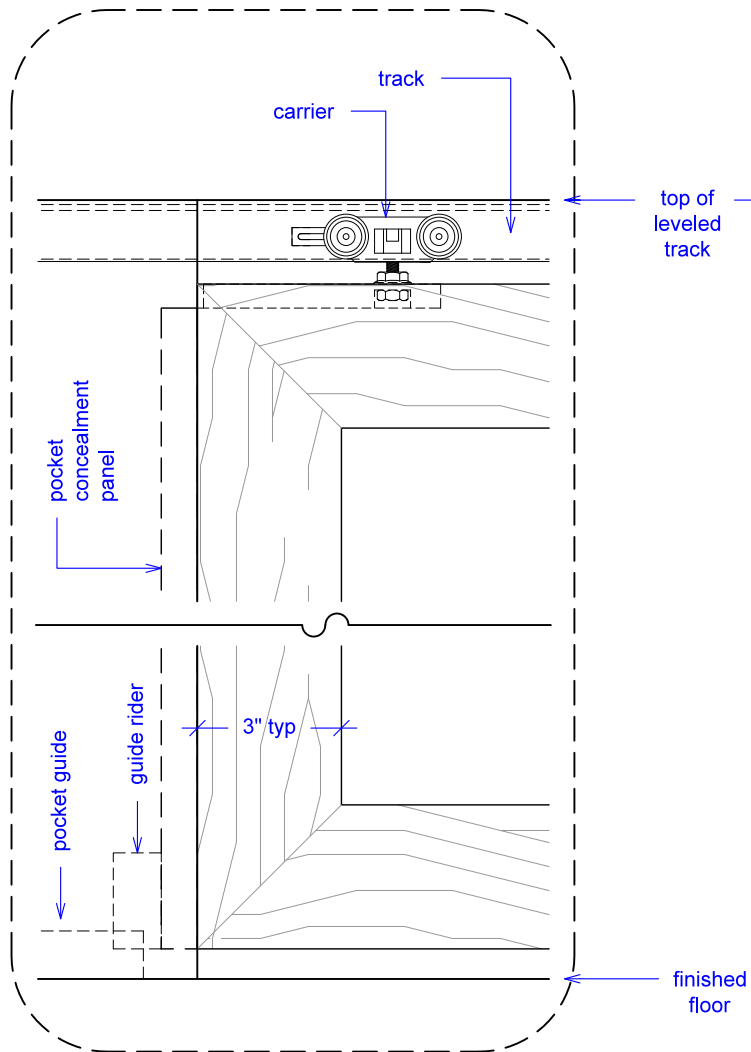
(SPW4S-RD)

ELEVATION

RAYDOOR STANDARD  
SYSTEM DRAWINGS  
©2020



YOUR OPENING HEIGHT = PANEL +  $2\frac{3}{8}$ "  
YOUR OPENING WIDTH = (4 x PANEL) - 6"





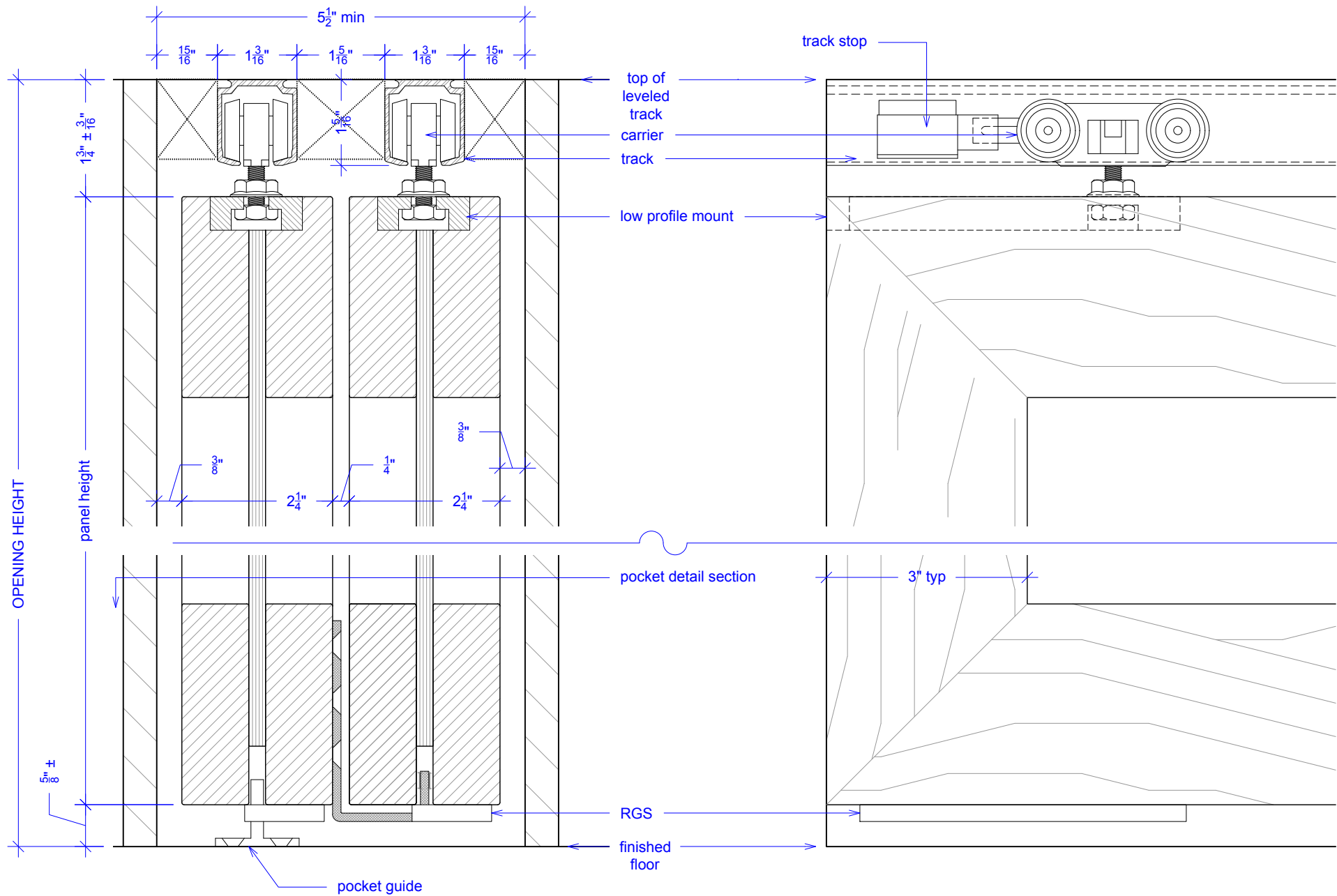
# SYSTEM SECTION / DETAILS

## SPW4S-XRDLP-225

RAYDOOR®

NOTE: each panel weighs approximately 75-110 lbs.  
Secure tracks accordingly.

Scale: half



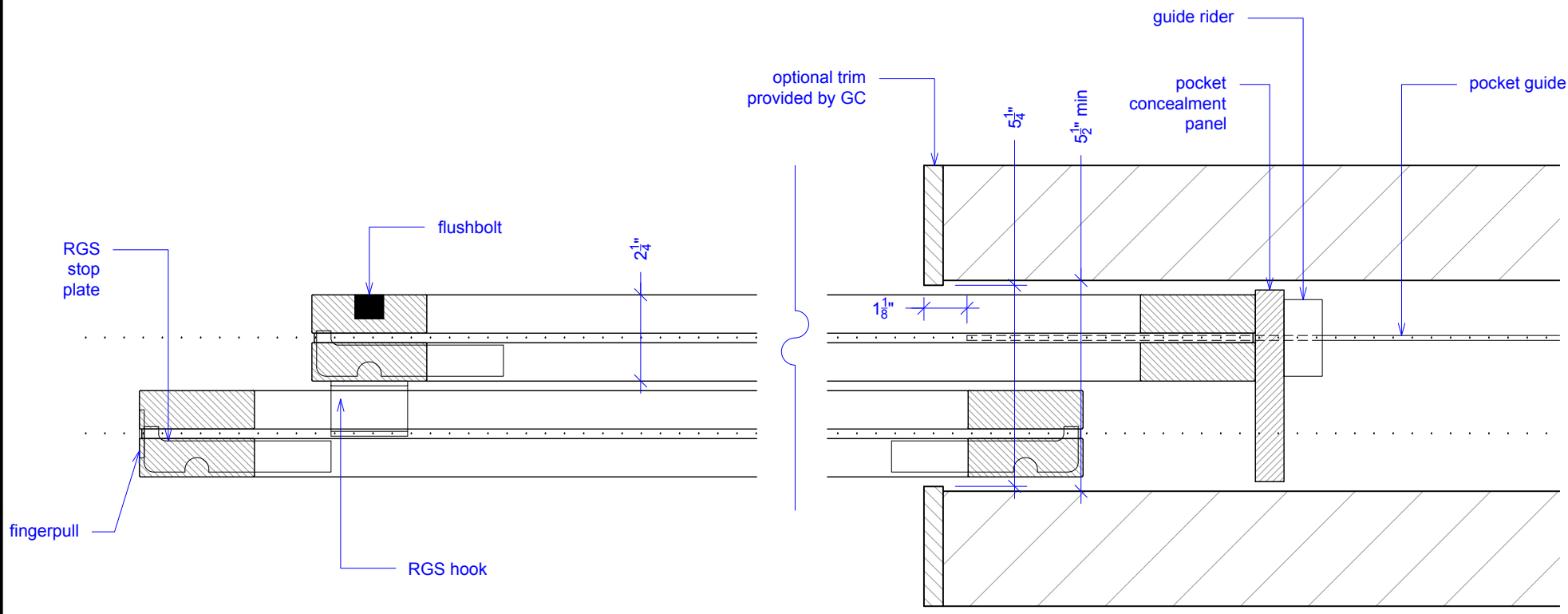


**POCKET DETAIL**  
**SPW4S-RD-225**  
RAYDOOR®

NOTE: each panel weighs approximately 75-110 lbs.  
Secure tracks accordingly.

Scale: NTS

NOTE: pocket depth should be 2"  
deeper than width of doors



Guide rider is a block with a slit for the pocket guide; it allows for full extension, attach to bottom of concealment panel.



# OPERATION OVERVIEW

SPW4S-RD

RAYDOOR®

NOTE: each panel weights approximately 75-110 lbs.  
Secure tracks accordingly.

Scale: NTS



## KEY:

□ RGS hook

└ RGS stop

— pocket guide

▶ track stop