

Sliding Wall, 5 Panels, Symmetrical

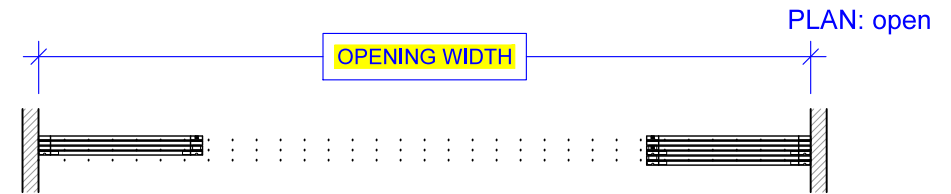
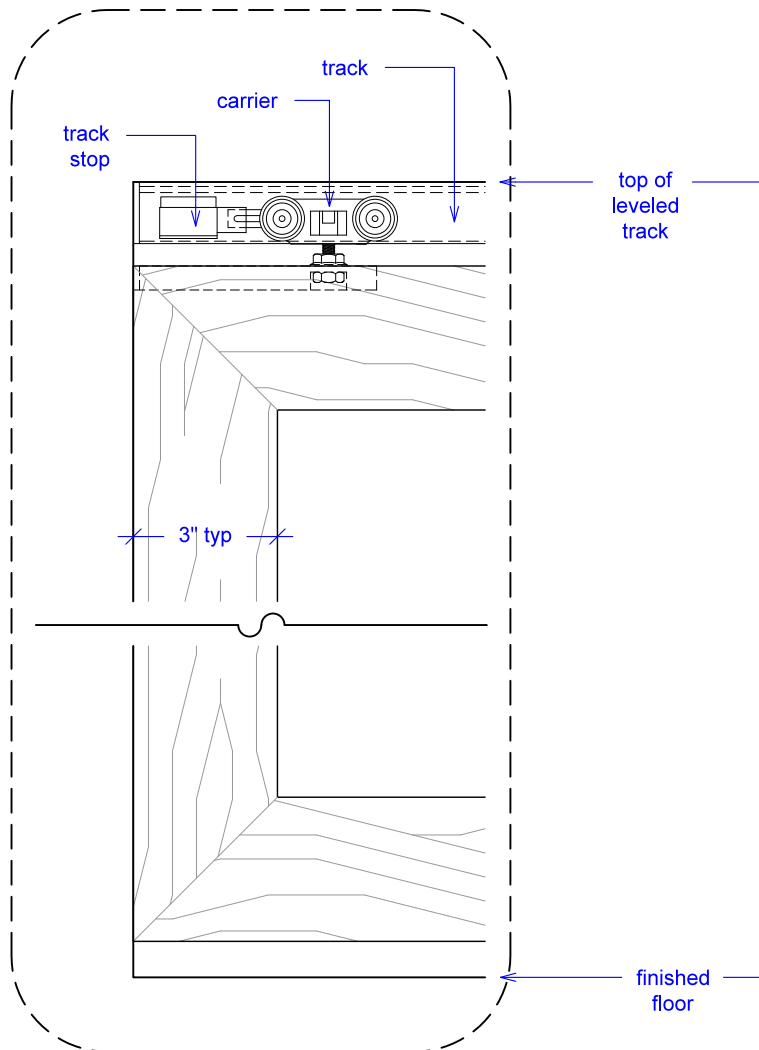
(SW5S-RD)

ELEVATION

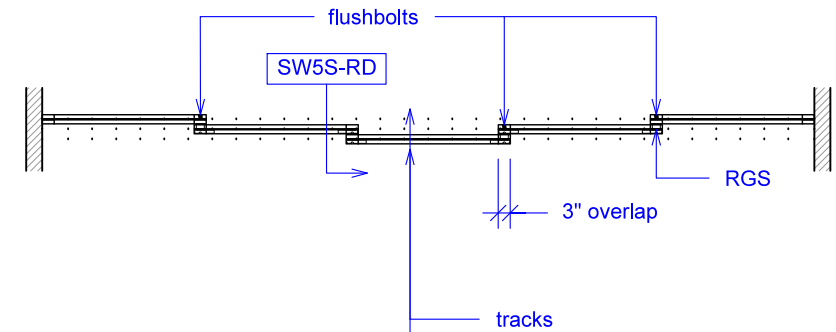
RAYDOOR STANDARD
SYSTEM DRAWINGS
©2020



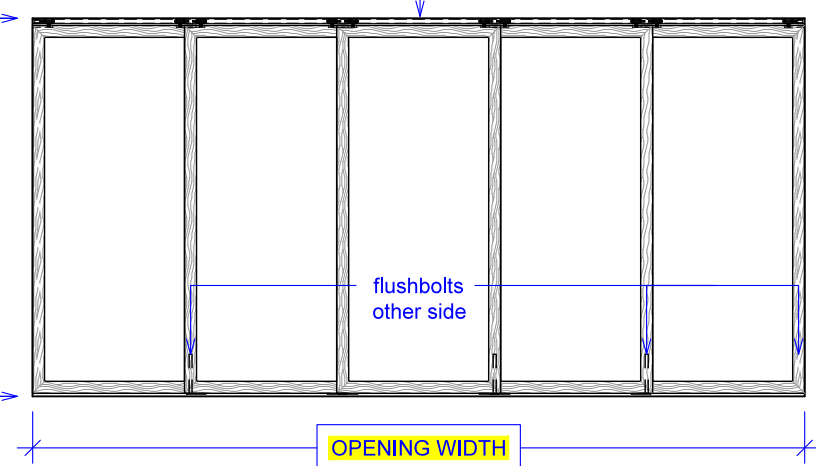
YOUR OPENING HEIGHT = PANEL + 2 $\frac{1}{2}$ "
YOUR OPENING WIDTH = (5 x PANEL) - 12"



PLAN: closed



ELEVATION: closed

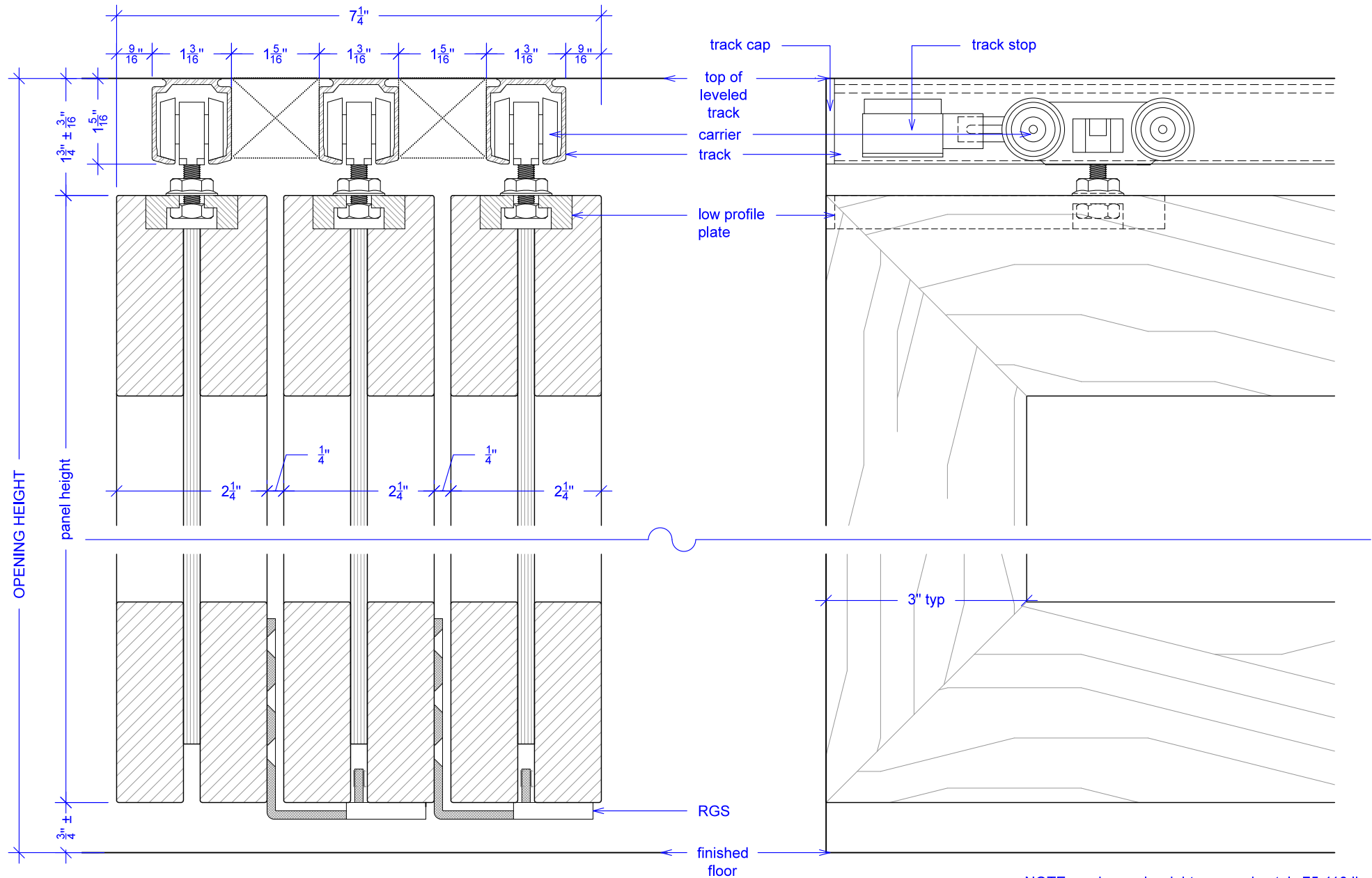


Sliding Wall, 5 Panels, Symmetrical

(SW5S-RD)

SECTION

RAYDOOR STANDARD
SYSTEM DRAWINGS
©2020

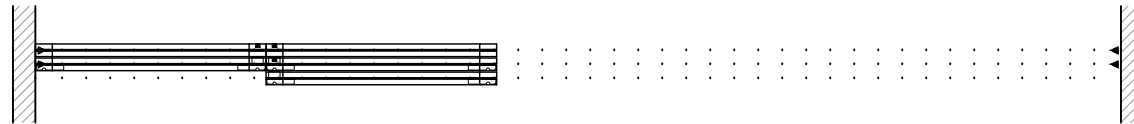


Sliding Wall, 5 Panels, Symmetrical

(SW5S-RD)

OPERATION OVERVIEW

RAYDOOR STANDARD
SYSTEM DRAWINGS
©2020



KEY:



track stop



RGS hook



RGS stop



flushbolt