

Sliding Wall, 6 Panels, Symmetrical

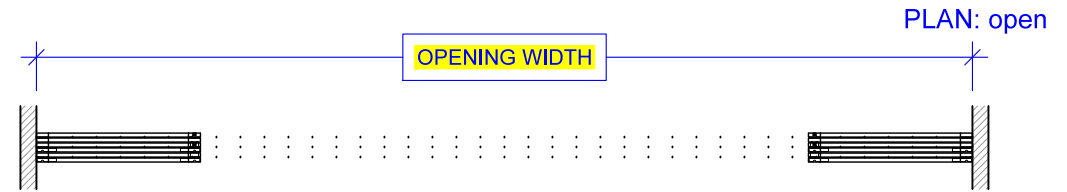
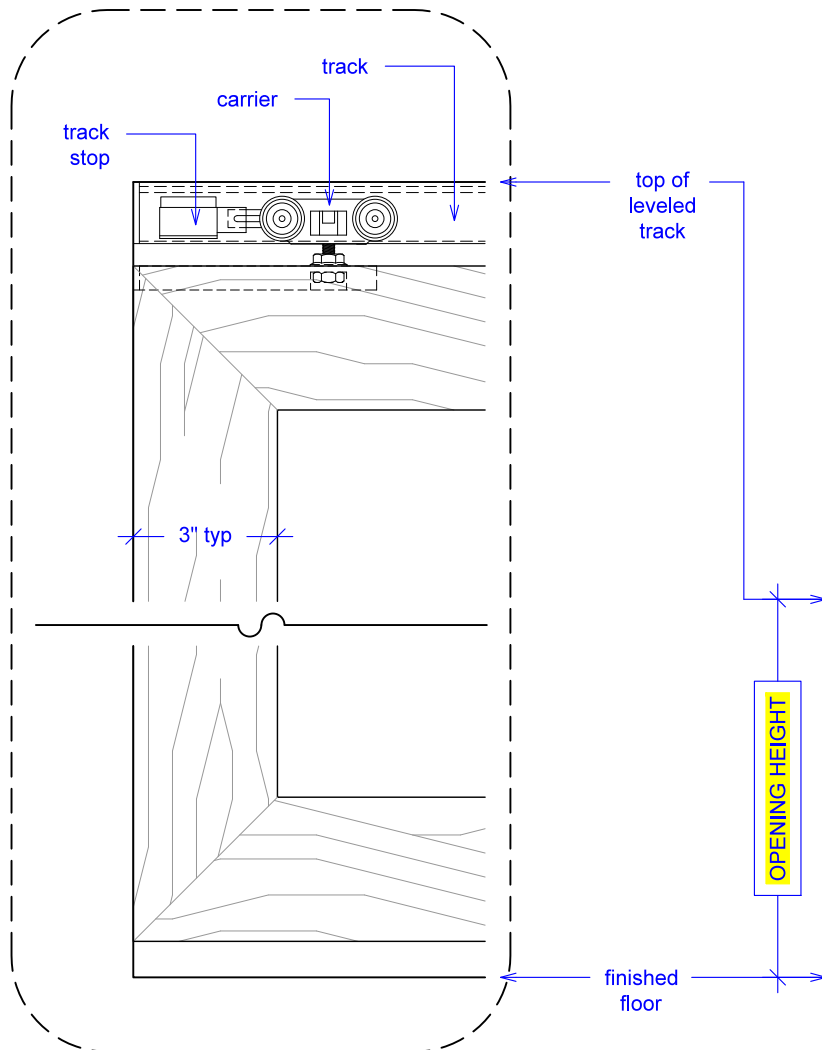
(SW6S-RD)

ELEVATION

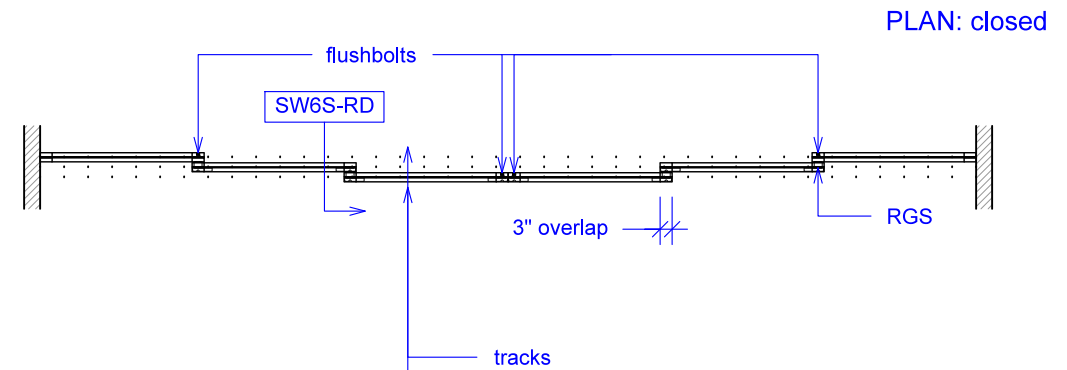
RAYDOOR STANDARD
SYSTEM DRAWINGS
©2020



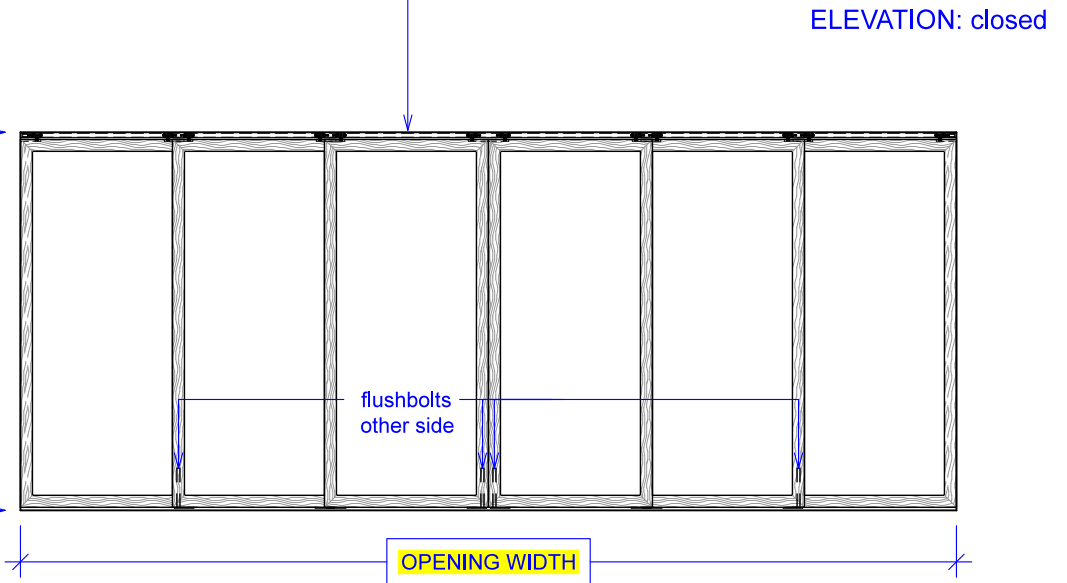
YOUR OPENING HEIGHT = PANEL + 2 $\frac{1}{2}$ "
YOUR OPENING WIDTH = (6 x PANEL) - 12"



PLAN: open



PLAN: closed



ELEVATION: closed

(SW6S-RD)
SECTION



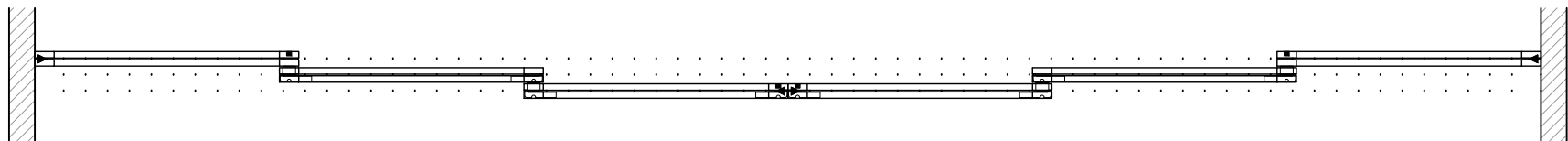
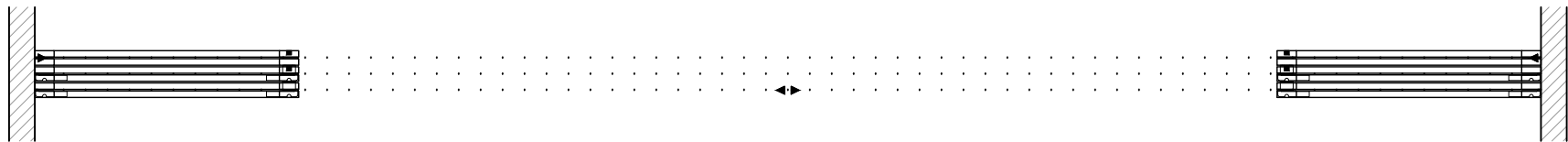
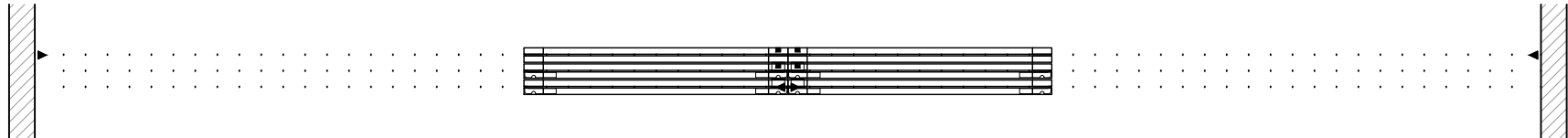
NOTE: each panel weights approximately 75-110 lbs.
Secure tracks accordingly.

Sliding Wall, 6 Panels, Symmetrical

(SW6S-RD)

OPERATION OVERVIEW

RAYDOOR STANDARD
SYSTEM DRAWINGS
©2020



KEY:



track stop



RGS hook



RGS stop



flushbolt