

Sliding Wing Wall, 4 Panels

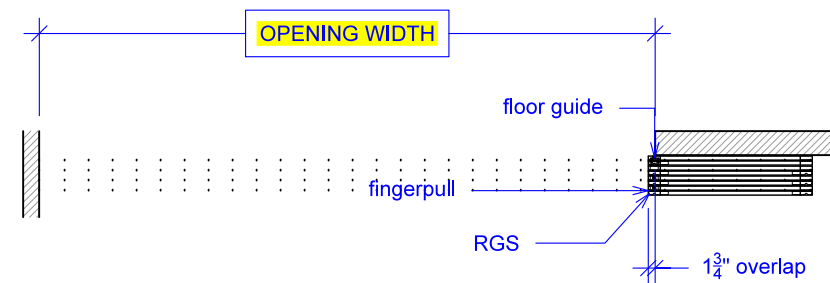
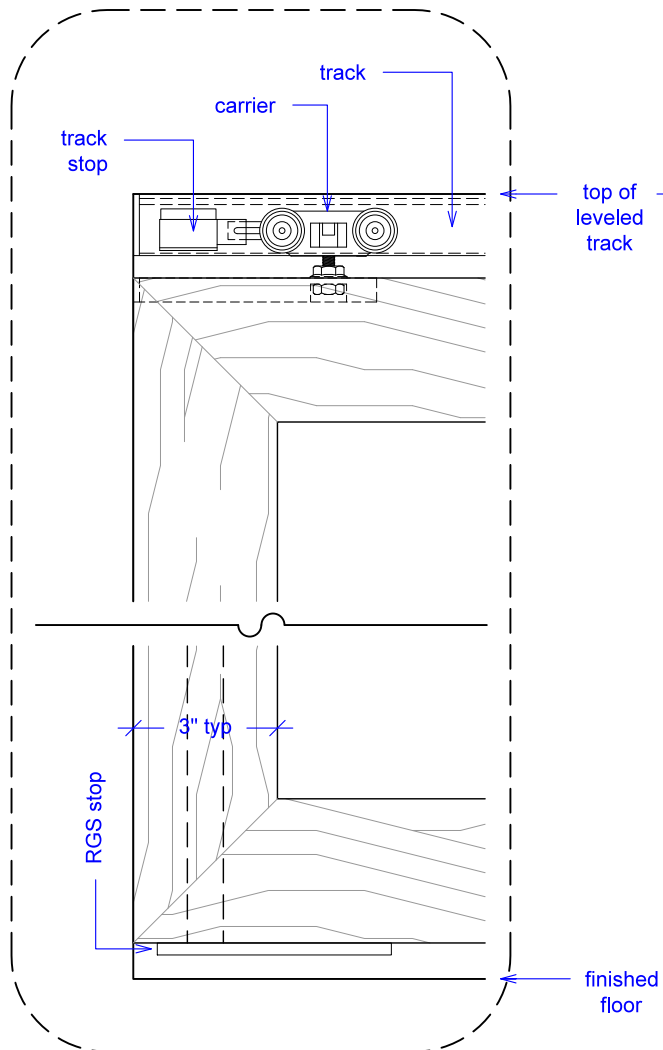
(SWW4-RD)

ELEVATION

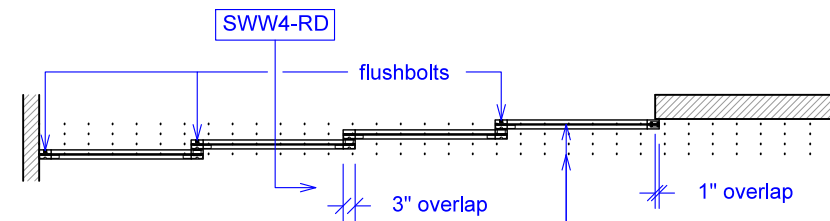
RAYDOOR STANDARD
SYSTEM DRAWINGS
©2020



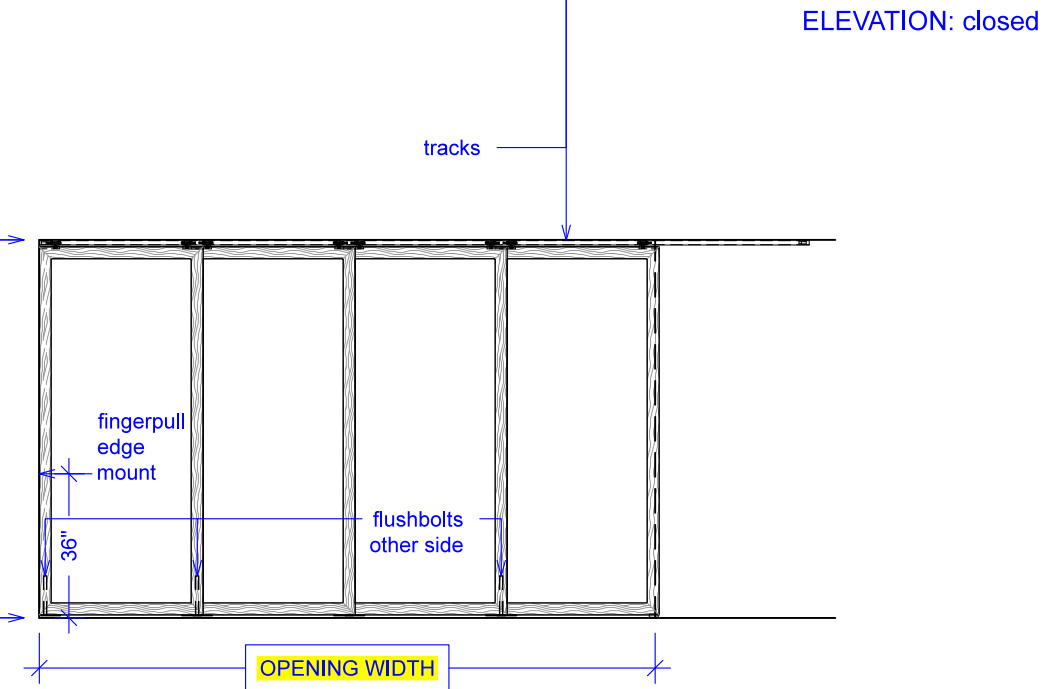
YOUR OPENING HEIGHT = PANEL + 2 $\frac{1}{2}$ "
YOUR OPENING WIDTH = (4 x PANEL) - 10"



PLAN: open



PLAN: closed



ELEVATION: closed

SECTION

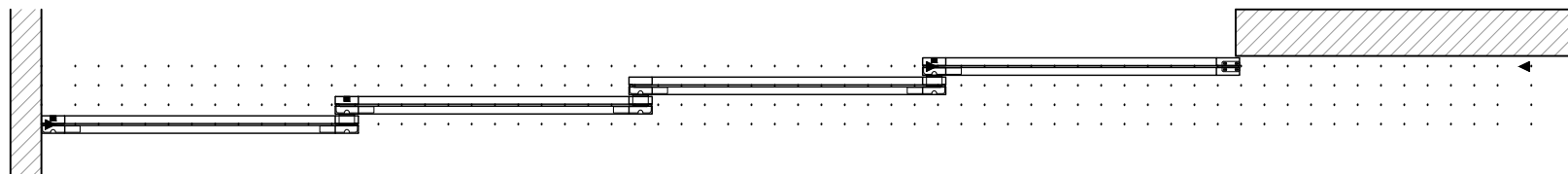
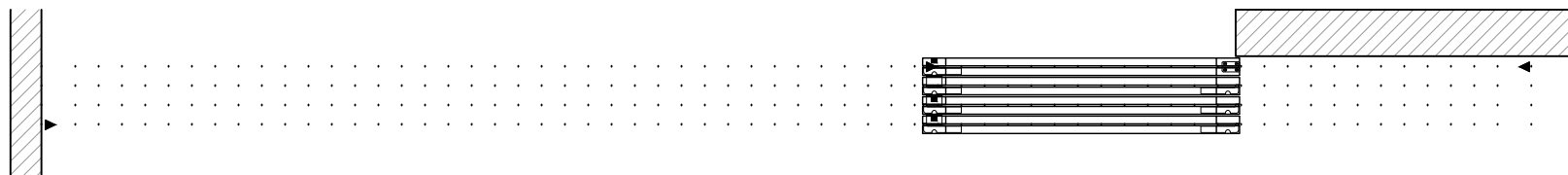
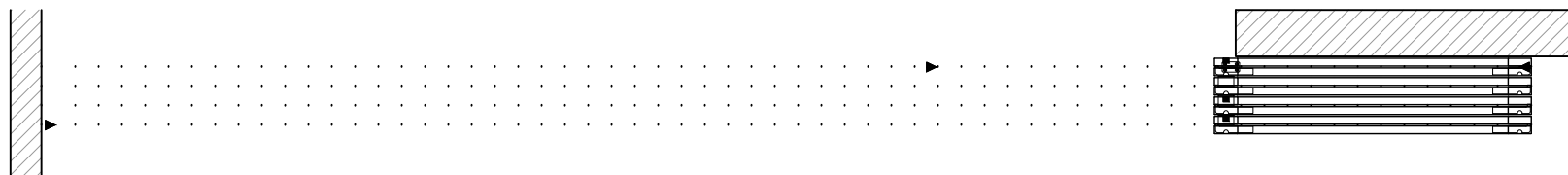


Sliding Wing Wall, 4 Panels

(SWW4-RD)

OPERATION OVERVIEW

RAYDOOR STANDARD
SYSTEM DRAWINGS
©2020



KEY:

▶ track stop

□ RGS hook

┌ RGS stop

■ flushbolt