

Sliding Wing Wall w/ Soft-Close, 4 Panels

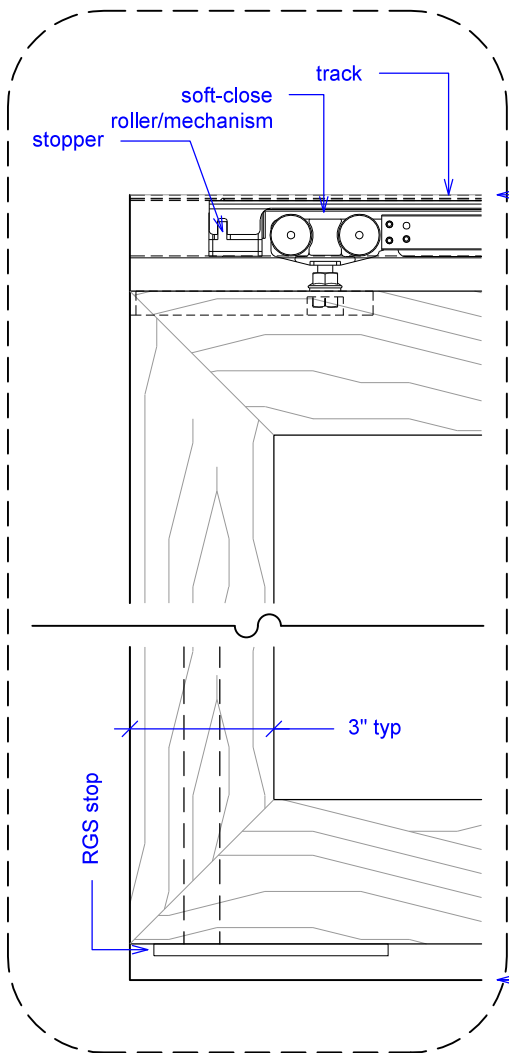
(SWW4-SC)

ELEVATION

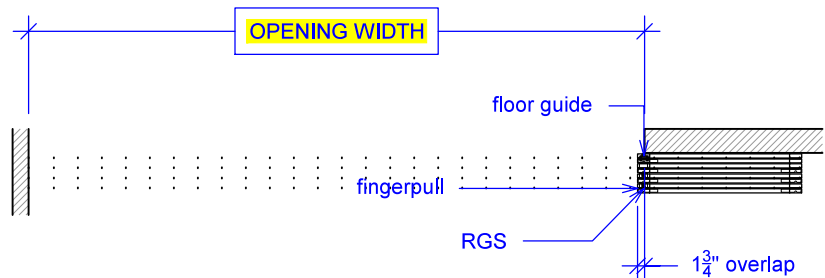
RAYDOOR STANDARD
SYSTEM DRAWINGS
©2020



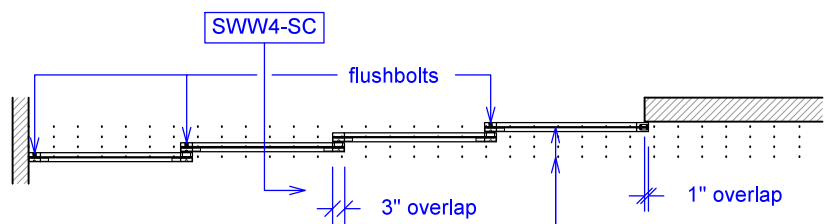
YOUR OPENING HEIGHT = PANEL + 2 $\frac{3}{4}$ "
YOUR OPENING WIDTH = (4 x PANEL) - 10"



top of leveled track

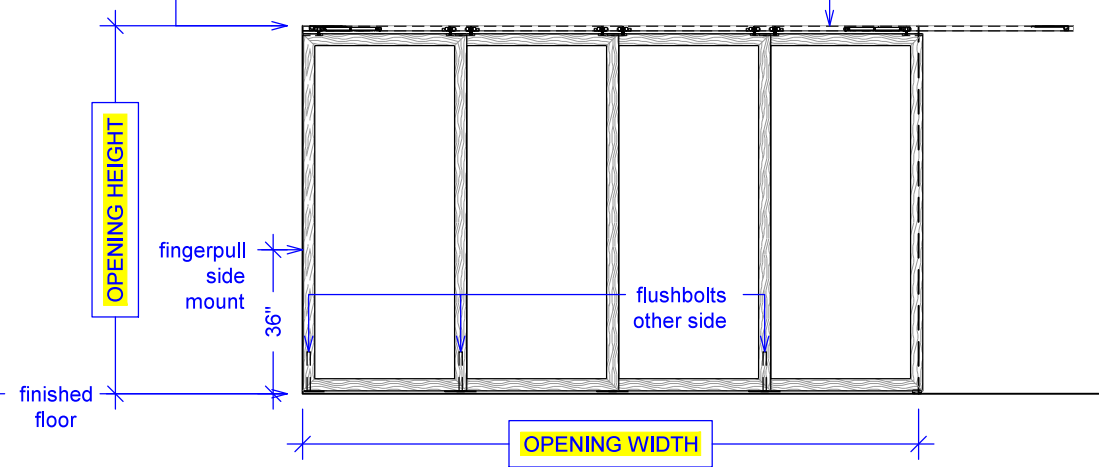


PLAN: open



PLAN: closed

ELEVATION: closed



(SWW4-SC)
SECTION

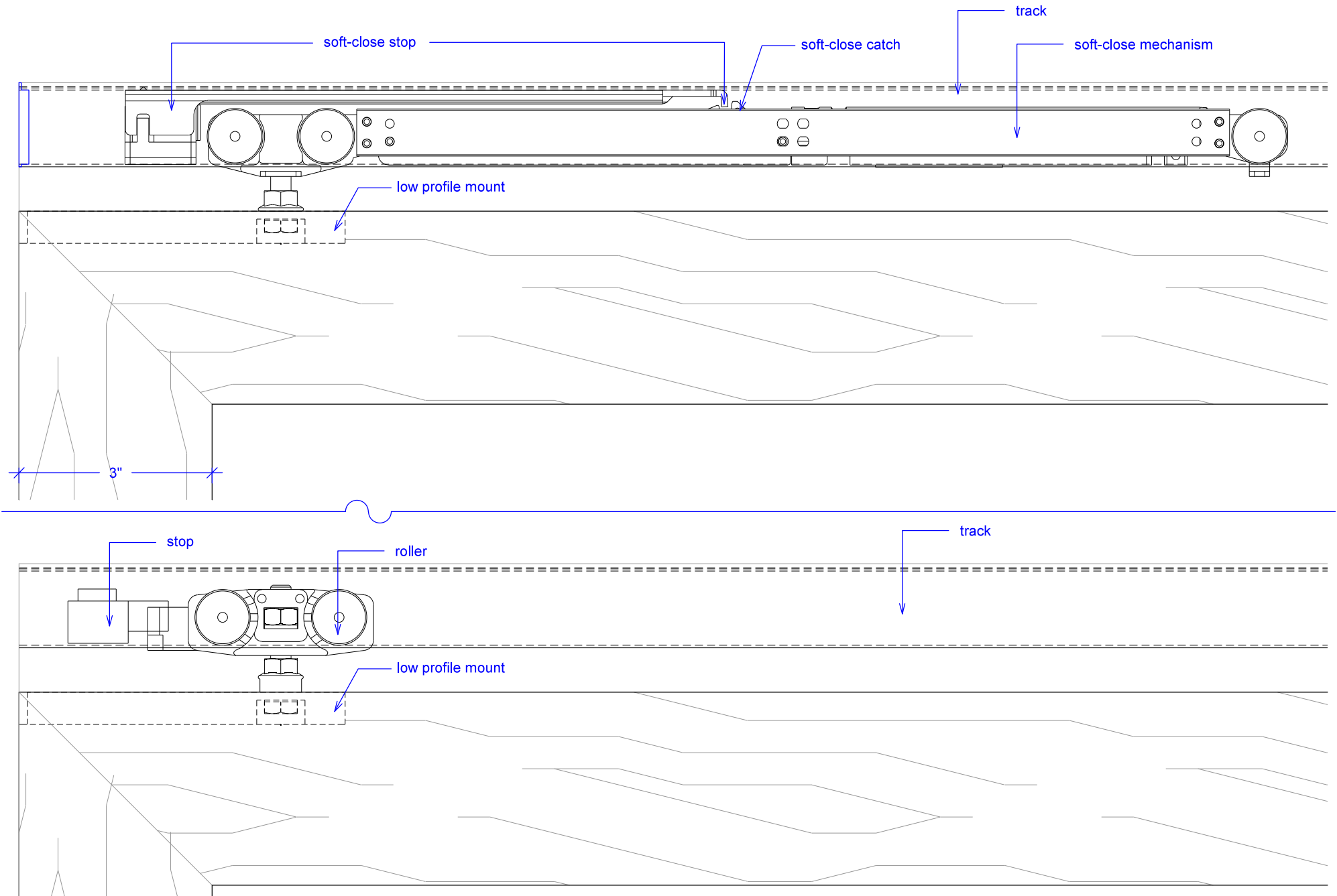


Sliding Wing Wall w/ Soft-Close, 4 Panels

(SWW4-SC)

SOFT-CLOSE HARDWARE

RAYDOOR STANDARD
SYSTEM DRAWINGS
©2020

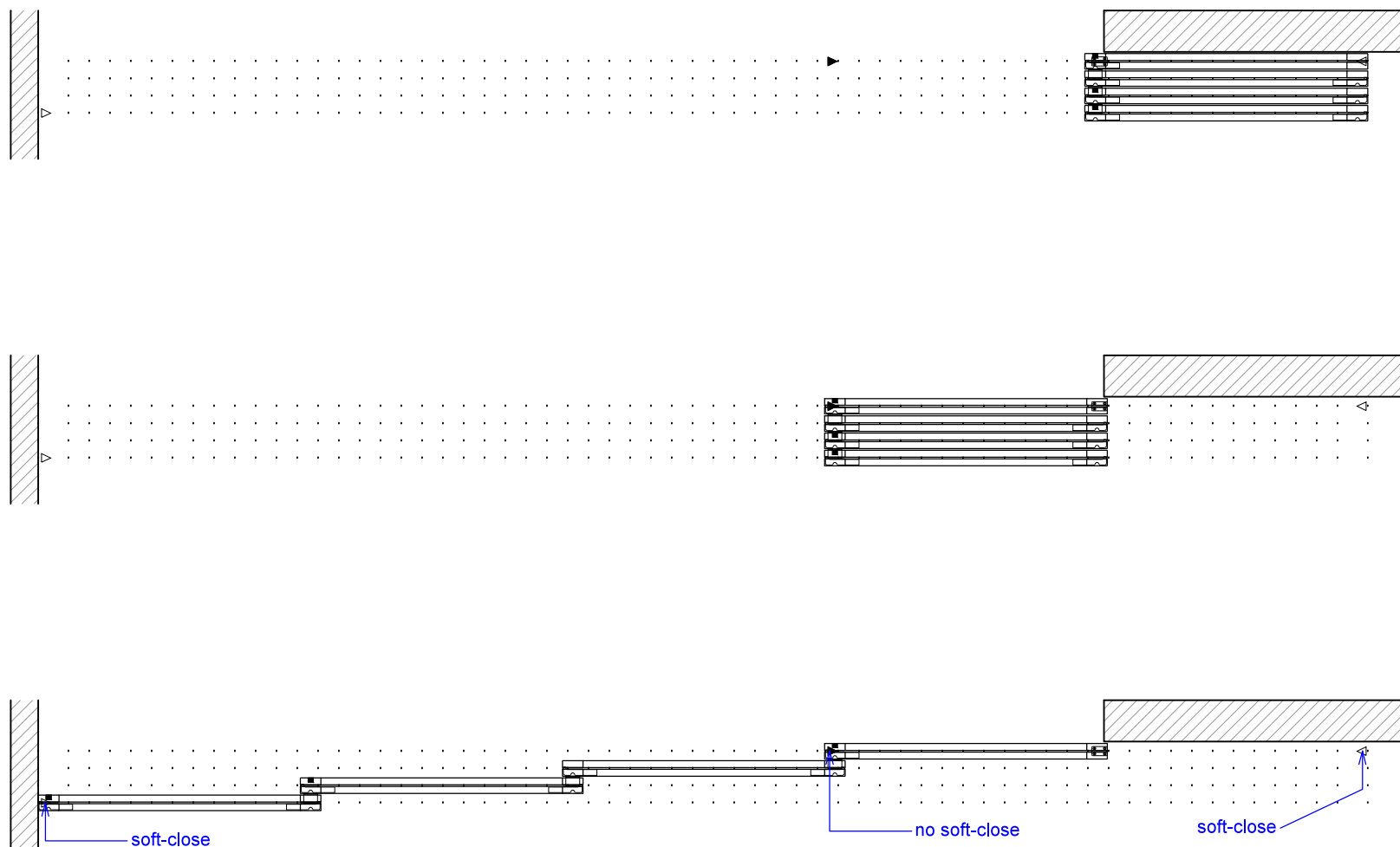


Sliding Wing Wall w/ Soft-Close, 4 Panels

(SWW4-SC)

OPERATION OVERVIEW

RAYDOOR STANDARD
SYSTEM DRAWINGS
©2020



KEY:

▷ stopper / release device

▶ track stop

□ RGS hook

└ RGS stop

■ flushbolt