

Sliding Wing Wall w/ Soft-Close, 4 Panels, Symmetrical

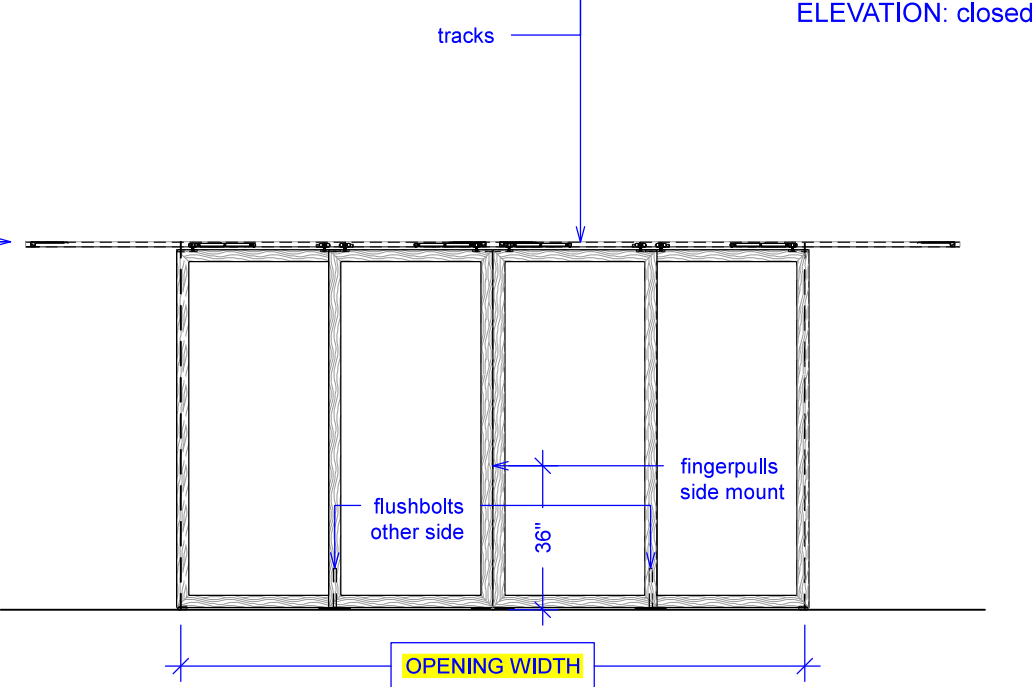
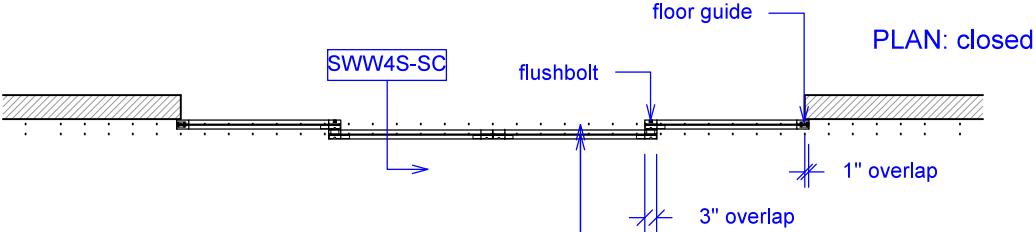
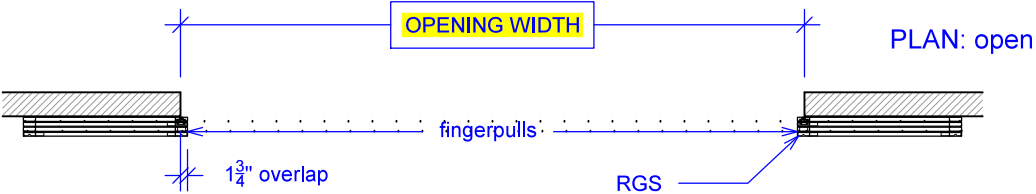
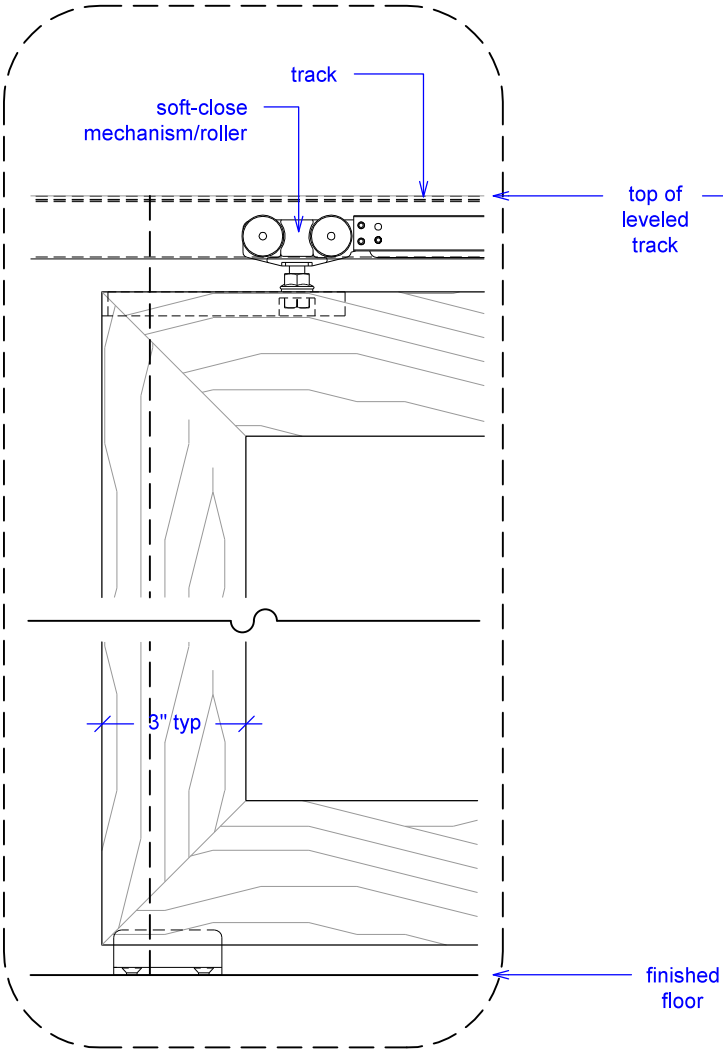
(SWW4S-SC)

ELEVATION

RAYDOOR STANDARD
SYSTEM DRAWINGS
©2020



YOUR OPENING HEIGHT = PANEL + 2⁵/₈"
YOUR OPENING WIDTH = (4 x PANEL) - 8"

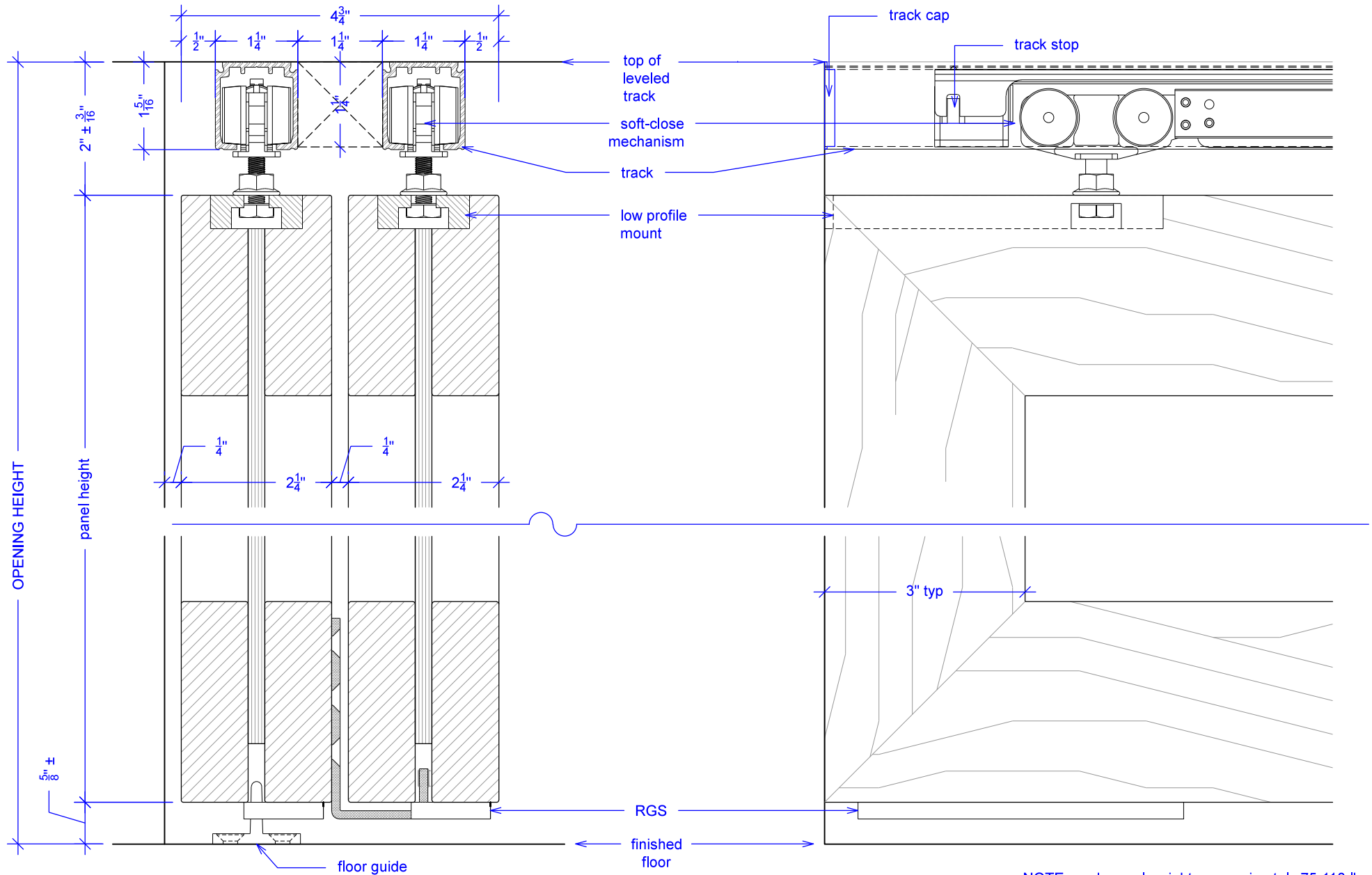
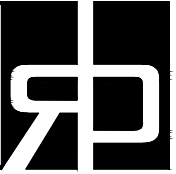


Sliding Wing Wall w/ Soft-Close, 4 Panels, Symmetrical

(SWW4S-SC)

SECTION

RAYDOOR STANDARD
SYSTEM DRAWINGS
©2020



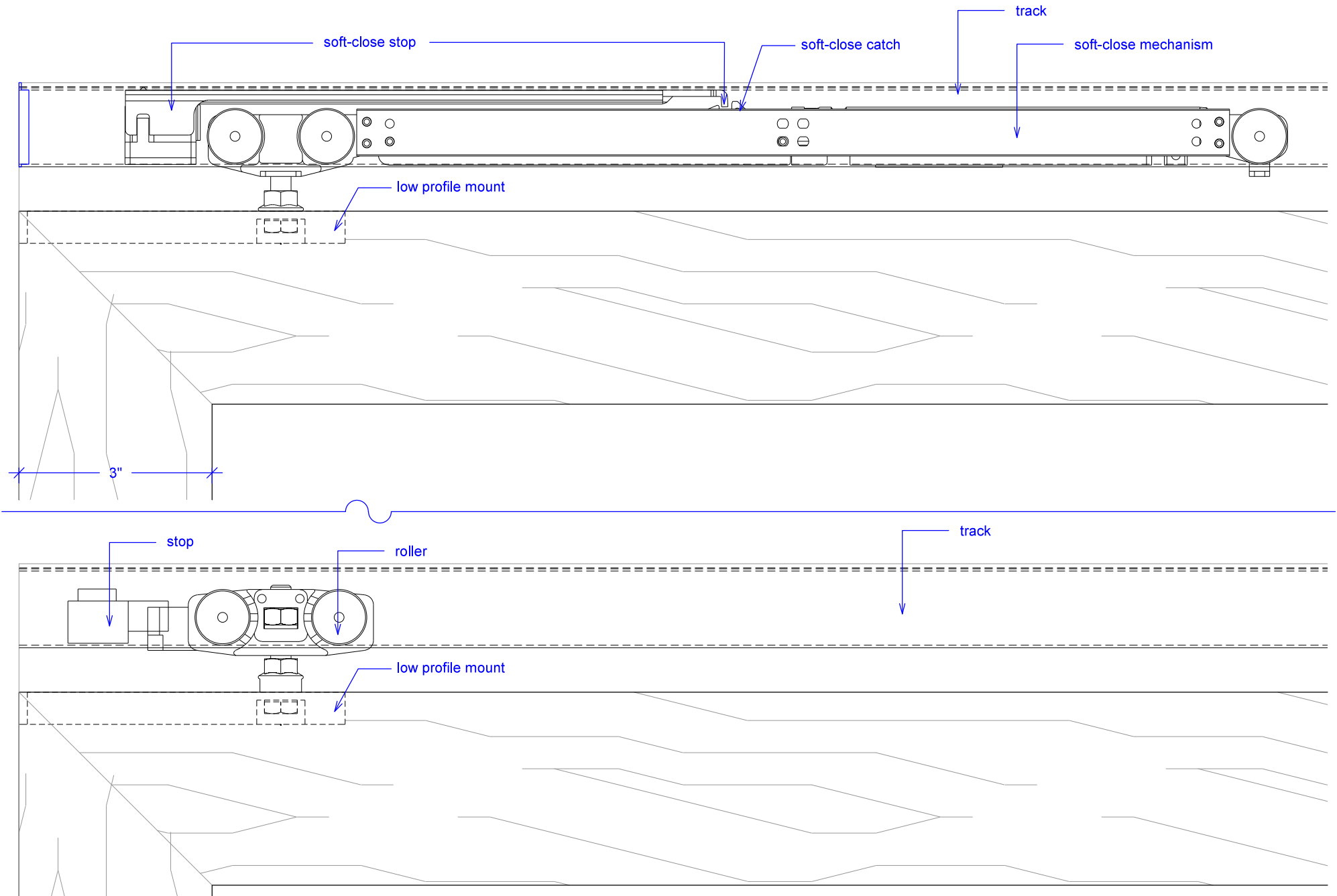
NOTE: each panel weights approximately 75-110 lbs.
Secure tracks accordingly.

Sliding Wing Wall w/ Soft-Close, 4 Panels, Symmetrical

(SWW4S-SC)

SOFT-CLOSE HARDWARE

RAYDOOR STANDARD
SYSTEM DRAWINGS
©2020

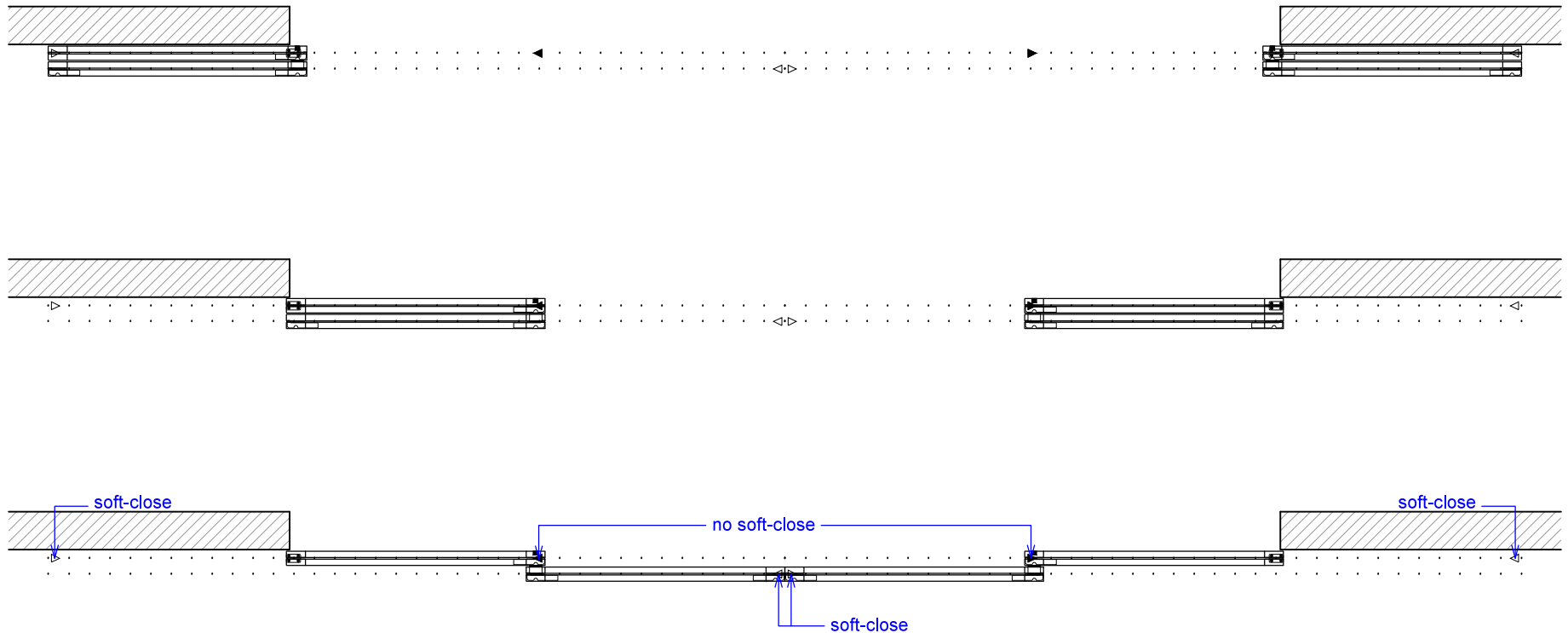


Sliding Wing Wall w/ Soft-Close, 4 Panels, Symmetrical

(SWW4S-SC)

OPERATION OVERVIEW

RAYDOOR STANDARD
SYSTEM DRAWINGS
©2020



KEY:



floor guide



stopper / release
device



track stop



RGS hook



RGS stop



flushbolt