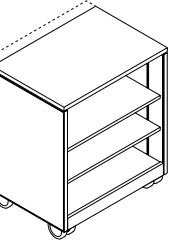
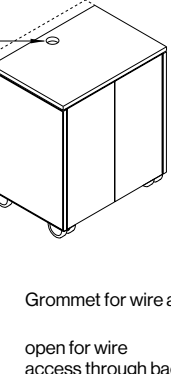
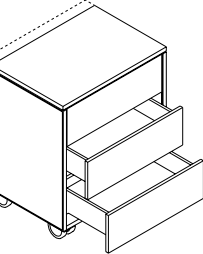


## STANDARD FEATURES

Vox Carts are designed to complement all Vox credenzas and cabinets in The Vox Collection. The sides of the Carts have aluminum trim around the perimeter. Trim is available in five anodized finishes to match all designs in The Vox Collection. Vox Carts are available in standard Nienkämper wood veneers and stains, and are 34 1/4" high. The end elevation matches the doors on 34-1/4" high Vox credenzas, and can be used together to form a continuous storage element. (See page 314)

	Model Number	Cabinet Finish	Top Finish	L" x D" x H"	List Price	Product Description	
<b>OPEN WITH SHELVES</b>							
	23480/2	Wood	Wood	30" 20" 34 1/4"	4,305	<ul style="list-style-type: none"> <li>• 2 adjustable veneered shelves.</li> <li>• Captive shelf storage below (1 shelf).</li> <li>• Fully adjustable shelves in 1" increments.</li> <li>• 4" diameter, non-marking polyurethane tyred casters.</li> <li>• Shelf size: 27 3/4" W x 18" / 21 1/2" D.</li> <li>• Interior Dimensions: 27 3/4" W x 19 1/4" / 22 3/4" D x 27 1/2" H.</li> <li>• Accommodates most document cameras.</li> <li>• Accommodates all electronic projectors.</li> </ul>	
	23480/5	Wood	Laminate	30" 20" 34 1/4"	4,085		
	23481/2	Wood	Wood	30" 23 1/2" 34 1/4"	4,525		
	23481/5	Wood	Laminate	30" 23 1/2" 34 1/4"	4,300		
<b>TWO DOORS WITH SHELVES</b>							
 <p>Grommet for wire access</p> <p>open for wire access through back</p>	<b>23486/2</b>	<b>Wood</b>	<b>Wood</b>	<b>30" 20" 34 1/4"</b>	5,395	<ul style="list-style-type: none"> <li>• 2 adjustable veneered shelves.</li> <li>• Captive shelf storage below (1 shelf).</li> <li>• Fully adjustable shelves in 1" increments.</li> <li>• 4" diameter, non marking polyurethane tyred casters.</li> <li>• 2 doors with positive locking touch latches.</li> <li>• 2 5/8" diameter aluminum grommet centered towards back of top.</li> <li>• Rebated shelves for wire passage.</li> <li>• 2" wire access slot at bottom back edge.</li> <li>• Shelf size: 27 3/4" W x 17" / 20 1/2" D.</li> <li>• Interior Dimensions: 27 3/4" W x 18 1/4" / 21 3/4" D x 27 1/2" H.</li> <li>• Accommodates most document cameras.</li> <li>• Accommodates all electronic projectors.</li> </ul> <p><b>Optional:</b></p> <ul style="list-style-type: none"> <li>• Single lock on upper left corner of right door, locks both doors.</li> <li>• Addition of lock requires a pull, see standard pulls in our Credenza price lists.</li> </ul>	
	<b>23486/5</b>	<b>Wood</b>	<b>Laminate</b>	<b>30" 20" 34 1/4"</b>	5,120		
	Cabinet with lock						
	23487/2	Wood	Wood	30" 20" 34 1/4"	5,560		
	23487/5	Wood	Laminate	30" 20" 34 1/4"	5,275		
	<b>23482/2</b>	<b>Wood</b>	<b>Wood</b>	<b>30" 23 1/2" 34 1/4"</b>	5,680		
	<b>23482/5</b>	<b>Wood</b>	<b>Laminate</b>	<b>30" 23 1/2" 34 1/4"</b>	5,385		
	Cabinet with lock						
	23484/2	Wood	Wood	30" 23 1/2" 34 1/4"	5,855		
	23484/5	Wood	Laminate	30" 23 1/2" 34 1/4"	5,550		
<b>THREE DRAWERS</b>							
	<b>23488/2</b>	<b>Wood</b>	<b>Wood</b>	<b>30" 20" 34 1/4"</b>	5,150	<ul style="list-style-type: none"> <li>• 3-drawers, bottom of interiors lined with fabric.</li> <li>• Interior dimensions: 4" H x 16 5/16" D x 26 5/8" L.</li> <li>• 4" diameter non-marking polyurethane-tyred casters.</li> <li>• Positive spring return drawer slides prevent accidental opening during use.</li> <li>• Anti-tilt mechanism for drawers.</li> <li>• Does not accommodate all document cameras.</li> </ul> <p><b>Optional:</b></p> <ul style="list-style-type: none"> <li>• Single lock, mounted on right side, locks all three drawers.</li> </ul>	
	<b>23488/5</b>	<b>Wood</b>	<b>Laminate</b>	<b>30" 20" 34 1/4"</b>	4,890		
	Cabinet with lock						
	23489/2	Wood	Wood	30" 20" 34 1/4"	5,305		
	23489/5	Wood	Laminate	30" 20" 34 1/4"	5,040		
	<b>23483/2</b>	<b>Wood</b>	<b>Wood</b>	<b>30" 23 1/2" 34 1/4"</b>	5,410		
	<b>23483/5</b>	<b>Wood</b>	<b>Laminate</b>	<b>30" 23 1/2" 34 1/4"</b>	5,140		
	Cabinet with lock						
	23485/2	Wood	Wood	30" 23 1/2" 34 1/4"	5,580		
	23485/5	Wood	Laminate	30" 23 1/2" 34 1/4"	5,305		



**Three Drawers - Model #23483**

Positive spring return drawer slides prevent accidental opening during use. Bottom interiors of drawers are fabric-lined.



**Open with Shelves - Model #23481**

Shelves are fully adjustable in 1" increments. Two adjustable veneered shelves are included.



**Two Doors with Shelves - Model #23482**

Doors have positive locking touch latches. Shelves are fully adjustable in 1" increments. Two adjustable veneered shelves are included.

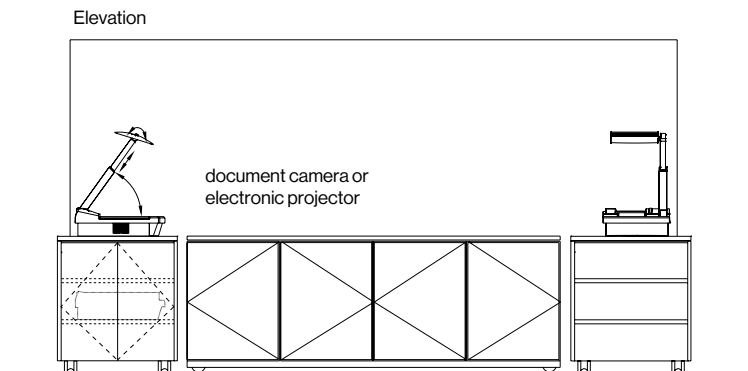
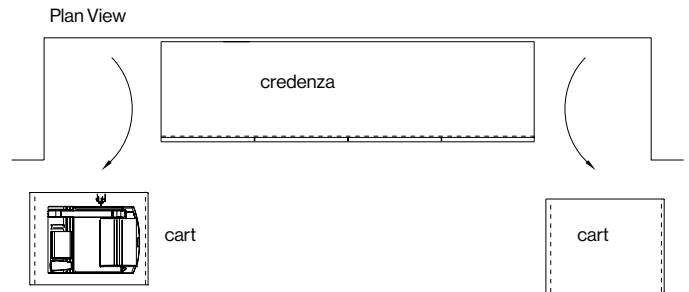
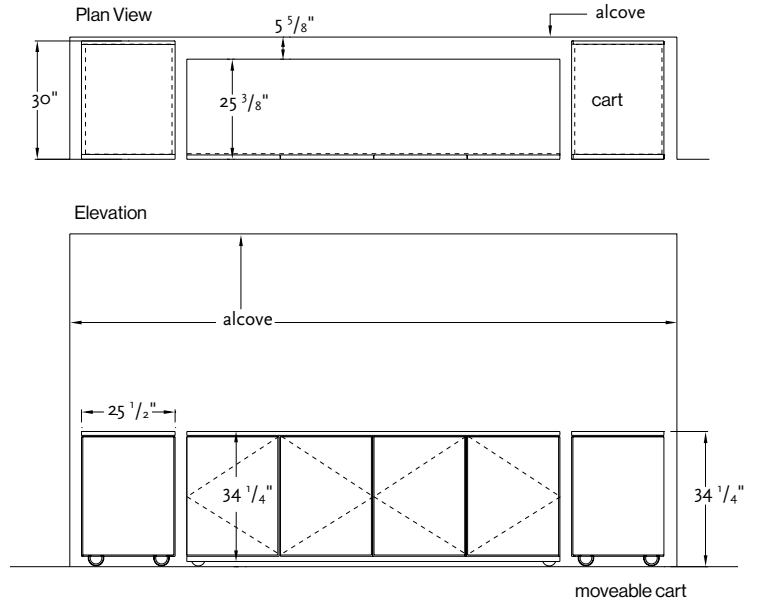


**Vox® Carts**

Vox Carts offer flexibility and mobility in the boardroom and corporate office environment. Designed to house all multimedia equipment and hospitality services, the Vox Cart accommodates any business event from high-tech presentations to a simple lunch or coffee service.

# VOX® CREDENZAS & CARTS IN STORAGE POSITION

## CARTS STORED IN A BOARDROOM ALCOVE



Vox Carts are mobile and can be used for hospitality service or housing A/V equipment and can easily be taken to various meeting spaces.