

Cern Table

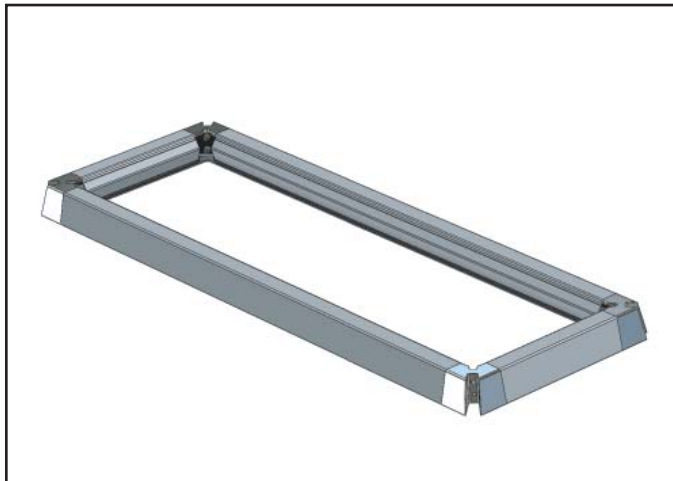
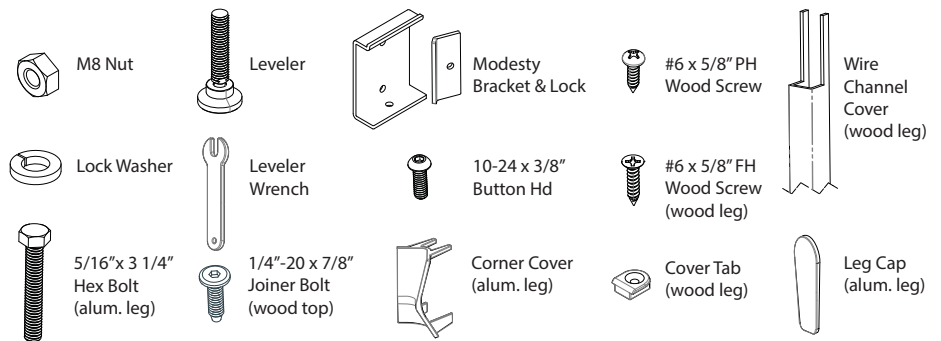
INSTALLATION GUIDE

SUGGESTED MINIMUM CREW: 2
APPROXIMATE INSTALL TIME: 1.5Hr

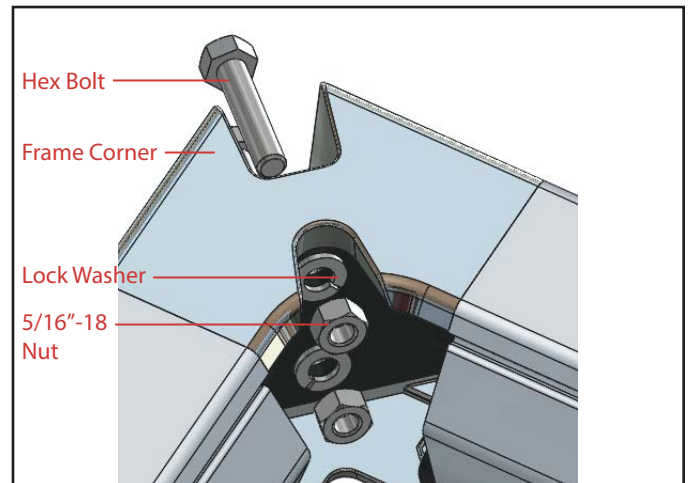
TOOLS REQUIRED:

#4 Hex Key
 Philips Driver /Bit
 1/2" Wrench
 13mm Wrench
 Drill

HARDWARE:

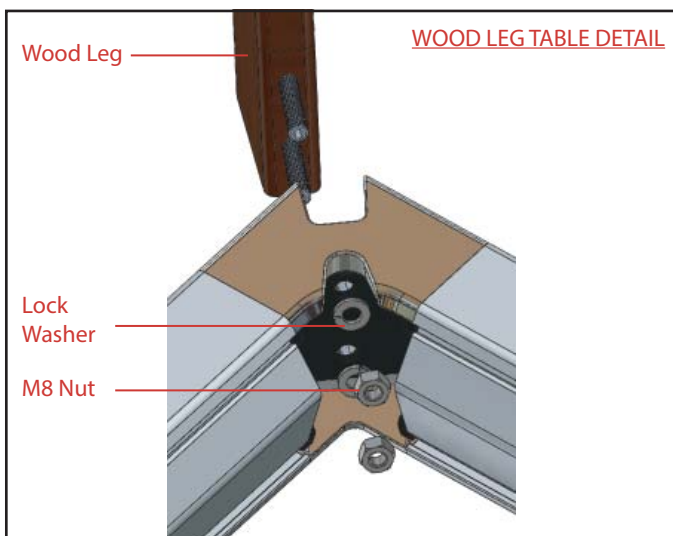


The frame ships with temporary hex bolts, lock washers and nuts holding the corners together.

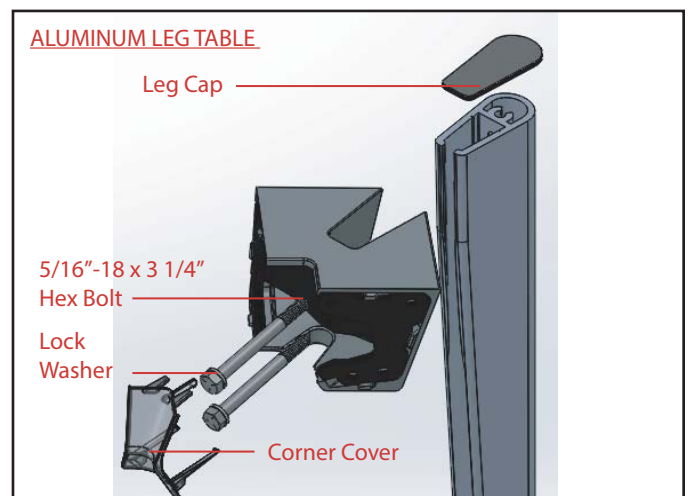


Loosen the hex bolts with a wrench and set lock washers aside... they will be required in next step.
 Discard nuts & bolts- they will be replaced with metric nuts in hardware pack.

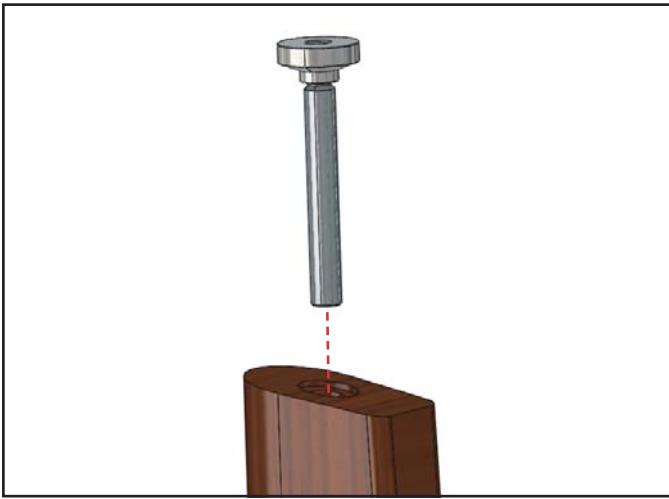
!WARNING- THE CORNERS WILL BE UNSECURED ONCE BOLTS ARE REMOVED BE CAREFUL NOT TO DROP OR DAMAGE!



To install wood legs, align hanger bolts with through holes in corner and corner bracket. Secure in place with lock washers from step 1 and M8 nuts from hardware pack. Repeat for all legs.



To install aluminum legs, align through holes in bracket and cast corner with tapped holes in leg. Secure with hex bolts and lock washers. Repeat for all legs. Squeeze corner cover in place. Peel double sided tape from underside of leg cap and press into place.



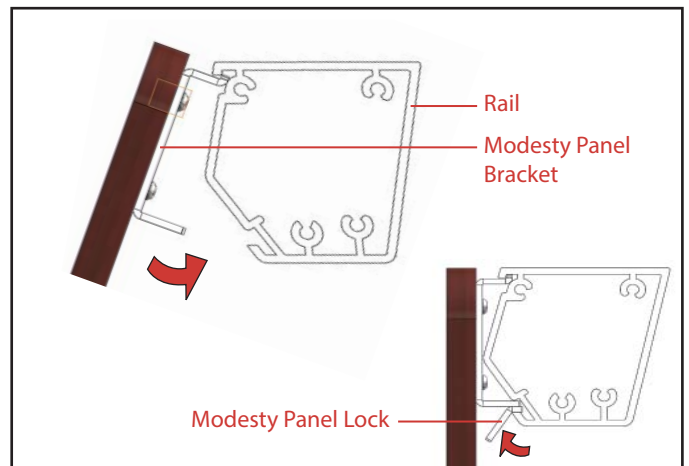
Screw the leveller foot into the threaded insert in bottom of leg and tighten with small wrench supplied. Repeat for all legs.



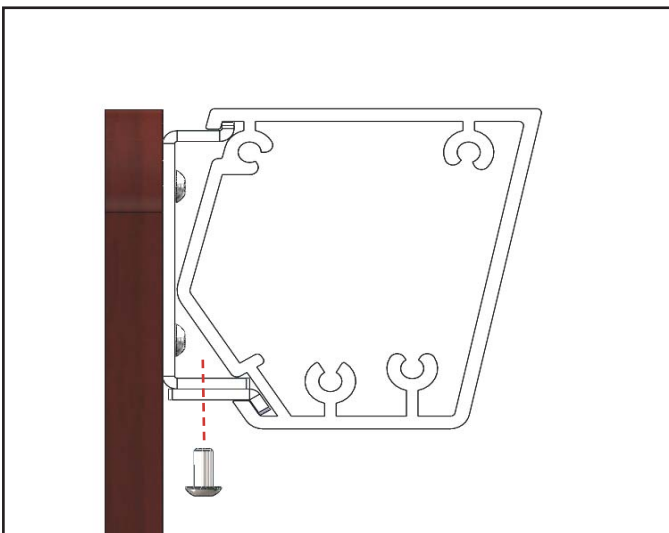
Carefully rotate table structure into the upright position.



Attach modesty panel brackets to modesty panel with #6 x 3/8" pan head screws provided.



To install modesty panel, carefully, align top bend of modesty bracket with groove in extrusion. Tilt into place. Position the modesty panel within frame and tilt modesty panel lock into the lower groove of the rail extrusion. This will act as a wedge between the bracket and locking tab.

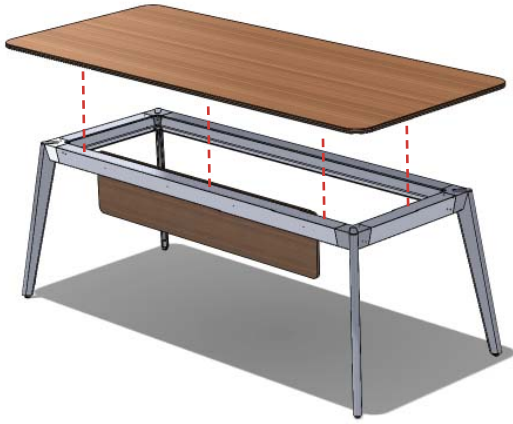


Secure the bracket and lock with 10-24 x 3/8" button head machine screw. Repeat for all brackets.



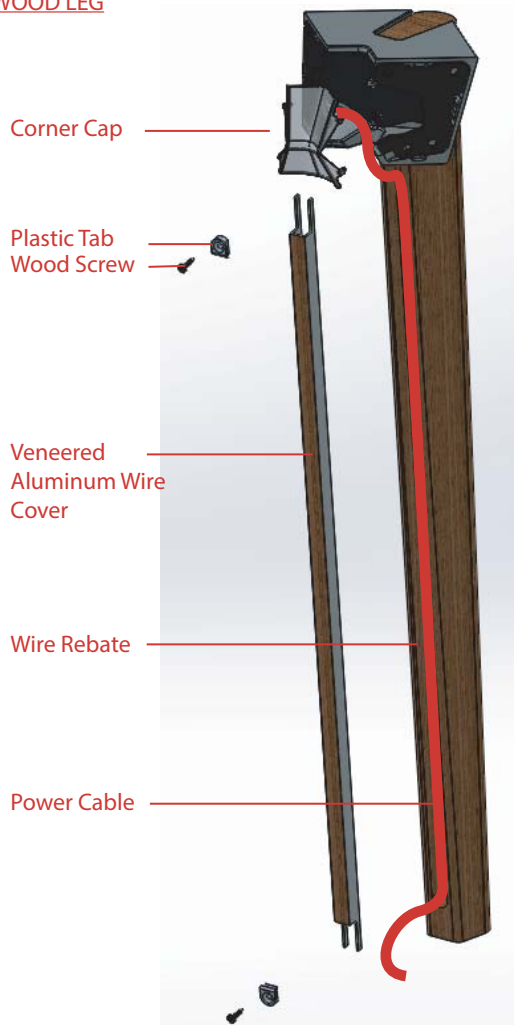
Peel the adhesive back from the grip tape and stick it down to tops of legs, trimming if required. The top can now be placed on top of the completed assembly.

WOOD TOP TABLE



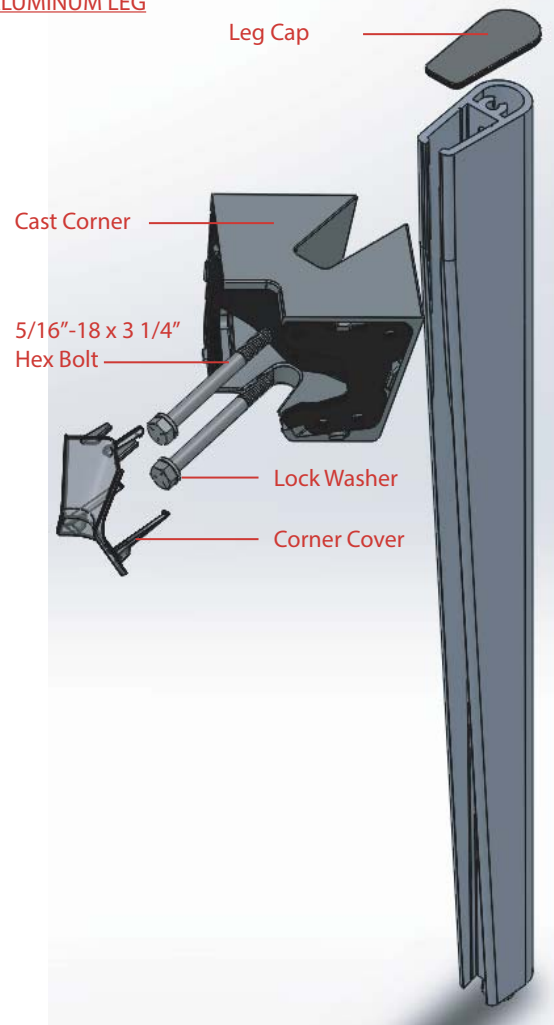
For Tables with wood tops, align through holes in top of rail with threaded inserts located in top. Secure with 1/4"-20 x 7/8" Joiner Bolts.

WOOD LEG



For tables that feature wires managed down the wood leg, you will need to route cable down rebate in leg. Press cover in place over the cable and secure with plastic tabs and #6 x 5/8" flat head wood screws. Carefully compress the corner cap in to place within the corner casting.

ALUMINUM LEG



For tables that feature wires managed down the aluminum leg, you will need to route cable down groove in leg extrusion. Carefully compress the corner cap in to place within the corner casting.