

VOX FOLDING CONFERENCE TABLE

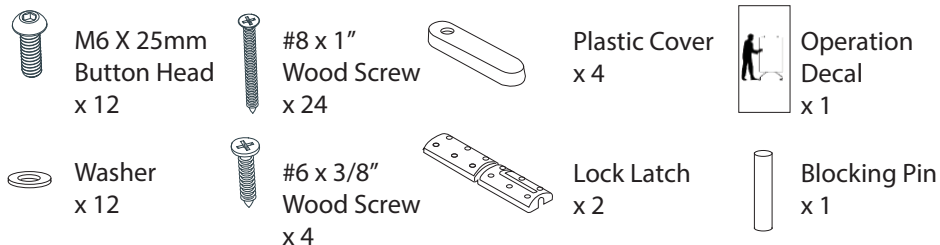
INSTALLATION GUIDE

SUGGESTED MINIMUM CREW: 2
APPROXIMATE INSTALL TIME: 30 min.

TOOLS REQUIRED:

#4 Hex Key
Phillips Screwdriver

HARDWARE:

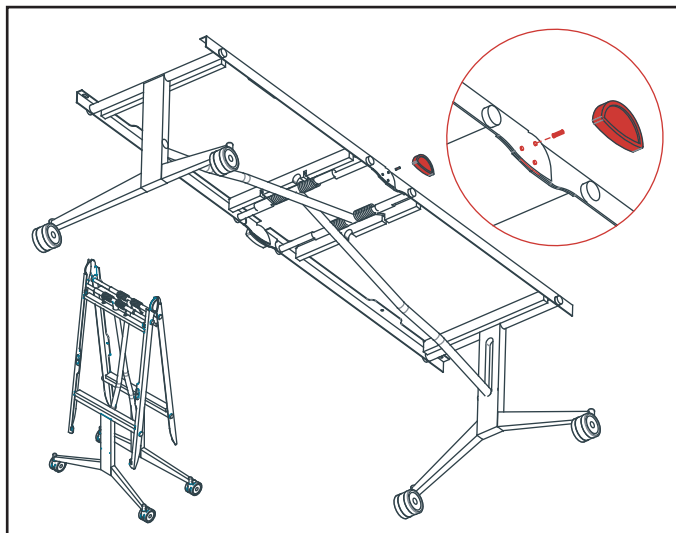


Warning:

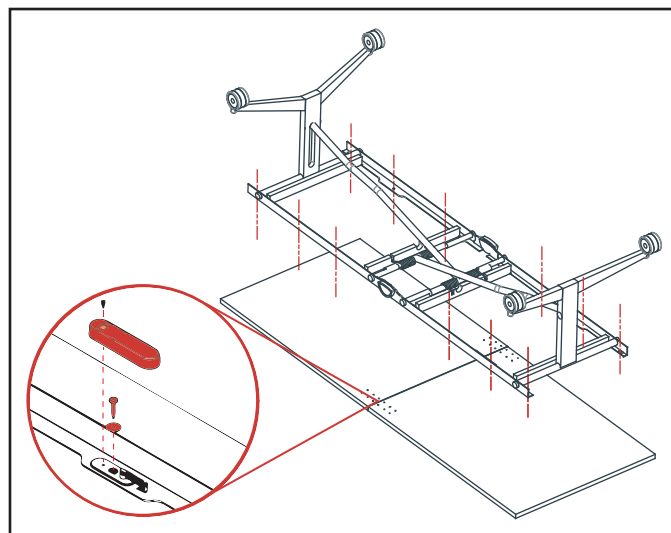
Components are sprung and under considerable tension.

To avoid potential injury, always pay close attention during use and installation to the presence of all moving parts.

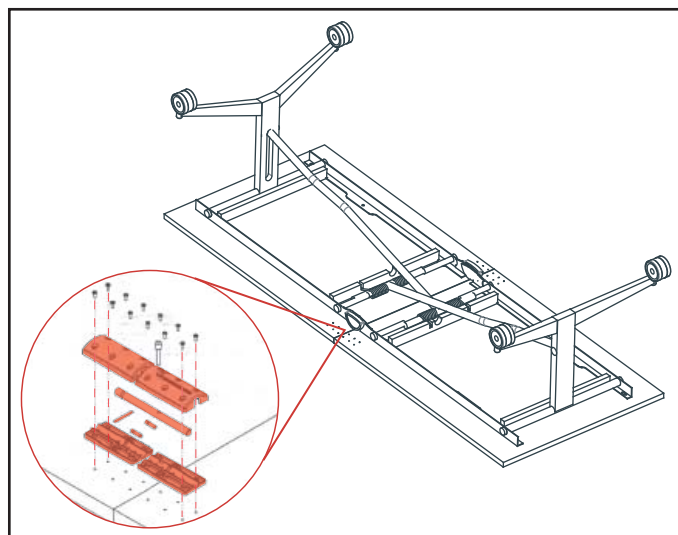
Nienkamper is not responsible for any damages to property or personal injury due to improper use and or installation.



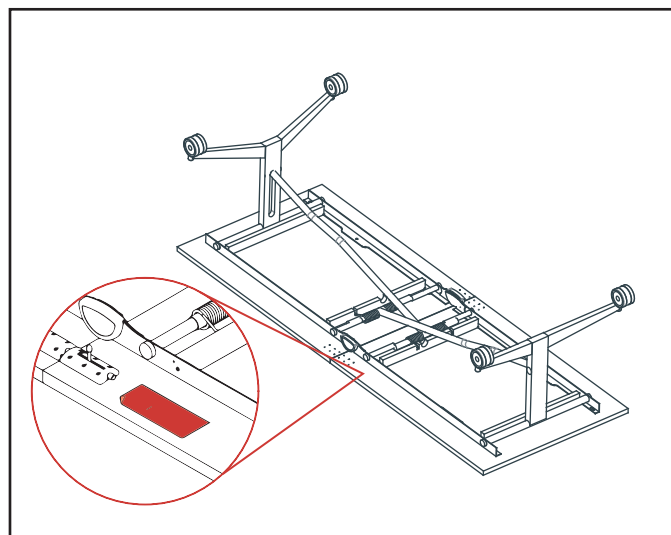
With the help of another person, carefully open the frame and insert blocking pin. This locks the frame into an open position and is critical to safe assembly.



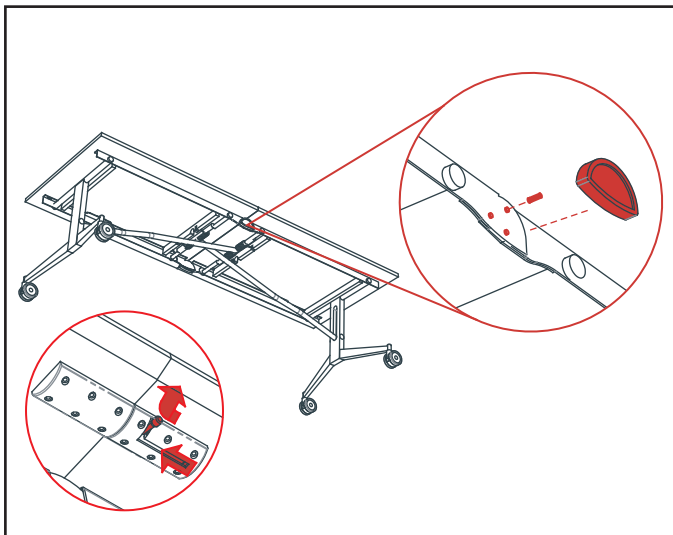
Place top sections face down on a protective surface, align through holes in frame with threaded inserts in top. Secure with M6 button head screws and washers. Note, slight movement of top and frame is required for anti-pinch feature. Install plastic cover & fix with #6 x 3/8" wood screw.



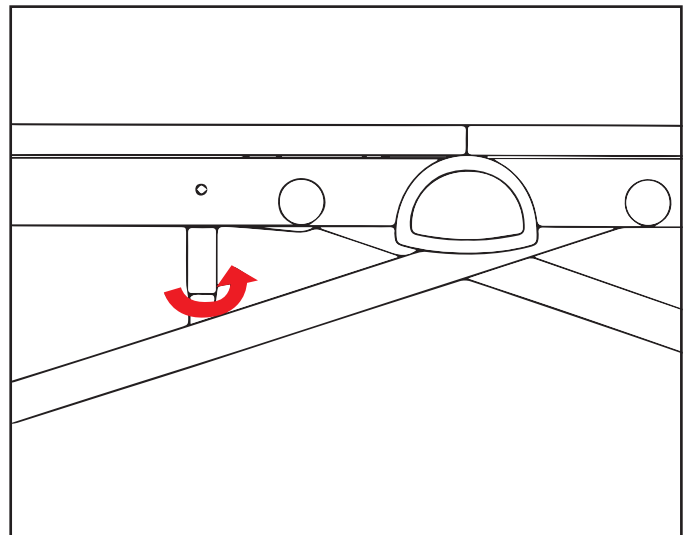
Assemble lock latch by aligning bottom housings, center pin, locking pin, lock throw, latch and top housing as shown. Fix housings to top with #8 x 1" wood screws. Repeat both sides.



Apply the instruction / operation decal.



Ensure both lock latches are in the locked position and with the help of another person, rotate table onto casters. Remove blocking pin and replace cover cap.



Tuning the flatness of the top can be done by rotating the screw as shown.

OPERATION

OPENING THE TABLE:

Check there are no obstacles around the table and enough space to open it.

The user must stand next to the closed table, facing the tops in symmetrical position.

The user must carefully hold the table tops and slowly distance them, helping the table to open.

While the table opens, the user must guide and hold the table tops with their hands.

When the table is completely opened, the user must lock the latches placed under the table tops.

When the table is in the operative position, the user must lock the casters.



FOLDING THE TABLE:

Check there are no obstacles below the table.

The user must unlock the 4 casters.

The user must unlock the locking latches placed under the table tops.

The user must stand next to the table, facing the point where the tops meet.

The user must spread top section slightly and lift in center, guiding top to vertical position.

The pre-charged spring helps the user in this movement and automatically stops the table at the end of the movement in the closed position.

The product is not suitable for outdoor use.