

# Gateway™ Plus

Tel 800 668 9318  
Tel 416 298 5700  
Fax 416 298 9535  
mail@nienkamper.com  
www.nienkamper.com



## CONFERENCE TABLE & POWER UNIT INSTALLATION GUIDE

THIS IS A GENERAL ASSEMBLY GUIDE, NOT ALL CONDITION MAY APPLY TO YOUR PARTICULAR INSTALLATION

### HARDWARE PARTS LIST



#### ALLAN KEYS

Small 4 mm  
For hex socket assembly, to join rails together.  
For installing bases to rails.  
For installing mounting plate to top.  
Large 5 mm  
For hex socket assembly, to join rail together.



#### FLAT HEAD HEX SOCKET ASSEMBLY

4 mm and 5 mm - 2" x 1/4" - 20 and threaded collar.  
Joins rails together.



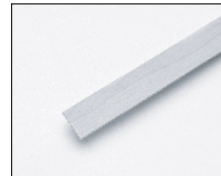
#### FLAT HEAD HEX SOCKET BOLT

4 mm - 1" x 1/4" - 20.  
Joins mounting plate to top.  
Joins bases to top for tables up to 108".



#### TIGHT JOINT FASTENERS

3 piece assembly  
plus 1 tightening rod.



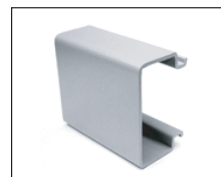
#### WOODEN SPLINE

1/8" x 7/8" x (24" - varies).  
Inserts into the edge of  
multiple segment tops.



#### MOUNTING PLATE

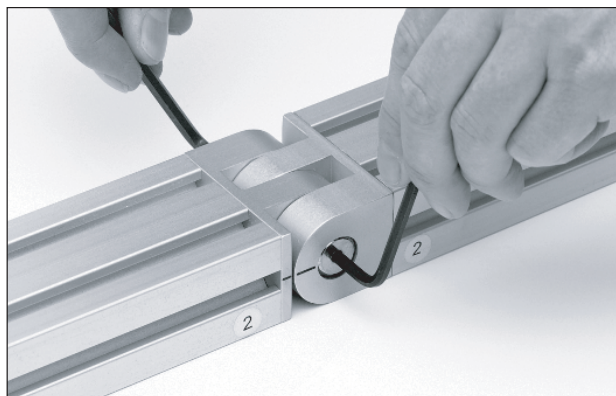
1/4" x 3" x 4".  
Fixes rail to top.



#### WIRE MANAGEMENT "U" CLIPS

Grey ABS plastic.  
Used to secure wires to  
support rail.

## ASSEMBLING SUPPORT RAILS

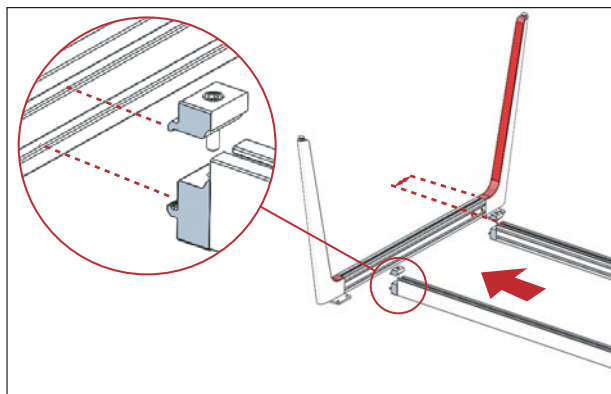


1

- Large conference tables incorporate support rails in multiple segments.
- Position and assemble connecting joints as shown.
- Matching joints are number coded (circular labels).
- Required hardware: 2" x 1/4" - 20 flat head hex socket assembly.
- Tighten joint, aligning marks as shown.
- Certain table shapes require rails to be assembled at different angles (as marked).

## ATTACHING BASE TO RAILS

2



- Measure from end of base rail 6 1/2" and mark. This will locate center positions of gripper rails.
- Loosen gripper fitting socket head cap screw and push fitting and rail into position, tighten with 1/4" allen key to secure.
- If your table has mid legs, measure and mark center location according to your specific table. Align center of mid base assembly with mark and secure with gripper fitting.

## FINISHED BASE ASSEMBLY



3

- Flip assembly over to apply top.

## JOINING MULTIPLE PIECE TOPS

4



- Position multiple section tops with matching identification numbers onto rails.
- Insert wooden spline into the groove at the seam.
- Insert ball fitting, align with tight joint bolt.
- Start the thread.
- Slide tops together, align the top.
- Insert tight joint collar.
- Tighten ball fitting, hand tight.

## ATTACHING RAIL TO TOP

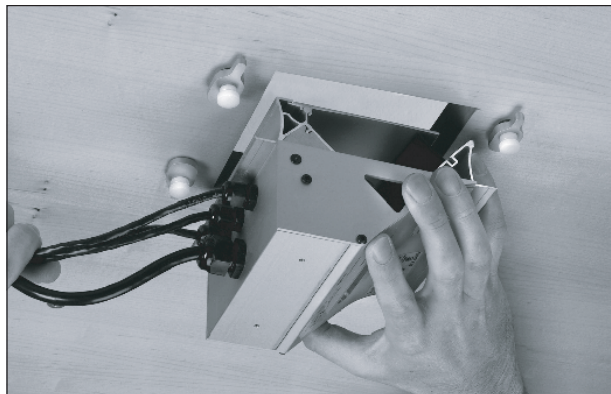


5

- Insert the mounting plate into the top groove of the rail.
- Slide the plate to align threaded inserts of top with holes in mounting plate.
- Required hardware: 1" x 1/4" - 20 flat head hex bolt.

## INSTALLING VOX FORUMS™

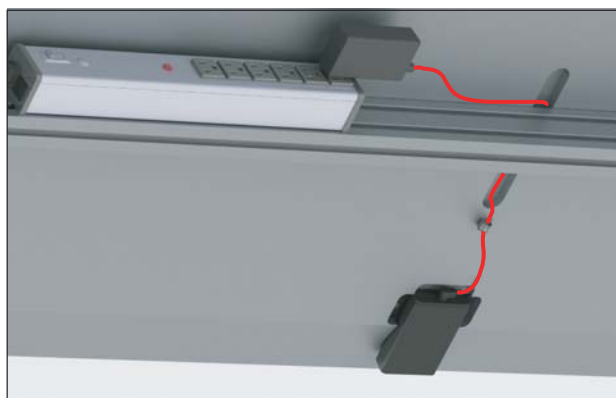
6



- Unpack the Forum box and retrieve the swivel latches.
- Carefully thread plastic thumbscrews into inserts around the square hole in the top.
- Position Forum in opening and carefully ease up into the square hole.
- Rotate the swivel catches and tighten the thumb screw fasteners.

Note: detailed installation instructions are included with all Vox Forums.

## INSTALLING EDGE POWER UNIT



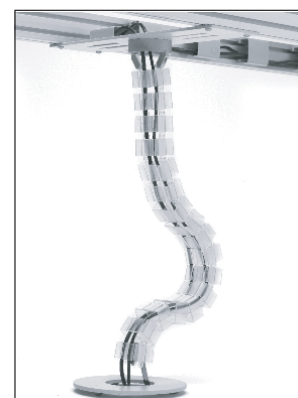
- Unpack power unit and install in rebates machined under top using wood screws provided with unit.
- Feed power cable under rail via wire rebate and plug into surge protector or route to building power according to your specific table.
- Screw "d" ring cable manager into place in front of cable rebate.

## "U" CLIPS



- Using wire management "U" clips, along the rail, store and route cables to cable manager.

## WIRE MANAGEMENT



- To bring cabling from the under side of the top to the floor, wire management accessories can be used.
- A variety of models are available.
- Instructions for installing wire management accessories are packaged with each accessory.